



**Media specialist/The Ichabod editor**  
Ernie W. Webb III, ba '98 • [ernie.webb@washburn.edu](mailto:ernie.webb@washburn.edu)

**Alumni Association director**  
Susie Hoffmann, bba '87 • [susie@washburn.edu](mailto:susie@washburn.edu)

**Contributors**  
Dena Anson, ba '01  
director, university relations

Katy Browne, aa '07  
administrative specialist, Alumni Association

Kathy Busch  
director, communications  
Washburn University Foundation

Gene Cassell  
director, sports information

Peggy Clark  
photographer, university relations

Lauren Cunningham  
communications specialist  
Washburn University Foundation

Kim Gronniger  
senior director of outreach, donor relations and communications  
Washburn University Foundation

Cynthia Hornberger, bsn '78  
special assistant to the president

Amanda Hughes, ba '00  
assistant director, university relations

Julie Olson, aa '94  
director, donor relations  
Washburn University Foundation

Michaela Saunders  
web editor, university relations

Sarah Towle, ba '07  
communications strategist  
Washburn University Foundation

The ICHABOD alumni magazine is published three times a year by the Washburn Alumni Association for alumni, faculty, staff and friends of the University. Third-class postage paid at Topeka.

Address: 1700 SW College Ave., Topeka, KS 66621  
Telephone: 785.670.2303  
Email: [ernie.webb@washburn.edu](mailto:ernie.webb@washburn.edu) • Website: [washburn.edu/alumni](http://washburn.edu/alumni)



## FEATURES

**5**  
Journey to Justice: Alumna Moritz second from Washburn to serve in federal court

**12**  
Down the Stretch: Sesquicentennial upon Washburn as new year arrives

**15**  
Serving Washburn: Student Service Center settling in on campus

**22**  
Alumni Fellows: University honors eight distinguished alumni

**31**  
Nifty 90: Mulvane Art Museum celebrates anniversary

**36**  
Boon for Athletics: Reichart estate endows \$1.4 million for scholarships

**39**  
Webb column: Washburn experience has lasting impact on football stars

## DEPARTMENTS

- 3 From the President
- 21 Alumni News
- 27 Campus News
- 36 Sports
- 42 Class Notes
- 46 In Memory
- 51 Calendar of Events



## CONTACT US

Your news, thoughts and questions are important to us. Please write, telephone or send us an email. Letters to the editor and news of jobs, honors, weddings, anniversaries and births are always welcome. Please include your name, class year, address and daytime phone number. Letters to the editor may be edited for length and clarity.



# FROM THE PRESIDENT

The year 2015 will be an exciting one for us! On Feb. 6, we will celebrate the 150th anniversary of the signing of the Articles of Association that began Washburn University. Nine trustees had the courage to begin the college on the plains with the vision “to afford to all classes, without distinction of color, the advantages of a liberal education.”

We celebrate Washburn’s history, recognizing not many organizations last 150 years. This organization survived early years of financial hardship, world wars, a Great Depression, a tornado and changing societal support for post-secondary education. What kept the college and then university together was a shared vision. This vision, “Not for Ourselves Alone,” created a mutual bond between the University and the communities it served.

In times of hardship, the community stepped forward to provide needed support. Ichabod Washburn recognized the value of this vision with his generous gift of \$25,000 in 1868 to save Lincoln College. In 1941, Washburn’s fiscal woes were alleviated with city property tax support. In 1966, the community rallied to help Washburn rebuild after the historic tornado destroyed much of the original campus. State support provided yet another source of funding to build quality educational programs.

Washburn’s mission to provide “teaching-centered, student-focused” education will continue with the talented commitment of outstanding students, faculty, staff, community and grateful alumni.

Our resilience is our guidepost to the future. We embrace the changes required to be successful for another 150 years. We are poised to develop new hallmark programs and innovative educational pathways to continue to provide “an educated citizenry.”

These programs will be tailored to assist students in completing the educational credential they need at the moment; recognizing that learning is a lifelong goal.

I hope you will join us this year as we celebrate our sesquicentennial. Please attend one or more of our special events described in this issue. It is a great time to be an Ichabod!





# JOURNEY TO JUSTICE

Washburn experience helps Moritz on her path to federal court

By Kim Gronniger

Justice Nancy Moritz, bba '82, jd '85, is a collector not of first editions or figurines, but of people – the Sacred Heart High School AP English classmate who sent her the Scrabble game now displayed on a conference table, the debate coach who introduced her to analysis and argument and the Salina Holiday Inn manager who employed her 30 hours each week to cover her high school tuition and contribute to her family's income.

People representing various periods of her life, from childhood friends and Carruth Hall suitemates to professors and colleagues, have attended her swearing-in ceremonies for the Court of Appeals, the Kansas Supreme Court and now her investiture Oct. 17 to the 10th Circuit Court of

Appeals in White Concert Hall.

Admirers of her warmth, wit and work ethic have witnessed all of the oaths she's taken with her hand placed on a hefty family Bible. Her cash-strapped parents purchased the Bible in the 1950s from a traveling salesman at her

father's prophetic insistence.

"My mom thought she was done toting this heavy Bible around the last time I got sworn in, but it means a lot to me to have my late dad present at least in spirit through this symbolic gesture," Moritz said.

When the Tipton native was a

Left: Nancy Moritz, who received a bachelor of business administration degree and a law degree from Washburn, is a judge on the 10th Circuit Court of Appeals. Moritz's investiture was held on Oct. 17 at White Concert Hall.

*Photos by Earl Richardson*

Below: Daughters Kathleen Landis and Sarah (Landis) Roe and mother Carol Moritz were among the family members who attended Nancy Moritz's investiture at Washburn. Nancy Moritz has taken each of her oaths with her hand placed on a family Bible that her parents purchased in the 1950s.



sophomore, the family moved to Salina so her mother could find work and be closer to Moritz's father, who had Huntington's disease and received care at the Veterans Administration hospital.

Moritz and her siblings worked through high school to assist her mother in replacing her father's former postmaster salary. Her first day at Sacred Heart, Moritz met the debate coach, who was creating a new program.

"I discovered I enjoyed the analytical process and developing evidence to support a position," she said. "And I loved presenting an argument to a judge and dissecting the other team's arguments. Although I'd never met a lawyer, this is when I

decided to become a lawyer."

The discovery led her to Washburn University, specifically because of the law school. Though the high school valedictorian's future career was clear, her major was murky. She took English and communications courses that came easily to her before switching to an accounting major she describes as "very challenging."

"My favorite professor, Dr. Meredith Moore, twice tried to talk me out of majoring in accounting," said Moritz, laughing. "I had great business professors, though, like Dr. Richard Moellenberndt and Dr. Walt James. I had excellent professors throughout my time at Washburn. They all strengthened my analytical

and writing skills, whether I was studying history or economics."

One of six kids and the first in her family to obtain a degree, Moritz was a Garvey Scholar, a Nonoso member, Student Senate finance director, reporter for the Washburn Review and a Homecoming candidate. As an undergraduate, she also worked as a clerk at Mabee Library and the law library, as well as a resident assistant at Carruth Hall.

"I liked being part of a close-knit, on-campus community at Washburn; it was so easy to get involved and make friends," she said. "By design, I didn't know a soul when I came. I loved my classes and enjoyed learning from nontraditional students who had life experiences and perspectives that I didn't."

Moritz says her accounting background and the writing skills she sharpened in undergraduate and law classes have served her well throughout her career, from preparing a legal opinion to reviewing the judiciary's budget.

"I've maintained friendships with Washburn and Washburn Law professors throughout my career," she said. "They gave me a solid education and the confidence I needed to succeed. Law faculty who provided references on my behalf through the years shared details about me beyond my transcript because they knew me personally."

At the School of Law, Moritz served as notes editor of the Law Journal, reviewing Eric Melgren's note on a tax topic that was selected for publication. The two became and remain friends, and their careers have intersected at pivotal times,



from Melgren's role as her boss at the U.S. Attorney's Office to his role as U.S. District Court Judge in swearing her in as a Circuit Judge for the 10th Circuit Court of Appeals at a private ceremony in August. Melgren received a law degree from Washburn in 1985.

Moritz said Melgren's counsel also was helpful during the arduous, two-year vetting, investigation, nomination and confirmation process that began with a phone call from the White House Counsel's office on Oct. 1, 2012. Once Moritz agreed to the nomination, she began assembling the required documentation and chronicling articles, papers,

presentations and hundreds of opinions she had written.

Moritz said, "After a two-year vetting process, it was a happy moment when we turned on C-SPAN May 5 and finally watched my confirmation. There was a lot of squealing in my house."

As with Melgren, key people in Moritz's life continue to loop in and out. The Salina Holiday Inn manager, Moira Brouddus, came to Washburn University to work as a catering manager and serve as the Alpha Delta house mom. She attended Moritz's first swearing-in ceremony.

"People like Moira helped me out tremendously along the way by

getting me needed opportunities," Moritz said. "Without her and the job she gave me when I was in high school, things might have been much different for me."

When Moritz became a Kansas Supreme Court justice, she occupied the chamber of her former employer and mentor Justice Harold S. Herd, ba '41, jd '42, who imparted the best career advice she ever received – encouragement to become active in the profession, and in particular, the Kansas Bar Association.

And her advice?

"Push yourself, don't get too comfortable in your practice, stay on top of the law, develop a specialty and get involved in your profession," she



Above: From left, Sarah (Landis) Roe, Kathleen Landis, Nancy Moritz and Carol Moritz. Nancy Moritz credited Washburn for the impact it has made on her life and career, saying: “I liked being part of a close-knit, on-campus community at Washburn; it was so easy to get involved and make friends.”

Left: Nancy Moritz and Eric Melgren met as Washburn School of Law students in the 1980s and have been friends since. Melgren, jd '85, swore Moritz into the 10th Circuit Court of Appeals at a private ceremony in August.

said. “It’s a great way to meet people from across the state while increasing your knowledge and skills.”

Herd’s former secretary, Susan Goodwin, is now Moritz’s office administrator. Moritz’s two daughters have also created parallel paths to their mother. Her youngest daughter is a Washburn University education major who worked as a resident assistant in the Living Learning Center for which Carruth Hall, where Moritz served as a resident assistant, was razed. Her older daughter participated in high school debate and is a first-year law student at Washington University, St. Louis.

Moritz received scholarships in law school and has made gifts

through the Washburn University Foundation to “allow someone else to benefit because I know how much that support meant to me,” she said.

Moritz is looking forward to working in the federal system again with 11 new colleagues and familiarizing herself with federal law and the laws of six states, but she is especially interested in receiving her official presidential commission through the mail just as her postmaster father did from President Dwight D. Eisenhower 60 years ago.

“I’d like my legacy to be that I was a friendly and approachable judge who people could expect to follow the law and know that I would do the right thing,” she said. 🏃‍♀️

## THE HONORABLE NANCY MORITZ CAREER AND SERVICE HIGHLIGHTS

- Research attorney, Kansas Supreme Court, 1985 to 1987
- Law clerk, U.S. District Court in Wichita, 1987 to 1989
- Associate, Spencer Fane Britt and Browne, Overland Park and Kansas City, 1989 to 1995
- Assistant U.S. Attorney, Kansas City, 1995 to 1999
- Appellate coordinator for U.S. Attorneys’ office, 1999 to 2004
- Judge, Kansas Court of Appeals, 2004 to 2010
- Justice, Kansas Supreme Court, 2011 to 2014
- Judge, 10th Circuit Court of Appeals, 2014
- Served on the Board of Editors for the Kansas Bar Journal for 20 years, was the first woman to chair the organization and authored several articles
- Served on the Kansas CLE Commission, the 10th Circuit Advisory Committee and the Washburn University School of Law Alumni Association Board of Governors



# A NEW HOME

Student housing facility on east side of campus on target

By Ernie W. Webb III • [ernie.webb@washburn.edu](mailto:ernie.webb@washburn.edu)

As displayed in an artist's rendering, the proposed new housing facility is L-shaped and consists of four levels. The building will be located on the east side of campus between Stoffer Science Hall and the Phi Delta Theta house and include about 350 beds. *Rendering courtesy of Washburn University*

Washburn's student housing project on the east side of campus took another step forward in October when the University's Board of Regents approved architectural renderings by firm HTK/KWK.

Construction on the 350-bed building is scheduled to begin in March 2015 and be completed in time for students to move in by August 2016.

"One of the things students look at when they choose a college is where they're going to live," said Rick Anderson, vice president of administration and treasurer, Washburn. "This facility will impact campus life and attract more students to our campus."

One of several projects included in Washburn's master plan, the \$30 million L-shaped building will be located between Stoffer Science Hall and the Phi Delta Theta house. It will consist of four levels with six-bed suites, four-bed suites and two-bed semi-suites.


The current design includes 339 student beds, seven residence advisers, a two-bed residence director apartment and two two-bed visiting faculty apartments for a total of 352 beds. The building also will feature a dining area.

"I think it will be a place that addresses many of our needs and adds a whole new dynamic to campus," said Denise Ottinger, vice president of student life, Washburn. "When you build these facilities, it jump-starts student life."

The University will borrow the majority of the funds to kick-start the project, while campus resources will be used to fund the dining facility. Anderson said students living in the building eventually will pay for the facility through room and board.

President Jerry Farley said the structure will address a need at the University.

"We've had a waiting list for student housing for several years now, and this facility will address that," he said. "We've seen what adding student housing can do for our campus with the Living Learning Center, and I anticipate that this will have a similar impact."

Opened in 2001 and located west of the Union, the Living Learning Center has 400 beds. Combined with the other housing facilities on campus, the new building will increase the number of beds on campus to more than 1,100. 

## FUTURE EDITIONS

Check out future editions of The IChabod for more renderings and updates on the student housing project.

# Leave a lasting IMPRESSION

The Brick Campaign  
for Morgan Hall



## Pave the way to Morgan Hall

Washburn is part of your past. You can be a permanent part of Washburn's future with a personalized brick on the Sesquicentennial Ichabod Plaza – the entryway to a renovated Morgan Hall and a new Welcome Center.

Both Morgan Hall and the front plaza – complete with a life-size Ichabod statue – will be unveiled Homecoming weekend, Oct. 23-24, 2015, in conjunction with Washburn's 150th anniversary. Your brick, along with those of other alumni, donors and friends, will pave the way for future students and

visitors to campus.

This is a first for Washburn – a plaza of bricks, each with a personal inscription. What a perfect way to show your Ichabod pride! Celebrate your connection to Washburn by putting your name on a brick. Honor a classmate, friend, family member or professor who made a difference in your life.

To be part of this historic moment, order your brick today. Or give a gift certificate to a family member or friend. Leave your legacy and support the renovation of Morgan Hall and the new Welcome Center.



8x8 logo paver: \$300  
4-line message  
(Keepsake replica: \$80)

8x8 paver: \$300  
6-line message  
(Keepsake replica: \$80)

4x8 brick: \$150  
3-line message  
(Keepsake replica: \$65)



4x8 display case: \$60

8x8 display case: \$75

Order your brick today at [GiveToWashburn.org/Bricks](http://GiveToWashburn.org/Bricks) or by calling 1.844.ICHABOD (424.2263).



CELEBRATE 150  
WASHBURN  
UNIVERSITY  
1865-2015

CELEBRATE  
150  
WASHBURN  
UNIVERSITY  
1865-2015

# LET THE CELEBRATION CONTINUE

Washburn enters sesquicentennial year

By Ernie W. Webb III • [ernie.webb@washburn.edu](mailto:ernie.webb@washburn.edu)

Three years after kicking off the countdown to Washburn's sesquicentennial, Year No. 150 has arrived.

The University has been celebrating its rich history since welcoming the class of 2015 at the 2011 convocation, and that will continue during the next year.

"We've done a wonderful job of celebrating Washburn's traditions during the last few years," said Jerry Farley, president, Washburn. "Now that 2015 is upon us, we will continue to do that and have even more to celebrate. A lot of people have worked hard on the sesquicentennial, and their work allows us to showcase what makes our University special."

Among the highlights during the first semester of Year No. 150 is the Lincoln Harman Lecturer. Steven Hahn, a Pulitzer Prize winner and professor of history at the University of Pennsylvania, will visit campus on Feb. 5.

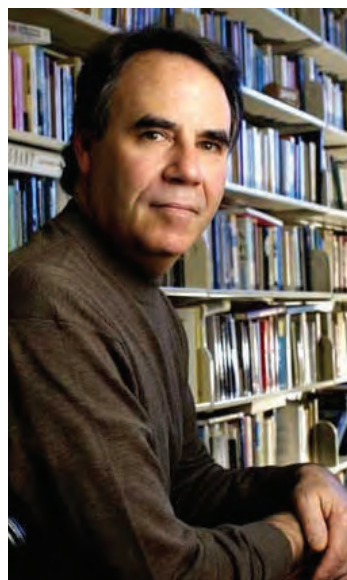
His lecture, "What Slaves Thought About Lincoln," begins at 7 p.m. Feb. 5 in the Bradbury Thompson Alumni Center.

Hahn, the Roy F. and Jeannette P. Nichols professor of history at Penn, specializes in 19th-century America, African-American history, history of the American South and international history of slavery and emancipation.

He has written several essays and books, including "A Nation Under Our Feet: Black Political Struggles in the Rural South from Slavery to the Great Migration." For his work on that book, Hahn received the Pulitzer Prize, Bancroft Prize in American History and the Merle Curti Prize in Social History.

Hahn has served as a professor at the University of Delaware; University of California, San Diego; and Northwestern University.

For more information about Hahn and the Lincoln Harman Lecture, visit [washburn.edu/150](http://washburn.edu/150). For more information on the University's sesquicentennial events in 2015, see pages 13-14.



Steven Hahn will be the Lincoln Harman Lecturer at 7 p.m. Feb. 5 at the Bradbury Thompson Alumni Center. A professor of history at the University of Pennsylvania, Hahn received a Pulitzer Prize for his book "A Nation Under Our Feet: Black Political Struggles in the Rural South from Slavery to the Great Migration." *Photo courtesy of University of Pennsylvania*

## DESIGNER SHOWHOUSE

The president's home is the 2015 Designer Showhouse, a grassroots fundraiser with a partnership between the homeowner, local designers and craftspeople, volunteers and Child Care Aware of Eastern Kansas.

As part of the process, the public is invited to a Bare Bones Preview Jan. 15-18 before renovations begin. Once the work is complete, the home will be open for display from April 25 to May 17.

Visit [washburn.edu/150](http://washburn.edu/150), [Facebook.com/washburn150](https://www.facebook.com/washburn150) and [Facebook.com/washburnalumni](https://www.facebook.com/washburnalumni) for updates on the project.

## MORE ON THE SESQUICENTENNIAL

- Ichabod statues and notecards created during the 2012 Art en Plein Aire event are available for purchase. Contact the Ichabod Shop at 785.670.2665 for more information.
- The University holiday ornament is available for purchase in the Ichabod Shop. In addition, a coffee table book will be completed and available in the spring semester. Contact the Ichabod Shop at 785.670.2665 for more information.
- View the fourth in a series of sesquicentennial videos, unveiled at the 2014 convocation, at [washburn.edu/150](http://washburn.edu/150).
- Read about fall 2014 sesquicentennial events, including a Department of Art alumni exhibit, School of Nursing celebrations and more at [washburn.edu/150](http://washburn.edu/150) and [Facebook.com/washburn150](https://www.facebook.com/washburn150).
- View photos from convocation at [Facebook.com/washburnalumni](https://www.facebook.com/washburnalumni) and videos at [Youtube.com/washburnalumni](https://www.youtube.com/washburnalumni).

# SAVE THE DATE



## JOIN US AND CELEBRATE 150 YEARS OF WASHBURN

### FEBRUARY 2015

**February 5:** Lincoln Harman Lecture featuring speaker Steven Hahn, the Roy F. and Jeannette P. Nichols professor of history at the University of Pennsylvania, at 7 p.m. in the Bradbury Thompson Alumni Center. Hahn is a recipient of the Pulitzer Prize.



**February 6:** Washburn's 150th Birthday Bash, including food and music, from 3:30 to 5:30 p.m. on the first floor of the Memorial Union. You will have an exclusive opportunity to purchase a Washburn University sesquicentennial coffee table book prior to public sale.

**February 7:** Washburn University sesquicentennial coffee table book available for purchase in the Ichabod Shop.

### APRIL 2015

**April 17:** Special concert performance by Tony Award winners Jeff Kready, an alumnus, and wife Nikki Renee Daniels at 7 p.m. in White Concert Hall.



**April 30:** Ichabods Around Town. By the end of this month, large fiberglass statues of Ichabod will be placed around town. Brochures and maps will be produced highlighting all statues and their locations.

**April:** WU Stock 150th Concert: Student concert.

## MAY 2015

**May 8:** President's concert featuring the special 150 sesquicentennial composition at 7 p.m. in White Concert Hall.

**May 15:** A Grand Graduation student celebration picnic on campus for sesquicentennial graduates.

**May 16:** Grand Graduation.



## JUNE 2015

**June 1:** Sesquicentennial commissioned artwork. Commissioned artwork by Ken Cooper for purchase, representing past and current Washburn University buildings in watercolor. On display at the Mulvane from June 1 to June 8, including a special reception at 5:30 p.m. on June 5.



## AUGUST 2015

**August 17:** Washburn student convocation, including the last in a series of videos about Washburn University.

This video will focus on the future of the University. The event begins at 4 p.m. in White Concert Hall.

**August 31:** The third and final issue of Ichabod Notables will be published.



## OCTOBER 2015

**October 23-25:** Sesquicentennial Grand Homecoming Weekend.

**October 23:** Morgan Hall Welcome Center and Sesquicentennial Ichabod Plaza grand opening.

**October 23:** Third in a series of Ichabod statues will be available for purchase in the Ichabod Shop during Grand Homecoming.

**October 23:** Final sesquicentennial holiday ornament will be available for purchase in the Ichabod Shop during Grand Homecoming.

**October 24:** Sesquicentennial Reunion Events.

**October 24:** Homecoming football game against the University of Central Oklahoma.

**October 24:** Sesquicentennial Bow Tie Bash at the Welcome Center and front lawn immediately following the football game.

**October:** KBI forensic lab facility grand opening.





# FIRST-RATE SERVICE

New center streamlines University's transaction process

By Ernie W. Webb III • [ernie.webb@washburn.edu](mailto:ernie.webb@washburn.edu)

From left, Angela Duncan, Colleen Averett, Lauren Spain, Janene Freerksen and Michala Keeler represent the staff for the Student Service Center. Duncan, former assistant director of admissions, is the director of the unit, which had 6,000 contacts with customers in August and has averaged more than 3,200 contacts per month since March. *Photo by Peggy Clark*

## It didn't take long for the Student Service Center (SSC) staff to receive feedback about their work.

A few weeks after opening during the summer, a Washburn student working with one team member asked to speak to Angela Duncan, the director of the center.

"She said, 'Where is your supervisor?'" Duncan said. "And our team member responded, 'She's right there behind me at that desk.' The student looked at me and said, 'I just want to tell you that she is great. I feel so much better after talking to her.' Others have come in and said similar things about the staff being helpful, so it's a very positive environment."

That's what University officials were hoping for when they began to discuss the center, which simplifies the transaction process for students and parents.

"What the Student Service Center is doing is transforming the way we do business at Washburn," said Richard

Liedtke, executive director, enrollment management.

"Our constituents can take care of most, if not all, of their transactions in one place. This will better serve our students and parents by making the process easier for them."

Before the SSC opened for business in March, students often had to make stops in several offices for such transactions as picking up a transcript, filling out a financial aid form or paying a bill.

Now, students can take care of all of those transactions at one location with the help of a university service adviser.

"This is an important step that we needed to take for our students," said Jerry Farley, president, Washburn. "Having people trained to handle all of these transactions will simplify business for them. Once a student comes to campus,


it is critical to make sure they have a great impression.”

The SSC currently is housed on the west side of Morgan Hall in Room 152, but the team will be located at the front of the Welcome Center when it opens in 2015. The center has five full-time staff members, including Duncan, former assistant director of admissions at Washburn, and four part-time cashiers.

Other staff members are Colleen Averett, bs' 14, Janene Freerksen, Michala Keeler and Lauren Spain. Freerksen previously worked in the registrar's office and Keeler the financial aid office. Eventually, the center will expand to 11 employees before the fall 2015 semester.

“Right now, it's still a learning process,” Duncan said. “We've been able to pull in some university service advisers from other departments, like the registrar office and the financial aid office. We're going to pool our resources and figure out where we need to make adjustments as we transition to the Welcome Center. It has been a learning curve for all of us, but we will iron out the kinks that we need to iron out before we move.”

In its first few months, the center has been a success. During August, the center served several hundred students and had 6,000 contacts (phone and in-person) with students. Since March, the SSC is averaging more than 3,200 contacts per month.

“One of the things that has surprised us is how quickly we've been able to get all the students through,” Duncan said. “Even during our peak time, we were averaging 5 to 10 minutes per person, so people were not waiting a long time, which is important.” 

## SSC SERVICES

### ADMISSIONS

- Submit application and check ongoing admissions status
- Check to see if we have received missing documents
- Answer questions about the admissions process

### BURSAR, CASHIER, BUSINESS OFFICE

- Review student accounts and pay tuition and fees
- Get more information about refunds, holds on accounts, payment plans, third-party payment inquiries and electronic billing
- Access and authorize users in WU-view

### FINANCIAL AID

- Get assistance with loans, grants, scholarships and work-study opportunities
- Answer questions about applying for financial aid and the FAFSA process
- Check aid status, receive information about verification, find out when to expect a refund check
- Find important dates and deadlines regarding the aid process

### REGISTRAR

- Receive assistance registering for or changing classes, accessing records, ordering transcripts, checking grades and filing a change of address or name change
- Answer questions about applying for graduation, holds on student accounts and using MyWashburn to enroll or check class schedules
- Check if transcripts have been received and reviewed

## FROM THE NOTEPAD

“The plan is to have university service advisers on the front line who can work with students in any capacity. They will be able to process forms, communicate directions and access information in our computer system. Our goal is for the vast majority of the informational and directional, processing, help desk kind of work to be done in one place.”

– Richard Liedtke, executive director, enrollment management

“I'm excited for the (Student Service Center). It's going to be very beneficial for our students and all the

staff. Students will be able to easily transition from one area or department, and it'll be more efficient for us. This will have a significant impact at Washburn.”

– Kris Klima, director, admissions

“We do a great job with students once they are on campus, and the Student Service Center will enhance our reputation for that. It's important that we give students a great early impression of our University.”

– Jerry Farley, president, Washburn

# 'FINE-TUNED' AT WASHBURN

## Scholarships help Mitchell make an impact on campus

By Lauren Cunningham

Chante Mitchell wants to help.

Helping others is her favorite aspect of being a resident assistant (RA) in the Living Learning Center, and it was her focus last summer working as a diversity and talent management intern in Westar Energy's human resources department.

She remembers Mindy Rendon, director, residential living, telling her and her fellow RAs during their training before students moved into the LLC that they would have a big impact on students' first impression of Washburn. Now in her second year as an RA, Mitchell, senior communications major, Topeka, still embraces that responsibility.

"I think the cool thing about being an RA is being someone other students look up to and come to if they need help," she said. "Helping others is something I've always been passionate about, but I've fine-tuned it at Washburn."

Mitchell's first impression of Washburn was one of support and encouragement. The scholarships the University offered her solidified her decision to come to Washburn.

"My scholarships have made it easier for me to be successful. There are so many great opportunities here," she said. "I like the smaller classes at Washburn, and I could tell right away professors had an interest in me."

Mitchell lived at home her freshman year. After a class in the Blair Room at the LLC, she noticed a flier about becoming an RA and decided to apply. She said working for residential living has been one of the best experiences at Washburn.

"My supervisors are the best. They've helped me grow

and challenged me, and they are invested in seeing me do better," she said. "They are like family."

On top of the responsibilities that come with being an RA, Mitchell is a member of Alpha Kappa Alpha and the Washburn Black Student Union and has been involved with the Leadership Institute. She spent her freshman and sophomore summers working with second- and third-graders at the Antioch Family Life Center in Topeka as part of Washburn's Learning in the Community program (LinC). She said that experience helped her see how important service was.

After helping with Westar's outreach to high school students this summer, Mitchell sees herself using her Washburn degree to work in youth advocacy.

Tracy Routsong, associate professor, communication studies, has known Mitchell both as an academic adviser and as a professor. She's noticed Mitchell's desire to be engaged and involved.

"Chante is one of those students who you know is going to have a positive impact in the world," Routsong said. "She just embodies all the characteristics of a great student."

Mitchell said she believes she has a responsibility to make the most of the opportunities her scholarships have provided.

"My scholarship support has helped tremendously, and it's something I take seriously in regard to doing well in my classes," she said. "Scholarships definitely make Washburn stand out and help students feel encouraged." 🙌

## SUPPORT

Scholarships provide a pathway to success for every student, regardless of field or finances, and reinforce what is at the heart of Washburn – to provide a world-class education for anyone who is willing to work for it. To support scholarships, a major component of 150 Forward: The Campaign for Washburn University, please go to [GiveToWashburn.org/GiveNow](http://GiveToWashburn.org/GiveNow).



Chante Mitchell, a senior communications major from Topeka, says that scholarships played a major role in her decision to come to Washburn and have made it easier for her to be successful. She works as a resident assistant in the Living Learning Center, which she says has been one of the best experiences at Washburn so far. *Photo by Earl Richardson*



# RENAISSANCE TEEN

Haney an entrepreneur, author, speaker and student

By Ernie W. Webb III • [ernie.webb@washburn.edu](mailto:ernie.webb@washburn.edu)

Owning a business, authoring a book, working as a motivational speaker and winning a national award are items one might find on the résumé of a seasoned entrepreneur. Zach Haney, currently a first-year student at Washburn, has accomplished all of that by age 19.

Known as “The Carnival Guy,” Haney has been running his own party rental business since his early days at Shawnee Heights High School in Topeka.

“We started with the organization I created my freshman year of high school, Teens Taking Action,” said Haney, a lifelong Topekan. “There wasn’t really a program that was run by teenagers in Shawnee County, and I wanted a way for teenagers to get involved in the area to give back.”

The first beneficiary of Haney’s work was the Topeka Rescue Mission, an organization he volunteered for as a child. Despite having a short timeframe to work with, Haney organized a carnival for children in a month.

“I thought I could pull the carnival together, but I didn’t realize the amount of planning and logistics behind it,” he said. “After planning that event for two years, I

realized Topeka needed a party rental company with great customer service and equipment.”

Haney’s idea blossomed into Carnival Guy Party Rentals, a company that has planned hundreds of events over the past few years. The business has progressed from one bounce house to one of the fastest-growing party rental companies in northeast Kansas.

It also has grown into a family business that employs Haney’s mother and his siblings. Haney’s father, a firefighter, also pitches in, and the company has several other employees.

“Working with family can be difficult, but it’s also a great experience,” he said. “It has been something to see the business grow. I’ve seen the events evolve and learned how to plan them better. These are the kind of events I’ve loved since I was a kid. I like to see the kids smile at our events. The thing I enjoy the

Washburn student Zach Haney has built his carnival business from a small, student-run organization to one of the fastest-growing party rental companies in northeast Kansas.

*Photos by Earl Richardson*

Haney, who won a national award that included a \$15,000 scholarship in 2014, builds balloon animals for children during the carnivals his company holds.

Haney's family business has grown from one bounce house to a company that owns such equipment as a Velcro wall and trailer in which he makes snow cones.



most is seeing the joy the kids have when we set stuff up.”

In July, Haney received the 2014 Dan Danner Leadership Award from the National Federation of Independent Business's Young Entrepreneur Foundation, which included a \$15,000 scholarship.

“It was an incredible honor, and I was able to tour Washington, D.C., with my parents when we accepted it,” he said. “The attention you receive from these awards is great, but I’m not the type of person to say ‘Look what I’ve done.’ I want to help people, encourage other young entrepreneurs to do these types of things.”

Haney spends much of his time away from class and his business doing just that as a motivational speaker at high schools. In addition, he spoke during the national fall leadership conference for Future Business Leaders of America, an organization he was involved in during high school.

Haney also wrote and published a book, “The Teen CEO,” a guide that addresses such topics as enthusiasm, emotion, hard work and purpose. He also won the first pitch competition held by the School of Business in November for a business idea he put together in class. 🦄

## ABOUT ZACH HANEY

**Hometown:** Topeka

**High school:** Shawnee Heights

**Studying:** Business

**At Washburn:** Member of Sigma Phi Epsilon, Leadership Institute and Collegiate Entrepreneurs Organization

**Family:** Father Ron Haney, mother Heidi Haney, sister Chelsea (Haney) Stringfellow, bsw '14, and brother Nick Haney

**Hobbies:** Singing, bike riding, hanging out with family

**Favorite carnival ride:** Velcro wall

## THREE QUESTIONS

**Q: Why did you choose Washburn?**

A: My last semester of high school I was in the Senior Academy at Washburn, and it gave me an opportunity to see what the school was all about. I got to meet some wonderful professors, and that helped a lot with my decision. It has turned out to be a great decision. The professors here care about giving you an education and what's going on in your life.

**Q: You have so much on your plate – how do you manage it?**

A: It can be tough. I have a really fast heart rate, and my doctor will say, “Zach, we need to work on that, get your stress level down.” I try to take a day each week, usually Sunday, go to church, have family dinner and family time on that day. Everyone needs that one day where you can relax and focus on what matters.

**Q: What are your plans after college?**

A: I think I'm always going to be a business owner because of that entrepreneurial spirit, but I also have a real passion for people and the community. I'd like to do something in the political field, anything I can do to better our city.

## ABOUT THE BOOK AND BUSINESS

For more information about “The Teen CEO,” including purchasing the book, visit Haney's website at [zachhaney.com](http://zachhaney.com). For more information about Carnival Guy Party Rentals, visit [kansascarnival.com](http://kansascarnival.com) or [Facebook.com/carnivalguy](https://www.facebook.com/carnivalguy).

*Student Entrepreneur 20*



# 'FELT LIKE HOME'

Alumnus, Tony winner to teach at alma mater

By Kim Gronniger

Jeff Kready and wife Nikki Renee Daniels will serve as Ruth Garvey Cochener Fink Professors of Leadership at Washburn from April 13 to April 17. The husband and wife are Tony Award winners who continue to star on Broadway. Kready received a bachelor of music degree in 2004. Photo courtesy of Jeff Kready

Broadway performer Jeff Kready, b music '04, appeared in Topeka Civic Theatre and Washburn Rural High School plays and sang with the Topeka Capital City Barbershop Chorus growing up. Despite a lifetime of singing, Kready credits his Washburn University instructors with developing a technique that's led to performances in two Tony-Award-winning productions.

The vocal music education and vocal performance major was already familiar with professors Kevin Kellim and Lee and Ann Marie Snook, chairwoman of the Department of Music, when he arrived on campus.

"Washburn felt like home from the very beginning," said Kready, whose parents and grandparents attended the University. "And if not for Dr. Lee Snook, I wouldn't have gotten my Broadway break. I owe a huge debt to him and other teachers."

After receiving his degree in December 2004, Kready worked as an elementary music teacher in Topeka. While awaiting a fall contract, a girlfriend persuaded him to pursue summer stock in Sullivan, Illinois.

"I made \$175 a week and worked 12-hour days, really the hardest work I've ever done," Kready said, "but I loved it."

When the job offer came to teach at a Topeka middle school, an age group Kready hoped to avoid, he fortuitously declined. He later landed a role in Lancaster, Pennsylvania, a three-hour drive from New York City that not only made his first Broadway audition in 2006 feasible, but also life-changing. He was selected for "Les Miserables" and fell in love with castmate Nikki Renee Daniels, marrying her in

2009 and welcoming daughter Lena in 2013.

Kready appeared in the Tony-Award-winning production of "Billy Elliot" and currently performs in a second Tony-winning musical, "A Gentleman's Guide to Love and Murder," playing 15 different characters.

"I wanted 'Billy Elliot' to win because I wanted that on my résumé," Kready said. "After Lena was born, I wanted the show I'm in now to win because I have a baby to support. My perspective has changed."

Kready performs on 48th Street and will play a lead role as Monty Navarro this winter. Nearby on 49th Street, Daniels portrays Nabulungi in "The Book of Mormon" with Tommar Wilson, one of several actors with Topeka roots with whom the couple socializes. Wilson played the Artful Dodger in a Topeka Civic Theatre production of "Oliver" with Kready in the title role.

The couple has performed on Daniels' album "Home," as well as in "A Broadway Romance" symphony concert and as guest artists for the Topeka Festival Singers in 2013. Their collaboration continues April 13-17 as 2014-2015 Ruth Garvey Cochener Fink Professors of Leadership, coaching students, conducting high school clinics and wrapping the week with a concert fundraiser for the Department of Music, "Broadway in the Heartland."

Kready is eager to return to familiar classrooms and reconnect with his early teaching aspirations.

"I'm convinced that if I'd been offered a high school teaching contract in 2005, I would happily be a teacher today," he said. 🎭

# ALUMNI FELLOWS

Eight alumni were honored during the Fellows Luncheon on Nov. 14 at the Bradbury Thompson Alumni Center: Grace Sawyer Jones, b ed '60, Norwich, Connecticut; Cally Krallman, bfa '81, Topeka; Michael Kuckelman, bba '86, jd '90, Olathe, Kansas; Kenneth Lynn, ba '78, Overland Park, Kansas; Fred Palenske, bba '82, mba '88, Topeka; Carrie Saia, bsn '88, Delia, Kansas; Dale Schafer, aas '05, Topeka; and Ronald Schweer, bs '80, Lawrence, Kansas.



## GRACE SAWYER JONES

B ED '60, RETIRED  
PRESIDENT, THREE  
RIVERS COMMUNITY  
COLLEGE

COLLEGE OF ARTS AND  
SCIENCES HONOREE

Grace Sawyer Jones is a native of Topeka and resident of Norwich, Connecticut. She enjoyed a long career in education, including as president of Three Rivers Community College in Norwich, until she retired last summer.

She previously worked as vice president for multicultural affairs at the State University of New York, College of Oneonta, where she also worked as a professor.

Jones was the president of the College of Eastern Utah, Price, a longtime educator and administrator at Berkshire Community College and a physical education and science teacher in Chicago.

She was named citizen of the year by the Chamber of Commerce of Southeastern Connecticut and received the Distinguished Service Award from the Washburn Alumni Association in 1986, among numerous awards and recognition for extensive community work.

**About Washburn:** "Washburn was foundational to my personal and professional growth. I entered Washburn planning to transfer after my freshman year; however, 'home' was instant. Home was Thomas Gym, Morgan library and the Union, where I learned to play bridge!"



## CALLY KRALLMAN

BFA '81, ARTIST AND  
PROPRIETOR OF PRAIRIE  
SAGE STUDIO

COLLEGE OF ARTS AND  
SCIENCES HONOREE

A native of Goodland and a resident of Topeka, Cally Krallman is a renowned artist and the proprietor of Prairie Sage Studio. She also works as a freelance real estate photographer, co-manager of a family farm in western Kansas and songwriter.

Krallman previously worked as a graphic designer and sales executive in the screen printing industry.

Her work has been displayed in exhibits across the globe,

including Tbilisi, Georgia, at the international Art in the Embassies program.

Krallman is a member of the Oil Painters of America, National Oil and Acrylic Painters Society, Missouri Valley Impressionists Society and American Women Artists.

She has served on boards for the Topeka School Fund and Topeka Art Guild and donated fine art to dozens of organizations.

Krallman was the winner of the Kansas 150-Sesquicentennial Art Competition.

**About Washburn:** "Washburn was just the right size to suit my personal needs of a college. It allowed me to make lifelong friendships, and I got personal attention in my classes."



## MICHAEL KUCKELMAN

BBA '86, JD '90, PARTNER,  
KUCKELMAN TORLINE  
KIRKLAND AND LEWIS  
SCHOOL OF LAW HONOREE

A native of Atchison and a resident of Olathe, Michael Kuckelman is a partner at Kuckelman Torline Kirkland and Lewis specializing in commercial and personal injury case.

Kuckelman previously worked as an attorney at Blackwell Sanders and was a member of the plaintiffs' executive committee appointed by the U.S. District Court for the Southern District of New York to litigate the 9/11 World Trade Center litigation.

He is a member of the Kansas, Missouri, New York, U.S. Supreme Court and Supreme Court of England and Wales bars.

Kuckelman's community service includes the Catholic Education Foundation Board, Maur Hill Mount Academy prep school board of directors and the Washburn University Foundation board of trustees.

**About Washburn:** "As an undergraduate, my best memory is my time in the Alpha Delta fraternity house. I made lifelong Washburn friends in the house and count several of them as close friends today. Washburn provided an environment that allowed me to explore and to consider my options, which ultimately led me to an incredibly satisfying career in litigation."



## KENNETH LYNN

BA '78, COO, UNIVERSITY  
OF KANSAS INSTITUTE  
FOR ADVANCING  
MEDICAL INNOVATION  
COLLEGE OF ARTS AND  
SCIENCES HONOREE

Kenneth Lynn is from Belleville and lives in Overland Park. He is the chief operating officer for the University of Kansas Institute for Advancing Medical Innovation and is an adjunct professor in the Department of Health Policy and Management at the University's School of Medicine.

Lynn also co-owns Dark Holler Design Works, which specializes in production design, prototyping and small

scale production, and previously served as the executive vice president of business development for NewLink Genetics Corp., among several other positions in a career in the biopharmaceutical industry that spans 30 years.

He coached two KU law school teams in the 2014 transactional law meet and served on the school's research board of trustees, among several committees and boards.

**About Washburn:** "One memory in particular that comes to mind is the time I walked into Howard Faulkner's Traditional English Grammar class a few minutes late and was greeted by spontaneously erupting boos and hisses, which struck me as a bit harsh. As it turns out, the reason was that I'd scored 104 percent on an exam and blew the curve."



## FRED PALENESKE

BBA '82, MBA '88, SENIOR  
VICE PRESIDENT  
OF PROVIDER AND  
GOVERNMENT AFFAIRS  
FOR BLUE CROSS AND  
BLUE SHIELD OF KANSAS  
SCHOOL OF BUSINESS  
HONOREE

A native and resident of Topeka, Fred Palenske is the senior vice president of provider and government affairs for Blue Cross and Blue Shield of Kansas.

He joined Blue Cross and Blue Shield in 1988 after four years at the Kansas Insurance Department. At BCBSKS, he has served as a contract specialist, manager of regulatory compliance, director

of regulatory compliance and legislative affairs, and vice president of provider relations and medical affairs.

Palenske is a member of the BCBSKS and American Red Cross disaster response team and on the board for the Ichabod Athletic Fund.

He participated in Leadership Topeka in 2002 and Leadership Kansas in 2006 and was an offensive captain on Washburn's football team during his senior season.

**About Washburn:** "The education I received at Washburn prepared me well to succeed in the business world. The small class sizes and the fact that Washburn used full professors in their business school helped to ensure that I received a high quality education. Washburn provided the perfect environment for me to develop a skill set that would serve me well in my career."



## CARRIE SAIA

BSN '88, CEO, HOLTON  
COMMUNITY HOSPITAL  
SCHOOL OF NURSING  
HONOREE

A native of Holton and a resident of Delia, Carrie Saia is the chief executive officer of the Holton Community Hospital. Saia has worked for St. Francis Health for more than 20 years.

Saia also has worked as an administrative director of inpatient units, telemetry department director, critical care department director, emergency department director,

charge nurse and flight nurse during her career.

She is a member of Holton Business Women, Holton Rotarian and the United Way board, as well as serving as president of the Kansas Organization of Nurse Leaders.

Saia received the inspiring administrator summit award from Custom Learning Systems, a leadership academy fellowship from Cohort II and a clinical excellence nurse leader award from St. Francis Health Center.

**About Washburn:** "Washburn University has been instrumental in providing me a solid foundation for my professional nursing career. I was surrounded by outstanding nursing clinical instructors and faculty who challenged me to be successful by engaging and pushing myself to make the most of each day or opportunity."



## DALE SCHAFER

AAS '05, INSTRUCTOR  
OF MACHINE TOOL  
TECHNOLOGY AT  
WASHBURN INSTITUTE  
OF TECHNOLOGY  
WASHBURN TECH HONOREE

Dale Schafer is a native and resident of Topeka and an instructor of machine tool technology at Washburn Institute of Technology.

Before working at Washburn Tech, Schafer was the production manager and assistant plant manager at Wilch Manufacturing Inc. in Topeka.

Schafer has worked as a machining instructor for several area companies for nearly 30 years.

He served in the Marines during the Vietnam War and is a past president of the Sawdusters woodworking club. Schafer served on the advisory board at Washburn Tech and is a member of the board of trustees for the Lowman United Methodist Church.

**About Washburn:** "I was offered a job with Wilch Manufacturing before I completed classes at Kaw Area Vocational-Technical School. For more than 25 years, I worked as a machinist and supervisor at Wilch. When I accepted my current position at Washburn Tech, it brought me back full circle to the school where I received my initial training. My fondest memory is being a member of the last class to graduate from the brick, two-story 1800s school house at 620 S.W. Harrison St. in May 1968."



## RONALD SCHWEER

BS '80, CHIEF U.S.  
PROBATION OFFICER,  
DISTRICT OF KANSAS  
SCHOOL OF APPLIED  
STUDIES HONOREE

A native of Paola and resident of Lawrence, Ronald Schweer is the chief U.S. probation officer of the District of Kansas for the U.S. Courts and U.S. Department of Justice.

He previously worked as the deputy chief U.S. probation officer in the Eastern District of Missouri and as a supervising U.S. probation officer for the District of Kansas.

Schweer is a member of the chiefs advisory group for the

Administrative Office of the U.S. Courts and the Community Corrections Collaborative Network, as well as several boards in his field.

He received the Walter Dunbar Award from the American Probation and Parole Association and the Outstanding Probation Executive Award from the National Association of Probation Executives.

**About Washburn:** "Washburn is the cornerstone of the foundation on which my career has been built. ... I was raised in a small town and Washburn provided a 'like home' environment for me. I also met my wife, Brenda, at Washburn, and we have been married 34 years. Our combined families have seven Washburn graduates, two attendees and one current student."

### ONLINE

View photos from the Alumni Fellows luncheon on the Alumni Association Facebook page at [Facebook.com/washburnalumni](https://www.facebook.com/washburnalumni) and videos on our YouTube page at [Youtube.com/washburnalumni](https://www.youtube.com/washburnalumni).

Alumni News 24



# GROWING UP AT WASHBURN

Board president has followed University transformation since childhood

By Ernie W. Webb III • [ernie.webb@washburn.edu](mailto:ernie.webb@washburn.edu)

Alumni Association board of directors president Jeanne Vawter grew up at Washburn, playing in the pine trees and at Morgan Hall as a child. She has two degrees from Washburn, a bachelor of arts in psychology and a master of education administration, as well as a teaching certificate. *Photo courtesy of Jeanne Vawter*

**A**s a child, Jeanne (Marker) Vawter spent much of her time playing on Washburn's campus, climbing pine trees on the northeast corner of campus and riding the elevator up and down newly built Morgan Hall.

Little did she know she'd be the president of the board of directors for the Alumni Association years later as Morgan Hall undergoes a multimillion-dollar renovation to build the University's Welcome Center.

"I grew up at Washburn," said Vawter, who became the board president in July. "My dad went to school here, and we lived on campus from 1953 to 1957; then we lived across the street for years.

"To be here when the building is transforming – it's special. What tremendous progress. I'm so proud to see the growth at my alma mater."

A Topeka High alumna, Vawter experienced another defining moment as she was preparing to leave for college.

"We lived at 1616 Boswell when the tornado hit in 1966," Vawter said. "I remember I'd just had my 18th

birthday and graduated from high school, and my mother told me I needed to clean my room thoroughly before I left. I spent the whole day cleaning it. That evening, the tornado hit and there was broken glass and water all over the room I'd just cleaned.

"I remember walking to my grandparents' house to see if they were OK, and they were, but I'll never forget looking at campus. It looked like a bomb went off."

After attending Baker University for two years, Vawter returned to the Washburn campus to finish a degree in psychology in 1970. While finishing her bachelor of arts, she was a member of Zeta Tau Alpha and met her husband of 44 years, Russ Vawter, ba '68.

"Honestly, we did not hit it off at first. I'm very social, and Russ is very meditative and laid-back," she



Board president Jeanne Vawter, at a Top of the Tower luncheon, said the bimonthly event in downtown Topeka is one of her favorite Alumni Association gatherings.

*Photo by Ernie W. Webb III*

said. “It was a blind date set up by mutual friends, and my friend kept asking me, ‘What do you think?’ And I kept saying, ‘Oh, I don’t know.’ I’m sure I was worried about other things at that point as a 22-year-old.

“We went to Homecoming and danced and had a pretty good time. He tried to give me a kiss and I slammed the door in his face and thought I’d never see him again! Well, he called, we went to a movie, had a great time, and the rest is history.”

Jeanne Vawter worked at the Menninger Clinic for three years before becoming a stay-at-home mom into her late 30s. She returned to the workforce as a paraprofessional in 1984, received a teacher certification from Washburn in 1986 and worked as a long-term substitute science teacher at Highland Park High School.

She later taught science full time at Robinson Middle School for several years before working her way up to assistant principal and principal at Jardine Middle School, retiring in 2010.

“I did not plan on being a teacher, but my experience as a paraprofessional showed me that that’s what I wanted to do,” said Vawter, who also received a master of education administration at Washburn in 1993. “I loved being an educator. It was a very rewarding experience, and I found that what I learned at Washburn in psychology was extremely valuable, as was my experience as a mother.” 🚶

## ABOUT JEANNE VAWTER

**Hometown:** Topeka

**Education:** Topeka High alumna; received bachelor of arts in psychology in 1970, teacher certification in 1986, master of education administration in 1993

**Occupation:** Retired educator. More than 20 years as a teacher and principal in Topeka

**Family:** Husband Russ, ba '68; daughters Becky and Amanda, son Ryan, six grandchildren

**Favorite music:** “My musical tastes are pretty eclectic. Right now, I’m into Pink. But I also love Bob Marley, Otis Redding and The Beatles.”

## THREE QUESTIONS

**Q: What are some goals you have as Alumni board president?**

A: One is the Fun Run. I’d like to see it expanded. We can take a look at that and see what we can get going. Another is getting more young people involved, and not just the young ones right out of college. I’d really like to get young families involved.

**Q: How did you get involved in the Alumni Association?**

A: (Former board member) John Ybarra asked if I’d be interested in joining. John and my son used to play baseball against each other, and my kids worked for John’s dad, so we knew the Ybarra family. We started coming to After Hours, reconnected with them and that’s how we got started.

**Q: How has the Washburn experience shaped your life?**

A: I’m not sure I took the importance with me when I graduated from Washburn. I learned over time how important it was to me. Being here gave me an education, a way of thinking on my own. It provided me with a structure that I needed to have a great job that I loved.

## BOARD OF DIRECTORS

- Vice president Dawn (Fernandez) Dennis, as '99, Topeka
- Javier Gonzalez, mba '02, Dallas, Texas
- Billie Jean (Bergmann) Graham, bba '09, Topeka
- John Haverty, ba '99, Topeka
- Liz (Zirger) Hochschieb, aa '80, ba '80, Overland Park, Kansas
- David Manley, bba '67, Auburn, Kansas
- Pam Manning, ba '90, Topeka
- Mike Mustain, bs '76, Basehor, Kansas
- Paul Nutter, mba '01, Topeka
- Mike Rohlmeier, bba '02, Wichita, Kansas
- Mark Ross, bba '83, Overland Park, Kansas
- Eric A. Taylor, bba '03, Olathe, Kansas
- Gail (Gottschalk) Urban, mba '99, Manhattan, Kansas
- Mandi Walter, bba '09, Topeka
- Suzanne (Clarke) Zurn, ba '95, Reston, Virginia

*Alumni News 26*

# ICHABOD PRIDE UNLEASHED DURING HOMECOMING

By Ernie W. Webb III • [ernie.webb@washburn.edu](mailto:ernie.webb@washburn.edu)



Above: Student organizations based their floats on the theme "Ichabods Unleashed." Photo by Peggy Clark

Left: Carly Willis and Alex Crume, with Washburn President Jerry Farley and Ichabod, were crowned Homecoming queen and king. Photo by Peggy Clark

Washburn unleashed a week to remember during Homecoming from Oct. 13-18. The Homecoming Ball on Oct. 13 kicked off the week, which included a Late Night Breakfast after the ball and the Ichabod Race the following day.

Other notable events during the week were Scorch on the Porch and Open Mic Night on Oct. 15, WU Chef and Yell Like Hell on Oct. 16 and the parade on Oct. 18.

The Washburn Alumni Association hosted After Hours on Oct. 17, as well as a tailgate party before the Ichabods' game against Missouri Western State University at Yager Stadium.

After Hours was sponsored by the Student Recreation and Wellness Center, which also celebrated its 10-year anniversary with an open house on Oct. 17.

During halftime of Washburn's game, Alex Crume and

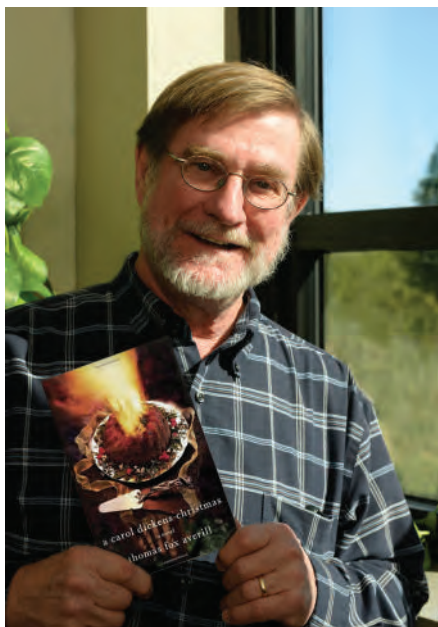
Carly Willis were crowned king and queen of Homecoming.

Crume, a senior from Topeka, is the president of Sigma Phi Epsilon and special events director for the Washburn Student Government Association. He is pursuing a degree in math education and plans to become a math teacher and coach.

Willis, a senior from Newton, Kansas, is a member of Zeta Tau Alpha and the president of Order of Omega. She is pursuing a degree in mass media and plans to work on a master's degree and work for a TV news station or public relations agency. 🏃

## HOMECOMING WINNERS

To view a complete list of winners during Homecoming week, visit [Washburn.edu/homecoming](http://Washburn.edu/homecoming).



# PROFESSOR'S SAGE TAKE ON DICKENS A RECIPE FOR HOLIDAY REFLECTION, REVELRY

By Kim Gronniger

Professor of English and writer-in-residence Tom Averill published his latest book, "A Carol Dickens Christmas," in 2014. The book is set in Topeka and is about a reference librarian and the Christmas season. *Photo by Peggy Clark*

With a college-bound son, a dying dog and an ex-husband moving from Topeka to Arizona, Carol Dickens tries to allay her abandonment anxiety through her annual tradition of replicating holiday meals inspired by "A Christmas Carol."

Amid servings of Twelfth Cake and clove-infused cocktails, the protagonist of Tom Averill's latest book strives to create a perfect celebration as she copes with midlife transformation in the nostalgic clutches of Christmases past.

For years, Averill, professor of English and writer-in-residence, and his family traveled to his in-laws' home in Dallas for the holidays, soon discovering that the eight-hour trip was the ideal amount of time in which to read Charles Dickens' "A Christmas Carol" aloud. Averill's fascination with the book continued throughout the upbringing of his daughter, Ellie, and son, Alex, and served as the impetus for "A Carol Dickens Christmas."

Ten years in the making, its publication arrives when Alex is a senior in high school, just like the fictional Finn. Carol's character is based in part on Averill's late mother, "a generous keeper of Christmas who liked to cook," he said. "I like to write about people who care for and help one another as they discover who they are and the skills and talents they can use for good."

Set in Topeka, the book highlights old-shade neighborhoods and historic landmarks. Carol works as a reference librarian and semicolon researcher in an unnamed university library Averill deliberately fictionalized so people wouldn't misconstrue any plot points as workplace commentary.

Having taught at Washburn University for 35 years,

he is grateful for the investment the University has made in his career as a professor and author and the gift of subsidized literary research provided through grants and donor generosity.

During a mid-December trip to London in 2003, Averill retraced Dickens' steps, steeping himself in the sights, sounds, dishes and drinks Dickens depicted in five Christmas books. Averill's book contains the researched Dickens recipes Carol creates, all of which were taste-tested in the family kitchen.

Averill also appreciates the expertise of his Washburn colleagues, particularly Howard Faulkner, professor emeritus, English, and Miguel Gonzalez-Abellas, professor and chairman, modern languages, who helped edit the book.

"Christmas books have their own stiff requirements – sentiment without sentimentality, hope without overdone joy, the rituals of eating, decorating, gift giving, love, charity, generosity, wise men, a child being born – all of which have to come together as a satisfying read for people besides me," Averill said, laughing. "Completing something and having it find an audience it resonates with is like having had a really good conversation. Then it's on to the next project." 🚶

## WHERE TO FIND THE BOOK:

"A Carol Dickens Christmas" is available for purchase in the Ichabod Shop on campus, Barnes and Noble in Topeka (6130 S.W. 17th St.) and Raven Book Store in Lawrence (6 E. 7th St.), as well as at [amazon.com](http://amazon.com) and [barnesandnoble.com](http://barnesandnoble.com).

# VISITING PROFESSOR TEACHING STUDENTS BUSINESS AND ART OF CREATIVE CAREERS

By Sarah Towle • [stowle@wufoundation.org](mailto:stowle@wufoundation.org)

Teaching students to present their art in different ways and create a sustainable living as a professional artist is the goal of Washburn University's newest Catron Professor of Art, Marin Abell.

In the spring of 2014, he empowered students with the combined roles of artist, curator, architect and gallerist by providing them with customized plywood kits designed to be transformable.

Each contained materials that could be used to join objects together into sculptures in non-invasive ways, such as with Velcro, rubber bands, tape, paper clips, plastic bags, etc. Students were encouraged to build a sculpture using any material and return the kit with their sculpture attached to it, along with specific details of how they wanted their sculpture presented within the exhibition as a whole.

He then installed the collective exhibition at an outdoor sculpture park in Kentucky by following their directions for curation to the letter – and within the constraints that the park's hilly terrain allowed.

"I want students to realize there are methods of presenting art that's not on the wall," he said. "Art is not just about making a sculpture, but also about becoming an architect of the space in which it's presented."

One of the many ways Abell curates his own art differently is by getting out of the studio and into the community and environment, something the Donald B. and Twila Catron Sr. Professorship of Art encourages professors to do.

The professorship, established in 2002 by Jim and Norene Ketcherside in memory of Norene's parents, encourages expanded teaching content in the Department of Art and outreach art activities for the Mulvane Art Museum. For more than 10 years, each Catron professor has defined the position in his or her own way, and Abell is no different.

"Having the professorship affords both the Washburn

art department, and myself, with a lot of opportunities," he said. "It gives an artist the valuable resources of time, space and supplies to work on community art projects, and I'm very thankful for that opportunity."

Abell remembers the uncertainty of what to do next as a young artist just finishing his undergraduate degree from James Madison University, and he understands and enjoys guiding students as they move into the professional practice of art.

Through his professorship at Washburn, he is working with a senior art production class and pairing each student with a professional artist to learn more about life after graduation and the business side of the art world.

While his own focus in the art world has changed through the years, he has one common thread in mind: he has taken opportunities where he is able to interact and collaborate with others on projects.

"I like the students – their energy and enthusiasm," he said. "When you're at a university, you're immediately engaged with a community of creators, so that makes this place very special." 🙌

## SUPPORT:

Our faculty are the very core of the Washburn educational experience. Our distinguished programs set us apart from other institutions. Supporting faculty and program initiatives, such as the Catron Professor of Art, is a major component of 150 Forward: The Campaign for Washburn University. To support the work of faculty members at Washburn, please go to [GiveToWashburn.org/GiveNow](http://GiveToWashburn.org/GiveNow).



Marin Abell, the Catron Professor of Art, says about Washburn: "I like the students – their energy and enthusiasm. When you are not at school, it's hard to find that community of creators, so that makes this place very special."

*Photo by Earl Richardson*



# IMAGINE ART FOR A LIFETIME: GALA CELEBRATES 90 YEARS OF MULVANE ART MUSEUM

By Michaela Saunders • [michaela.saunders@washburn.edu](mailto:michaela.saunders@washburn.edu)

The diversity and imagination of human creativity was on full display Oct. 10 as the Mulvane Art Museum celebrated its 90th anniversary with a gala event.

With Washburn music majors providing the auditory stimulation, hors d'œuvres on all three floors, the option to make a craft at ArtLab, and, of course, the incredible art, the museum was a feast for all senses during the gala: Imagine Art for a Lifetime.

In addition to a silent auction of 49 pieces and the live auction of a painting and two experiences, the event offered a time for those passionate about art in Topeka to visit, celebrate success and commit to the future.

“This evening is about ... 90 years of providing arts programs on our campus and across the community,” said Connie Gibbons, director, museum. “You make it possible for us to be here and to do all of the incredible work we are doing.”

And there is, indeed, a lot to be celebrated. Last year,

60,000 individuals were served by the Mulvane, either at the museum or in a community outreach activity. More than 2,000 Washburn students were engaged, more than 22,000 people enjoyed ArtLab and more than 2,200 school children in Topeka’s USD 501 and elsewhere were served, Gibbons said. Among those 60,000 people, 52,000 participated at no cost.

The number of exhibits featured doubled in the last year, and the museum has recommitted to showcasing its own collection.

During the gala, art featured at the museum included an exhibit of handcrafted walking sticks, the special alumni exhibition that featured graduates across many decades and ArtLab activities related to walking sticks and Dia de los Muertos.



Above left: Connie Gibbons, director, Mulvane Art Museum, credited supporters for the facility's success, saying, "You make it possible for us to be here and to do all the incredible work we are doing."

Above right: Mulvane Art Museum served about 60,000 people in the past year, and more than 22,000 people enjoyed the ArtLab. The museum is in the midst of a campaign to raise \$2 million to support its endowment.

Left: Visitors celebrated Mulvane Art Museum's 90th anniversary during an Oct. 10 gala. Nearly 50 pieces of art were auctioned off at the event.

*Photos by Peggy Clark*



## WHAT IT TAKES TO MAKE A DIFFERENCE:


- **\$50** provides supplies and materials for one ArtLab workstation for one month
- **\$100** provides a scholarship for one summer art class
- **\$500** is the artist fee for one educational program

Michael Franklin, honorary event chairman, said the theme "Imagine Art for a Lifetime" resonates with his family. His wife has brought hundreds of children to Mulvane, and his family visits regularly. He thanked those gathered "for sharing your time, your talent and your treasure to help sustain this gem."

Admission to the museum always is free because of a commitment to keep the enjoyment of art accessible and attainable for all. But, keeping Mulvane and all of its outreach going costs \$25 per guest.

A new planned giving campaign aims to raise \$2 million in gifts to support the Mulvane endowment.

"This will create a solid base for the Mulvane," said JuliAnn Mazachek, president, Washburn University Foundation. "We are proud to partner with the Mulvane on this important project."

If you believe art matters, support Imagine: The Campaign for the Mulvane Art Museum by going to [GiveToWashburn.org/Mulvane](http://GiveToWashburn.org/Mulvane) or by calling 785.670.4483. 

## STUDENT ENSEMBLES PROVIDED MUSIC ON ALL THREE FLOORS

Colleen Dilmore, a junior from Paola, Kansas, and Molly Hodson, a junior from Topeka, played a flute duet. Both are music performance and education majors. They performed on the third floor.

The jazz combo of Paul Priddy, a freshman music education major from Topeka, Forrest Evans, a junior music education major from Topeka, and Nico Williams, a senior music performance major from Topeka, performed on the main level.

A string quartet played in ArtLab. It featured Zachary Cope, a junior music performance and education major from Topeka, on violin I; Samantha Silver, a junior music education major from McPherson, Kansas, on violin II; Ryan Masotto, a sophomore music education and performance major from St. Louis, Missouri, on viola; and Brett Lytle, a freshman music education major from Topeka, on cello.



# BUSINESS GROWTH

School adds programs for entrepreneurship and innovation, international business

By Ernie W. Webb III • [ernie.webb@washburn.edu](mailto:ernie.webb@washburn.edu)

From left, Dmitri Nizovtsev, associate professor of economics and international studies coordinator; David Price, assistant professor of marketing; and David Sollars, dean, have been instrumental in developing the entrepreneurship and innovation and international business programs. *Photo by Peggy Clark*

One of the directives outlined in Washburn University's Vision 2022 plan is "preparing graduates for success in their chosen profession and stimulating economic vitality."

The School of Business has taken that to heart with the addition of two concentrations for the fall 2014 semester: bachelor of business administration degrees in entrepreneurship and innovation and in international business.

Coupled with the master of accountancy (MAcc) program implemented during the fall 2013 semester, the additions demonstrate continued growth in the School.

"As the world of business continues to evolve and grow, it's important that we keep pace to remain competitive and to provide our students with the skills they will need in the workplace," said David Sollars, dean, School of Business. "We've been pleased with the early returns on our MAcc program, and we've rolled out two new majors that will help us meet the needs of all of our students."

## ENTREPRENEURSHIP AND INNOVATION

Though he had a bachelor of business administration and a master's degree, David Price, assistant professor, marketing, found the transition to the private sector to

be a little more difficult than expected when he began working for a startup business.

"I discovered that there were some things we just didn't learn in class when I was working at the startup," said Price, who led the task force implementing the entrepreneurship and innovation concentration. "As we began to work on this project, I thought we could prepare our students for those things that weren't being taught, namely through hands-on experience.

"In each class, we're working in partnership with a business in the community, and students have to take what they're learning in class and apply it with a client."

Under the direction of Karl Klein, the Washburn University Kansas Small Business Development Center (WUKSBDC) has been instrumental in connecting students with small businesses to provide the hands-on experience emphasized in the program. In addition, the WUKSBDC teaches the capstone class for the concentration, the Entrepreneurship Clinic.

"The Small Business Development Center continues

to be a tremendous asset for the School of Business and the community,” said Price, who played tennis at Washburn and received a bachelor of business administration from the University in 1992. “They will be instrumental in helping us grow this program.”

In addition, the School of Business held its first pitch competition in November. The event provided students with an opportunity to develop business ideas and pitch them to a panel of judges serving as potential investors.

The competition was supported by Go Topeka, the city’s economic development initiative, which provided \$12,000 in prize money for the top six finishers.

The school also added a half-time faculty position, Rick LeJuernne, to bolster the program. LeJuernne, bba ’90, is a longtime entrepreneur and adjunct faculty member who carries the title entrepreneurial evangelist.

“We want to build a culture of entrepreneurship at Washburn,” LeJuernne said. “I wanted to be a part of that. We can do some special things for our students in this program.”

## INTERNATIONAL BUSINESS

The world of business has gone global, and Washburn’s School of Business has followed suit for years now, through various courses taught by a faculty that includes professors from countries such as Russia, Australia, Romania, Kenya and Korea and study-abroad programs in China, Belgium and other foreign countries.

The School also offered a minor in international business, which laid the foundation for its new degree in the concentration.


“We did a survey of our students to gauge their interest in the major, and the numbers showed that the interest was there,” said Dmitri Nizovtsev, associate professor of economics and international studies coordinator. “We started getting questions about having this program a few years ago and developed it piece by piece. The demand for graduates with training in international business is growing, so we needed to provide this concentration for our students.”

In addition to 12 upper-division elective hours in accounting, business or economics within school, the international business concentration required courses are Cross-Cultural Management, International Marketing, International Economics or International Finance, and

Multinational Enterprise Practices.

Students must also complete one of the following: International Business and Entrepreneurship Experience, no less than three credit hours earned through a university-approved study abroad or international internship, or six credit hours of course work in one of the modern foreign languages at the intermediate level or above.

“What we’re doing is ensuring that the students have the hands-on knowledge they will need in international business, combined with the taught knowledge from faculty,” Nizovtsev said. “For example, Michael Stoica (distinguished professor of marketing) has led our program in China and taken students there for several years. This coming summer, we will take a faculty-led group of students to Belgium, and we’re planning to expand those offerings to enhance the students’ knowledge of international business.”

Faculty also will lead the winning team of the pitch competition abroad. That group will travel to an international pitch competition. 

## ONLINE

- Read more about the entrepreneurship and innovation and international business concentrations at [washburn.edu/business](http://washburn.edu/business).
- Read more about Price, Nizovtsev, Sollars and other School of Business faculty at [washburn.edu/our-faculty](http://washburn.edu/our-faculty).
- Read more about Rick LeJuernne’s presentation at Wake Up With Washburn at [washburn.edu/alumni-wakeup](http://washburn.edu/alumni-wakeup). View photos of his presentation at Facebook.com/washburnalumni and videos at [Youtube.com/washburnalumni](http://Youtube.com/washburnalumni).

## WAKE UP WITH WASHBURN

The Alumni Association and School of Business welcome the final two speakers for the breakfast lecture series on Feb. 19 and April 2. Mark Beffort, bba ’85, CEO of Newmark Grubby Levy Strange Beffort, will speak on Feb. 19, and Priti Lakhani, ba ’91, executive physician at Cerner Corporation, will speak on April 2.

The events begin at 7:30 a.m. at the Bradbury Thompson Alumni Center and are \$10 for members of the Alumni Association and \$13 for non-members. WIBW’s Jim Ogle emcees the lectures.

Register for Wake Up at [GiveToWashburn.org/WakeUp](http://GiveToWashburn.org/WakeUp) or by calling 785.670.1641.

# DEAN, LONGTIME PROFESSOR FINDS ADMINISTRATION A PERFECT FIT

By Ernie W. Webb III • [ernie.webb@washburn.edu](mailto:ernie.webb@washburn.edu)

When Laura Stephenson came to Washburn as a professor in the psychology department, her vision of the future didn't include becoming the dean of the College of Arts and Sciences. In fact, she didn't expect to stay on campus for more than a few years.

"My career here started by happenstance. I came to Kansas to go to the University of Kansas for my graduate degree," said Stephenson, who became the dean of the college in May. "I always intended to be a practicing clinical psychologist at a community mental health center.

"I was finishing up my dissertation and wasn't sure when it was going to be finished. I thought I'd apply for some academic jobs first because they weren't starting until August, and that was far enough in the future that I knew I'd have my dissertation finished. I figured I'd apply for clinical jobs once I had defended my dissertation."

Stephenson, who grew up in Columbia, Missouri, and attended undergraduate school at Goucher College in Maryland, joined the psychology department at Washburn in 1985 and has been a staple at the University for 29 years, working her way up to chairwoman of the department, associate dean of the college, interim dean and now a two-year appointment as dean.

"After reviewing candidates from across the country, it is refreshing to know we are fortunate to have a person here at Washburn with the experience, qualifications and capabilities required for this position," said Jerry Farley, president, Washburn.

After serving as chairwoman of the psychology department for three years, Stephenson was hesitant at first to move into administration.


"I didn't feel like it was a good fit when I chaired the department, so I stepped back to being on the faculty," she



Though she didn't plan on working in higher education, Laura Stephenson has found a niche at Washburn. The longtime Washburn professor and administrator is the dean of the College of Arts and Sciences and has been at the University for nearly 30 years. *Photo by Peggy Clark*

said. "When former dean Gordon McQuere asked me to be an associate dean for the college, I didn't think that I'd be a good fit. But, he was right and moving into the dean's office worked out well for me."

Stephenson settled into her administrative role, relishing the opportunity to work closely with deans and chairpersons from other departments. When McQuere retired in 2013, she served as the interim dean for a year. As the dean, she directs 19 departments in the College of Arts and Sciences.

"I'm really enjoying being the dean because I'm learning so much about the other departments," Stephenson said. "I didn't expect to be at Washburn this long, but I discovered that I loved teaching and I really enjoy working in this environment. It has been rewarding." 

## THREE QUESTIONS

### Q: How do you handle managing 19 departments?

A: I think the answer is you don't do it by yourself. I have good chairs who help me serve them, and I've got an associate dean (Bruce Mactavish) and an assistant dean (Matt Arterburn) who help me a lot. I also have a great administrative staff, which is critical.

### Q: What projects are you working on?

A: One critical project we're working on right now is a strategic plan for the College that complements the University's Vision 2022 plan. Because we're such a large and diverse unit, a strategic plan will help us better understand our common priorities.

### Q: What do you like the most about Washburn?

A: The sense of community among faculty, staff and students. People make connections here with each other. It's a very personal environment. I also love the stimulating environment and commitment to education one finds in academia.



## RECENT GIFT LEADS TO LARGEST ATHLETIC SCHOLARSHIP FUND IN WASHBURN HISTORY

By Kathy Busch • [kbusch@wufoundation.org](mailto:kbusch@wufoundation.org)

The late Dorothy Reichart – pictured with husband Jerry – added \$1.4 million to the Jerry W. Reichart Athletic Scholarship Fund, which she created in her husband's honor. Jerry, ba '50, was a standout athlete at Washburn during his student days.

A lifelong love of sports led to the largest endowed athletic scholarship fund in Washburn's nearly 150-year history. In October, Washburn received an estate gift of more than \$1.4 million from Dorothy Reichart, who passed away on April 9.

This gift was designated to the previously established Jerry W. Reichart Athletic Scholarship Fund, created in memory of Jerry Reichart, ba '50, by his late wife, Dorothy.

"Washburn Athletics was so much a part of Jerry and Dorothy's life," said Nancy Erwin, sister of Dorothy. "Dorothy wanted to honor Jerry through this scholarship fund so future student-athletes could have the same opportunities Jerry had when he was at Washburn.

"Dorothy's gift to Washburn was a beautiful surprise to (husband) Dean and me. We are so impressed with Dorothy's generosity and determination to honor Jerry by providing scholarships for other students. I am so proud of her, and I know this would have been very meaningful to Jerry."

Jerry and Dorothy met while attending Washburn. Jerry was an all-conference lineman and received all-Central Intercollegiate Conference honors in 1949 after helping lead the team to a conference championship under Hall of Fame coach Dick Godlove. He set school and conference records in the shot put and was inducted into the Washburn Athletics Hall of Fame in 1987.

"I remember Jerry as a mountain of a man," said Mark Nordstrom, past president, Ichabod Athletic Fund board of directors. "He was such a great athlete. He was so competitive and a true mentor. As a former Ichabod

athlete, I am so touched Dorothy made this gift to Washburn Athletics in Jerry's name. It is amazing."

After he graduated, Jerry served in the Army and returned to Kansas where he resumed his athletic career, coaching at area high schools. In addition, he officiated in the Big Eight Conference and at NAIA national championships.

"I think Dorothy loved sports as much as Jerry did," Erwin said. "She enjoyed sharing his life as a coach, often sitting on the sidelines and keeping stats on a yellow legal pad."

While at Washburn, Dorothy joined Alpha Phi sorority. She was a member of the First United Methodist Church, the Woman's Department Club, PEO Chapter CS and numerous bridge groups.

"What a tremendous gift the Reichart family will make to Washburn Athletics," said Loren Ferré, director, athletics. "Scholarships are the backbone of our success. Coaches cannot compete for the best student-athletes without scholarship dollars. The incredible generosity of the Reichart family will help future student-athletes fulfill their dreams of competing in the best NCAA Division II Conference in the country, as well as achieve their academic degree."

"We are honored Dorothy chose Washburn as the recipient of this generous estate gift," said JuliAnn Mazachek, president, Washburn University Foundation. "Following her wishes, this gift will be used to provide scholarships for generations of student-athletes to come. This creates a meaningful, lasting legacy to her and Jerry's lives." 🏀



# COURTING EXCELLENCE

Former Washburn tennis player honored with national award by ITA

By Ernie W. Webb III • [ernie.webb@washburn.edu](mailto:ernie.webb@washburn.edu)

**M**oments after Bobby Florence finished his last match as a Washburn tennis player, he headed to the bleachers to support his teammates as they competed in the MIAA tournament.

He felt a great sense of pride watching the Ichabods battle to prolong the season.

“That was one of the most overwhelming moments of my career because I was really proud of my teammates,” he said. “They were fighting to keep our seasons and our tennis careers alive. It was a little sad, but you appreciate everything you’ve gone through over the past four years.”

That attitude and leadership propelled Florence from a freshman battling to earn playing time to a senior squaring off against the top tennis players in the region in Nos. 1 and 2 singles.

Those qualities and his success on the court, including 57 career singles wins and 51 doubles wins, resulted in an honor bestowed upon only a handful of athletes. In May, the International Tennis Association (ITA) announced that Florence was the 2014 National

NCAA Division II ITA/Arthur Ashe Jr. Sportsmanship and Leadership Award recipient.

“I can still remember when Coach told me,” said Florence, a native of Topeka who received bachelor of business administration degrees in finance and management in May. “It was 11 at night, and I was in the library, and he said, ‘Make sure you’re sitting down.’ Then he told me about the national award. I didn’t know what to say. It was such an honor.”

Florence was nominated for the regional award by former coach Dave Alden and became a national finalist when he received the regional honor voted on by coaches. The ITA selected the national award recipient from among eight finalists based on several factors, including academics, leadership, community service and performance on the court.



Above: Along with Washburn President Jerry Farley and Susan Farley, Bobby Florence took in a night at the U.S. Open, including a match by 17-time major winner Roger Federer.

Left: Washburn alumnus and former tennis standout Bobby Florence, second from right, with, from left, Washburn President Jerry Farley, former New York City Mayor David Dinkins, and International Tennis Association President David Benjamin. Florence traveled to New York to receive the Arthur Ashe Jr. Sportsmanship and Leadership Award during a luncheon. He also experienced the city with his family and attended the U.S. Open with President Farley and wife Susan Farley.

## ABOUT BOBBY FLORENCE

**Hometown:** Topeka

**High school:** Washburn Rural

**Degree:** Bachelor of business administration degrees in finance and management

**While at Washburn:** Won 57 singles matches and 51 doubles matches in tennis. Member of Student-Athlete Advisory Council. Volunteered for Rescue Mission and Boys and Girls Club. Studied abroad in China and India.

**Favorite music:** Rock, classic rock and alternative rock

**Favorite movie:** "The Hunger Games"

**Favorite TV show:** "SportsCenter"

**Hobbies:** Tennis, running, biking, water sports

**About Washburn:** "People think of Washburn as a smaller school, but it has limitless opportunities. You could go to a bigger school, but it's just not as personable with the faculty. Washburn is a first-class school, and I enjoyed every minute of it. The professors were amazing."

The ITA released the following statement about Florence: "He has been a standout on and off the court. He is universally respected by his peers and is quietly determined to succeed."

Florence traveled to New York in August, along with Jerry Farley, president, Washburn, and his wife, Susan Farley, and was honored by the ITA during a luncheon. The event featured speeches by David Dinkins, former mayor of New York City, and David Benjamin, the president of the ITA.

"Susan and I were honored to attend the ceremony," Farley said. "Bobby's leadership at Washburn on the tennis team earned him this prestigious honor. We are proud of Bobby for all he did at Washburn. He set the example for what leadership and sportsmanship mean at Washburn."

Florence and his family toured New York City during the trip, and he attended the U.S. Open with the Farleys, giving him a chance to watch arguably the best tennis player of all time in Roger Federer.

"We weren't supposed to see him play, but his match got rained out and pushed back to the night session, so we got to see him play," Florence said. "That was an unbelievable

experience, watching the U.S. Open with them."

Washburn and athletics have been an important part of Florence's life since he began playing tennis as a child. His father, Stacy Florence, received a bachelor of business administration degree in 1979, and his uncles David Lee, bsw '80, and Greg Lee, jd '78, are alumni.

In addition, the arena that houses many of Washburn's athletic programs, Lee Arena, is named after his grandfather, Robert Lee, who received a bachelor of arts degree in 1952, played three sports as an Ichabod and served on the Washburn University Foundation board of trustees from 1994 to 2001.

Bobby Florence said his grandfather, now 88 years old, was a constant presence at his tennis matches.

"I know how much my grandpa loves competitive sports, and that is a big reason I play," he said. "My whole family has been so supportive, and it means a lot to me to go to school here. Coming here just always made sense."

Bobby Florence moved to Florida in October to begin his career in business working as a global technology and operations analyst for Deutsche Bank Prime Brokerage in Jacksonville. 🏏

# BUILDING BLOCKS, BUILDING CAREERS

By Ernie W. Webb III • [ernie.webb@washburn.edu](mailto:ernie.webb@washburn.edu)

“I couldn’t imagine going anywhere else.”

That quote, or a variation of it, was a common thread in the interviews I had with former Washburn football stars in the buildup to the Ichabods’ game at Arrowhead Stadium (ultimately moved to Maryville, Missouri, because of the threat of inclement weather and NFL rules).

Those interviews included a range of former student-athletes from current San Francisco 49ers linebacker Michael Wilhoite to certified financial planner Eric Taylor, an all-conference defensive lineman in the early 2000s.

“I had several options my senior year of high school, but B.D. Kennedy (then the offensive line coach at Washburn) and my dad kept talking to me about ‘being a big fish in a small pond,’” Taylor said. “In the end, football was the sport I loved, so I went to Washburn. I’ve never regretted it. It was just right for me.”

Taylor arrived in Topeka at the end of the Tony DeMeo era and beginning of longtime coach Craig Schurig’s tenure. That the program has blossomed under Schurig does not come as a surprise to the 2003 alumnus.

“Coach Schurig works hard, and his teams work hard,” he said. “It really gives you a sense of pride to see the program grow like it has.”


Hard work was another common thread in the interviews. It’s one of the key elements in Wilhoite’s rise from the practice squad to starting linebacker on one of the best defenses in the NFL.

“One of the biggest things I learned at Washburn is that nothing is given to you, you take nothing for granted,” Wilhoite said. “You are not guaranteed your

spot, and you better be prepared to put in the time to keep your job. That was the case with Coach Schurig, and it’s the case in the NFL.”

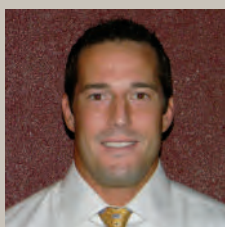
Joe Hastings is no stranger to putting in the time. Another example of the power of dedication, he climbed from virtual anonymity as an injury-riddled receiver to one of the best players in small college football by his senior year. By 2011, he was lining up wide in the last game of the regular season for the 49ers.

Three years later, the Wichita native is continuing his NFL dream as a pro personnel coordinator for the Philadelphia Eagles. It’s a job that demands countless hours in the office studying film, among dozens of other duties.

“What I took from Washburn, as an athlete and as a student, was just how hard I was going to have to work to make my dream come true,” Hastings said. “Washburn was the foundation of everything for me. Coach (Craig) Schurig gave me a chance, and that’s all I needed. The preparation I did there, the University, the people, all of that was a huge building block.” 



Ernie W. Webb III is the media relations specialist for the Washburn University Alumni Association and the editor of *The Ichabod*. He received a bachelor of arts in mass media with an emphasis in writing from Washburn in 1998. Contact Webb at 785.670.2303 or [ernie.webb@washburn.edu](mailto:ernie.webb@washburn.edu).



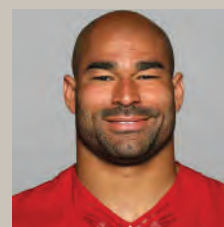
## ERIC TAYLOR

Former all-conference defensive lineman played arena football before becoming a certified financial planner in the Kansas City area.



## JOE HASTINGS

Former All-American played for 49ers in 2011, retired after signing with Dolphins in 2013. Now a pro personnel coordinator with Eagles.



## MICHAEL WILHOITE

Starting linebacker for 49ers who ranks among the team leaders in tackles. Played in Super Bowl in 2013.

# MEN'S BASKETBALL

DATE	OPPONENT	TIME
Saturday, Jan. 3	MISSOURI WESTERN STATE UNIVERSITY	7:00 p.m.
Monday, Jan. 5	UNIVERSITY OF CENTRAL MISSOURI	7:30 p.m.
Saturday, Jan. 10	at Northwest Missouri State University, Maryville	3:30 p.m.
Saturday, Jan. 17	at Pittsburg State University, Pittsburg, Kansas	3:30 p.m.
Thursday, Jan. 22	at University of Central Oklahoma, Edmond	7:30 p.m.
Saturday, Jan. 24	at Northeastern State University, Talequah	3:30 p.m.
Thursday, Jan. 29	UNIVERSITY OF NEBRASKA-KEARNEY	7:30 p.m.
Saturday, Jan. 31	FORT HAYS STATE UNIVERSITY	7:00 p.m.
Wednesday, Feb. 4	at Emporia State University	7:30 p.m.
Saturday, Feb. 7	at University of Nebraska-Kearney	7:30 p.m.
Thursday, Feb. 12	UNIVERSITY OF CENTRAL OKLAHOMA	7:30 p.m.
Saturday, Feb. 14	NORTHEASTERN OKLAHOMA STATE	7:00 p.m.
Wednesday, Feb. 18	at Fort Hays State University	7:30 p.m.
Saturday, Feb. 21	EMPORIA STATE UNIVERSITY	7:00 p.m.
Saturday, Feb. 28	PITTSBURG STATE UNIVERSITY	7:00 p.m.

Home games in all caps; All Games are MIAA Conference games.

# WOMEN'S BASKETBALL

DATE	OPPONENT	TIME
Saturday, Jan. 3	MISSOURI WESTERN STATE UNIVERSITY	5:00 p.m.
Monday, Jan. 5	UNIVERSITY OF CENTRAL MISSOURI	5:30 p.m.
Saturday, Jan. 10	at Northwest Missouri State University, Maryville	1:30 p.m.
Saturday, Jan. 17	at Pittsburg State University, Pittsburg, Kansas	1:30 p.m.
Thursday, Jan. 22	at University of Central Oklahoma, Edmond	5:30 p.m.
Saturday, Jan. 24	at Northeastern State University, Talequah	1:30 p.m.
Thursday, Jan. 29	UNIVERSITY OF NEBRASKA-KEARNEY	5:30 p.m.
Saturday, Jan. 31	FORT HAYS STATE UNIVERSITY	5:00 p.m.
Wednesday, Feb. 4	at Emporia State University	5:30 p.m.
Saturday, Feb. 7	at University of Nebraska-Kearney	5:30 p.m.
Thursday, Feb. 12	UNIVERSITY OF CENTRAL OKLAHOMA	5:30 p.m.
Saturday, Feb. 14	NORTHEASTERN OKLAHOMA STATE	5:00 p.m.
Wednesday, Feb. 18	at Fort Hays State University	5:30 p.m.
Saturday, Feb. 21	EMPORIA STATE UNIVERSITY	5:00 p.m.
Saturday, Feb. 28	PITTSBURG STATE UNIVERSITY	5:00 p.m.

Home games in all caps; All Games are MIAA Conference games.

# SOFTBALL

The Mid-America Intercollegiate Athletic Association had not completed the 2015 softball schedule at press time. To view schedules for the IChabods, visit [wusports.com](http://wusports.com).

# GOLF

DATE	OPPONENT	TIME
Monday, March 9-Tuesday, March 10	at David Falconer Memorial Golf Tournament, Danville, Arkansas	All day
Monday, March 23-Tuesday, March 24	at University of Central Oklahoma Invitational, Oklahoma City, Oklahoma	All day
Sunday, March 29-Tuesday, March 31	at Tennessee River Rumble Intercollegiate Tournament, Loudon, Tennessee	All day
Monday, April 6-Tuesday, April 7	at Lindenwood Invitational, St. Charles, Missouri	All day
Monday, April 13-Tuesday, April 14	Washburn Invitational, Topeka	All day
Monday, April 20-Wednesday, April 22	MIAA Championship, Lawrence, Kansas	All day

# BASEBALL

DATE	OPPONENT	TIME
Thursday, Feb. 12	BEMIDJI STATE	2:30 p.m.
Friday, Feb. 13	BEMIDJI STATE	2:30 p.m.
Saturday, Feb. 14	UNIVERSITY OF MINNESOTA, CROOKSTON (DH)	Noon
Friday, Feb. 20	*SOUTHWEST BAPTIST	2 p.m.
Saturday, Feb. 21	*SOUTHWEST BAPTIST (DH)	1 p.m.
Sunday, Feb. 22	*SOUTHWEST BAPTIST	1 p.m.
Friday, Feb. 27	*at Fort Hays State	2 p.m.
Saturday, Feb. 28	*at Fort Hays State (DH)	1 p.m.
Sunday, March 1	*at Fort Hays State	Noon
Tuesday, March 3	*at Newman University, Wichita, Kansas	3 p.m.
Friday, March 6	*PITTSBURG STATE	4 p.m.
Saturday, March 7	*PITTSBURG STATE (DH)	1 p.m.
Sunday, March 8	*PITTSBURG STATE	1 p.m.
Tuesday, March 10	ROCKHURST UNIVERSITY	3 p.m.
Friday, March 13	*at Emporia State	6 p.m.
Saturday, March 14	*EMPORIA STATE (DH)	2 p.m.
Sunday, March 15	*at Emporia State	1 p.m.
Friday, March 20	*MISSOURI WESTERN STATE	5 p.m.
Saturday, March 21	*MISSOURI WESTERN STATE (DH)	2 p.m.
Sunday, March 22	*MISSOURI WESTERN STATE	1 p.m.
Friday, March 27	*at Lindenwood University, St. Charles, Missouri	4 p.m.
Saturday, March 28	*at Lindenwood University, St. Charles, Missouri (DH)	1 p.m.
Sunday, March 29	*at Lindenwood University, St. Charles, Missouri	Noon
Tuesday, March 31	NEWMAN UNIVERSITY	5 p.m.
Thursday, April 2	*at Missouri Southern State, Joplin	6 p.m.
Friday, April 3	*at Missouri Southern State, Joplin (DH)	1 p.m.
Saturday, April 4	*at Missouri Southern State, Joplin	Noon
Tuesday, April 7	at Emporia State	6 p.m.
Friday, April 10	*UNIVERSITY OF CENTRAL MISSOURI	5 p.m.
Saturday, April 11	*UNIVERSITY OF CENTRAL MISSOURI (DH)	1 p.m.
Sunday, April 12	*UNIVERSITY OF CENTRAL MISSOURI	1 p.m.
Tuesday, April 14	*EMPORIA STATE	6 p.m.
Friday, April 17	*at Northwest Missouri State, Maryville	3 p.m.
Saturday, April 18	*at Northwest Missouri State, Maryville (DH)	1 p.m.
Sunday, April 19	*at Northwest Missouri State, Maryville	Noon
Friday, April 24	*UNIVERSITY OF NEBRASKA-KEARNEY	5 p.m.
Saturday, April 25	*UNIVERSITY OF NEBRASKA-KEARNEY (DH)	1 p.m.
Sunday, April 26	*UNIVERSITY OF NEBRASKA-KEARNEY	Noon

Home games in all caps; \*MIAA Conference game.

MILWAUKEE ART MUSEUM

# CLASS NOTES

Submit your news online at [washburn.edu/alumni-notes](http://washburn.edu/alumni-notes), post it on Facebook at [Facebook.com/washburnalumni](https://www.facebook.com/washburnalumni), or email [wualumni@washburn.edu](mailto:wualumni@washburn.edu). The deadline for the spring/summer 2015 edition of the magazine is Jan. 18. You can read more class notes on Facebook at [Facebook.com/washburnalumni](https://www.facebook.com/washburnalumni) and Twitter at [Twitter.com/washburnalumni](https://twitter.com/washburnalumni).

## 1950S

**Marilyn "Joan" (Pauley) Diehl**, ba '56, Madison, Alabama, wrote a children's book, "Little Hal," published in June. She is a retired newspaper editor and a member of Zeta Tau Alpha. During college, she was a member of Pi Gamma Mu, Who's Who Among Students at American Universities and Colleges, Young Republicans and the Washburn Review staff.

## 1960S

**Thomas Goulding**, bs '67, Southfield, Michigan, is chairman and associate professor in the Department of Mathematics and Computer Science at Lawrence Technological University.

**Thomas Wright**, jd '64, ba '81, Topeka, is of counsel at the Law Offices of Morris Laing Evans Brock and Kennedy Chtd. He is a former adjunct professor at the Washburn University School of Law and a former member of the Washburn University Board of Regents.

## 1970S

**Frank Benge**, ba '76, Austin, Texas, is a theatre director,

designer, writer and performer.

**C.J. Hamilton**, b ed '73, m ed '84, Silver Lake, Kansas, was inducted into the Topeka Shawnee County Sports Council Hall of Fame. He is the football coach at Silver Lake High School and the winningest coach in state history with 370 victories, including eight state championships. Hamilton played football and baseball at Washburn.

**Patrik Neustrom**, jd '76, Salina, Kansas, was elected president of the Kansas Association for Justice. He is an attorney at Neustrom and Associates. Neustrom was a member of Phi Delta Phi and an intern at the Law Clinic at Washburn.

**David Rebein**, ba '77, Dodge City, Kansas, was elected treasurer and Eagles chairman of the Kansas Association for Justice. He is a partner in Rebein Bangerter Rebein PA. Rebein was a member of Phi Kappa Phi at Washburn.

**Jack Swartz**, bba '73, ba '74, Phoenix, Arizona, completed his term as grand knight of the St. Paul's Knights of Columbus in June. His council received the best vocations program award from the state council.

**Jeffery Whitham**, jd '79, Garden City, Kansas, was appointed to

the Kansas State Banking Board by Gov. Sam Brownback. He is the president and chairman of Western State Bank in Garden City and was a member of Phi Delta Phi at Washburn.

**Jerel Wright**, bba '79, jd '83, Meriden, Kansas, was appointed as administrator of the Kansas Department of Credit Unions by Gov. Sam Brownback. He works for the Kansas Credit Union Association.

## 1980S

**Greg Brenneman**, bba '84, Spring, Texas, was appointed to the board of directors for Baker Hughes Inc. He is the chairman of CCMP Capital Advisors LLC. Brenneman is a Washburn University Foundation trustee and received an honorary doctor of commerce degree from the University in 1999. He is a member of Alpha Delta and was a member of the Accounting Society, Phi Kappa Phi, Student Council and Sagamore.

**Natalie Camacho Mendoza**, jd '89, Boise, Idaho, is the chairwoman of the dean's advisory council for the Concordia School of Law and a member of the school's Council of Trustees.

**Michael Galloway**, jd '82,

Paradise Valley, Arizona, is a shareholder at the firm Gallagher and Kennedy.

**William Greiner**, bba '80, Lenexa, Kansas, is the chief investment officer at Mariner Wealth Advisors and a contributor for Forbes magazine. He is a Washburn University Foundation trustee and director and was a member of Phi Kappa Phi, the marching band and Phi Delta Theta.

**Laura Ice**, jd '84, Wichita, Kansas, received the Howard C. Kline Distinguished Service Award from the Wichita Bar Association. She is deputy general counsel at Textron Financial Corp. Ice is a Washburn University Foundation trustee.

**Tim Laird**, ba '87, Melbourne, Florida, was elected medical staff president at Viera Hospital in Viera, Florida. He is the regional medical director for Health First Medical Group. Laird was a member of the Chemistry Club and Sagamore at Washburn and was a member of the board of directors for the Alumni Association.

**Curt Landis**, bba '80, Thiensville, Wisconsin, is the administrative director of decision support for Wheaton Franciscan Healthcare. He was a member of

*\*Alumni Association members are highlighted in blue.*

Class Notes 42

the Accounting Society, Sagamore and Delta Sigma Psi.

**Valerie Mardle**, ba '85, Orlando, Florida, is an annual giving officer for Devereux. She has been working for nonprofit organizations for 30 years.

**Greg Meredith**, jd '86, Hutchinson, Kansas, is the vice president of compliance and ethics for the Hutchinson Regional Healthcare System. He was a member of Delta Theta Phi at Washburn.

**Kent Nichols**, ba '86, Topeka, is the copy chief for the Topeka Capital-Journal. He has worked as a copy editor at the Las Vegas Review-Journal and news editor at the Tallahassee Democrat. Nichols was on the Washburn Review staff.

**Debra Villarreal**, bba '82, Dallas, Texas, was recognized in the publication "The Best Lawyers in America." She is an attorney at Thompson and Knight and was a member of the Accounting Society at Washburn.

**Roger Warren**, jd '88, Olathe, Kansas, is a member of alternative dispute resolution web portals mediation.com and arbitration.com.

## 1990s

**Tina (Eddy) Anderson**, bba '96, Daphne, Alabama, was appointed vice president of retail banking operations with Capitol Federal. She also received the company's John C. Dicus Leadership Award and has worked for Capitol Federal since 1995.

**David Callanan**, bba '98, Topeka, was named to the "20 Under 40" list by Jayhawk Area Council of the Boy Scouts. He is the founder of Advisors Excel and was a member of Sigma Phi Epsilon at Washburn.

**Lynn Fountain**, mba '92, Overland Park, Kansas, is a chief audit executive specializing in consulting and training. She previously worked at Black & Veatch and Aquila Inc. as an executive.

**Karin (Warack) Heusted**, bsn '92, Bothell, Washington, is a nurse practitioner at Northwest Weight Loss Surgery.

**Greg Hill**, jd '99, Greenwood Village, Colorado, is the executive director of the Colorado Dental Association. He was a member of the Environmental Law Society at Washburn.

**Jess Hoeme**, ba '99, Cheney, Kansas, was named chairman of the criminal practice committee for the Wichita Bar Association. He is an attorney at Joseph, Hollander and Craft LLC and is a member of Sigma Phi Epsilon.

**Clark Hudson**, jd '90, Jamul, California, received the Victoria J. Sterling 2014 Lawyer of the Year award from Oral and Maxillofacial Surgeons National Insurance Company and Fortress.

**Kirk Hulett**, ba '92, Omaha, Nebraska, is the executive vice president of strategy and practice management at Securities America. He also works as an adjunct instructor in the University of Nebraska at Omaha

College of Business.

**Jim McLean**, ba '95, Topeka, is the executive editor of KHI News Service.

**Jack Morgan**, jd '97, Fort Myers, Florida, is an attorney at the law firm Roetzel. He was a member of Phi Delta Phi, Environmental Law Society and Moot Court Council and an intern in the Law Clinic at Washburn.

**John Morgan**, mba '94, Elgin, Texas, is the varsity boys basketball coach at Elgin High School.

**Clint Westhoff**, jd '97, Plano, Texas, is a partner at the law firm GoransonBain PLLC.

## 2000s

**Barbara (Volk) Bedwell**, ba '07, Plano, Texas, is a disability processing specialist at the Social Security Administration. She is a member of Nonoso.

**Cara Burnidge**, ba '06, Cedar Falls, Iowa, is an assistant professor of religion at the University of Northern Iowa in Cedar Falls, Iowa. She was a member of the Leadership Institute and is a member of Nonoso.

**Laura Castillo**, jd '04, Hobbs, New Mexico, was appointed to the Fifth Judicial Court in New Mexico by Gov. Susana Martinez.

**Gary Crook**, bs '08, Burlingame, Kansas, is the technology coordinator for the Lyndon Unified School District.

**Danelle Groth**, bfa '07, Satanta, Kansas, is a photographer. She worked on the Washburn Review

staff.

**Lindsee Hastings**, bsw '06, Broomfield, Colorado, is a caseworker for Jefferson County in Golden, Colorado.

**Brian Haug**, bba '09, Topeka, was named to the "20 Under 40" list by Jayhawk Area Council of the Boy Scouts. He is an account executive at WIBW-TV. Haug was a member of the College Entrepreneurs Organization, Campus Activities Board, Bod Squad, the International Business Club, Phi Beta Lambda and Washburn Student Government Association.

**Amanda Kiefer**, jd '03, Topeka, was named to the "20 Under 40" list by Jayhawk Area Council of the Boy Scouts. She works for Federal Home Loan Bank.

**Katie (Moore) McWilliams**, bs '07, Ellsworth, Kansas, completed her residency at the University of Kansas School of Medicine-Wichita Family Medicine Residency Program at Smoky Hill in Salina and is working as a physician.

**Tommy Mangino**, ba '08, Ames, Iowa, is the wide receiver coach at Iowa State University. He played football and baseball at Washburn.

**Jeffrey Martens**, ba '03, Topeka, is a music teacher at Lyndon Unified School District. He was a member of Who's Who Among Students at American Universities and Colleges.

**Jacob Mauslein**, ba '07, Stillwater, Oklahoma, received his doctor of philosophy in security studies from Kansas

State University. He is a visiting assistant professor of political science at Oklahoma State University.

**Courtney Mikesic**, jd '05, Kansas City, Kansas, is a managing attorney at Kramer and Frank. She was an intern in the Law Clinic at Washburn.

**Hattie Mitchell**, bba '07, Topeka, was named to the "20 Under 40" list by Jayhawk Area Council of the Boy Scouts. She works for Prairie Band Potawatomi Nation.

**Jessica Niederee**, bs '08, Winfield, Kansas, received a doctor of dental medicine degree at the College of Dental Medicine-Arizona of Midwestern University. She is a member of Zeta Tau Alpha and was a member of the Leadership Institute, Prehealth Professionals Club and Beta Beta Beta.

**Liana Onnen**, ba '09, Topeka, was elected chairwoman of the tribal council for Potawatomi Nation. She has worked as the general manager of tribal operations, director of housing and resources and in human resources. Onnen was a member of Sigma Tau Delta at Washburn.

**Buck Reuter**, bba '00, mba '02, Tecumseh, Kansas, was named to the "20 Under 40" list by Jayhawk Area Council of the Boy Scouts. He works at Westar Energy.

**Nathan Schmidt**, bs '02, Topeka, was named to the "20 Under 40" list by Jayhawk Area Council of the Boy Scouts. He works for the Kansas Department of Revenue and is a member of the Topeka City Council. Schmidt played

football at Washburn.

## BIRTHS

**Billie Jean (Bergmann)**

**Graham**, bba '09, Topeka, and Bobby Graham, a girl, Raelyn Lee, on June 25. Billie Jean is an assistant manager at Burlington Northern Santa Fe Railway. She was a member of Washburn Student Government Association, Phi Kappa Phi, Campus Activities Board, Quoffee Twak Book Club and Beta Alpha Psi at Washburn. Graham is a member of the Alumni Association board of directors.

## 2010S

**Samantha (Mason) Benoit**,

aa '14, Topeka, is a legal secretary at Foulston Siefkin LLP.

**Sarah Burns**, ba '12, is a client service associate at Stifel Nicolaus and teaches private music lessons. She was a member of the Keyboard Society and Music Theory Club at Washburn.

**Cody Claassen**, jd '10, Topeka, is an attorney at DeVaughn James Injury Lawyers. He was a member of Family Law Quarterly at Washburn.

**Cate Coley**, ba '14, Topeka, is the promotions director for Country Legends 106.9 FM in Topeka.

**Clint DeVoe**, bba '12, Topeka, was appointed vice president of retail banking operations with Capitol Federal. He has worked at Capitol Federal since 2008 as a customer service representative, assistant branch manager, retail banking manager and deposit services manager.

**Adam Gerstner**, bba '10, Great Bend, Kansas, is a commercial claims representative with Nationwide Insurance.

**Barbara Hack**, bas '14, Topeka, is a firefighter for the City of Topeka.

**Megan Hicks**, b ed '14, Topeka, is a second-grade teacher at Lowman Hill Elementary School.

**Derek Huff**, ba '12, Lawrence, Kansas, works at Entercom Communications in Kansas City. He was a member of Student Film and Video and Bod Squad at Washburn.

**Brett Johnson**, aa '14, ba '14, Topeka, is an exercise specialist at Rebound Physical Therapy.

**Katrina Klein**, certificate in legal office professional, Topeka, is an administrative assistant at Washburn Institute of Technology.

**Michael McDiffett**, as '13, certificate in magnetic resonance '14, Manhattan, Kansas, is a computed tomography technologist for Northeast Kansas Facial Plastic ENT and Pulmonology.

**John Newman**, certificate in welding '14, Berryton, Kansas, works at Goodyear.

**Alex Olson**, bfa '14, Topeka, is the assistant gallery director at SouthWind Art Gallery in Topeka.

**Cameron Owens**, bis '14, Lawrence, Kansas, is a real estate coordinator for Douglas County.

**Patrick Salyer**, mba '14, jd '14, Salina, Kansas, is an associate at Kennedy and Coe.

**Jara Settles**, jd '14, Kansas City,

Missouri, is an attorney at Shook, Hardy and Bacon LLP.

**Linda Wright**, bsw '14, Manhattan, Kansas, is an administrative assistant at Kansas State Bank.

## WEDDINGS

**Rachel King**, msw '14, Merriam, Kansas, and **Michael McSpadden**, bas '12. She is a social worker at Children's Mercy Hospital.

**Erin Correll**, bsn '11, Lawrence, Kansas, and **Brandon Correll**, bba '11, on July 14. She is a registered nurse at Children's Mercy in Kansas City, Missouri, and he works at Westar Energy.

**Rebecca Schmidt**, bs '10, East Wenatchee, Washington, and Dennis Jeffris on Aug. 16. She is a graduate research assistant at Washington State University.

## BIRTHS

**Ron Gudenkauf**, bs '14, Topeka, and Holly Gudenkauf, a boy, Isaac Paul Gudenkauf, on June 6.

**Elise Wiseman**, bsn '11, Topeka, and Blake Wiseman, a girl, Elliette Rose, on July 22. Elise is a registered nurse at Stormont-Vail and was a member of the Dancing Blues at Washburn.

## FRIENDS

**Janet Thompson Jackson**, Overland Park, Kansas, a professor at the Washburn University School of Law, is the host of the PBS television show "I've Got Issues," which was listed as one of Topeka's Top Ten Treasures by Topeka Magazine.



# IN MEMORY

## 1930S

### **Phyllis (Boyd) Boyer,**

ba '36, 99, Omaha, Nebraska, on June 28. She worked for Southwestern Bell and taught humanities at the University of Nebraska-Omaha. Boyer was a member of Kappa Alpha Theta and Pi Gamma Mu.

### **Virginia (Rehkopf) Feeley,**

ba '36, 103, Topeka, on Sept. 9. She worked at the Menninger Foundation and in the juvenile courts system.

**George S. Reynolds,** ba '39, jd '42, 95, Wichita, Kansas, on June 15. He served in the Army during World War II, achieving the rank of master sergeant and receiving the Philippine Liberation Ribbon, Bronze Star, Asiatic Pacific Campaign Medal and World War II Victory Medal. Reynolds was Greenwood County attorney and a judge in the 13th Judicial District. Survivors include son **Zackery Reynolds,** jd '82, Fort Scott, Kansas.

### **Barbara (King) Wilson,**

ba '38, 97, Manhattan, Kansas, on June 28. She worked at Santa Fe Railway and was an English teacher before co-owning the firm Charlson and Wilson with late husband Bob. Wilson was a member of Kappa Alpha Theta, Nonoso and Quill Club. She served on the Alumni Association board of

directors and was a Washburn University Foundation trustee emeritus. Wilson also received an honorary doctor of humane letters from Washburn in 1996. Survivors include daughter **Nancy (Wilson) Wight,** b ed '69, m ed '73, Matfield Green, Kansas, and son **Thomas Wilson,** bs '72, Salina, Kansas.

## 1940S

### **Carolyn Cohen,** ba '49, 87,

Lenexa, Kansas, on Aug. 12. She was a social worker at High Plains Mental Health Center in Hays, Kansas. She was a member of Alpha Phi and Nonoso.

**Ralph Foster,** ba '49, jd '50, 86, Wichita, Kansas, on Aug. 15. He served in the Army during the Korean Conflict before a long career as an attorney. Foster was the vice president and general counsel at Kansas Gas and Electric for 20 years before retiring. He was a Washburn University Foundation trustee emeritus.

### **Alfred Holl,** jd '49, 93,

Oklahoma City, Oklahoma, on July 17. He served in the Army Air Corps as a navigator during World War II, receiving the Air Medal with five clusters and European Theater Ribbon with four battle stars. Holl retired from the Air Force Reserve as a lieutenant colonel before working as assistant Kansas Supreme Court reporter and

as general attorney for Cities Service Oil Co. He was a member of Delta Theta Phi at Washburn.

**Irving Johnson,** ba '48, 89, Sanibel, Florida, on July 10. He was an officer in the Navy during World War II before working as a scientist in the pharmaceutical industry for 35 years. Johnson was vice president for Eli Lilly and Company and was an independent biomedical research consultant for 20 years.

**Eugene Lane,** ba '43, 93, Topeka, on July 26. He served in the Navy during World War II and attended officer school at Harvard University. Lane owned and operated Lane's Grocery in downtown Topeka. He was a member of Sagamore and the football and basketball teams at Washburn.

**Clyde Milligan,** jd '49, 94, Littleton, Colorado, on May 4. He served on the aircraft carrier USS Wasp during World War II before working as an FBI agent in New York. Milligan later worked as legal counsel for Colorado Oil Company, Colorado Interstate and Gas, and Kinder Morgan. He was a member of Delta Theta Phi.

**Claude Rice Jr.,** ba '40, jd '42, 97, Stilwell, Kansas, on Sept. 2. He served in the Air Force during World War II and practiced law in Kansas City, Kansas. During the Korean Conflict, Rice was a legal

officer for the Department of Defense. He founded Electronic Processing Inc. and was a leading member of the National Association of Chapter XIII Trustees.

**William Stahl,** ba '49, jd '50, 89, Junction City, Kansas, on Sept. 15. He served in the Army during World War II and was a prisoner of war for five months in Germany. Stahl was awarded the Purple Heart. He practiced law for 60 years, including a term as Geary County attorney. Stahl was a member of Delta Theta Phi. Survivors include grandson **Kevin Mechtley,** jd '09, Shawnee, Kansas.

## 1950S

**Kay (Krehbiel) Arvin,** jd '51, 92, Wichita, Kansas, on June 29. She was the first female lawyer to argue a case before the Kansas Supreme Court and later served as a district court judge.

**Thomas Boone,** jd '56, 87, Hays, Kansas, on Aug. 25. He served in the Navy and was an attorney in Hays for nearly 60 years. Boone also was a city commissioner in Hays and a member of the Ellis County, Kansas and American Bar Associations. He was a member of Delta Theta Phi. Survivors include son **Thomas Boone,** ba '79, Hays, and nephews **Mordecai Boone,** jd '93, San

\*Alumni Association members are highlighted in blue.

Francisco, California, **Squire Boone**, jd '95, Kansas City, Missouri, and **Cline Boone**, jd '96, Shawnee, Kansas.

**Eldon Brumbaugh**, ba '53, 85, Dallas, Texas, on June 27. He served in the Army National Guard before working as a salesman at Waukeshia Pearce Industries. Brumbaugh was a member of Kappa Sigma, Sagamore, Who's Who Among Students at American Universities and Colleges and the football, track and basketball teams.

**Owen Henson**, ba '50, 87, Topeka, on July 2. He served in the Navy before a long career in education. Henson was a teacher, director of instruction, assistant superintendent, principal, associate superintendent and deputy superintendent in Topeka, as well as an adjunct instructor at the University of Kansas and professor and associate chairman of education administration at Emporia State University. Survivors include son **Scott Henson**, b ed '79, Meriden, Kansas, and daughter **Christi Henson**, ba '74, Tollhouse, California.

**Thomas Kennedy**, ba '56, 94, Topeka, on Sept. 3. He was brigadier general of the Kansas National Guard. Kennedy served in World War II and was awarded the Legion of Merit with Oak Leaf Cluster, Bronze Star, Army Commendation Medal with two Oak Leaf Clusters, European-African-

Middle East Campaign Medal, World War II Victory Medal and French National Order of the Legion of Honor Medal. He worked at Topeka Whole Grocery Co. and was the director of Alcoholic Beverage Control for the State of Kansas. Survivors include son **Michael Kennedy**, ba '79, Locust Grove, Georgia.

**Virginia Marshall**, ba '50, 85, Topeka, on June 16. She worked at Stormont-Vail HealthCare and was a laboratory technician at Larned State Hospital and in Topeka. Marshall was a member of Zeta Tau Alpha and Nonoso. Survivors include daughter **Laurie (Marshall) Heng**, aa '87, Wichita, Kansas.

**Donald Mathers**, bba '54, 82, Topeka, on Aug. 26. He served in the Air Force for 24 years before working as a yearbook salesman at Jostens. Mathers was a member of the Air Force ROTC at Washburn.

**Roland Reed**, bba '57, 90, Olathe, Kansas, on Aug. 13. He was a fighter pilot during World War II and worked at Santa Fe Railway for 41 years in the accounting department.

**Don Stroud**, ba '55, 80, Tucson, Arizona, on June 23. He was a teacher in the Shawnee Heights School District in Topeka and worked for the Tucson Parks and Recreation Department. Stroud was a member of the Air Force ROTC and the football and track teams. Survivors include wife **Mary (Tuttle) Stroud**, b ed '66, Tucson.

**Walter Scott**, bba '53, jd '58, 83, Topeka, on Aug. 9. He was an officer in the Air Force and owned a private practice in Topeka. Scott was a member of the Kansas Bar Association for 50 years and was president of the Topeka Bar Association. While at Washburn, he was a member of Alpha Delta, Air Force ROTC and Delta Theta Phi. Survivors include daughters **Carol (Scott) Steves**, bsw '93, Topeka, and **Susan (Scott) Jones**, ba '81, Billings, Montana; son-in-law **Mark Anderson**, ba '75, Monument, Colorado; and niece **Kathryn Kimbrough**, ba '03, Topeka.

**Merald Tice**, bba '55, 80, Tonganoxie, Kansas, on April 9. He was an insurance agent at Laming-Tice Insurance. Tice was a member of the Air Force ROTC and Independent Student Association at Washburn.

**Raymond Vaught**, bba '52, 88, Topeka, on Aug. 26. He served in the Navy during World War II and later in the Air Force Reserves. Vaught worked as a certified public accountant and was owner of the firm Yaden and Vaught. He was a member of the Arnold Air Society and Association of Business Students. Survivors include son **Ronald Vaught**, ba '75, Portland, Oregon.

**Marcia (Tomlinson) Works**, b ed '51, 85, Topeka, on Aug. 8. She was a kindergarten teacher and worked at H&R Block for more than 30 years. Works was

a member of Alpha Phi, Young Republicans and the pep club while at Washburn. Survivors include husband **Charles Works**, ba '53, jd '53, Topeka; daughter **Elizabeth (Works) Currier**, b ed '77, Topeka; and sons **Matthew Works**, ba '79, jd '82, Topeka, and **Mark Works**, ba '85, jd '88, Topeka.

## 1960s

**John Conway**, jd '63, 79, Albuquerque, New Mexico, on June 1. He was an attorney, state senator and federal judge after serving in the Air Force. While at Washburn, Conway was the editor-in-chief of the Law Journal and graduated magna cum laude.

**Jo Ann (Rutherford) Ely**, ba '67, 88, Topeka, on Sept. 14. Survivors include daughter **Barbara (Ely) Heptig**, bs '75, jd '78, and son-in-law **Rodney Heptig**, bba '75, both of Fort Worth, Texas.

**Clayton Hunter**, ba '65, jd '68, 71, Wichita, Kansas, on June 14. He was an attorney and district director of the Small Business Administration.

**Pauline (Worland) Knowles**, ba '65, 93, Topeka, on June 29. Survivors include nephew **Greg Startz**, ba '89, aas '10, Topeka.

**Marvin Maydew**, bba '66, jd '69, 88, Topeka, on July 7. He was an accountant at John Morrell and Co. and established his firm in 1956. After retiring as an accountant in 1992, he practiced law and



Janet Nuzman, far left, with members of Washburn's volleyball team in 1981.

# IN MEMORY

**JANET NUZMAN**, PROFESSOR OF PHYSICAL EDUCATION, LONGTIME COACH, 82, SILVER LAKE, KANSAS, ON AUG. 28

Born in Nebraska City, Nebraska, Janet Nuzman was a pioneer at Washburn, serving as the University's first coach in several women's sports, including basketball, volleyball, softball, gymnastics and field hockey.

Nuzman, who received a degree in physical education from Kansas State University and a master's degree from the University of Kansas, was a professor of physical education at Washburn for more than 30 years, from the early 1960s to the mid-1990s.

Nuzman began her career in education as a physical education substitute teacher at Topeka High, her alma mater, in 1957 before teaching at Highland Park for four years and Seaman High School for a year.

A member of the Alumni Association, she attended Washburn and served as a trustee for the Washburn University Foundation. Nuzman also was a member of Nonoso and a Foundation trustee emeritus.

She was inducted into the Washburn University Athletics Hall of Fame in 1988 and the Highland Park Teachers Hall of Fame in 1995. Her service to the community included several volunteer committees at Washburn, the Zonta Club of Topeka, Delta Theta Chi, Heartland Branch Huntington's Disease Foundation and Shawnee Girl Scout Jamboree.

Nuzman is survived by husband Carl Nuzman, of the home, and brother Louis Steck, ba '53, Fresno, California.

was an adjunct instructor at the Washburn School of Law.

**Marilyn (Levett) Morford**, ba '68, 75, Corpus Christi, Texas, on July 4. Survivors include son **Thomas Morford**, bba '99, Topeka.

**Annette (Fluke) Nelson**, ba '62,

74, Topeka, on June 14. She was a member of Delta Gamma.

**Richard Passman**, bba '64, 76, Woodbury, Minnesota, on Sept. 15. He was an accountant and retired as division director of Eco Water Company. Survivors include niece **Jane (Evans)**

**Burroughs**, ba '99, Topeka.

**Don Snoddy**, ba '69, 66, Omaha, Nebraska, on Sept. 12. He was a state archivist at the Nebraska State Historical Society and manager of museum services at the Union Pacific Railroad. Snoddy also

worked at the Douglas County Historical Society. He was a member of Young Republicans and the Student Union Association. Survivors include cousins **Philip Lyon**, ba '58, Wixom, Michigan, **Carol (Lyon) Vogel**, ba '67, Waukeez,

*\*Alumni Association members are highlighted in blue.*



Iowa, **Barbara Johnson**, ba '51, Fullerton, California, and **Sarah Reser**, Topeka, b ed '69. **John Tarlton**, bfa '68, 78, Topeka, on Aug. 11. He was an activities therapist and psychotherapist at the Menninger Foundation for nearly 40 years. His work, "Sculpture Common Justice," is on display at the School of Law. **Bette (Barton) Watson**, ba '68, 85, Topeka, on July 30. She was a nurse at the Topeka VA Medical Center, Stormont-Vail HealthCare, St. Francis Health and Kaw Area Technical School. Watson also worked as an instructor at Washburn. **Gary Weinkauf**, ba '61, m ed '66, 77, Topeka, on July 28. He was a teacher at Tecumseh North and a high school sports official for more than 35 years. Weinkauf also worked as a director at the Topeka Parochial League for more than 25 years. Survivors include son **Robert Weinkauf**, bs '92, Basehor, Kansas, and sister-in-law Alice Weinkauf, ba '56, Topeka.

## 1970s

**Carol (La Borde) Ballentine**, ba '72, 84, Topeka, on July 5. She worked for Family Services at several Air Force bases and was director of the Good Neighbors program for the American Red Cross. Survivors include daughters **Barbara Ballentine**, ba '78, Topeka, and **Nancy (Ballentine)**

**Zwiesler**, b ed '81, Topeka; and granddaughter **Autumn Prosser**, ba '99, Topeka. **Lawrence Bundy**, bba '71, 68, St. Louis, Missouri, on May 13. He served in the Navy during the Vietnam War and was a civilian worker for the Army. **Ernestine (Rogers) Burghart**, ba '70, 67, Tecumseh, Kansas, on June 17. She was a history teacher at Santa Fe Trail High School in Carbondale, Kansas, and worked for the State of Kansas for more than 30 years. Survivors include mother **Ernestine Rogers**, m ed '64, Topeka. **Ricky Graham**, bba '79, 67, Parkville, Missouri, on June 2. He served in the Marines during the Vietnam War and worked as a computer programmer for the United States Postal Service for more than 25 years. **Douglas Irwin**, jd '72, 65, Wichita, Kansas, on Oct. 9, 2012. He was a military contracts manager at Boeing. Irwin was an intern in the Law Clinic. **Bert Lading**, bba '76, 72, Westmoreland, Kansas, on June 27. He was a compliance specialist for the Farm Service Agency at the United States Department of Agriculture. **Charles Lewis**, bs '76, bsw '77, 93, Manhattan, Kansas, on Sept. 14. **Janet (Richter) McClanahan**, ba '75, bs '75, 61, Overland Park, Kansas, on July 21. She was a social worker in the Olathe school district. Survivors include husband **Michael McClanahan**, ba '75, Overland Park.

**James McLeod**, jd '75, 67, Springfield, Missouri, on June 19. He was an attorney at Miller and Sanford and a member of the Missouri Bar Association and Springfield Metropolitan Bar. McLeod was an intern in the Law Clinic at Washburn. **Gregory Perry**, bba '73, 63, Vassar, Kansas, on June 9. He was a salesman. Survivors include wife **Kathryn (Karr) Perry**, b ed '77, Vassar, brother **Don Perry**, ba '75, Wichita, Kansas, and brothers-in-law **James Dowling**, ba '76, Grain Valley, Missouri, and **Tom Marstall**, bba '86, certificate in industrial safety and health '87, Wakarusa, Kansas. **William North**, jd '76, 64, Cottonwood Falls, Kansas, on Aug. 16. He was a partner at the law firm Masoner and North. North was an intern in the Law Clinic at Washburn. **Dale Sample**, b ed '73, m ed '91, 64, Eudora, Kansas, on Aug. 7. He was an educator, working as a principal at Eudora Middle School and High School, as well as a teacher and football coach at Perry-Lecompton, Seaman and Silver Lake high schools. Sample played football at Washburn. Survivors include wife **Jeannie (Spaulding) Sample**, m ed '80, Eudora. **Heather Shelley**, ba '79, jd '82, 56, Wichita, Kansas, on July 6. She was an attorney and a member of the Wichita Bar Association. Shelley was a member of Alpha Phi and an intern in the Law Clinic at Washburn.

**Carolyn (Arnold) Torrence**, ba '74, 65, Weatherford, Oklahoma, on Sept. 14. She was a reference librarian at Southwestern Oklahoma State University. **Karen Welscher-Enlow**, ba '70, 68, Oakton, Virginia, on May 5. She worked at the Empala Family Therapy Association.

## 1980s

**David Michael Ford**, m ed '89, 57, Abilene, Kansas, on July 12. He was an educator for more than 30 years, including teaching math and coaching at high schools in Ottawa, Madison and Basehor, as well as Shawnee Heights High School, Hutchinson Community College and Ottawa University. As a football coach, Ford led Madison to the Class 1A state championship in 1984. He also served as principal at Alma-Wabaunsee High School and Abilene High School and was the superintendent at Council Grove High School. **Lindsey Hall**, bs '86, 71, Clarks Hill, South Carolina, on July 6. He served in the Air Force for more than 20 years and worked for the South Carolina Department of Corrections for 10 years. **Jean (Thompson) Lane**, bsn '83, 80, Topeka, on July 8. She was a nurse at the Menninger Foundation and a paraprofessional in the Topeka Unified School District. **Jorge Lozano**, bba '88, 52,

Rowlett, Texas, on Sept. 14. He worked for the Kansas Insurance Department.

**Margaret (Spencer) Murphy**, ba '80, 78, Topeka, on Sept. 11.

**Karen (Mattingly) Nichols**, bs '80, 71, Englewood, Colorado, on Aug. 17.

**Timothy Pittman**, jd '86, 61, Lee's Summit, Missouri, on Nov. 26, 2013. He was an attorney at Stephenson and Pittman and worked for the Missouri Department of Labor and Industrial Relations.

**Judith (Marquette) Reynolds**, ba '81, 67, Deerfield Beach, Florida, on Sept. 6. She worked as a frame stylist in Topeka.

**Teresa Rolf**, m ed '85, 67, Topeka, on July 18. She was a teacher in the Topeka Unified School District for 37 years and served as an adjunct professor at the University of Kansas. Rolf also sponsored student teachers through Washburn. Survivors include sisters **Karlene (Rolf) Lockard**, bs '76, Topeka, and **Marianne Rolf**, ba '74, Kansas City, Missouri.

**Mary (Bradshaw) Wodtke**, ba '82, 83, Topeka, on June 26. She was a substitute teacher. Survivors include sons **Stephen Wodtke**, aa '93, Topeka, and **John Wodtke**, attendee, Shawnee, Kansas; daughter **Joanna Wodtke**, ba '92, ma '95, Topeka; and daughter-in-law **Sheila Wodtke**, bba '87, Shawnee, Kansas.

## 1990S

**Raymond Ehlinger**, aas '97, bs '98, certificate in alcohol and drug abuse counseling '96, 66, Topeka, on Aug. 8. He served in the Army for 18 years and worked as a drug and alcohol counselor for the Douglas County Citizen Committee.

**Peggy (Haines) Howe**, bba '92, 54, Topeka, on June 11. She worked in the information systems department at Blue Cross Blue Shield of Kansas. Survivors include daughter **Elizabeth Howe**, certificate in nursing assistant '13, Topeka, sister **Terrie (Haines) Wedel**, bs '93, Topeka, and brother **Patrick Haines**, bba '05, Bentonville, Michigan.

**Travis Lohmeyer**, b ed '98, 40, Alma, Kansas, on June 24. He worked for FedEx, Ed Marling's in Topeka and as a manager at Target in Manhattan, Kansas.

**Franke (Shane) Stickley**, ba '93, 86, Topeka, on June 7. She was co-owner of Taco Villa in Topeka. Survivors include daughters **Sherril (Stickley) Grace**, ba '80, m ed '84, New Orleans, Louisiana, and **Susan Stickley**, b ed '76, Topeka.

## 2000S

**Virginia Blazier**, bsw '04, 50, Topeka, on Aug. 4. She was a cosmetologist at Regis and Super Cuts, as well as a social worker at Breakthrough House and Valeo.

**Sara (Chappell) Deines**, ba '06, bsw '06, 30, Lincoln, Nebraska, on June 20. She worked for the Department of Health and Human Services. Deines was a member of Alpha Phi. Survivors include husband **Christopher Deines**, ba '06, Lincoln.

## 2010S

**Marcus Thompson**, bfa '13, 37, Lawrence, Kansas, on July 17. He was an artist whose work was displayed during the Art en Plein Aire Auction at Washburn in 2012. Survivors include mother **Kathleen Getto**, as '89, Topeka.

## FRIENDS

**Lance Herschell**, 49, Topeka, on June 6. He was a carpenter and a member of Alpha Delta.

**Earl Jackson**, 82, Topeka, on July 12. He worked in facilities at Washburn.

**Jeanie Johnson**, 68, Topeka, on Sept. 12. She was a campus visit and events coordinator for the admissions department at Washburn.

**Mary (Powell) Lagerberg**, attendee, 83, Topeka, on Aug. 12. She was a manager at Ray Beers Clothing Co. and worked for the State of Kansas. Lagerberg was a member of Delta Gamma, the Topeka Civic Theatre and Friends of Mulvane. Survivors include husband **James Lagerberg**, ba '53, Topeka, a former member of the Washburn University Board of Regents, and daughter **Cindy**

**(Lagerberg) Lines**, b ed '80, Springfield, Missouri.

**Margaret Lowry**, attendee, 93, Valley Falls, Kansas, on Aug. 31. She was the wife of alumnus and longtime Washburn supporter **Gordon Lowry**, ba '41, jd '46. Margaret Lowry worked for several federal agencies and was a member and president of United Methodist Women, Literary Ramblers Club and Chapter DK PEO. Other survivors include sons **Gordon Lowry**, ba '64, Honolulu, Hawaii, **James Lowry**, ba '70, Lenexa, Kansas, and **Stuart Lowry**, jd '85, Hays, Kansas; daughters **Susan Lowry**, bsw '69, Toronto, Ontario, and Lynne Lowry, Long Beach, California; and daughter-in-law **Lauren (Messersmith) Lowry**, jd '85, Hays.

**Cal Melick**, 66, Lawrence, Kansas, on Aug. 13. He was a public services librarian at Washburn for more than 30 years.

**Barbara (Sheidley) Petro**, attendee, 90, Topeka, on Sept. 10. She was a homemaker, artist and community volunteer at the Topeka Junior League. Petro also served on the woman's board for Mulvane Art Museum.

**Helen (Burke) Porter Jackson**, 89, Topeka, on Aug. 11. She served on the Washburn University Board of Regents and in the Washburn Women's Alliance. Porter Jackson was an educator for Topeka Public Schools for 35 years.

# CALENDAR OF EVENTS

## ALUMNI EVENTS

### JANUARY

- 9 After Hours, 5 p.m.
- 14 Washburn Wednesday, The Other Place, Overland Park, Kansas, 5:30 p.m.

### FEBRUARY

- 1-7 Alumni trip to Cancun
- 11 Washburn Wednesday, The Other Place, Overland Park, Kansas, 5:30 p.m.
- 13 After Hours, 5 p.m.
- 19 Wake Up With Washburn with Mark Beffort, 7:30 a.m.
- 21 Alumni luncheon in Phoenix, Arizona, with President Farley, University Club of Phoenix, Noon to 3 p.m.
- 22 Alumni luncheon in Tucson, Arizona, with President Farley, University Club of Phoenix, Noon to 3 p.m.

### MARCH

- 5-8 Alumni reception at MIAA basketball tournament in Kansas City, Missouri, TBA
- 11 Washburn Wednesday, The Other Place, Overland Park, Kansas, 5:30 p.m.
- 13 After Hours, 5 p.m.
- 20 Top of the Tower luncheon, Bank of America Building at 534 S. Kansas Ave., Topeka, Noon
- 26 Alumni event at Ameristar Casino in Kansas City, Missouri, 6-8 p.m.

### APRIL

- 2 Wake Up With Washburn with Priti Lakhani, 7:30 a.m.
- 8 Washburn Wednesday, The Other Place, Overland Park, Kansas, 5:30 p.m.
- 10 After Hours, 5 p.m.
- 14 Alumni Association baseball tailgate, Falley Field, 5 p.m.
- 25 Alumni Awards banquet, 6 p.m.

*Alumni events are in the Bradbury Thompson Alumni Center, unless otherwise noted. For more information, including events added after press time, call 785.670.1641 or follow the Alumni Association at [Twitter.com/washburnalumni](https://twitter.com/washburnalumni).*

## MULVANE EXHIBITS & EVENTS

### THROUGH MARCH 14

“Masters at the Mulvane: Ninety Years of Collecting”  
Exhibition curated from the collection of the Mulvane Art Museum celebrating the facility’s 90-year anniversary.

### JANUARY 16 – MARCH 14

“Drift and Drag: Reflections on Water”  
Interdisciplinary exhibition project focuses on Kansas water issues.

“Daniel Coburn, New Works”  
Washburn alumnus whose work investigates the family photo album employed as a visual infrastructure for a flawed American dream.

### MARCH 27 – MAY 16

“Chicanitas: Small Paintings from the Cheech Marin Collection”



Albert Bierstadt’s “Lander’s Peak” will be on display during the “American Art Before the Depression” exhibition from April to June at the Mulvane Art Museum. *Photo courtesy of the Mulvane Art Museum*

### APRIL – MAY

“Washburn University Art Department Student Exhibition”

### APRIL – JUNE

“American Art Before the Depression: Selections from the Mulvane’s Permanent Collection”

*Exhibits and events are in the Mulvane Art Museum located in Garvey Fine Arts Center. For more information, call 785.670.1124 or visit [washburn.edu/mulvane](http://washburn.edu/mulvane).*

## THEATRE EVENTS

### FEBRUARY

- 13-14 “The Other Place” by Sharr White, 7:30 p.m.
- 15 “The Other Place” by Sharr White, 2 p.m.

### APRIL

- 17-18 “The Glass Menagerie” by Tennessee Williams, 7:30 p.m.
- 24-25 “The Glass Menagerie” by Tennessee Williams, 7:30 p.m.
- 26 “The Glass Menagerie” by Tennessee Williams, 2 p.m.

*Located at the Andrew J. and Georgia Neese Gray Theatre, Garvey Fine Arts Center. For information, call 785.670.1639.*

## MUSIC EVENTS

### FEBRUARY

- 14 I Love Cello Day Concert, 3 p.m.

- 23 Washburn Orchestra and Wind Ensemble Concert, 7:30 p.m.

### MARCH

- 9 Late Winter Choral Concert, 7:30 p.m.
- 12 Washburn Jazz Concert, 7:30 p.m.
- 27-28 "Iolanthe" by Washburn Opera Studio, 7:30 p.m.
- 31 Washburn Wind Ensemble Chamber Concert, 7:30 p.m.

### APRIL

- 7 Washburn Faculty Brass Quintet Concert, 7:30 p.m.
- 10 Coleman Hawkins Jazz Festival Concert, 7:30 p.m.
- 14 Washburn Percussion Ensemble Festival Concert, 7:30 p.m.
- 17 Broadway in the Heartland Concert, 7:30 p.m.
- 19 Washburn Cabaret Concert, 7:30 p.m.
- 20 Washburn University Band Concert, 7:30 p.m.
- 24 Honors Concert, 7:30 p.m.
- 30 Washburn Wind Ensemble Concert, 7:30 p.m.

*Located at White Concert Hall, unless otherwise noted. For information, call 785.670.1511.*

## ACADEMICS, STUDENT LIFE & SPECIAL EVENTS

### JANUARY

- 9 Lean Six Sigma: White Belt, Henderson 107, 9 a.m.
- 19 Martin Luther King Day, University closed
- 20 Classes begin
- 23 Ichabod Senior and Junior Day
- 23 Leadership Institute Spring Orientation, Bradbury Thompson Alumni Center, 4 p.m.
- 26-30 Union Daze, Memorial Union

### FEBRUARY

- 1 Big Game Party, Capitol Plaza Hotel, 4:30 p.m.
- 4 Spring Connect and Select Fair, Memorial Union, 11 a.m.
- 4 DiversiTEA, Mabee Library, 3 p.m.
- 5 Lincoln Harman Lecturer Steven Hahn, University of Pennsylvania, Bradbury Thompson Alumni Center, 7 p.m.
- 5-6 Lean Six Sigma: Yellow Belt, Memorial Union, 8:15 a.m.
- 7 Kansas Philosophical Society Annual Meeting, Memorial Union, noon
- 12 First Year Experience Scholar Awards, Bradbury Thompson Alumni Center, 2 p.m.
- 13 Leadership Institute Scholarship Interview Day, Memorial Union
- 16 Résumé Roadshow, Memorial Union, 10 a.m.
- 16 Ichabod Junior Day
- 18 Spring Career Fair, Lee Arena, 10 a.m.
- 19 Chinese New Years Buffet, Washburn Room, 11 a.m.
- 27 Kansas Silent Film Festival, White Concert Hall, 7 p.m.
- 28 Kansas Silent Film Festival, White Concert Hall, 10 a.m.

### MARCH

- 3 Ichabod Transfer Day
- 4 DiversiTEA, Mabee Library, 3 p.m.
- 6 Leadership Challenge Event Pilot, Vogel Room
- 11 Spring Education Interview Day, Memorial Union
- 11 Comfort Food Buffet, Washburn Room, 11 a.m.
- 13 Ichabod Junior Day
- 16-17 Lean Six Sigma: Yellow Belt, Memorial Union, 8:15 a.m.
- 16-20 Spring Break
- 17 Washburn Coaches Luncheon, Bradbury Thompson

- Alumni Center, noon
- 23 Leadership Challenge Event Training, Memorial Union, 6 p.m.
- 24 Leadership Studies Minor Orientation, Memorial Union, 12:20 p.m.
- 25 Leadership Studies Minor Orientation, Memorial Union, noon
- 26 Leadership Challenge Event Training, Memorial Union, 6 p.m.
- 27 Leadership Challenge Event Training, Memorial Union, 3 p.m.
- 28 Occupational Therapy Assistant Committee Fun Run, 8 a.m. registration (Email janice.bacon@washburn.edu for more information)
- 28 Leadership Challenge Event Training, Bradbury Thompson Alumni Center, 9:30 a.m.

### APRIL

- 1 First Year Experience Faculty Debate, Memorial Union, 6:30 p.m.
- 3 Ichabod Sophomore Day
- 6 Guest Lecturer Dale Jamieson, New York University, Bradbury Thompson Alumni Center, 7:30 p.m.
- 6-8 Lean Six Sigma: Green Belt, Memorial Union, 8 a.m.
- 9-10 Leadership Challenge Event
- 12-18 National Student Employment Week
- 15 Transfer Student Orientation, 12:30 p.m.
- 20-24 Greek Week
- 21-22 Lean Six Sigma: Yellow Belt, Memorial Union, 8:15 a.m.
- 23 Leadership Institute Spring Celebration
- 23 Scorch on the Porch, Memorial Union, 11 a.m.
- 24 Apeiron, 10 a.m.
- 27 Greek Week Awards Banquet, Bradbury Thompson Alumni Center
- 27-29 Lean Six Sigma: Green Belt, Memorial Union, 8 a.m.

## SCHOOL OF LAW

### JANUARY

- 31 Low Income Tax Assistance Clinic, 9 a.m.

### FEBRUARY

- 7 Low Income Tax Assistance Clinic, 9 a.m.
- 14 Low Income Tax Assistance Clinic, 9 a.m.
- 21 Low Income Tax Assistance Clinic, 9 a.m.
- 28 Low Income Tax Assistance Clinic, 9 a.m.

### MARCH

- 7 Low Income Tax Assistance Clinic, 9 a.m.
- 9 U.S. Supreme Court Swearing-In Ceremony and Washburn Law Alumni Event, Washington, D.C.
- 14 Low Income Tax Assistance Clinic, 9 a.m.
- 21 Low Income Tax Assistance Clinic, 9 a.m.
- 27 Washburn Law Alumni Awards Reception, Bradbury Thompson Alumni Center
- 28 Washburn Law Board of Governors Meetings
- 28 Low Income Tax Assistance Clinic, 9 a.m.

### APRIL

- 4 Low Income Tax Assistance Clinic, 9 a.m.
- 11 Low Income Tax Assistance Clinic, 9 a.m.

*Located at the Washburn School of Law, unless otherwise noted. For information, call 785.670.1060.*



CAPITOL FEDERAL CENTER FOR LEARNING



LIVING LEARNING CENTER