

SPORTS SCHEDULE

ICHABOD FOOTBALL

SEPTEMBER

- 13 Fort Hays State University, 7 p.m.
- 20 University of Central Missouri, Warrensburg, 1:30 p.m.
- 27 **Missouri Western State University, 1 p.m. (Family Day)**

OCTOBER

- 4 Missouri Southern State University, Joplin, 2 p.m.
- 11 **Emporia State University, 1 p.m. (Homecoming)**
- 18 Truman State University, Kirksville, Mo., 2 p.m.
- 25 **Northwest Missouri State University, 1 p.m. (Athletics Hall of Fame)**

NOVEMBER

- 1 Pittsburg State University, 2 p.m.
- 8 **University of Nebraska-Omaha, 1 p.m.**

All games in bold played at Washburn in Yager Stadium at Moore Bowl.

LADY BLUES VOLLEYBALL

SEPTEMBER

- 12-13 Dowling College Tournament, Oakdale, N.Y.
- 12 Adelphi University, 2 p.m.
- 12 Dowling College, 6 p.m.
- 13 Bentley College, 11 a.m.
- 17 **Northwest Missouri State University, 7 p.m.**
- 19 Truman State University, Kirksville, Mo., 7 p.m.
- 20 Missouri Western State University, St. Joseph, 2 p.m.
- 24 **University of Nebraska-Omaha, 7 p.m.**
- 26 University of Central Missouri, Warrensburg, 7 p.m.

OCTOBER

- 3-4 **Lady Blues Volleyball Fall Classic**
- 3 **East Central University, 11:30 a.m.**
- 3 **Midwestern State University, 7 p.m.**
- 4 **University of the Incarnate Word, 11 a.m.**
- 4 **University of Central Oklahoma, 7 p.m.**
- 8 Missouri Southern State University, Joplin, 7 p.m.
- 10 **Southwest Baptist University, 7 p.m.**

- 11 **Pittsburg State University, 5 p.m.**
- 15 Fort Hays State University, 7 p.m.
- 17 **Emporia State University, 7 p.m.**
- 21 Northwest Missouri State University, Maryville, 7 p.m.
- 24 **Truman State University, 7 p.m.**
- 25 **Missouri Western State University, 5 p.m.**
- 29 University of Nebraska-Omaha, 7 p.m.
- 31 **University of Central Missouri, 7 p.m.**

NOVEMBER

- 4 **Missouri Southern State University, 7 p.m.**
- 7 Southwest Baptist University, Bolivar, Mo., 7 p.m.
- 8 Pittsburg State University, 2 p.m.
- 12 **Fort Hays State University, 7 p.m.**
- 14 Emporia State University, 7 p.m.
- 20-23 NCAA Volleyball South Central Region Tournament, TBA

DECEMBER

- 4-6 NCAA Volleyball National Championship
- 4 National Quarterfinal, TBA
- 5 National Semifinal, TBA
- 6 National Final, TBA

All games in bold played at Washburn in Lee Arena, Petro Allied Health Center.

LADY BLUES SOCCER

SEPTEMBER

- 10 University of Central Oklahoma, Wichita, Kan. TBA
- 13 **University of Central Missouri, 7 p.m.**
- 18 **Truman State University, 7 p.m.**
- 20 **Missouri Western State University, 7 p.m.**
- 25 University of Central Missouri, Warrensburg, 7 p.m.
- 27 Southwest Baptist University, Bolivar, Mo., 4 p.m.

OCTOBER

- 1 Rockhurst University, Kansas City, Mo., 7p.m.
- 4 **Missouri Southern State University, 7 p.m.**
- 9 **Northwest Missouri State University, 7 p.m.**
- 11 **University of Nebraska-Omaha, 6 p.m.**

- 16 Emporia State University, 7 p.m.
- 18 Northwest Missouri State University, Maryville, 4 p.m.
- 23 University of Nebraska-Omaha, 4 p.m.
- 25 **Southwest Baptist University, 6 p.m.**
- 30 Truman State University, Kirksville, Mo., 2 p.m.

NOVEMBER

- 1 **Emporia State University, 7 p.m.**
- 6 Missouri Southern State University, Joplin, TBA
- 9 Missouri Western State University, St. Joseph, 1 p.m.

All games in bold played at Washburn in Yager Stadium at Moore Bowl.

ICHABOD BASKETBALL

NOVEMBER

- 4 University of Kansas, Lawrence, 7 p.m.
- 9 Kansas State University, Manhattan, TBA
- 11 University of Nevada - Las Vegas, TBA
- 15-16 **Washburn Ichabods Basketball Classic**
- 15 **Colorado Christian University, 7 p.m.**
- 16 **Central Methodist University (Mo.), 3 p.m.**
- 25 **Baker University, 7:30 p.m.**
- 28-29 Central Oklahoma Men's Basketball Classic, Edmond, Okla.
- 28 **Southwestern Oklahoma State University, 6 p.m.**
- 29 University of Central Oklahoma, 8 p.m.

DECEMBER

- 3 **University of Nebraska-Omaha, 7:30 p.m.**
- 6 **Northwest Missouri State University, 7:30 p.m.**
- 13 Truman State University Kirksville, Mo., 3 p.m.
- 17-18 Hoop N Surf, Honolulu, Hawaii
- 17 Brigham Young University, TBA
- 18 Chaminade University, TBA
- 29 Missouri Western State University, St. Joseph, 7:30 p.m.
- 31 **Fort Hays State University, 7:30 p.m.**

JANUARY

- 3 **University of Central Missouri, 7:30 p.m.**
- 7 **Southwest Baptist University, 7:30 p.m.**

- 10 Missouri Southern State University, Joplin, 7:30 p.m.

All games in bold played at Washburn in Lee Arena, Petro Allied Health Center.

LADY BLUES BASKETBALL

NOVEMBER

- 2 Kansas State University, Manhattan, TBA
- 9 University of Kansas, Lawrence, 2 p.m.
- 19 **WBCA Pink Zone™ game, University of Missouri- St. Louis, 7 p.m.**
- 22 **Southwestern College (Kan.), 7 p.m.**
- 25 **Drury University 5:30 p.m.**
- 28-29 **Capitol Plaza/AM580 WIBW Radio Holiday Classic**
- 28 **Sterling College (Kan.), 7 p.m.**
- 29 **Indiana University of Pennsylvania, 7p.m.**

DECEMBER

- 3 **University of Nebraska-Omaha, 5:30 p.m.**
- 6 **Northwest Missouri State University, 5:30 p.m.**
- 13 Truman State University, Kirksville, Mo., 1 p.m.
- 17, 19 Cruzin Classic
- 17 Nova Southeastern University, Fort Lauderdale, Fla., TBA
- 19 Barry University, Miami Shores, Fla., TBA
- 29 Missouri Western State University, St. Joseph, Mo., 5:30 p.m.
- 31 **Fort Hays State University, 5:30 p.m.**

JANUARY

- 3 **University of Central Missouri, 5:30 p.m.**
- 7 **Southwest Baptist University, 5:30 p.m.**
- 10 Missouri Southern State University, Joplin, 5:30 p.m.

All games in bold played at Washburn in Lee Arena, Petro Allied Health Center.

**For information, call
(785) 620-1135 or
visit www.wusports.com**



**WASHBURN
ALUMNI
ASSOCIATION**

1700 SW College Ave.
Topeka, KS 66621

Address Service Requested

Non Profit
Organization
U.S. Postage
PAID
Topeka, KS
Permit No. 689

WASHBURN ALUMNI™

Fall 2008

the **WASHBURN**™ experience

Back to school:
How alumni and
friends can help
recruit students
to Washburn



CONTENTS



18

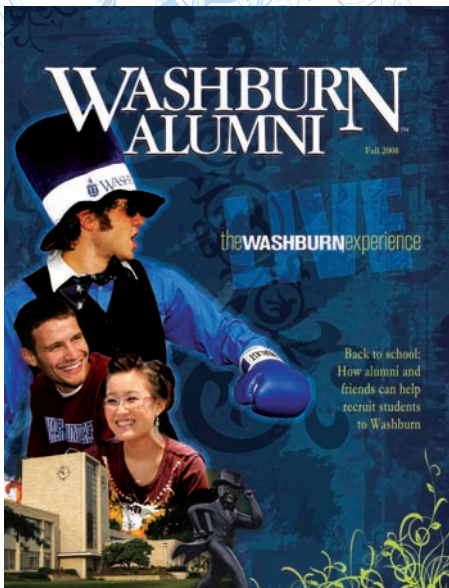
FEATURES

4 2008 Alumni Fellows:
College of Arts and Sciences and Schools of Applied Studies, Business, Law and Nursing honor outstanding graduates

9 Back to school:
How alumni and friends can help recruit students to Washburn

12 Bringing students to Washburn:
Hindman Scholarship helps hundreds of students from western Kansas

29 Give my regards to Bodway:
2008 Homecoming schedule and reservations



9

on the cover

Decreasing enrollment presents a challenge to everyone, including alumni and friends of Washburn, to reach out and encourage potential students to visit the campus and experience the many opportunities awaiting them. In this issue is a Washburn fact sheet which you can copy and give to high school students among your family and friends.

Contact Us!

Your news, thoughts and questions are important to us. Please write, telephone or send us an e-mail. Letters to the editor and news of jobs, honors, weddings, anniversaries and births are always welcome. Please include your name, class year, address and daytime phone number. Letters to the editor may be edited for length and clarity.

Address: 1700 SW College Ave., Topeka, Kan., 66621

Telephone: (785) 670-1641

E-mail: wualumni@washburn.edu

Web site: www.washburn.edu/alumni

To the editor: attention to Joy Thompson, (785) 670-1657, joy.thompson@washburn.edu

Washburn Alumni Association

Alumni director
Susie Hoffmann, bba '87

Alumni magazine editor
Joy Thompson

Contributors

Dena Anson, ba '01
director, university relations

Katy Brown, aa '07
secretary, Alumni Association

Gene Cassell,
sports information director

Peggy Clark,
university photographer

Amanda Hughes, ba '00
assistant director, university relations

Martha Imparato,
Mabee Library special collections librarian

Robin Kruschinska, ba '99
assistant director, Alumni Association

Scott Sewell,
communications officer,
Washburn Endowment Association

Jeremy Wangler,
assistant sports information/marketing director

Vickie Waters,
office assistant, university relations

FryeAllen, Inc., Topeka, Kan.
design and layout

The Washburn Alumni magazine is published quarterly by the Washburn Alumni Association for alumni, faculty, staff and friends of the university. Subscription is by dues-paid membership in the Washburn Alumni Association. Third-class postage paid at Topeka, Kan.

From the President

The Washburn Experience

We want to believe Washburn University is the best place to receive a college education, but it is more accurate to say there is no better place than Washburn to receive a college education.

The distinction is about fit. Every college is the right place for someone. We work hard at being the right fit for thousands of students who appreciate small classes and professional, engaged faculty with whom they will interact.

We are the right fit for those seeking rigorous academic programs, preparing them for employment, further education and service to their communities.



Jerry Farley

“...there is no better place than Washburn to receive a college education...”

We are the right fit for students wanting opportunities for internships and practical study, giving them experience and opening opportunities for employment.

Washburn is the right place for students who want to be involved

and engaged in the richness of college life outside the classroom where additional skills, interests and talents are developed.

Washburn is the right location for those who seek our unique learning environment.

These are some of the reasons why the Washburn experience was right for you and tens of thousands of others.

Washburn is the right fit for some of the students in your sphere of influence. Please help us identify and recruit these students. Talk to teachers and school counselors in your area. Host an event for prospective students and invite us to attend. Bring your son, daughter, grandchild, neighbor or friend here for a campus visit. Create a scholarship to help a student attend Washburn. Tear out pages 9-10 in this magazine, make copies and hand them to high school students you know.

We are facing some challenges, including a slight decrease in the number of high school graduates from Kansas, a decrease in the percentage of young men entering college, population shifts from rural to urban, a tougher economy and fuel costs that restrict family budgets.

In the final analysis, your success as a graduate is the reputation Washburn promotes and the reason why Washburn is a top rated university. Help a new generation become Washburn alumni.

Jerry Farley



20

DEPARTMENTS

2 CALENDAR OF EVENTS

6 ALUMNI NEWS

12 WASHBURN ENDOWMENT

16 CAMPUS NEWS & SPORTS

23 CLASS NOTES



6

CALENDAR OF EVENTS

ALUMNI EVENTS

SEPTEMBER

- 27 Alumni Association sponsored 5K Fun Run/Walk, starting at Bradbury Thompson Alumni Center, 8:30 a.m. (Family Day)
- 27 Alumni Association tailgate, Washburn vs. Missouri Western State University, 11:30 a.m. (Family Day)



OCTOBER

- 9  Wake Up With Washburn, speaker William Marshall, ba '61, 7:30 a.m.
- 10 Alumni Fellows luncheon, 11:30 a.m.
- 10 Alumni Association board of directors meeting, 1 p.m.
- 10 After Hours, 5 p.m.
- 11 Alumni Association tailgate, Washburn vs. Emporia State University, 11:30 a.m. (Homecoming)
- 25 Alumni Association tailgate, Washburn vs. Northwest Missouri State University (Athletics Hall of Fame)
- 31 - Nov. 8 Alumni Association-sponsored travel to Morocco

NOVEMBER

- 7 After Hours, 5 p.m.
- 8 Alumni Association tailgate, Washburn vs. University of Nebraska-Omaha, 11:30 a.m.
- 11 Alumni Association reception in Las Vegas following Ichabod basketball vs. University of Nevada-Las Vegas

2 | fall 2008

DECEMBER

- 5 After Hours, 5 p.m.
- 8 Holiday party at the Plaza in Kansas City, Mo., 6 p.m.

Alumni events are in the Bradbury Thompson Alumni Center, unless noted.

Football tailgates are located in the parking lot north of Yager Stadium at Moore Bowl.

For information, call (785) 670-1641.

MULVANE EXHIBITS AND EVENTS

SEPTEMBER

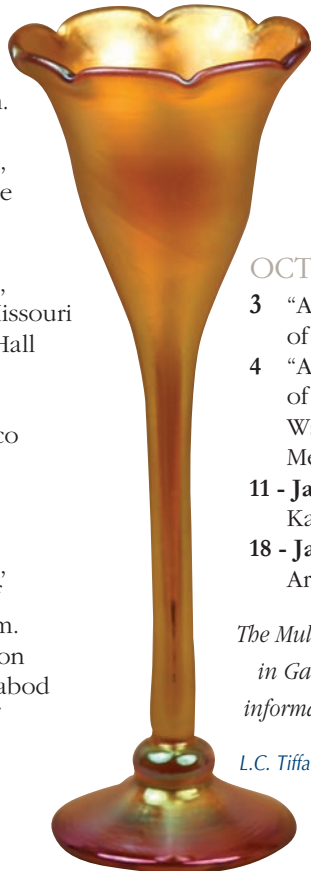
- 6 - Oct. 3 "Artworks: The Magic of Mirrors" Showing through Sept. 28 "The Printed Image 2," a national juried biennial exhibition presented in collaboration with the Alice C. Sabatini Gallery

OCTOBER

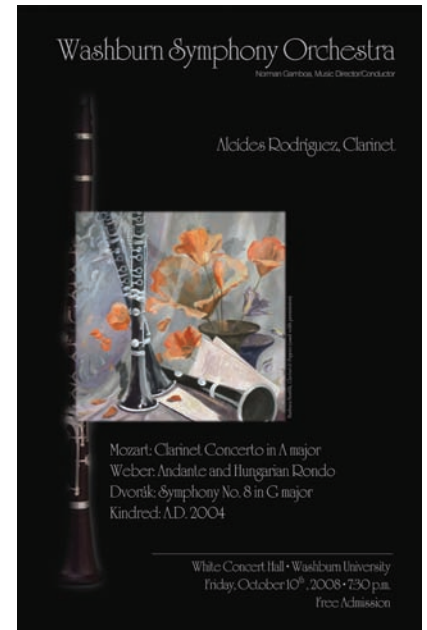
- 3 "Artworks: The Magic of Mirrors"
- 4 "Artworks: The Magic of Mirrors" auction, Washburn Room, Memorial Union, 7 p.m.
- 11 - Jan. 25 "Liquid Fire: Kansas Collections"
- 18 - Jan. 18, 2009 Washburn Art Faculty Exhibition

The Mulvane Art Museum is located in Garvey Fine Arts Center. For information, call (785) 670-1124.

L.C. Tiffany Favrite stemmed vase



MUSIC



OCTOBER

- 10 Orchestra Concert, 7:30 p.m.
- 15 Marching Band Festival, Yager Stadium at Moore Bowl, 7:30 p.m.
- 16 Jazz Concert, 7:30 p.m.
- 19 Fall Choral Concert, 7:30 p.m.
- 24 Wind Ensemble Concert, 7:30 p.m.

NOVEMBER

- 3 Stacey Beaver Concert, 7:30 p.m.
- 5 String Orchestra Concert, 7:30 p.m.
- 7 Jazz Festival, 7:30 p.m.
- 20 Jazz Concert, 7:30 p.m.
- 24 Orchestra Concert, 7:30 p.m.
- 30 Percussion Ensemble Christmas Concert, 3 p.m.

DECEMBER

- 5 Wind Ensemble Concert, 7:30 p.m.
- 7 Vespers, 4 p.m.



Millefiore cup and saucer



Millefiore pitcher and muffineer with metal lids

THEATRE

NOVEMBER

- 7 - 8 "Bus Stop," 8 p.m.
 14 - 15 "Bus Stop," 8 p.m.
 16 "Bus Stop," 2 p.m.
 Written by William Inge



DECEMBER

- 6 Performing Arts for Children:
 "Furry Tails with a Twist,"
 Washburn Room, Memorial Union,
 10:30 a.m., 1:30 p.m.
 Written by Jennifer Hickok DeFratis

*Located at the Andrew J. and
 Georgia Neese Gray Theatre,
 Garvey Fine Arts Center, unless noted.
 For information, call (785) 670-1639.*

ACADEMICS AND STUDENT LIFE

SEPTEMBER

- 27 Family Day, Washburn vs. Missouri
 Western State University

OCTOBER

- 2 - 5 Fall break

- 11 Homecoming,
 Washburn vs.
 Emporia State
 University



NOVEMBER

- 3 Advance registration begins for
 spring semester and continues
 through Dec. 5
 26 - 30 Thanksgiving student recess

DECEMBER

- 5 Last day of classes
 12 Fall Commencement, Lee Arena,
 Petro Allied Health Center,
 6:30 p.m.
 13 School of Nursing Recognition
 Ceremony, White Concert Hall,
 Garvey Fine Arts Center, 10 a.m.
 25 - Jan. 1 Winter holiday break
 (WU closed)

SPECIAL EVENTS

SEPTEMBER

- 5 - 14 Washburn booth at the State Fair,
 Meadowlark Building, Hutchinson,
 Kan.
 25 Albert Guardado,
 ba '98, speaking
 in conjunction
 with Hispanic
 Heritage Month,
 Kansas Room,
 Memorial Union,
 7 p.m.
 26 Executive in
 Residence honor
 luncheon for
 Mayo Schmidt,
 bba '80, Regina,
 Saskatchewan,
 Canada, Washburn
 Room, Memorial
 Union, 11:45 a.m.



OCTOBER

- 2 Women in Science Day. For
 information, call (785) 670-2147.

NOVEMBER

- 4 Math Day. For information, call
 (785) 670-1491.
 11 Veterans Day ceremony, near
 Vietnam Veterans Memorial,
 10:55 a.m. For information, e-mail
 student-services@washburn.edu.
 13 - 16 KTWU "Lights, Camera, Auction!"
 on-air fundraising
 event. For
 information, call
 (785) 670-1111.



Volunteer Opportunities

- **Sept. 27:** 5K Family Day
 Scholarship Fun Run/Walk.
 Alumni and friends are
 needed to help with event.
*Please contact the Alumni
 Association office,
 (785) 670-1641 or e-mail
 wualumni@washburn.edu.*
- **Nov. 13 - 16:** KTWU needs
 volunteers to help with "Lights,
 Camera, Auction!" fundraiser
- **Nov. 29 - 30 and Dec. 1 - 7**
 membership drives. *Contact
 Kathy Woods at (785) 670-3162 or
 e-mail kathy.woods@washburn.edu*
- **Dec. 6:** Quest High School
 Academic Competition needs
 volunteers to quiz high school
 participants at Super Saturday
 event, 9:30 a.m. - 4 p.m.
*To sign up, contact Amanda Hughes,
 at (785) 670-2153 or e-mail
 amanda.hughes@washburn.edu.*

ALUMNI FELLOWS

2008 Washburn Alumni Fellows

Sponsored by the Washburn deans and the Alumni Association, the Alumni Fellows program recognizes alumni who are distinguished in their career fields. The Alumni Fellows will be honored at a luncheon at 11:30 a.m. Oct. 10 in the Ruth Garvey Fink Convocation Hall of the Bradbury Thompson Alumni Center.

To register for the Alumni Fellows luncheon, see page 29.

Barbara Davison, bba '86

SCHOOL OF BUSINESS

Hometown: Benton, Ill.

Current residence: Auburn, Kan.

Current occupation: Founder and president, Investment Training and Consulting Institute Inc.

Professional certifications: Certified internal auditor; certified information system auditor; certified investments and derivatives auditor; fellow, Life Management Organization

Honors and accomplishments: Distinguished faculty leader, Institute of Internal Auditors; author of five books on investment and derivative auditing

Professional and community service: Past chair of the board, American Red Cross, Topeka Area Chapter

Washburn memory: "Dr. Donald Rueschoff not only taught accounting, but had many stories from real life work experience. He brought education to life by sharing these stories with the class. I always looked forward to his class. I was a non-traditional student working full time during the day and attending night school for many years to earn my degree. I am grateful to the School of Business and the supportive faculty who worked with me to manage this process so I could complete my degree."



Karla (Fager) Hedquist, ba '88

COLLEGE OF ARTS AND SCIENCES

Hometown: Ozawkie, Kan.

Current residence: Topeka

Current occupation: Program director, Shawnee County Medical Society HealthAccess

Honors and accomplishments: In 2006, joined HealthAccess, working to improve access to health care for uninsured, low-income residents of Shawnee County. From 1991 to 2006, while at Valeo Behavioral Health Care, designed and implemented the Supported Employment Services program and provided technical assistance to mental health centers statewide that were implementing similar programs; nominated by Valeo for YWCA Woman of Excellence Award; Kansas Rehabilitation Association Job Placement Specialist of the Year

Professional and community service: Past board president and chairwoman of ERC Resource and Referral committees; communications committee chairwoman, First United Methodist Church; member, Stormont-Vail Regional Health Center community advisory committee

Washburn memory: "While attending Washburn, I lived upstairs from Chris Hedquist, a good looking and intelligent Washburn student majoring in history and political science. Our first date was a movie and dinner at Tortilla Jacks. We have been married 23 years."



Richard Hite, jd '53

SCHOOL OF LAW

Hometown: Hiawatha, Kan.

Current residence: Wichita, Kan.

Current occupation: Partner, law firm of Hite, Fanning & Honeyman LLP

Honors and accomplishments: Distinguished Alumni Award, Washburn School of Law, 2007; William Kahrs Lifetime Achievement Award, Kansas Association of Defense Counsel, 2004; Lifetime Achievement Award, Wichita Bar Association, 2004; Phil Lewis Medal of Distinction, Kansas Bar Association, 1995; Howard Kline Distinguished Service Award, Wichita Bar Association, 1993; Outstanding Service Awards, Kansas Bar Association, 1973, 1988

Professional and community service: Chairman, Kansas Supreme Court Nominating Commission, 2001- present; chairman, board of directors, Via Christi Health System, 2000-02; president, National Conference of Commissioners on Uniform State Laws, 1993-95;



Letters of congratulations: *If you would like to send your congratulations to an Alumni Fellow, please mail to Robin Kruschinska, 1700 SW College Ave., Topeka, Kan., 66621; fax to (785) 670-1036; or e-mail robin.kruschinska@washburn.edu.*

fellow, American College of Trial Lawyers; president, 1990-02, and member, 1983-93, Washburn Law School Association board of governors; president, United Way of the Plains, 1981

Washburn memory: "Sitting in 7 a.m. classes in Boswell Hall with ice formed inside the windows, trying to take notes while wearing gloves."

Pamela Johnson-Betts, ba '72

SCHOOL OF APPLIED STUDIES

Hometown and current residence: Topeka

Current occupation: Executive director, Topeka Public Schools Foundation

Additional education: Master of social work, University of Kansas; executive development program, Lucas Group; School Development Institute, Yale University; licensed specialist clinical social worker; certified public manager

Honors and accomplishments: Woman of the Year Award, Topeka Chapter of American Business Women of America; Kansas Certificate of Recognition for Outstanding Contributions, Gov. Kathleen Sebelius; recognized for service and community leadership by City of Topeka; Whitney M. Young Award, Boy Scouts of America

Professional and community service: Secretary of Kansas Department on Aging, 2003-06; executive director, Kansas African-American Affairs Commission, 2000-03; director of office of government and community relations, Kansas Department of Health and Environment, 1991-96; member, Stormont-Vail HealthCare board of directors; inaugural member, Washburn Women's Alliance

Washburn memory: "Educationally, the support and encouragement of Donna Love. Socially, the fun and excitement of being honored by fellow students as a candidate for both Homecoming & Kaw yearbook queens."



Carol Lynch-Perry, bsn '84

SCHOOL OF NURSING

Hometown and current residence: Topeka

Current occupation: Vice president of patient care services and chief nursing officer, Stormont-Vail HealthCare

Additional education: Master of science in management, Baker University; certification, American College of Healthcare Executives/Senior Healthcare Executives Institute

Honors and accomplishments: Leadership Kansas, 2008; nominee, YWCA Woman of Excellence Award; nominee, Kansas Heart of Healthcare

Professional and community service: In her 28th year at Stormont-Vail, she has also served as a student nursing technician, a registered nurse in labor and delivery and director of maternal/child services; board member of Bethel Community Church and March of Dimes, services division, Topeka and Greater Kansas City; nursing advisory committees for Baker University and Washburn University



Washburn memory: "Washburn provided me with a strong educational foundation. I enjoyed all the university activities such as football, baseball, community activities and made long-term friendships and professional peers."

John McConnell, bs '60

COLLEGE OF ARTS AND SCIENCES

Hometown: Humboldt, Neb.

Current Residence: Grand Junction, Colo.

Current Occupation: Founder and director, Western Colorado Math and Science Center

Honors and accomplishments: Honorary doctor of science, University of Colorado, 2004; Corporation for Public Service Award, 2002; Olympic torchbearer, 2002; Daily Point of Light Award, 2000; John Stanford Education Heroes Award, U.S. Dept. of Education, 1998

Professional and community service: Retired after 30 years as a physicist from Los Alamos National Laboratories; authored more than 30 scientific publications and reports; continues work at Center, which served more than 30,000 students in the past four years.

Washburn Memory: "I came from a one-room country school house and a small rural high school. The small college feel of the '50s really fit my needs. My best memories of Washburn are of Miss Margaret Martinson, Dr. Paul Eberhardt and Dr. Stan Alexander. I hope I am doing as good a job with kids in math and science as those faculty members I have admired so much."



Kirk Romary, bs '56

COLLEGE OF ARTS AND SCIENCES

Hometown and current residence: Topeka

Additional education: Doctorate in physical chemistry, Kansas State University

Honors and accomplishments: Numerous research publications in the area of thermodynamics and complex compound formation; consultant and proposal reviewer for the National Science Foundation; manuscript reviewer for numerous chemical journals and textbook publishers; Wisconsin Governor's Commission on Higher Education; named to Outstanding Young Men in Science and Who's Who in America

Professional and community service: A 33-year academic career included positions at the University of Nevada and Washburn; served as assistant program director for undergraduate research at the National Science Foundation; 26 years as both professor of physical chemistry and department chair at the University of Wisconsin-Whitewater, retiring in 1994 as emeritus professor.

Favorite Washburn Memory: "I appreciated the solid fundamental education I received at Washburn. However, a professional career highlight of mine was as a faculty member sharing productive, original research experiences with five uniquely motivated students."



Make 2009 a year of travel abroad with the Alumni Association

Spring 2009: Mediterranean cruise | May 28 - June 9



Fly to Rome, Italy, and board the *ms Noordam* for a 10-day Mediterranean cruise. Visit the ports of Civitavecchia, (Rome) Italy; Dubrovnik, Croatia; Kerkira, Corfu, Greece; Katakolon (Olympia) Greece; Santorini, Greece; Kusadasi (Ephesus), Turkey; Piraeus (Athens) Greece; and Messina, Sicily, Italy. At the conclusion of the cruise, enjoy a day on your own in Rome with an overnight stay. Prices begin at \$3,895 per person double occupancy and include roundtrip airfare from Kansas City; a visit to the ancient Roman port of Ostia, Antica; a 10-day luxury cruise, all meals onboard the ship; one night's hotel accommodations in Rome following the cruise, and all port charges, fees and taxes. Space is limited, so inquire early to make your reservations.

Fall 2009: Mexico's Yucatan Peninsula | Nov. 8 - 15



Explore the history of ancient civilizations. The adventure starts and ends in the Western Caribbean resort of Cancun. Admire the beachfront ruins at Tulum and the Mayan city of Coba en route to Chichen Itza. Visit the Ball Court, El Castillo and the Cenote Sagrado. Stop in Izamal, a classic Mayan religious site, on the way to Uxmal. Visit the Palace of Masks in Kabah. Then go to Merida for sightseeing and a visit to the cathedral and the Museum of Anthropology and History. See the Mayan city of Ek Balam and its enormous pyramid. Discover the charming town of Valladolid before returning to Cancun and traveling home. Tentatively priced at \$2,650 per person double occupancy, this trip includes roundtrip airfare from Kansas City, seven nights superior first class hotel accommodations, 16 meals and sightseeing. Details are tentative and subject to change.

For more information, visit www.washburn.edu/alumni or contact Susie Hoffmann at susie@washburn.edu.

Ichabods play Rebels in Vegas

Cheer the Ichabods on Nov. 11 when they play the University of Nevada-Las Vegas Rebels. The Alumni Association will host a complimentary fan appreciation reception following the game. If you plan to attend the reception, please RSVP to susie@washburn.edu.

Alumni Association Board of Directors 2008-2009

President

Ann Adrian, b ed '67

Vice President

Roger VanHoozer, ba '72

Board Members

Kirsten Allen, ba '88

Richard Barta, ba '86

Dennis Bohm, bba '04

Jami Bond, bba '04

Stacey Calhoon, ba '89

Tara K. Cunningham, ba '00

Amy Garton, ba '03

Ray Killam, bba '70

William Marshall, ba '61

Erin Menard, bba '05

Dave Moore, bba '70

Cindy Rogers, ba '69

Jim Sloan, ba '50 and jd '52

Leo Taylor, ba '74



Breakfast Lecture Series set for 2008-09

To register for the Homecoming weekend Wake Up lecture Oct. 9, see page 29.



A first-hand account of the trial of Saddam Hussein is among the topics of alumni scheduled as speakers in the 2008-09 Wake Up with Washburn Breakfast Lecture Series sponsored by the Washburn Alumni Association and School of Business.

Kevin Sweeney, ba '71 and bba '71, Southlake, Texas, kicked off the series Aug. 28 with "Pressure Cooker Confidence: How to Lead When the Pressure is On." A combat pilot in both Vietnam and Iraq, Sweeney is the only person to successfully land a KC-135 after two engines on his left wing came off while in flight at night during a combat mission in Desert Storm. He retired from the Air National Guard at the rank of lieutenant colonel and is now a speaker, consultant and author.

Upcoming breakfast dates and speakers



Oct. 9:
William Marshall, ba '61, Colorado Springs, Colo., "Challenger Learning Centers: Inspiring +

Exploring + Learning, It's Our Mission." Marshall serves at the Challenger Learning Center of Colorado as an adjunct flight director and is former director of the distance learning program, which provides simulated space missions to students in elementary through high schools via Internet. A Vietnam veteran, Marshall retired from the Navy at the rank of captain after serving 33 years as an intelligence officer.



Feb. 26, 2009:
Richard Kline, bba '82, Leawood, Kan., "A Vital Link in Health Care Delivery at the Speed of

Life." Kline is one of three principal owners of KRC Enterprises LLC. Under the trade name of Guardian Medical Logistics, the company executes mission critical ground and air patient specimen logistic services on behalf of the leading national, regional and hospital based laboratories in 44 states. In his operating capacity with the company, Kline is responsible for all financial management, risk management, human resource and regulatory compliance aspects of the business.



April 16, 2009:
Tom Luedke, ba '83 and jd '86, Topeka, "The Iraqi High Tribunal and the Trial of Saddam Hussein."

Luedke, an Assistant U.S. Attorney in the civil division of the Topeka office, worked 2005-07 in Baghdad, Iraq, as attorney/adviser and as deputy to the Iraqi High Tribunal in the regime crimes liaison office. He assisted prosecutors with evidentiary and legal issues during the initial trial of Saddam Hussein, and for six months in 2007, assisted the Tribunal in becoming a fully functioning and independent court in all aspects of its operation.

Alumni Association awards 50 scholarships

Fifty Washburn students will receive \$22,750 in scholarships from the Washburn Alumni Association.

Students receiving scholarships from Topeka include Wendy Armstrong, senior, technology administration; Jacob Bailey, freshman, forensic chemical science; Josh Benteman, senior, music education; Patricia Bird, senior, history; Kristin Bradford, senior, nursing; Loretta Brooks, sophomore, accounting; Shawna Cassen, junior, accounting; Beverly Cushinberry, junior, legal studies; Marcela Fernandez, sophomore, undeclared; Maxwell Frederickson, senior, theatre; Courtney Hug, senior, law enforcement; Steven James, senior, nursing; Joshua Lehman, senior, mass media; Breanna Lewis, freshman,

undeclared; Heather Lewis, senior, mathematics education; Jayme Hanrahan, junior, general business; Lindsay Heil, junior, accounting; Amanda Huguenin, junior, law enforcement; Carolyn Martin, graduate student, psychology; Ryan Rutschmann, junior, English; Sherrita Smith-Camp, senior, history; Theresa Staudinger, second year law; Allison Stone, sophomore, undeclared; Sharon Tabor, graduate student, social work; Kimberli Talcott, sophomore, undeclared; Errin Thompson, junior, philosophy; Amanda Walter, senior, marketing; Chelsea Walter, junior, accounting; Margaret Walter, junior, general business; and Stephen Young, senior, political science.

Other Kansans receiving scholarships are Hayley Barnes, Ozawkie, sophomore, elementary education; Regina Budden, St. Marys, freshman, mass media; Joleen Bacon, Tecumseh, senior, nursing; Andrea Chancey,

Satanta, senior, political science; James Cuevas, Auburn, junior, law enforcement; Carole Jontra, Rossville, senior, biology; Wesley Joy, Burlington, junior, sport management; Elizabeth Keeley, Great Bend, junior, physical education; Keeley Lambeth, Lenexa, junior, English; Megan Maes, Lyons, senior, general business; Karen Marsh, Waverly, senior, English; Amanda Navinsky, Valley Falls, sophomore, management; Asha Plattner, Sabetha, senior, exercise physiology; Stephen Smith, Lawrence, senior, radiologic technology; Rebecca Spalding, Kansas City, sophomore, nursing; Brittany Tracz, Olathe, sophomore, athletic training; and Amanda Vervaecke, Bonner Springs, junior, English.

Students living outside Kansas are David Clark, Bixby, Okla., freshman, undeclared; Jorge Delgado-Breuer, Asuncion, Paraguay, junior, accounting; and Luis Montanez, Bogota, Colombia, sophomore, undeclared.

Alumni Association welcomes new members to board of directors

Jami (Torske) Bond, bba '04, Gardner, Kan.



Bond is an account executive for Hospitality Management Systems in Lenexa, Kan. She previously worked with Network Direct Inc. and Payless ShoeSource Inc. At Washburn, she served as a Student Ambassador and was a member of the Student Alumni Association Board, the Washburn Dancing Blues, Finance Society, the School of Business Dean's Student Advisory Council and the United Way fundraising committee.

Tara (Kemp) Cunningham, ba '00, Surprise, Ariz.



Cunningham earned a master of science degree in administration-leadership from Central Michigan University in 2004 and is pursuing a doctorate of education from Arizona State University. She is director of academic services at the University of Arizona College of Medicine-Phoenix, in partnership with Arizona State University. She previously coordinated the online degree completion program at Washburn for six years. As a student, she was a member of Nonoso, Phi Kappa Delta debate and forensics honor society, Pi Sigma Alpha political science honor society, Dancing Blues, Washburn Student Government Association, Student Ambassadors and Campus Democrats.

Amy (Berry) Garton, ba '03, Olathe, Kan.



Garton is the marketing and information technology services manager for the Overland Park (Kan.) Convention and Visitors Bureau. She serves on committees for the Travel Industry Association of Kansas and the Kansas City Regional Destination Alliance, is a 2006 Leadership Olathe graduate, president of the

Clockwinders Optimist Club and is a member of the Olathe Junior Service League. While at Washburn, she was active in Alpha Phi sorority and served on the Washburn Student Government Association.

William Marshall, ba '61, Colorado Springs, Colo.



Marshall serves at the Challenger Learning Center of Colorado as an adjunct flight director and is former director of the distance learning program, which provides simulated space missions to students in elementary through high schools via Internet. A Vietnam veteran, he retired from the Navy at the rank of captain after serving 33 years as an intelligence officer. He worked on national reconnaissance satellite systems in space systems operations and taught math, statistics and data analysis. After retirement, he worked in the Landsat commercial satellite program. As a student at Washburn, he played basketball and baseball and joined Alpha Delta fraternity.

Erin Menard, bba '05, Topeka



Menard is vice president of finance and strategy at Kan-Seal, a fluid sealing products supplier. She previously worked as a financial analyst at Westar Energy Inc. She volunteers with Junior Achievement, was treasurer of Westar Foundation and served as an instructor at Washburn basketball camps. As a student, she played basketball four years and was a member of the 2005 Lady Blue's basketball NCAA D-II National Championship team. She was also president of Washburn Finance Society and a member of the student athlete advisory committee.

Scholarship 5K Fun Run/Walk

Date: Saturday, Sept. 27

Location: Bradbury Thompson
Alumni Center

Time: 7 a.m. registration
8:30 run/walk

Cost: \$10 walkers, \$15 runners,
children 12 and under are free
late registration (day of event):
\$15 walkers, \$20 runners

Here's your chance to help students further their education at Washburn. Join President Jerry Farley and participate in the Washburn Alumni Association's Family Day Scholarship Fun Run/Walk. Either run a 5K or enjoy a leisurely two-mile walk. Bring the entire family! One hundred percent of the proceeds from the Run/Walk benefit the Washburn Alumni Scholarship Fund, which has been providing scholarships since 1944. (See page 7 for this academic year's list of scholarship recipients.)

Want to help? The Alumni Association needs volunteers to assist with the event. Contact Stacey Vossen Calhoun at scalhoun@cox.net or Susie Hoffmann at (785) 670-1643 or e-mail susie@washburn.edu. All volunteers will receive a complimentary Fun Run T-shirt commemorating the event.

To register, visit www.washburn.edu/alumni or call (785) 670-1641.



the **WASHBURN** experience

LIVE
2008-2009

COME VISIT
WASHBURN



WASHBURN
UNIVERSITY™

www.washburn.edu

WASHBURN UNIVERSITY
BIANCHINO PAVILION

COME VISIT WASHBURN: *The best way to find out if Washburn is for you*

"My high school guidance counselor said, 'you'll know when you're in the right place.' The minute I stepped on the Washburn campus, I knew. It was a great feeling!"

— Amanda David, Leavenworth, Kan., sophomore in business

CONTACT FOR INFORMATION AND APPOINTMENTS:

WASHBURN ADMISSIONS: Morgan Hall 114 • 1700 College Ave. • Topeka, Kan., 66621
(800) 332-0291, ext. 1030 or (785) 670-1030
Web site: www.washburn.edu/admissions
E-mail: admissions@washburn.edu

OPPORTUNITIES TO SEE IF THE WASHBURN EXPERIENCE IS FOR YOU:

Oct. 25, Nov. 8 | **Ichabods at Night** (seniors only)

With a student host, enjoy a Saturday football game, see the campus and stay overnight in a residence hall or Greek house.

Oct. 31, Nov. 21 and Dec. 5 | **Ichabod Senior Days**

See the campus, visit with academic counselors and meet with faculty members.

Choose a day for an **individual visit**

Call the Washburn admissions office and schedule a campus tour, a half day, a full day or an overnight visit. They will be happy to customize your visit so you get the most out of it. Your own student guide will help you see and learn everything you need to know from a student's perspective.

July 13-15 | **Camp BLUE**

For students interested in business and entrepreneurship

July 15-17 | **Pre-legal Workshop**

For students interested in law careers

THE WASHBURN EXPERIENCE

Class size and faculty

- Undergraduate classes with fewer than 20 students: 47%
- Student/faculty ratio: 16:1
- Full-time faculty with doctorates or the highest degree in their discipline: 84%

WASHBURN TRANSFORMATIONAL EXPERIENCE

Every student is given the opportunity to choose one of four transformational experiences prior to graduation: scholarly or creative activity; community service; leadership; or international education.

FEB. 15, 2009 is the deadline for financial aid and scholarship applications



1700 SW College • Topeka, Kansas 66621

ADMISSIONS: (785) 670-1030 or (800) 332-0291, ext. 1030

www.washburn.edu



College fairs

Representatives from colleges and universities across Kansas hold college fairs in the fall. Encourage potential students you know to stop by the Washburn booth and find out what Washburn has to offer. Advise them to check with their high school counselor for details.

Sept. 29 - Oct. 8

Northwestern and southwestern

Kansas: Garden City, Hutchinson, Great Bend, Russell, Hays, West Smith Co., Norton, Dodge City, Scott Community, Seward Co., Ulysses, Pratt

Oct. 9 - 22

Northeastern and southeastern

Kansas: Topeka (Expocentre, 1 - 3:30 p.m. Oct. 9), Osawatomie, Olathe, Highland, Atchison, Kansas City (Kansas City Kansas Community College, 7 - 8:30 p.m., Oct. 14), Shawnee Mission, Manhattan, Oskaloosa, Lawrence, Pittsburg, Independence, Emporia, Ottawa, Leavenworth

Oct. 27 - 28

North central Kansas:

Marysville, Cloud Co., Salina, Chapman, Junction City

Nov. 3 - 5

South central Kansas:

Winfield, McPherson, Wichita (Century II Performing Arts and Convention Center, 9 a.m. - 2:30 p.m., Nov. 4), Newton, Butler Co.

Bringing students to Washburn

This is an exciting time to be a Washburn student, but it is also a time of heightened competition for students among colleges and universities. Washburn alumni and friends can make a difference.

► **Help** personalize the college decision by encouraging potential students to talk about themselves and their interests. Encourage them to ask you any questions they may have about Washburn. They may feel more comfortable speaking to you than a member of the admissions staff.

► **Convey** a positive impression about Washburn and encourage potential students to visit the campus. Invite those interested in careers in law or business to attend Camp Blue or the Pre-legal Workshop in the summer.

► **Give** out copies of the front and back of pages 9 - 10 (or download from washburn.edu/alumni) to potential students you know.

► **Encourage** prospective students to contact Washburn's admissions office at (800) 332-0291, (785) 670-1030 or send their names and contact information to Kirk Haskins, director, admissions, kirk.haskins@washburn.edu.

► **Advise** them to look for Washburn at their high school college fair.

► **Tell** them to ask about scholarship opportunities.

The *Garvey Competitive Scholarship* is one of many scholarships unique to Washburn. Awards are based on a comprehensive examination.

Garvey Exam

Nov. 22

Topeka, Henderson Learning Resources Center, 9 a.m.

Dec. 6

Hays, Kan., Sternberg Museum, 9 a.m.

Dec. 10

Topeka, Henderson Learning Resources Center, 6 p.m.

► **Inform** them about out-of state tuition waivers.

Legacies

Children of Washburn alumni who live outside Kansas are eligible to receive in-state tuition for the first six months of attendance, after which they are expected to establish Kansas residency. Prospective students should contact the admissions office for full details.

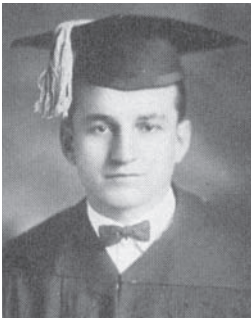
Kansas City, Mo., area residents

Persons living in the Missouri counties of Andrew, Bates, Buchanan, Cass, Clay, Jackson, Holt and Platte with a cumulative 3.0 or higher high school grade point average may be awarded the in-state tuition rate.

► **Contact** or collaborate with the nearly 1,000 Washburn alumni who are teachers and encourage them to recommend outstanding students.



WASHBURN ENDOWMENT



Duffie A. Hindman,
from 1924 Kaw yearbook

Hindman Scholarship has impact on western Kansas students

Often the impact of a single endowed scholarship is more far-reaching than one could ever imagine. Such is the case with the Hindman Scholarship, created by the estate of Duffie A. Hindman, jd '24, Stockton, Kan.

This endowed fund was created in 1989 as part of an estate gift from Hindman and is designed to support Washburn students from Rooks County, which is located in northwest Kansas, approximately 40 miles north of Hays, Kan. During the past two years alone, nearly \$300,000 has been awarded to 85 students.

One of the first recipients of the scholarship was Niki McDowell, bba '92, Tulsa, Okla. Originally from Stockton, McDowell said she vividly remembers the reaction of her parents when they found out she was awarded the scholarship.

"I remember the 'life-saving' reaction from my parents when we found out I was going to receive the Hindman Scholarship," McDowell said. "A huge burden was lifted from their shoulders. It was a life-changing event for me because I might not have ended up at Washburn any other way."

Niki's brother, Wade McDowell, bba '98, Hill City, Kan., also received a Hindman Scholarship, as did several others from Stockton, their home town. Lance Latham, ba '92, Coppel, Texas, was also among the first.

"(The scholarship) opened a lot of people's eyes, not only to Washburn, but just going to college," Latham said. "There are some who received the scholarship who might not have otherwise gone to college."

Latham said he had originally thought of attending the University of Kansas but decided on Washburn because of the scholarship.

"The scholarship actually made me consider Washburn," he said. "Looking back, that was the best choice I could have made. The opportunities of going to school in Topeka were tremendous and offered great exposure to the political arena."

After getting his degree in political science, Latham worked in the political arena, including a stint with Sen. Bob Dole's presidential

campaign in 1995-96. He says coming to Washburn offered opportunities that would not have been available elsewhere.

McDowell said while she was in high school, she knew several other people — including family members — who attended the University of Kansas or Kansas State University, and she

*"(The scholarship)
opened a lot of
people's eyes,
not only to
Washburn,
but just going
to college."*

Lance Latham,
'92 ba, Coppel, Texas

was thinking of doing the same.

“Washburn wasn’t even on the radar until I received the Hindman Scholarship,” she said.

She recalled how her grandfather, the late Jack Berkely, had gone to the University of Kansas and hoped Niki would go there, too. When she received the Hindman Scholarship, her grandfather said he would match that scholarship if Niki would attend KU, but she chose Washburn. She said her grandfather would give her a hard time about not going to KU, but he always realized she made the right choice and received a quality education from Washburn.

“He was friends with guys like (the late) Chuck Ostmeyer (ba ’82, Endowment Association trustee 1988-93, 1984 Washburn Athletics Hall of Fame) who was a Washburn grad,” she recalled. “My grandfather always knew Washburn was a well-respected, quality school.”

Niki McDowell, bba ’92, Tulsa, Okla., and Lance Latham, ba ’92, Coppell, Texas were among the first recipients of the Hindman Scholarship.

Once she became an Ichabod, McDowell realized the connection with Washburn and Rooks County was a strong one.

Hindman practiced law in Rooks County for nearly 60 years, and upon his death in 1987, he willed to Washburn stocks, bonds, real estate, and oil and gas properties valued at more than \$3 million. Friends of Hindman said he loved the university and remembered his years at Washburn as among the best of his life.

“I really didn’t know Duffie Hindman,” McDowell said. “We just knew him as the ‘wealthy attorney,’ but his gift has meant so much to so many people from Rooks County. I couldn’t think of a more worthy cause to make a gift like this. It was so unselfish of him.

“There are some truly great Ichabods from Rooks County,” she added. “We all are so appreciative of the scholarship and know we were given such a great opportunity to attend Washburn because of his generosity.”



WU and WEA receive Circle of Excellence award

Washburn and the Washburn Endowment Association received the prestigious 2008 CASE-WealthEngine Award for Educational Fundraising, a component of the Council for the Advancement and Support of Education Circle of Excellence program.

This year, 37 four-year institutions across the nation were recognized for overall fundraising performance from a field of 973 higher education institutions eligible for consideration.

“We were surprised and very pleased to receive notification of this award,” said Washburn President Jerry B. Farley. “We have a great fundraising program, but more importantly, wonderful and generous donors. This honor confirms both.”

Headquartered in Washington, D.C., with offices in London and Singapore, the Council for Advancement and Support of Education is the professional organization for advancement professionals at all levels who work in alumni relations, communications, fundraising, marketing and other areas.





Gift honors mother

Oren Glatt, ba '52, Abilene, Kan., vividly remembers how difficult it was for his mother to single-bandedly raise six children during the Great Depression.

"She was widowed in 1937," he recalled. "She still had a mortgage on the farm and six kids to raise, but she kept going."

Glatt, who was nine years old when his father died, had four brothers and one sister. Even though he was young, he and his siblings knew they had to pitch in and help their mother around the farm. But his mother was the glue that kept the family together.

He said some people told his mother she would not be able to raise all six children and suggested that she send them to orphanages. But she would have nothing to do with that and worked hard to raise her family on her own.

In honor of his mother, Zelpha Miller Glatt, and to help make life a little easier

for other single mothers, Glatt donated \$100,000 to establish two scholarships. Zelpha Miller Glatt died in 1966 at the age of 62.

"I thought our mother did a wonderful job raising me and my brothers and sister," Glatt said.

"I wanted to honor her by establishing these scholarships."

"She never did push us, but would always suggest that we should get a college degree," he added.

The Zelpha Miller Glatt Family Scholarship will be awarded to students based on need with a preference given to students from Dickinson County, Kan. The other scholarship, the Zelpha Miller Glatt Family Washburn Women's Alliance

Scholarship, is awarded to non-traditional female students.

WWA raises funds to award scholarships so single-parent female students can fulfill their goals of achieving a college education.

Oren Glatt retired as president of Long Investment Co. Inc. in 2004.

Heather Prichard, Topeka, senior, social work, stands with Oren Glatt, ba '52, Abilene, Kan., after receiving the Zelpha Miller Glatt Family WWA Scholarship in April.



Mayo Schmidt, bba '80

Executive in Residence

Mayo Schmidt, bba '80, Regina, Saskatchewan, Canada, will be honored as the Oscar S. Stauffer Executive in Residence Sept. 25-26. Schmidt is president and chief executive officer of Viterra, a leading global agri-business company headquartered in Canada. He is also a trustee of the Washburn Endowment Association.

The Executive in Residence program provides opportunities for Washburn students, faculty, staff and business and community leaders to interact in formal and informal settings with distinguished business executives.

Schmidt, a 2003 Alumni Fellow, serves on the School of Business applied portfolio management advisory board and the Washburn Endowment Association board of trustees. He also provides internships to Washburn business students, supports a business scholarship and provided funding for the football complex renovation project and the Business Technology Center in Henderson Learning Resources Center.





WEA adds trustees and directors

In-Kind Gifts important to Washburn

When considering ways to give to Washburn, people may think of cash, stocks/securities, real estate or life insurance. But in-kind gifts can also be important if they meet a specific campus need.

Carol (McGinnis) Emert, bfa '84, curator of collections and exhibitions at Mulvane Art Museum, said several recent in-kind donations of artwork have been important additions to the museum's collection.

"It is always wonderful to receive in-kind donations, especially if they have Kansas connections," she said.

One example of those in-kind connections came from Topekans Larry Peters, bfa '62, and Barbara Waterman-Peters, bfa '73, who recently donated "Sculpture Study-Three Angels" (1984), a drawing by Robert A. Nelson, and "Map: The Fifth-Third View" (1987), a drawing by Waterman-Peters.

"Larry and I both have a long history with Washburn," said Waterman-Peters. "We both have degrees in fine arts. I remember going there in the summer as a child and taking art classes. Mulvane is a crown jewel, not only for Washburn, but for Topeka.

Anderson Chandler, honorary doctorate '08, and Edith Chandler, Topeka, have been long-time supporters of Washburn. One of their most recent gifts is a Mason & Hamlin baby grand piano for the music department.



Anderson Chandler said his four daughters learned to play on the piano, and it feels good to know the instrument will be used by students and faculty who can appreciate the quality of the instrument.

"The piano had been in our family for over 35 years," he said. "There is a more personal feeling with an in-kind gift. It is a physical item and we can remember how it sounded when our daughters played."

"It's an enormous benefit to our department to receive a gift of that quality and worth," said Ann Marie Snook, chairwoman and associate professor, music. "It's just indescribable. Not only is it a very high-quality instrument, it is a beautiful piece."

Snook said the "number one goal" of the Friends of Washburn Music is to address the need for quality pianos within the music department. She said repairing and restoring a grand piano like the one used in White Concert Hall can cost as much as \$35,000.

All in-kind gifts must meet a specific need at Washburn and be pre-approved. For more information about making an in-kind gift, contact Washburn Endowment Association at (785) 670-4483.

Seven new members joined the Washburn Endowment Association board of trustees, and nine trustees were appointed to four-year terms on the board of directors.

The board of trustees is comprised of some of Washburn's most talented and respected donors and leaders. Trustees represent Washburn and WEA by serving as ambassadors, building enthusiasm for the university and its programs, encouraging contributions and recruiting and electing new trustees and board members, advisers and supporters.

Those elected to the board of trustees:

- Randy Clayton, ba '88
- Bruce Cochener
- Dave Fenley, bba '76 and jd '79
- Bob Holmes, bba '78
- Laura Ice, jd '84
- Phil Pennington, jd '84
- Mayo Schmidt, bba '80

The board of directors is responsible for implementing the strategic mission of WEA and for the oversight and establishment of policies.

New members of the board of directors:

- Glenda Cafer, bba '83
- Dean Ferrell, ba '69
- Bill Greiner, bba '80
- Lonnie Hossfeld, bba '80
- Chuck Lower
- Terry Marshall, bba '63
- Nancy Paul, bba '76
- Jim Roth, jd '66
- John Stauffer

Whiting Field House renovation

A \$7 million renovation of Whiting Field House got under way in June. The outside will remain the same, but the inside will be turned into a state-of-the-art facility with a new weight room, practice courts, offices, classrooms and an entry that will house the Washburn Athletics Hall of Fame and trophy cases.

The shadow line along the wall in the southeast corner marks the top of the old wooden bleachers.



photos by Gene Cassell

With the tin covering already removed, the last of the "Big Blue Wall" that covered the stage on the south end of the basketball court comes down.

The entire project, which is expected to take 19 months, also includes upgrading locker rooms in Petro Allied Health Center and the football locker room in Whiting. The locker rooms will be finished in August 2009, and the field house will be completed in January 2010.

“This is another major piece of our renovation plans of athletic facilities,” said Loren Ferré, director, athletics. Since he arrived at Washburn in 1996, Ferré has seen a new soccer field built, renovations to softball facilities, tennis courts, Lee Arena, Falley Field and the construction of Yager Stadium at Moore Bowl followed by new field turf and a track.



Inside the future weight facility, orange fencing shows footings for the columns that will support the new gym floor that will be built above it.

New weight room

The most ambitious project inside Whiting is a 9,258 square foot weight and conditioning room on the second floor that replaces the old basketball court. Ferré said this facility will impact all of Washburn’s student athletes.

Tim Collins, head soccer coach, and Chris Herron, head volleyball coach, said the greater variety of weight training and conditioning equipment available in the new weight room will meet the needs of their players, allowing them to train differently and better.

David Trupp, strength and conditioning coordinator, said the weight room will primarily provide the kind of weights that are used in Olympic events, but will also include dumbbells and vertimax jump training platforms, which use bungee cords for sprint work, running in place and knee lifts.

The old weight room, located in the lower level of the field house, could



The old north entrance to the field house will become a new glass stair tower and elevator to the upper levels.

accommodate at most 40 players at one time, but the new facility will be large enough for the entire 100-man football team to work out together and still accommodate additional teams.

The large size of the facility eliminates the tight scheduling that was required in the past. This will also provide an academic benefit to athletes who will be able to take classes that may not previously have fit into their schedules.

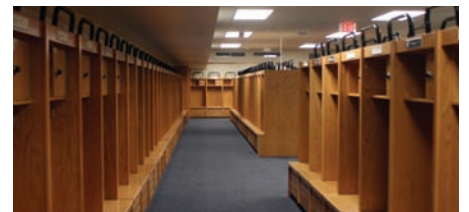
Offices and practice courts

A second floor mezzanine will be created from the upper level bleacher area and will include an 80-seat classroom, two seminar rooms and 20 faculty offices that will be shared by the health, physical education and exercise science department, and the School of Nursing. Above that, a third floor will be added for volleyball and basketball practice courts and academic activity classes. And above that will be a third floor mezzanine area intended for future expansion of offices and/or classrooms.

Built in 1928 without cooling units, the entire field house will be air conditioned and fitted with fire sprinklers and new windows. An elevator will make all levels accessible.

Locker rooms

Football players arriving in August found their locker room, located in the field house’s lower level, newly furnished with college pro-style wooden lockers.



“It is something the incoming players can be proud of,” said head football coach Craig Schurig. “It had the same lockers, carpet and fixtures for the past 25 to 30 years, so it was due for a facelift.”

The same facelift is planned for the locker rooms the athletes have been using in Petro. Additionally, the men’s and women’s physical education locker rooms will be renovated for use by athletes, giving each team its own locker room. Previously, women’s basketball, volleyball and soccer shared one locker room, while on the men’s side, baseball and basketball shared a locker room.

photo by Peggy Clark

(L to R): Doug Glenn, bba '77, Topeka, the Topeka USD 501 board chairman, turns over a ceremonial key to Bob Storey, bba '61 and jd '63, Topeka, Washburn Board of Regents chairman.

Kaw Area Technical School affiliates with Washburn



The affiliation of Kaw Area Technical School with Washburn was signified with the passing of a ceremonial key. Effective July 1, the management of Kaw shifted from Topeka Unified School District 501 Board of Education. Kaw is now operated as a unit administered by Washburn and governed by the Washburn Board of Regents.

As noted in a transition plan in place since late 2007, Washburn will continue all vocational education curricula in place at Kaw. Washburn is leasing the real property in and on which Kaw Area Technical School is located, acquired right and title to all Kaw personal property and assumed all rights and duties of USD 501 contracts related to Kaw.

Kaw will continue as the managing partner based on existing vocational education agreements with a 17-county consortium of unified school districts. Consortium members are the districts of Auburn-Washburn, Burlingame, Holton, Jefferson County North, Jefferson County West, Kaw Valley, Mayetta, McLouth,

North Jackson, Oskaloosa, Perry-Lecompton, Santa Fe Trail, Seaman, Shawnee Heights, Silver Lake, Topeka and Valley Falls.

The transfer of governance of Kaw was required by House Bill 2556, which stipulated technical schools to separate from their school districts and either merge or affiliate with a four-year post-secondary education institution in Kansas or become an accredited technical college with an independent governing board. In May 2007, the Kansas Board of Regents adopted a recommendation requiring all technical schools have a final plan in place by July 1, 2008, and all technical schools become merged or fully-accredited, independent technical colleges by July 1, 2009.

For approximately 15 years, Washburn and Kaw have collaborated to offer an associate of applied science degree based on hours earned at both schools. Approximately 150 students are involved in that program.



Bob Storey, bba '61 and jd '63



Ben Blair, jd '65



Jim Roth, jd '66



Blanche (Williams) Parks, b ed '71 and m ed '76

Washburn Board of Regents

Members of the Washburn Board of Regents re-elected Topekans Bob Storey, bba '61 and jd '63 as chairman, and Ben Blair, jd '65, as vice chairman for the 2008-09 fiscal year.

Jim Roth, jd '66, Wichita, Kan., was reappointed to the Board by Gov. Kathleen Sebelius. Roth, who was initially appointed to the Board in 1992 by the late Gov. Joan Finney, was reappointed in 1996 by former Gov. Bill Graves and in 2004 by Gov. Sebelius. Roth is a partner at the law firm of Woodard, Hernandez, Roth and Day.

Blanche (Williams) Parks, b ed '71 and m ed '76, Topeka was reappointed to the Board by Topeka Mayor Bill Bunten. Parks was originally appointed to the Washburn Board by the late Mayor Butch Felker in 1993 and reappointed by former Mayor James McClinton in 2004. She is employed by the State Department on Aging.



U.S. News and World Report ranks Washburn in regional top for ninth consecutive year

For the ninth consecutive year, Washburn earned a top 10 rating in the 2009 America's Best Colleges rankings released in August by U.S. News and World Report.

Washburn University was rated seventh in the Midwest among public master's level universities. Master's level institutions are those which offer a full range of undergraduate and master's level programs, but few, if any doctoral programs.

Washburn ranked in the top quarter (first tier) of public and private master's level institutions in the Midwest, ranking 35th out of 146. Of the 146 Midwestern schools compared in the ranking, 52 are public universities and 94 are private. Washburn ranked seventh among the 52 public universities.

Washburn ranked higher than any other similar public institution (master's level) in Kansas and is the only Kansas institution in the top quarter.

Benedictine College (Atchison) was the only Kansas institution ranking in the second quarter or tier. Ranking in the third quarter or tier were Emporia State University, Pittsburg State University and Southwestern College (Winfield).

In the Midwest region, among the public universities ranked in the top 10 are Truman State University, Kirksville, Mo.; University of Northern Iowa, Cedar Falls (tied for 2nd); University of Wisconsin, La Crosse (tied for 2nd);

University of Illinois, Springfield (tied for 4th); University of Wisconsin, Eau Claire (tied for 4th); University of Michigan, Dearborn; Washburn University; and Grand Valley State University, Allendale, Mich.

Factors on which rankings are based include freshman retention, graduation rate, class size, student to faculty ratio, quality of student, a peer assessment and alumni giving.

The complete listing of the U.S. News and World Report 2009 America's Best Colleges rankings can be viewed at www.usnews.com.

Ichabod & Lady Blues Sports *By Gene Cassell and Jeremy Wangler*

Soccer

The Lady Blues soccer team returns 18 letter winners and all 11 starters from last season's squad which reached the MIAA Postseason Tournament and narrowly missed the NCAA Regional Playoffs after going 10-6-5 overall with an 8-2-4 mark.

Leading the returners is two-time MIAA most valuable player Jessica Mainz, Topeka, who enters her senior season as the all-time leading scorer in Washburn history and the No. 3 all-time scorer in MIAA history. Setting the tone for the defense will be fellow MIAA first team selection in senior Lisa Fahey, Parkville, Mo., who scored six goals from a back position.

Jessica Mainz



Brandon Walker

Football

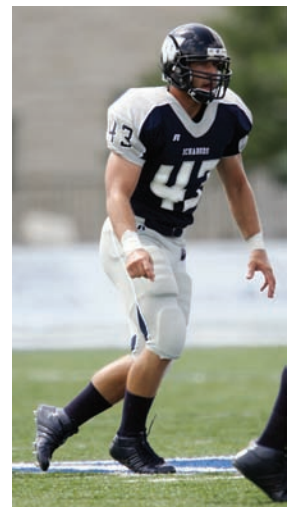
The drive for five

It has been more than 100 years (1903-07) since the Ichabod football program rolled off five straight seasons of winning football.

Coming off their fourth winning season in a row, the Ichabods find themselves entering the 2008 season with a solid mixture of returning lettermen and youthful depth.

"We feel our program is to the point where we can continue to build on success from the previous seasons with outstanding veteran players and the influx of new talent," said Craig Schurig, head football coach. "Winning creates winning, and that is what our coaching staff and players have been striving for — to continue to improve each season."

The Ichabods opened the season by taking on Colorado School of Mines and Missouri State University, a Football Sub-Championships Series opponent. They began the MIAA slate Sept. 13 at Fort Hays State University.



Zach Watkins



Monica Miesner

Volleyball

After finishing the season ranked No. 3 last year, the Lady Blues earned the No. 2 national ranking in the CBS College Sports Network/AVCA national preseason poll. Two All-Americans return to a team that went 38-4 last year after hosting the national tournament and advancing to the semifinal.

Two-time All-American senior Monica Miesner, Florissant, Mo., returns to the outside hitter spot while junior setter Kate Hampson, Fort Collins, Colo., is back after earning her first All-America honor last year. Other seniors returning for their final season include all-MIAA middle hitter Stephanie Nitz, Moline, Ill., defensive specialist Stephanie Holub, Overland Park, Kan., and setter Carolyn Raynes, Lawrence, Kan.

Hampson will enter the year 715 assists away from first in career assists after she has totaled 3,200 in her first two years. Miesner, already a member of the 1,000 kills/1,000 digs club, needs 228 digs to move into second all-time and 503 kills to move to first.



Kate Hampson



Paul Byers

Basketball exhibition games set

Before officially getting the season underway, the Ichabods will play three NCAA Division I schools in exhibitions. Washburn will play the University of Kansas at 7 p.m. Nov. 4 in Allen Fieldhouse and then play Kansas State University Nov. 9 in Bramlage Coliseum. The Ichabods will complete the exhibition schedule Nov. 11 at the University of Nevada-Las Vegas. Times for the K-State and UNLV games will be announced.

The Lady Blues will also take on the Jayhawks and Wildcats. They will start their exhibition schedule Nov. 2 at Kansas State University and then play at the University of Kansas on Nov. 9. Their first regular season home game is Nov. 19 against the



Karla Tailele

University of Missouri-St. Louis in a WBCA Pink Zone™ game. The athletic department, along with other campus organizations, will be promoting breast cancer awareness during the game. The WBCA Pink Zone™ initiative is a global, unified effort for the Women's Basketball Coaches Association's nation of coaches to assist in raising breast cancer awareness on the court, across campuses, in communities and beyond.

2008-09 Athletics Hall of Fame

Three new additions to the Washburn Athletics Hall of Fame will be honored Oct. 25 at halftime during the Washburn vs. Northwest Missouri State University football game. The members of this year's class, which represent football and women's basketball and tennis, join 115 previous honorees.



Nikki Olberding, ba '98, Tucson, Ariz., played basketball 1994-98. She finished her career as a 1998 All-American after scoring 498 points her senior year. She averaged 16.2 points per game for her career and started 107 of 112 games. Her career total of 1,811 is third on Washburn's all-time chart. Olberding was also a three-time, first team all-MIAA pick. She is second on the all-time Washburn chart with 384 free throws made and percentage (.831). Her .876 free throw percentage as a senior is the best mark in school history, as she hit 141 of 161, including an MIAA record

of 36 straight. She was also a two-time all-MIAA Academic team member. As a freshman, she was named the MIAA's Newcomer of the Year. As a senior, she was the winner of the MIAA's Ken B. Jones award for the outstanding women's student athlete of the year.



Jennifer (Subbert) Hastert, bba '96, Topeka, played tennis 1991-93 and 1995-96 and served 2000-08 as head men's and women's tennis

coach. Hastert had a stellar Washburn career, finishing with three All-America awards and four MIAA championships. In her three campaigns at Washburn, she finished 64-9 in singles and 59-11 in doubles. Following her freshman season, she was named an NCAA Division II All-American and the Volvo Midwest Tennis Rookie of the Year. She finished her sophomore season in second at No. 1 singles and third at No. 1 doubles during the MIAA championship tournament and had her second All-America distinction.

After transferring to Drake University her junior season, she returned to Washburn for her senior year after sitting out a season. Hastert returned to win the

MIAA No. 1 singles and No. 1 doubles championships. During her playing career, she was ranked as high as No. 4 in the nation in singles and No. 7 in doubles. Her postseason awards include an NCAA Division II All-America honor, and she was a two-time MIAA player of the week.

As head coach, Hastert compiled a 280-128 overall record, going 115-77 with the Ichabods and 165-51 with the Lady Blues. She led the Ichabods and Lady Blues to 13 combined NCAA Regional Tournament appearances and four NCAA National Tournament appearances, with the men going three times and the women going once.



Don McGlenn, bba '75, Tecumseh, Kan., played football 1972-74. He was a two-year NAIA all-district 10 selection and

a three-time all-Great Plains selection and earned the Defensive MVP award at the 1974 Boot Hill Bowl in Dodge City, Kan., the Ichabods first-ever postseason game.

CLASS NOTES

'40s

ANNIVERSARIES

Marjorie (Clinton) Gildersleeve, ba '45, and Joseph Gildersleeve, Topeka, celebrated their 60th wedding anniversary in May.

Joseph Pollom, ba '49, and Darlene Pollom, Topeka, celebrated their 60th wedding anniversary in July.

'50s

Dick Puhr, ba '56, Independence, Mo., retired from The Examiner after 49 years as a sports reporter but continues to cover high school sports and write a weekly sports column.

Marianne Webb, b music '58, Carbondale, Ill., received the Edward A. Hansen Leadership Award from the American Guild of Organists.

ANNIVERSARIES

Bob Shaw, ba '58, and Jackie Shaw, Silver Lake, Kan., celebrated their 50th wedding anniversary in June.

Shirley (Williams) Wilson, ba '58, and Robert Wilson, Topeka, celebrated their 50th wedding anniversary in February.

'60s

W. Robert Alderson, jd '67, Topeka, received a Lifetime Achievement Award from the Transportation Lawyers Association.

Thomas Conklin, ba '64 and jd '68, Topeka, retired in July after serving 21 years as a Shawnee County (Kan.) District judge.

Delano Lewis, jd '63 and honorary doctorate '00, Mesilla, N.M., was elected to the American Institutes for Research board of directors.

Billie Jean Moore, b ed '66 and honorary doctorate '99, Fullerton, Calif., is a trainer with Drinon & Associates Inc., which offers business training in sales, management and customer service. Moore was inducted in the Washburn Athletics Hall of Fame and received a Distinguished Service Award from Washburn.

Gary Peer, ba '63, Stephenville, Texas, retired as provost/vice president for academic affairs at Tarleton State University after 40 years of service in higher education.

Philip Sieve, jd '67, Kansas City, Kan., was appointed a senior judge by the Kansas Supreme Court. He retired as chief judge of Wyandotte County (Kan.) District Court after 27 years of service.

Gail (Meyer) Zeller, ba '69, Kearney, Neb., is interim dean of student life at the University of Nebraska, Kearney.

ANNIVERSARY

Gary Peer, ba '63, and Beverly Peer, Stephenville, Texas, celebrated their 50th wedding anniversary in June.

BAR ASSOCIATION NEWS:

Kansas Bar Association

Four Washburn School of Law alumni are serving on the 2008-09 Kansas Bar Association board of governors:

- **Thomas Wright, jd '64 and ba '81**, Topeka, president
- **Glenn Braun, jd '81**, Hays, Kan., vice president
- **Benjamin Burgess, jd '72**, Wichita, Kan., secretary-treasurer
- **Linda Parks, ba '79 and jd '83**, Wichita, Kan., immediate past president

In June, nine Washburn School of Law alumni were recognized by the Kansas Bar Association for their contributions to the legal profession:

- **Alan Alderson, jd '74**, Topeka, Pro Bono Certificate of Achievement
- **Frederick Godderz, ba '66 and jd '69**, Burlingame, Kan., Pro Bono Certificate of Achievement
- **Carol Gilliam Green, jd '81**, Topeka, Distinguished Government Service Award
- **Natalie Haag, jd '85**, Topeka, Outstanding Service Award
- **Jennifer (Lopez) Hill, jd '03**, Wichita, Kan., Outstanding Young Lawyer
- **Scott Hill, jd '03 and mba '03**, Wichita, Kan., Outstanding Young Lawyer
- **Aaron McKee, jd '01**, Lenexa, Kan., Pro Bono Certificate of Achievement
- **Nancy Ogle, jd '91**, Wichita, Kan., Outstanding Service Award
- **Steven Schwarm, jd '87**, Topeka, Outstanding Service Award and Pro Bono Award

Topeka Bar Association

The Topeka Bar Association presented awards and elected officers in April. Three Washburn School of Law alumni received awards:

- **Matthew Bergmann, ba '01 and jd '05**, Topeka, Outstanding Young Lawyer Award
- **Kay McFarland, ba '57 and jd '64**, Topeka, Warren W. Shaw Distinguished Service Award
- **J. Steven Pigg, ba '72 and jd '76**, Topeka, Honorable E. Newton Vickers Professionalism Award

Washburn School of Law alumni serving on the 2008-09 Topeka Bar Association board of directors:

- **Douglas Shima, jd '94**, Topeka, president
- **Teresa (Herdman) Watson, ba '91 and jd '94**, Topeka, immediate past president
- **Terry Beck, ba '72 and jd '75**, Topeka, president-elect
- **Larry Karns, jd '75**, Topeka, secretary
- **Chelsey (Weekly) Langland, jd '99**, Topeka, treasurer
- **Amanda Kiefer, jd '03**, Topeka, director
- **Michelle (Ashcraft) Miller, jd '01**, Lawrence, Kan., director
- **Jim Rankin, ba '73 and jd '76**, Topeka, director
- **Ardith Smith-Woertz, ba '83 and jd '87**, Topeka, director
- **Tom Stratton, jd '84**, Topeka, director
- **Thomas Wright, jd '64 and ba '81**, Topeka, director

CLASS NOTES

PROFILE: Ricky and Randy Mills



(L to R): Twin brothers **Ricky Mills, bs '82** and **Randy Mills, bs '82**, Topeka, both retired in June from the Topeka Police Department after 29 years of service – and careers that parallel one another across the years.

By the time the Mills brothers entered high school, they had chosen careers in law enforcement. They were active in a Boy Scouts Explorer post hosted by the Topeka Police Department at Topeka West High School, and after graduating in 1976, entered Washburn and majored in criminal justice. In May 1979, they earned associate degrees, joined the Topeka Police Department and in January 1980, graduated from the department's training academy. Both men worked full time as police officers while finishing their last two years at Washburn.

Randy and Ricky served about half of their careers as detectives in the criminal investigation division. Randy worked in homicides and said he received a sense of accomplishment and justice when cases he worked resulted in hefty sentences. Ricky worked with financial crimes like forgery and fraud. He said he enjoyed working with local businesses and banks and presenting seminars on these topics.

And both Mills brothers have children who became Ichabods. Ricky's daughter, Jessica Mills, Topeka, earned a bachelor of arts degree in 2007, and Randy's son, Ian Mills, aas '07, Topeka, is a senior majoring in law enforcement and criminal justice.

'70s

Myrene (James) Bears, b ed '77, and bba '82, Topeka, retired as a public service executive with the Kansas Department of Administration.

Russell Blackbird, b ed '73 and ma '84, Lawrence, Kan., is dean of the School of Education at Haskell Indian Nations University.

J. Michael Kennalley, jd '76, Wichita, Kan., is president-elect of the Wichita Bar Association.

Janice (Phillips) Magathan, bba '76, Topeka, retired as a public service executive with the Kansas Department of Administration.

Ron Marshall, bs '73, Topeka, is chief executive officer for Holton Community Hospital and Family Practice Associates.

Deidre (Swoboda) Michael, b ed '72, Silver Lake, Kan., retired after more than 36 years of teaching kindergarten in Silver Lake USD 372.

William Pitsenberger, jd '78, Topeka, retired from Blue Cross and Blue Shield of Kansas after 30 years as general counsel and senior vice president. He is now associated with the law firm of Newbery, Ungerer and Hickert.

David Rebein, ba '77, Dodge City, Kan., was elected to a three-year term on the Kansas Humanities Council board of directors.

William Rein, ba '74 and jd '77, Topeka, joined the law firm of Scott, Quinlan, Willard, Barnes and Keeshen LLC.

Randy Schrick, bs '73, Atchison, Kan., is vice president of engineering and corporate director of manufacturing for the distillery products business segment at MGP Ingredients Inc.

Kirke Snyder, jd '74, Houston, Texas, was appointed a partner with HSNO Franklin Data LLC, which is a part of Hagen, Streiff, Newton & Oshiro Accountants PC.

Sandy (Hassett) Worden, b ed '73, Norton, Kan., retired from Norton USD 211 after 29 years of teaching.

Carol (Martin) Yoho, bfa '71, Topeka, received the 2008 Vanguard Award and the National Chapter Star Award from the Topeka chapter of the Association for Women in Communications.

ANNIVERSARY

Norman Hodge, m ed '78, and Jenny Hodge, Topeka, celebrated their 40th wedding anniversary in June.

'80s

Melinda (Hoyle) Bozarth, jd '83, Austin, Texas, was featured in *Texas Lawyer*, a weekly newspaper. Bozarth is general counsel for the Texas Department of Criminal Justice.

Steven Bradley, ba '85, Topeka, attained the designation of fraternal insurance counselor from the Fraternal Field Managers Association.

Alison (Lindsay) Brookins, jd '86, Andover, Kan., is an administrative law judge in the Wichita (Kan.) office of disability adjudication and review of the Social Security Administration.

Diane (Prior) DeBacker, m ed '87, Topeka, was appointed deputy commissioner of education to oversee the division of learning and innovative services of the Kansas State Department of Education.

David Debenham, jd '80, Topeka, was named a Shawnee County (Kan.) District Court Judge of the 3rd Judicial District by Gov. Kathleen Sebelius.

Russell Doty, ba '88, Berryton, Kan., was promoted to director of group sales at Blue Cross and Blue Shield of Kansas.

Scot Ferrell, bba '85, Castro Valley, Calif., was promoted to managing director by Marsh U.S.A.

Paul Goebel, ba '84, Ozawkie, Kan., was certified as a Leave No Trace Master Educator by the Boy Scouts of America.

Roger Noriega, ba '82, Washington, D.C., spoke at a conference hosted by the American Enterprise Institute for Public Policy Research, with which he is affiliated. Washburn honored Noriega as an Alumni Fellow in 2004.

Zoa Norman, ba '80, La Jolla, Calif., is vice president, sales, of the human resources outsourcing division of BPO Management Services.

Carrie Saia, bsn '89, Delia, Kan., is chief nursing officer at Holton Community Hospital and Family Practice Associates.

Ron Schneider, ba '88 and jd '92, Topeka, was elected president of Sunflower Soccer Association.

Barbara (Bunten) Shuck, ba '81, Waterloo, Neb., was named a fellow by the Society for Marketing Professional Services, in recognition of contributions to the Society and profession of marketing services in the architecture, engineering and construction industry.

Debra (Guiou) Stufflebean, bba '89, Topeka, was named director of Shepherd's Center of Topeka.

Carol (Hooper) Wheeler, bsn '83, Topeka, is a member of the board of Kansas Family Partnership Inc.

Beverly (Koch) White, bsn '81, Lakewood, Colo., is director of emergency and trauma services at Exemplar Lutheran Medical Center in Wheat Ridge, Colo.

WEDDING

Gina Gary, bsn '86, and Mark Robertson, Topeka, on Aug. 11, 2007. She is a psychiatric advanced practice nurse with Correct Care Solutions and Prison Health Services.

ANNIVERSARY

Eileen (Matzek) Davis, ba '86, and **Frank Davis, ba '70**, Topeka, celebrated their 50th wedding anniversary in June.

'90s

Patrick Birkbeck, ba '94, Topeka, was elected to the Denison State Bank board of directors.

Tim Blevins, ba '98, Mayetta, Kan., received the 2008 Federation of Tax Administrators Award for Leadership and Service, for service in the administration of state taxes. Blevins is head of information systems at the Kansas Department of Revenue.

David Bohm, ba '95 and jd '98, Cary, N.C., is assistant executive director of the North Carolina Bar Association.

Mark Bruce, mcj '98, Silver Lake, Kan., was promoted to major of the support services section for the Kansas Highway Patrol.

Lisa (Davidson) Carson, ba '95, Yankton, S.D., is marketing manager for Kolberg-Pioneer Inc. and Johnson Crushers International.

Randy Carver, aa '92, bs '94 and mcj '01, Topeka, retired from the Topeka Police Department at the rank of lieutenant after 29 years of service.

Ed Collazo, jd '97, Topeka, was elected president of Fox Ridge Cooperative Townhouse Inc. board of directors.

Roy Danks, ba '94, Holton, Kan., joined the surgical team at Community HealthCare Systems, which owns and operates health centers in five Kansas towns.

Michelle DeCicco, jd '94, Prairie Village, Kan., was appointed city judge pro-tem in Roeland Park, Kan.

Chelle (Dell) Decker, ba '97, Topeka, was elected to the board of the Association of Kansas Theatre.

Shannon (Portwood) Dunham, jd '98, Jerseyville, Ill., is counsel for the St. Louis (Mo.) office of Sherman & Howard LLC.

Janelle (Deghand) Feyh, ba '91, Topeka, opened a private practice in psychotherapy and testing.

Jim Gardner, ba '95, Topeka, is human resources manager at Valeo Behavioral Health Care.

Debra (Coalson) Goodrich, ba '96, Topeka, is the host of a talk show on KMAJ-AM 1440.

Amy (Robinson) Hendrickson, ba '93, Chanute, Kan., was elected to the Home Savings Bank board of directors.

Robert Jacobs, mcj '99, Wichita, Kan., received a Guardian of Justice Award from the office of U.S. Attorney Eric Melgren for his efforts in a capital murder case. Jacobs is a Kansas Bureau of Investigation agent.

Daniel Jaramillo, bs '98 and mcj '05, Topeka, is the author of "Fortitude: Without Acknowledgement," published in 2008 by Tate Publishing and Enterprises.

Brett Johnson, bs '96, Topeka, was promoted to lieutenant by the Kansas Highway Patrol.

Jason Neal, ba '95 and jd '98, Houston, Texas, is of counsel with Hoover Slovacek LLP.

Nathaniel Penney, bba '96, Topeka, received an Outstanding Leadership Award from Sheltered Living Inc.

Rochelle (Henry) Vale, bsn '95, Overland Park, Kan., graduated from Kansas City University of Medicine and Biosciences College of Osteopathic Medicine in May.

BIRTHS

David Bohm, ba '95 and jd '98, and Summer Bohm, Cary, N.C., a girl, Matalie Taegan, on March 31. She joins a brother, Maxton Parker, 2.

Anne (Johnson) Mead, ba '99, and **Jay Mead, ba '96**, Memphis, Tenn., a girl, Madeline Blu, on April 4.

'00s

Faron Barr, bba '03, Topeka, has qualified for the chartered life underwriter designation. Barr is a financial planner with T&M Financial Inc.

Starla Borg, jd '04, Concordia, Kan., has joined the law office of Condray & Thompson LLC.

Brian Casebeer, bba '01, Topeka, opened an additional Edward Jones office in Topeka. Casebeer is a financial adviser.

Erica Cowhick, b ed '07, Topeka, was named head volleyball coach at Seaman High School.

Tyler Darnell, jd '08, Manhattan, Kan., is an associate attorney with the law firm of Arthur-Green LLP.

Dustin Dean, ba '01, Topeka, received a Communicator Award of Distinction from the International Academy of the Visual Arts.

Janet Eubanks, bis '04, Concordia, Kan., is director of auxiliary services at Cloud County (Kan.) Community College.

James Fletcher, jd '06, Lee's Summit, Mo., joined the law firm of Martin, Leigh, Laws & Fritzen PC.

Tracey Geren, bba '06, Topeka, is an accountant at the Colmery-O'Neil Veterans Affairs Medical Center.

Carrie Greenwood, aas '03, Topeka, received a Topeka YWCA 2008 Women of Excellence Award in the special recognition category.

Angela (Holman) Haggard, bba '00 and mba '04, Topeka, was promoted to chief financial officer at Valeo Behavioral Health Care.

Jennifer (Nartowicz) Hays, jd '06, Topeka, is an associate with the law firm of Valentine and Zimmerman PA.

Cynthia Holt, bas '00, Topeka, was promoted to shift commander at the Topeka Fire Department.

TOPEKA'S TOP 20 RISING STARS

Eight Washburn alumni living in Topeka were named to Topeka's Top 20 Rising Stars by TK Magazine.

- **Brandon Decker, ba '06**, president, Pinnacle Gym LLC
- **Lena (Bronson) Hayden, ba '02**, owner, Nos Vemos Greetings
- **Amanda (Millard) Hughes, ba '00**, assistant director, university relations, Washburn
- **Mike Lesser, bs '93**, president, People's Insurance and Benefit Group
- **Ryan Mohwinkle, bba '03**, agency owner, State Farm Insurance
- **Fred Patton, bba '97**, attorney, Patton Law Office
- **Guy Richardson, bba '97**, agent/registered representative, New York Life
- **Grant Sourk, ba '01 and mls '05**, realtor, Kirk & Cobb Inc.

LEADERSHIP KANSAS

Four Washburn alumni were selected for the Leadership Kansas Class of 2008.

- **Daniel Foltz, mba '87**, Perry, Kan.
- **Stephen Funk, jd '78**, El Dorado, Kan.
- **Sunee Mickle, jd '06**, Lawrence, Kan.
- **Carol Perry, bsn '84**, Topeka

John Federico, jd '94, Topeka, is serving as executive director.

CLASS NOTES

Erik Klutman, jd '02, Columbus, Neb., joined the law firm of Sipple, Hansen, Emerson & Schumacher.

Jessica (Trigg) Mai, bis '04, Kansas City, Kan., received a doctor of optometry degree from the University of Missouri-St. Louis.

Erin (Wichman) Mohwinkle, ba '07, Topeka, is an agent advertising specialist at Aviva.

Michelle (Schmidtlein) Porubsky, b ed '07, Topeka, is teaching kindergarten for Topeka USD 501.

Matthew Schiffelbein, b music '01, Topeka, was ordained a deacon in the Roman Catholic Church. He is a third-year student at the University of St. Mary of the Lake/Mundelein (Ill.) Seminary.

Dani (McHenry) Schmidt, bba '05, Topeka, is assistant volleyball coach at Washburn.

Holly (Theobald) Smith, bs '02, Overland Park, Kan., received a Pro Bono Certificate of Achievement from the Kansas Bar Association.

Brian Spicer, bs '03, Bakersfield, Calif., earned a master of science degree in information technology from Capella University in December.

David Stivers, bs '04, Mission, Kan., completed a basic law enforcement course at the Kansas Highway Patrol training academy.

Andrew Strobl, ba '04, Overland Park, Kan., was ordained a deacon in the Roman Catholic Church. He is a third-year student at the University of St. Mary of the Lake/Mundelein (Ill.) Seminary.

Stephanie (Lockhart) Symns, ba '06, Atchison, Kan., joined MGP Ingredients Inc. as manager of communications services.

Lyn Weichert, bfa '05, Topeka, joined Jones Huyett Partners as client service specialist.

WEDDINGS

Amanda Connel, as '02 and bls '03, and Chad Lisher, Lawrence, Kan., on Dec. 1. She is a radiation therapist with Kansas City Cancer Center, Overland Park, Kan.

Samantha Cooper, ba '07, and Thaddaeus Gassie, Topeka, on April 13. She is a project director at Mainstream Inc.

Karen DeDonder, bs '05, and **James Garrison, bs '04 and jd '08**, Paxico, Kan., on June 21. She works at Tailored Injury Prevention Solutions in Topeka, and he is an assistant attorney for Riley County, Kan.

Brian Hall, ba '01, and Megan Randall, Topeka, on June 9, 2007.

Erika Kjorlie, bfa '01, and John Geery, Lawrence, Kan., on June 7. She is a freelance photographer and artist.

Amanda Millard, ba '00, and Michael Hughes, Topeka, on Feb. 9. She is assistant director, university relations at Washburn.

Ian Mills, aas '07, and Angela Morgan, Topeka, on June 7. He is pursuing a bachelor of science degree at Washburn.

Stacy Pinick, bba '02 and mba '06, and Bryce Canfield, Pasadena, Calif., on Oct. 6, 2007. She is an energy trader at Pasadena Power.

Heather Self, bfa '07, and **Chad Unrein, bba '04**, Topeka, on April 12.

Ashley Taylor, bsw '07, and **Justin Palmer, bs '00**, Lawrence, Kan., on Oct. 6. She is a resource family social worker with DCCA Inc., and he is a technology analyst at IMA Financial Group Inc.

Angela Zimmer, bsn '06, and Jeremy Rodecap, Perry, Kan., on April 12. She is a registered nurse at Stormont-Vail HealthCare.

ANNIVERSARY

Keen Umbehr, jd '05, and Eileen Umbehr, Alma, Kan., celebrated their 30th wedding anniversary in June.

BIRTH

Haley (Holloman) Murphy, b music '05, and **Ronnie Murphy, ba '04**, Topeka, a girl, Brecken Grace, on April 18.

IN MEMORY

'30s

Arthur Goldberg, bs '39 and jd '39, 91, Dallas, Texas, on July 1. An Army World War II veteran, he also served in the Army Reserves at the rank of first lieutenant. He was a founder of the law firm of Goldberg and Alexander, where he practiced 32 years. As a student at Washburn, he was a member of the International Relations Club and Phi Kappa Delta honorary forensic society. He was a lifetime member of the Washburn Alumni Association and a member of the Whiting Society, with his wife, Ruth Goldberg, who survives.

Louise (Noller) Hart, ba '35, 95, Rapid City, S.D., on July 13. She was a lifetime member of the Washburn Alumni Association and active in numerous community and school organizations. As a student, she was president of Panhellenic and Alpha Phi sorority and a member of Tau Delta Pi honorary scholastic society.

Frances (Anderson) Watson, ba '38, 90, Topeka, on May 14. She was a member of Silver Lake (Kan.) United Methodist Church and Order of the Eastern Star. At Washburn, she was a member of French Club, Citizens Council and Tau Delta Pi honorary scholastic society.

Dorothy (Glenn) Wheeler, ba '39, 91, Lawrence, Kan., on July 14. She operated Lawrence Optical Co. with her husband, taught quilting and was a member of Kaw Valley Quilters. A lifetime member of the Washburn Alumni Association, as a student, she was a member of YWCA and Alpha Phi sorority.

'40s

John Altenborg, jd '48, 89, Lindsborg, Kan., on March 23. An Army World War II veteran, he practiced law for 35 years and was a member of Messiah Lutheran Church. At Washburn, he was a member of Delta Theta Phi legal fraternity.

Mary (McIntosh) Anderson, ba '45, 84, Fernandina Beach, Fla., on May 9. She was a social worker for the State of Kansas and was active in community choirs, church and PEO and was a member of Washburn's Whiting Society. As a student, she was a member of Kappa Alpha Theta sorority.

Frances (Waring) Clark, b music '42, 87, Portland, Ore., on June 25. She taught piano and organ at Murray (Ky.) State University. At Washburn, she was a member of Sigma Alpha Iota, Independent Women, YWCA, orchestra and Ichadettes.

Edward Costello, jd '49, 85, Marion, Kan., on April 2. An Army World War II veteran, he was a lawyer and banker, served on the Kansas State Bank Commission and was active in Veterans of Foreign Wars and American Legion. At Washburn, he was a member of Delta Theta Phi legal fraternity.

Roberta (Gibson) Denman, ba '48, 81, Des Moines, Iowa, on May 28. She retired as a secretary at Hubbell School. At Washburn, she was a member of International Relations, Women's Athletic Association, Student Christian Association and Delta Gamma sorority.

Norma (Roberson) Loveless, ba '46, 83, Salt Lake City, Utah, on May 22. She was active in PEO and other volunteer activities. At Washburn, she was named to Who's Who Among Students in American Universities and Colleges and was president of Independent Student Association.

Alfred Rupp, bba '48, 84, Lancaster, Pa., on May 22. An Army Air Force World War II veteran, he was the manager of many J.C. Penney Co. stores and a member of Kiwanis, Rotary and the Chamber of Commerce. At Washburn, he played basketball.

Ruth (Forbes) Wehrman, ba '40, 89, Emporia, Kan., on June 25. She was a secondary teacher in several school districts in Kansas and Missouri and tutored after retirement. At Washburn, she was a member of Independent Women and Blue Peppers.

'50s

Marilyn (Keim) Bales, b ed '56, 73, Topeka, on May 20. As a student at Washburn, she was named to Who's Who Among Students in American Universities and Colleges, initiated into Nonono, was president of Future Teachers of America and vice president of Alpha Phi sorority.

Carl Bilger, b music '57, 80, Topeka, on July 6. He taught music in Hutchinson, Kan. At Washburn, he was a member of Washburn Singers, choir, opera workshop, band, orchestra, symphonette and Future Teachers of America.

William Boettcher, jd '58, 75, Mesa, Ariz., on June 11. He practiced law and was a member of First Evangelical Lutheran Church, Rotary and Classic Jazz Society of Arizona. At Washburn, he was a member of Phi Alpha Delta law fraternity.

Lelyn Braun, jd '59, 76, Hays, Kan., on June 21. A Navy veteran, he was an officer with the Kansas Trial Lawyers Association, a member of the Kansas Bar Association board of governors and a member of the State of Kansas Highway Commission. At Washburn, he joined Delta Theta Phi legal fraternity.

'60s

Judy Albertson-Ruedlinger, b ed '62, 67, Saunderstown, R.I., on July 17. She was assistant director for the University of Kansas Alumni Association 1986-93, was honored as University of Kansas Woman of the Year and was a past national officer of Kappa Alpha Theta sorority.

Margaret (Coffman) Albright, b ed '61 and m ed '69, 92, Overbrook, Kan., on July 3. She was a primary school teacher in Overbrook and Topeka for 30 years and was a member of Overbrook United Methodist Church.

Ronald Bliss, bba '68, 64, Dade City, Fla., on May 10. He was vice president of Mortgage Guaranty Insurance Corp. and a lifetime member of the Washburn Alumni Association.

David Cowan, bs '66, 66, Des Moines, Iowa, on May 22. A licensed independent social worker and board certified diplomat, he was director of the Kanza Mental Health and Guidance Center in Hiawatha, Kan., and a member of Child Psychiatry Associates PC in Des Moines.

Janice (Pogue) Ferrell, b ed '62 and m ed '69, 82, Topeka, on July 10. She taught four years at North Fairview Grade School and 22 years at Pauline Central Grade School and was a member of the Order of the Eastern Star, serving as Worthy Matron.

Eliseo Gomez, bba '69, 61, Cypress, Texas, on June 14. An Air Force veteran, he was a rail coordinator for Cemex for more than 30 years and a member of Christ the Redeemer Catholic Church.

R. Michael Lawrence, ba '68, 63, Augusta, Kan., on July 14. He served in the Army National Guard and was a salesman and owner/broker of a Realty Executive Premier branch and owner of Vision Financial. At Washburn, he was a member of Collegiate Young Republicans and Kappa Sigma fraternity.

Niles Nelson, ba '61, 74, Bangor, Maine, on May 23. An Army veteran of the Korean War, he had a 30-year teaching career and also coached high school basketball. At Washburn, he lettered in football, basketball and baseball, was assistant basketball coach and joined Kappa Sigma fraternity.

Elizabeth "Jane" (Turpin) Pracht, ba '60, 69, Lawrence, Kan., on July 6. She worked 20 years as director of quality assurance for Paniplus Co. in Olathe, Kan. At Washburn, she was secretary-treasurer of the Chemistry Club.

Jansji (Fontijn) Pruyser, ba '63, 95, Topeka, on June 28. She was a member of many organizations, including the Topeka Handweavers Guild, and supported the fine arts, social and political causes, environmental issues and the Presbyterian Church.

Marjorie (Spurlock) Schoonover, b ed '65 and m ed '75, 88, Valley Falls, Kan., on June 28. She was an elementary teacher for 47 years, retiring from the Valley Falls USD 338 and was a member of First Christian Church and Alpha Delta Kappa sorority.

Winifred Zimmerman, bs '67, 86, Sterling, Colo., on May 22. A retired social worker, she was a member of PEO and First Presbyterian Church in Topeka and was an activist against war and the death penalty.

'70s

Philip Cansler, b music '76, 54, Portland, Ore., on June 2. An associate professor at the University of Portland, he taught 28 years, conducted the concert and pep bands, published two books for trumpet, produced four CDs and had more than 50 articles published in music journals. At Washburn, he was a member of Phi Mu Alpha Sinfonia music fraternity.

Vickie (Campbell) Davison, b ed '72, 58, Bedford, Texas, on June 16. She was a flight attendant for American Airlines for more than 30 years and received the professional flight attendant award for outstanding service.

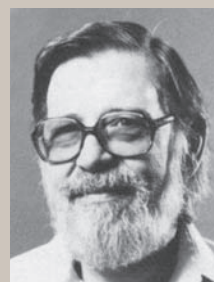
Margaret (Wilson) Smith, bs '78, 79, Topeka, on June 28. She retired as the chief probation officer for Shawnee County (Kan.) probation services and had previously served as a bailiff and court administrator for District Court Judge William Carpenter.

'80s

Fernando Granado, ba '82, 59, Fresno, Calif., on June 5. He worked in student services for the State Center Community College District and previously was program director with KFSN TV Channel 30.

Ella (Thomas) Neff, aa '83, 82, Lakin, Kan., on April 22. She served 1975-81 as a district magistrate judge and was active in civic and community organizations, including Cub Scouts and PTA, was a piano accompanist and provided volunteer tax assistance.

IN MEMORY



FACULTY

Harvey McArthur, 89, Baldwin City, Kan., on July 3. He joined the Washburn department of education in 1965, retiring in 1986 as professor emeritus. An Army World War

II veteran, he was discharged from the Army Reserve in 1950 at the rank of captain. He previously was head of the department of education at Bethany College and also taught high school in Burrton, Kan., junior high in Lawrence, Kan., and served in Lawrence and Lecompton, Kan., as an elementary school principal and teacher. He earned a bachelor of science (1941), master of science (1949) and doctorate (1962) from the University of Kansas. His wife, **Madge (Jones) McArthur, b ed '67 and ma '70**, survives.

IN MEMORY



FACULTY

Nellie (Teague) Zeman, 98, Hays, Kan., on June 22. She served at Washburn 1951-75 as associate professor, education; supervised student teaching at the elementary

level; sponsored the Students National Education Association; was initiated into Nonono and retired with emeritus status. She previously taught in elementary schools in Topeka and Hays, where she was principal 1943-44. She earned a bachelor of science degree in 1936 from Fort Hays State University and a master of art degree in 1946 from Colorado State University.

IN MEMORY



Grant Cushinberry, honorary doctorate '94, 86, Topeka, on July 1. He was an Army combat medic during World War II and had 33 years in federal service, retiring from the Colmery-O'Neil VA Medical Center. Known as a philanthropist, he was a principle figure for nearly

30 years in the Community Thanksgiving Dinner and God's Little Half Acre, which distributed clothing and food. He also took hundreds of children to the Arab Shrine Circus free of charge. He served as president of Kansas First Kiwanis Golden K Club and received many honors, including the 1975 humanitarian Kansan of the Year from the Topeka Capital Journal, the Governor's Award, the American Legion Award, the Lion's Club Paul Harris Award and he was named an honorary member of Sagamore. A Topeka city park is named in his honor, and he is featured on a panel of the Great Mural Wall of Topeka.

IN MEMORY



Raymond Stewart, bba '58 and honorary doctorate '84, 72, Shell Knob, Mo., on July 22. A certified public accountant, he held many positions with Yellow Freight System, including chief accountant, senior vice president-finance and executive

vice president and retired as president in 1987. He previously worked for Arthur Anderson & Co. and the accounting firm of Ross, Fuller & Costello. He served in numerous industry organizations, including chairman of the National Accounting and Finance Council and the executive council of the American Trucking Association. In 1986, he joined the Washburn Endowment Association board of trustees and received emeritus status in 1997. As a student at Washburn, he was a member of Sigma Phi Epsilon fraternity, Association of Business Students and Young Republicans; served as senior class president and vice president of Student Christian Association; and was named to Who's Who Among Students in American Universities and Colleges. With his wife, **Janice (Spicer) Stewart, attendee '58**, who survives, he belonged to the Lincoln Society. Memorials may be made to the Raymond and Janice Stewart Scholarship Fund for Business Students at Washburn.

'90s

Helen (Hamilton) Barnes, ma '91, 75, Topeka, on June 27. She was a journalist and psychologist. At Washburn, she was a member of Psi Chi psychology honorary society.

Bonnie (Pracht) Brickhouse, aa '92 and bas '97, 65, Topeka, on June 23. She helped develop Red Carpet and Talking Books at the Topeka and Shawnee County Public Library, founded the Topeka branch of Survivors in Suicide and worked for KTWU and Jayhawk Area Agency on Aging.

Diana (Seele) Fritz, as '95, 45, Manhattan, Kan., on June 20. She was a respiratory therapist at Mercy Health Center.

Wayman Johnson, bs '90 and ba '93, 52, Topeka, on July 9. He taught junior high and high school history and geography and special needs children at Landon and Robinson middle schools and Topeka High School and owned and operated the Great Bend (Kan.) Karate Institute.

Patricia Smith, aas '97, bas '97 and msw '07, 45, Topeka, on June 3. She owned and operated A New Way to Live Inc. for drug and alcohol rehabilitation.

'00s

Gregory "Buzz" Wilson, bs '00, 50, Topeka, on July 19. He was a section manager for Hallmark Cards. At Washburn, he played basketball 1985-89. He was a member of the 1987 NAIA championship team, starting all 39 games and was a first team all-CSIC in 1988. He was inducted into the Washburn Athletics Hall of Fame in 2006. His wife, **Brenda Vink, bs '94**, survives.

FRIENDS

Helen (Boltz) Davis, 82, Topeka, on May 26. She worked in the registrar's office at Washburn for many years.

Mildred Derington, 96, Aurora, Colo., on June 21. She taught kindergarten and first grade in Elkhart, Kan., for 24 years. From 1977-79, she served as housemother for Kappa Alpha Theta sorority.

Margaret (Griffeth) Dibble, 83, Topeka, on June 17. She served on the Mulvane Art Museum Women's Board.

Cecil Clair "C.C." Hutchinson, 74, Topeka, on June 24. He owned and operated Neosho Construction Co. and Saginaw Corp. in Council Grove, Kan., and was a supporter of scholarships at Washburn.

Samuel Leonard, attendee '29, 101, Ithaca, N.Y., on Nov. 11, 2007. He retired as professor emeritus, zoology and endocrinology at Cornell University, was a lifetime member of the Washburn Alumni Association and a member of Washburn's Lincoln Society.

Cynthia (Davis) McKinney, attendee '53, 74, Topeka, on May 14. She served on the Washburn Alumni Association board of directors and was a member of the Ichabod Club. As a student, she joined Delta Gamma sorority.

Clifford Starbuck, attendee '60, 69, Topeka, on June 6. He operated Clif Starbuck Advertising, served on the Shawnee Heights school board and was equipment manager in the health, physical education and exercise science department at Washburn. As a student, he was a member of the football team and Kappa Sigma fraternity. His wife, **Mary Ann (Morie) Starbuck, b ed '61**, survives.

Eloise Wells, 91, Topeka, on June 9. She was a founding and active member of the Mulvane Women's Board.

Henry Wells, attendee '45, 85, Castle Rock, Colo., on May 14. An Army veteran, he was a teacher and counselor in Denver (Colo.) public schools and a lifetime member of the Washburn Alumni Association. At Washburn, he played football and was a member of Kappa Sigma fraternity.

MEMORIAL GIFTS

Remembering loved ones through memorial or honorary gifts to Washburn University leaves a unique legacy in their names while enriching the lives of students at the university. A gift to Washburn honors individuals in keeping with your wishes and unites their memory with the lives of so many others. Please visit www.givetowashburn.org/Giving-Tributes/Memorials/Index.htm for more information on how to create a memorial or honorary gift.

