

THE MUSIC LABOD

PAGE 5

MUSIC TO OUR EARS

Broadway's Jeff Kready
and Nikki Renee Daniels
star at Washburn



On April 21 at Washburn, 200 high school freshmen from the Topeka and Auburn-Washburn school districts participated in the state's first Junior Achievement Skills to Achieve Symposium at the Memorial Union. The event featured representatives from AT&T, Bartlett & West and Westar Energy, including Washburn alumni, working with and talking to students about math and science-related careers and education paths. In addition, Washburn professors spoke to students about science, technology, engineering and math (STEM). Search #SkillsToAchieveJA on Twitter for tweets, photos and videos from the symposium.



Media specialist/The Ichabod editor

Ernie W. Webb III, ba '98 • ernie.webb@washburn.edu

Alumni Association director

Susie Hoffmann, bba '87 • susie@washburn.edu

Contributors

Katy Browne, aa '07
administrative specialist, Alumni Association

Kathy Busch
director, communications
Washburn University Foundation

Gene Cassell
director, Sports Information

Peggy Clark
photographer, University Relations

Danny Funk
assistant director, Alumni Association

Grace Hildenbrand
communications coordinator, assistant to dean
College of Arts and Sciences

Cynthia Hornberger, bsn '78
special assistant to the president

Amanda Hughes, ba '00
assistant director, University Relations

Julie Olson, aa '94
director, donor relations
Washburn University Foundation

Michaela Saunders
web editor, University Relations

Sarah Towle, ba '07
assistant director, communications
Washburn University Foundation

Jeremy Wangler,
communications specialist,
Washburn University Foundation



FEATURES

5

Cover story: Kready, Daniels music to the ears of Washburn community

9

Welcome additions: Statue, signature sculpture and bench part of grand entrance

14

Sesquicentennial: Grand celebration includes graduation and Homecoming

23

Retiring professor of finance Baker has lasting impact on students, University

27

Rooted in Topeka: Alumnus Romero continues work in community, at University

35

Webb column: 'Forever Ichabod' captures the Washburn experience

43

Work of art: Washburn honors longtime professor, chairwoman Taylor

DEPARTMENTS

3 From the President

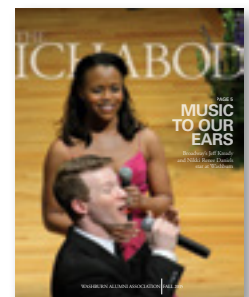
20 Campus News

27 Alumni News

39 Sports

45 Class Notes

48 In Memory



CONTACT US

Your news, thoughts and questions are important to us. Please write, telephone or send us an email.

Letters to the editor and news of jobs, honors, weddings, anniversaries and births are always welcome. Please include your name, class year, address and daytime phone number. Letters to the editor may be edited for length and clarity.

The ICHABOD alumni magazine is published three times a year by the Washburn Alumni Association for alumni, faculty, staff and friends of the University. Third-class postage paid at Topeka.

Address: 1700 SW College Ave., Topeka, KS 66621
Telephone: 785.670.2303

Email: ernie.webb@washburn.edu • Website: washburn.edu/alumni



FROM THE PRESIDENT

This fall, we will celebrate our Grand Homecoming, with hundreds of alumni, students, faculty and staff enjoying 150th anniversary festivities.

As you step onto campus, you will see several facility changes: the renovation of Morgan Hall to include a wonderful new Welcome Center, a new residential living and food service facility underway, and the Kansas Bureau of Investigation (KBI) Forensic Science Center.

This new forensic science building and associated University programs reflect the increasing collaboration of business and education to meet rapidly changing needs of society.

Several years ago, we proposed a collaboration to locate the KBI lab to campus. Three years ago, the governor and attorney general asked if we still were interested in a partnership between Washburn and the KBI to meet the state's investigative priorities. We said "Yes."

Many individuals representing state, local and University interests met over the course of a year to design and propose funding for a new building on the Washburn campus. In exchange for a long-term lease, Washburn will share with the KBI 12,000 square feet of lab space. This will permit us to expand selected science programs that prepare forensic scientists and professionals. During the 2013 and 2014 legislative sessions, University lobbyists John Pinegar, ba '82, and Doug Smith worked tirelessly with our Shawnee County legislative delegation to support the building of a 100,000-square-foot facility on the Washburn campus. The funding for the long-term lease was approved, and construction began in May 2014.

With additional state support, we are excited to expand existing or establish new programs in crime scene investigation, digital forensics, and forensic anthropology, chemistry and biology.

This fall, we will begin the search for three faculty and one staff member to support these programs. Equipment such as DNA sequencers, microscopes, decoding software, and gas chromatography and tire-tread analysis kits will be purchased. Curriculum will be finalized and students will be admitted. We expect our first graduates in 2017-2018.

This has been a remarkably complex project. I wish to thank faculty and administrative leadership for their vision: Randy Pembroke, vice president, academic affairs; Laura Stephenson, dean, College of Arts and Sciences; Pat Munzer, dean, School of Applied Studies; John Mullican, associate professor, chairman, biology; Steve Angel, professor, chairman, chemistry; Gary Bayens, professor, associate dean, criminal justice; Cheryl Childers, associate professor, chairwoman, sociology and anthropology; Bruce Mechtly, associate professor, chairman, computer information sciences.

We appreciate the efforts of Rick Anderson, vice president of administration, treasurer, and his colleague Chris Leach, associate vice president, director, finance, for their work with the Topeka Public Building Commission to arrange the debt and select architects and contractors.

Finally, we salute the leadership of the KBI. Director Kirk Thompson, bs '01, and his team of Mike Van Stratton, director, laboratory, and T.L. Price, bs '93, project manager, assistant director, laboratory, have been outstanding partners in this successful project.



Karl Fundenberger, the director of bicycle operations at Topeka Metro, is one of the organizers of the city's new bike share program. Implemented after surveys showed a high interest in bicycling in Topeka, the program includes 100 bikes, each equipped with a basket, GPS tracking system and lock. Fundenberger, ba '08, was one of the organizers of the launch for the program held April 15 at Washburn and participated in a ride from campus to the Topeka & Shawnee County Public Library.



Jeff Kready, b music '04, credits his Washburn experience for cultivating a career on Broadway. Along with wife Nikki Renee Daniels, the Topeka native taught Washburn University and area high school students in several classes and performed during the sold-out "Broadway in the Heartland" concert. Kready and Daniels took a break from their lead roles on the stage in New York City to serve as the Ruth Garvey Cochener Fink Professors in Leadership from April 13 to April 17. *Photo by Peggy Clark*

MUSIC TO OUR EARS

Alumnus Kready, Daniels take students to 'next level' as Ruth Garvey Cochener Fink Professors in Leadership

By Ernie W. Webb III • ernie.webb@washburn.edu

As the evening of April 17 came to a close, Jeff Kready and Nikki Renee Daniels sat around a table with family in the Bradbury Thompson Alumni Center discussing a whirlwind week at Washburn as the Ruth Garvey Cochener Fink Professors in Leadership.

Kready, a music '04, and Daniels seemed to be embracing the peaceful setting in the moments following an after-party for the sold-out "Broadway in the Heartland" concert at White Concert Hall.

"We were excited to do this. Giving back to Washburn is something I really look forward to doing," said Kready, star of the Tony-winning musicals "A Gentleman's Guide to Love and Murder" and "Billy Elliot the Musical." "The music department at Washburn was a huge part of my development as a performer. It's important to come back and pass on the same support to the next generation here."

Kready and Daniels, who met on the set of "Les Misérables" in 2006 and married in 2009, were on campus as Fink Professors from April 13 to April 17. In addition to rehearsing for the concert, the performers

spent the week working with students from Washburn and area high schools.

"I haven't done much teaching, so I thought it would be interesting to see what it's like," said Daniels, who stars on Broadway in "The Book of Mormon." "We don't plan on retiring anytime soon, but the natural progression once you do retire is to teach. This was a great opportunity to experience that."

IN THE CLASSROOM

Kready, also a Washburn Rural alumnus, credits Washburn for helping to cultivate his career. Because of that connection, the Fink Professorship seemed like a perfect fit, said Ann Marie Snook, chairwoman and professor, music.

"We reached out to them about the professorship



Clockwise from top left: One of the highlights of the concert was a rendition of “Lida Rose” from “The Music Man” featuring Jeff Kready, his father, grandfather and brother. The “Broadway in the Heartland” concert benefitted Washburn’s Department of Music. *Photo by Peggy Clark*

Nikki Renee Daniels said the visit to Washburn gave her the opportunity to teach, which she hadn’t done extensively before serving as a Ruth Garvey Cochener Fink Professor in Leadership. Daniels is starring in the lead role in “The Book of Mormon” on Broadway. *Photo by Peggy Clark*

Jeff Kready and Nikki Renee Daniels taught students throughout the week in music and leadership classes. Both said actors often teach after they retire from performing. *Photo by Jeremy Wangler*

because we wanted them to have an extended period of time working with students,” she said. “We wanted our students to have a glimpse of what is accessible to them and how an education at Washburn will prepare them. Their work with students was outstanding. Their impact exceeded our expectations, which were already high.”

Kready and Daniels also taught a leadership class at Washburn, drawing from their experiences on Broadway. Kready gave the students three keys to good leadership: “1. Know your role. 2. Be a team player. 3. Remember that what you’re doing isn’t brain surgery ... unless

you’re a brain surgeon.”

Kready also stressed the importance of enjoying the path to success, telling the class: “Don’t make the mistake of trying to find the meaning of your life in your achievements.”

One of the students the performers worked with said the experience exemplified Washburn.

“Washburn really does have those connections that most people think bigger schools have,” said Phillip Watson, b music ’15. “I feel like it’s a big-time atmosphere here. To have people like Jeff Kready

here says something about our professors. My last semester, I took a class from the same teacher (Lee Snook, professor, music) he learned from. That speaks to the quality of education at Washburn.”

ON THE STAGE

When Kready and Daniels weren't with students, they were rehearsing for the “Broadway in the Heartland” concert. Once it began, those attending enjoyed a show that included songs Kready and Daniels have performed on stage through the years.

In addition, Kready, his grandfather, father and brother formed a barbershop quartet and performed “Lida Rose” from “The Music Man” with Daniels in the finale to the concert, which filled White Concert Hall and benefitted the Department of Music.


“The impact Jeff and Nikki had was not only in teaching and mentoring our students, but also financially,” Ann Marie Snook said. “The proceeds from the concert will be for general use in the music department and will enhance the experiences of our students. We have tremendous support from our alumni and friends, and this concert was another great example of that.”

THE IMPACT

When Kready talks about the impact of growing up in Topeka and attending Washburn, the reaction in New York often is surprise.

“I always tell people about the community theatres in Topeka, the support of my fellow students and working with professors at Washburn,” Kready said. “Washburn is where I learned to sing and be a musician. A lot of us from Topeka have done very well in the arts. I take pride in that.”

Ann Marie Snook said that pride was evident and infectious.

“The whole week was exhilarating, and I think we provided our students with an experience that can't be replicated anywhere else,” she said. “Our students knew this was a big event, and they rose to the occasion while working with them. Jeff and Nikki recognized that and were impressed with our students. They took our students to the next level.” 

ABOUT KREADY AND DANIELS

Education: Kready received a bachelor of music degree in 2004 from Washburn. He is a Washburn Rural High School alumnus. Daniels received a bachelor of fine arts degree in 2001 from the University of Cincinnati College Conservatory of Music.

Kready credits include: Monty in “A Gentleman’s Guide to Love and Murder,” Tony in “Billy Elliot the Musical,” Jean Valjean in “Les Miserables.”

Daniels credits include: Nabulungi in “The Book of Mormon,” Tracy in “Radio City Christmas Spectacular,” Clara in “The Gershwins’ Porgy & Bess,” Fantine in “Les Miserables.”

Children: Daughter Lena, 2.

QUESTIONS AND ANSWERS

Q: You’ve been in Tony Award-winning shows, and you’ve been the lead in shows. How do you define “making it”?

A (Jeff): In this business, working is making it. The goal is to work because you never know when you’re not going to be working. I don’t know if I’d ever say we’ve made it, but it sure is fun trying.

A (Nikki): Since we’ve both gotten to the point of starring in a Broadway show, I think that would be considered making it, even if our current roles are the last thing we do. I feel like I can at least be happy reaching the goal I set out to meet in high school.

Q: How has having your daughter changed your life?

A (Nikki): It definitely has changed our schedule. When she’s up, we’re up. There is no sleeping in. Our worlds revolve around her schedule, but we obviously wouldn’t change that. One thing that I have been surprised by is the amount of work we’re getting. I thought it might slow down after she was born, but we’re working more now than ever.

A (Jeff): It has changed our lives for the better. I really feel like we’re living a dream. We are getting to do what we set out to do, we get to do that as a family, which is the greatest part. We joke about looking back at this time as the good old days, but we’re happy to be living in the good old days now and we recognize that.



As the Welcome Center at Morgan Hall continued to take shape in July, construction workers finished placing the letters to spell Washburn University on the front of the facility. *Photo by Ernie W. Webb III*

STATUESQUE ICHABOD

Board of Trustees funds life-size bronze statue for Sesquicentennial Plaza

By Kathy Busch • kbusch@wufoundation.org

In early 2014, construction began on the renovation of Morgan Hall and the addition of a new Welcome Center. Now, the renovation is nearly complete. When students, faculty, staff, alumni and friends gather on campus for Grand Homecoming, they will see the transformation of the north side of campus. This includes a distinctive front entrance to the

University, complete with a large plaza on the north and a covered plaza on the west.

On Friday, Oct. 23, as part of the sesquicentennial celebration, there will be a tour of Morgan Hall and the Welcome Center. During that time, a life-size, bronze Ichabod statue will be unveiled in the center of the new Ichabod Sesquicentennial Plaza, welcoming all who



The personalized bricks that will be located in the plaza north of the Welcome Center arrived on campus in July. The bricks will be placed before the facility's grand opening during Grand Homecoming. *Photo submitted*

come to campus.

The seven-foot statue, created by Bergen Sculpture Studio LLC, Salina, Kansas, was funded through contributions from the Washburn University Foundation Board of Trustees at a cost of \$100,000.

"Celebrating Washburn's 150th anniversary has been so exciting," said Dan Hutchins, bba '78, chairman, Washburn University Foundation Board of Directors. "As trustees, we wanted to do something special for this occasion, something that would leave a lasting legacy for future students. The Ichabod statue seemed perfect."

The statue is surrounded by pavers engraved with the names and inscriptions of thousands of Ichabod fans from across the country. This project is the first of its kind on the Washburn campus.

"This project, like so many others, is made possible with the partnership of the University and generous donors," said JuliAnn Mazachek, president, Washburn University Foundation. "We are so fortunate to have so many alumni and friends who are committed to creating the best possible educational experience for our students today and tomorrow. We believe the newly renovated Morgan Hall, the Welcome Center and the surrounding outdoor spaces will truly enhance the learning environment." 🧢

POND GIFT FUNDS SIGNATURE SCULPTURE

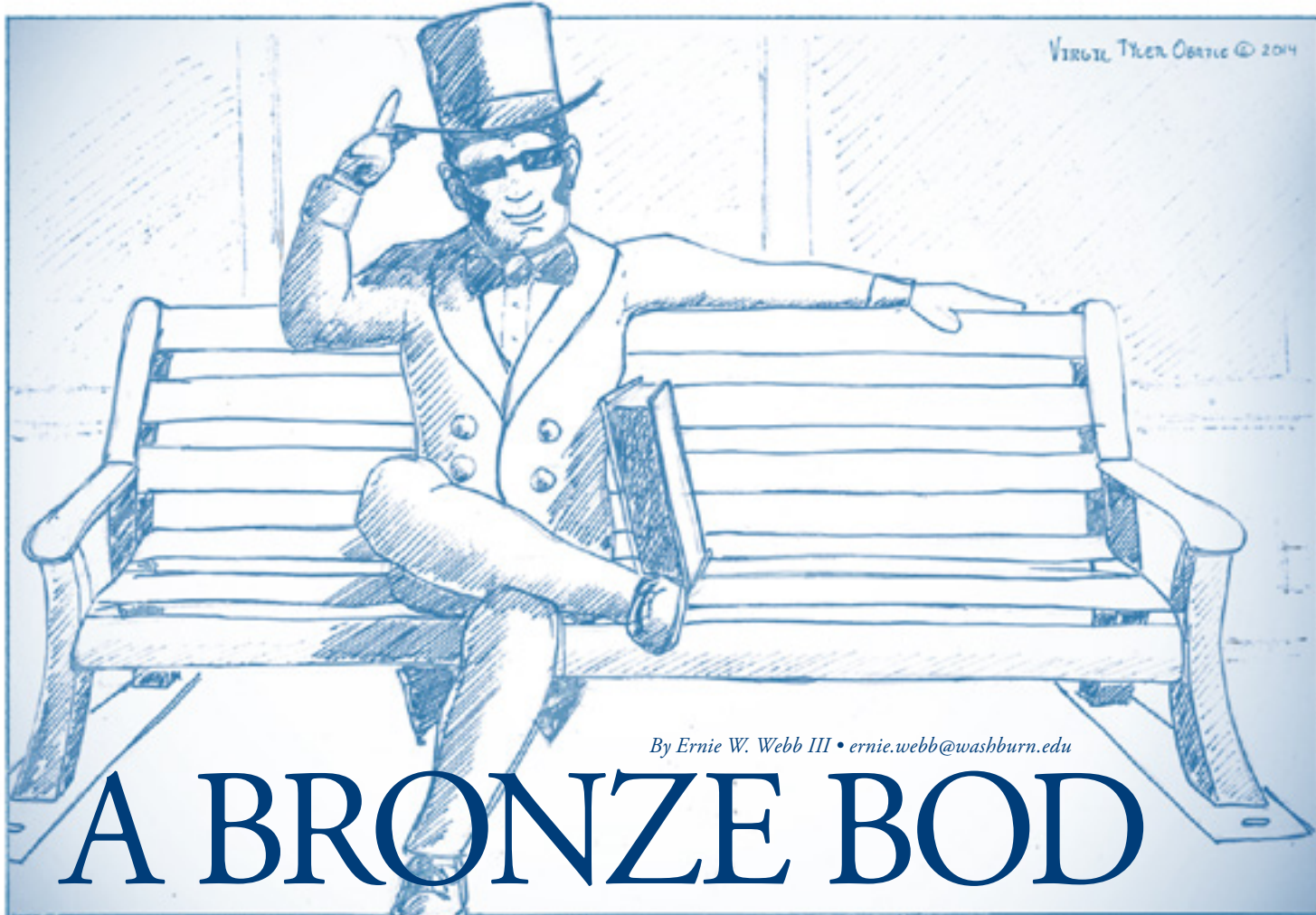
Dale, bba '69, and Susan Pond have made a very generous gift to commission a signature sculpture for the front of the new Welcome Center. In addition to supporting the Morgan Hall and Welcome Center project, the Ponds said it is important that there be a beautiful piece of art leading into the facility.

"Susan and I love art and all that it brings to our lives," Dale Pond said. "We want to create that sense of beauty surrounding the new Welcome Center, which we know will be a focal point of Washburn for every student, family and visitor who comes to campus."

"Dale and Susan's love of art and their commitment to Washburn resulted in this wonderful gift to the University," said JuliAnn Mazachek, president, Washburn University Foundation. "Through their generosity, everyone who comes to campus can enjoy the beautiful sculpture that will be featured on the northeast side of Morgan Hall, adjacent to the Ichabod Sesquicentennial Plaza."

The 12-foot sculpture is the work of world-renowned artist Rita Blitt. Blitt graduated from the University of Missouri-Kansas City, and continued her studies at the Kansas City Art Institute. She has created more than 45 monumental sculptures up to 60-feet high and has had more than 70 solo exhibitions during her career.

The sculpture will be unveiled Oct. 23 in conjunction with Grand Homecoming and the official opening of Morgan Hall and the new Welcome Center.



By Ernie W. Webb III • ernie.webb@washburn.edu

A BRONZE BOD

Ichabod bench sculpture a way for current, former board members to say ‘thank you’

Artist Virgil Oertle drafted a rendering of the Ichabod bench he is sculpting. The bench, partially funded by current and former members of the Alumni Association board of directors and other donors, will be placed in the Welcome Center plaza. *Rendering submitted by Virgil Oertle*

The Ichabod has a brisk walk and friendly smile, tips his hat as he passes, carries a book under his arm and is neatly dressed.



By the Grand Homecoming celebration, you’ll be able to add “he is bronze” to that description.

As part of the grand opening ceremony for the Welcome Center at Morgan Hall, the

University will unveil a bronze Ichabod bench sculpture.

The bench will be placed in the Welcome Center plaza.

“This project is a nice way of saying, “Thank you, Washburn. We appreciate what you’ve done for us,” said

David Manley, ba ’67, former member of the board of directors. “It’s important for our campus to grow and to continue to be beautiful, and it’s nice to be a part of that.”

The bench project began with an email forwarded to Manley, then a member of the events committee on the alumni board, two years ago. The email detailed the work of sculptor Virgil Oertle, who created bronze mascot sculptures for Brigham Young University and University of Wisconsin-Whitewater.

The sculptures are popular with prospective students, students and other constituents, many of whom pose for

photos with the works of art.

“My father was helping with some email marketing, and Dave came across an email that we sent out,” said Oertle, who is based in Utah. “He was interested, contacted me and things began to develop.”

Manley took the idea of having a bronze Ichabod bench to the events committee, and the members wanted to pursue the sculpture. Susie Hoffmann, director, Alumni Association, presented the project to the rest of the board, which decided to proceed.

During the next several months, a committee consisting of board members Manley, Hoffmann, bba '87, John Haverty, ba '99, Mark Ross, bba '83, and Roger VanHoozer, ba '72, worked with Oertle to finalize the design.

“It was a back and forth process that took some time, but we’re happy with the renderings we’ve seen,” Manley said. “The bench is going to be in a great location and kind of be the focal point of the area where current and future students, alumni and guests can relax and take a picture with the Ichabod.”

The sculpture will feature a life-size Ichabod sitting on a bench with a plaque including the names of any current and former alumni board members or donors who contribute at least \$500 or more to the bench project, which will cost about \$50,000.

Oertle will spend several hours nearly every day for three or four months working on the piece, which is scheduled to be complete and in place in time for Grand Homecoming. 🦋

ONLINE

- The Ichabod bench is being modeled after a sculpture Virgil Oertle made for Brigham Young University. Read more about that project at universe.byu.edu/tag/cosmo-bench/.
- Visit <http://bit.ly/1E22mD1> to view a video of people interacting with the Cosmo bench at BYU.



ABOUT DAVID MANLEY

One of the driving forces behind the Ichabod bench project, David Manley served on the alumni board of directors from 2011 to 2015. He received a bachelor of business administration from Washburn in 1967 and served in the Air Force during the Vietnam War.

Manley joined Blue Cross Blue Shield of Kansas after serving in the military and worked at the company for more than 32 years before retiring as vice president of member services.

He is married to Washburn alumna Mary (Coulter) Manley, ba '67, and has a son, Jason Manley, and daughter, Jennifer (Manley) Slack, ba '97. In addition, brother James Manley, bba '76, sisters Betty Stiles, bsw '74, and Carol Kaufman, b ed '82; and niece Erica (Kaufman) French, ba '10, are Washburn alumni.

Q: What prompted your involvement in the board of directors and with the sculpture project?

A: Mary and I were on a Washburn alumni trip and had the opportunity to visit with (director) Susie Hoffmann. Shortly after the trip, she offered me the opportunity to serve on the alumni board, which I gratefully accepted. I have always felt a loyalty to Washburn and a great need to somehow pay back to the University for the education I received. I don't think I would have been able to enjoy the career I had if it wasn't for the excellent learning opportunity and encouragement I received from the faculty and staff at Washburn.

Q: What do you remember about your time as a student?

A: I remember the opportunity to be with the students that were here. They were all very focused on what needed to be done to get your degree.

Q: What is the biggest difference now compared to when you were a student at Washburn?

A: The campus has totally changed, and it's so impressive to see what it is now. It was tough to lose those buildings with all that history in the tornado, but what a transformation that has taken place. It's really an amazing sight to see.



A view from the inside of the new Welcome Center at Morgan Hall. The grand opening for the facility will be at 3:30 p.m. Oct. 23 as part of Grand Homecoming.



BOW TIE BASH TO CAP GRAND HOMECOMING, SESQUICENTENNIAL CELEBRATION

By Jeremy Wangler • jwangler@wufoundation.org

Traditions old and new. The dedication of the University's new front door and the unveiling of a statue. A bonfire, parade, football game, crowning of royalty and a Bow Tie Bash.

Washburn's Grand Homecoming will be the culmination of a four-year celebration of the University's sesquicentennial. Many events are planned to commemorate 150 years of history and perhaps start new traditions. Grand is truly the perfect word to explain the festivities.

"This will be an emotional stirring of people's awareness and memory of Washburn," said Jerry Farley, president, Washburn. "It gives us the opportunity to tell our story and talk about the school transitioning from the first 150 years to the next 150 years."


Friday, Oct. 23, visitors to campus can tour the new Welcome Center and renovation of Morgan Hall, developed to be a one-stop center for students to fulfill admissions and enrollment needs. The Welcome Center dedication will begin at 3:30 p.m. and a new Ichabod statue, bench and signature sculpture for the front lawn will be unveiled in the Ichabod Plaza. Those who purchased bricks for the Sesquicentennial Ichabod Plaza will find their personalized pavers.

An old tradition will be made new again Friday with a bonfire at 8 p.m. as Craig Schurig, head football coach, and Farley pep up fans for Saturday's football game.

Plan to spend the whole day Saturday on campus with all three meals covered. Start with breakfast, a pancake feed just east of the Bradbury Thompson Alumni Center from 7:30 a.m. to 10 a.m. Take in the parade at 10 a.m. and head to the Union lawn for lunch at the Grand Homecoming tailgate tent before the game. Kickoff is 2 p.m. in Yager Stadium.

Come as you are right after the game, hopefully in Ichabod gear and celebrating a victory, to the Bow Tie Bash and enjoy food, beverages and bands. The celebration will come to an end Saturday at 8:30 p.m.

with a grand finale on the north Union lawn between the Memorial Union and Garvey Fine Arts Center.

See the schedule on Pages 15 and 16 and regularly check washburn.edu/homecoming for updates and details on events. Some events require registration. 

GRAND WEEK FOR STUDENTS

Other Homecoming events are scheduled throughout the week on campus, beginning on Oct. 19 with the Homecoming Ball and Late Night Breakfast. That day also marks the beginning of the Top Hat Auction, which benefits United Way of Greater Topeka.

The rest of the week includes student events, including the Ichabod Race, Open Mic Night, WU Chef Cake Decorating Competition and Yell Like Hell.

The Homecoming king and queen will be crowned at halftime of Washburn's football game against the University of Central Oklahoma on Oct. 24.

For more information about events throughout the week, visit washburn.edu/homecoming.

REUNIONS

Affinity groups are encouraged to organize reunions during Grand Homecoming weekend. Please notify Susie Hoffmann, director, Alumni Association, at 785.670.1641 or send an email to 150homecoming@washburn.edu, if you plan to do so. Among the groups organizing reunions for the weekend are Kappa Alpha Theta, Delta Gamma, Nonoso, Learning in the Community and the Dancing Blues. For more information, including an updated list of groups hosting reunions, visit washburn.edu/homecoming.

BROCHURE AND NOTABLES

For more information on Grand Homecoming and about some of the notable figures in Washburn history, view the brochure and Ichabod Notables publication included with the magazine.

SAVE THE DATE



JOIN US AND CELEBRATE 150 YEARS OF WASHBURN

AUGUST AND SEPTEMBER 2015

August 24-September 30: The sesquicentennial commissioned artwork of Ken Cooper, representing past and current Washburn University buildings in watercolor, are on display in the Sabatini Gallery at the Topeka & Shawnee County Public Library. On Sept. 4, there will be a reception in conjunction with First Friday Artwalk for Cooper's exhibit. Some of Cooper's paintings will be available for purchase. For more information about the exhibit and to view images of Cooper's work still available for purchase, visit washburn.edu/150.



OCTOBER 2015

October 23: Many departments on campus will host open houses from noon to 3:30 p.m. Visit washburn.edu/homecoming for more information.

October 23: Grand opening and dedication of the Welcome Center from 3:30 to 4 p.m. In addition, a new Ichabod statue, bench and signature sculpture will be unveiled. Also, enjoy a historic three-dimensional art piece in the Welcome Center. It will be interactive artwork that includes 170 images and a touch screen allowing guests to read about each image. People from across the globe will be able to view the images online. For more about the statue, bench and sculpture, see pages 9-13.



OCTOBER 2015

October 23: After the reception for the Welcome Center, statue, signature sculpture and bench, walk to the Bradbury Thompson Alumni Center for After Hours and the Top Hat Auction from 4 to 7 p.m.

October 23: At the conclusion of After Hours, follow the crowd to a bonfire from 8 to 8:30 p.m. Coach Craig Schurig and President Farley will speak at the bonfire, a tradition from several years ago the Alumni Association is bringing back for Grand Homecoming weekend.



October 24: Enjoy a hearty breakfast from 7:30 a.m. to 10 a.m. at an all-you-can-eat pancake feed between the Bradbury Thompson Alumni Center and White Concert Hall. For \$5 per person, you'll enjoy flapjacks, sausage and a beverage prepared by Chris Cakes.

October 24: Head to the Foundation lawn or lawn north of the Bradbury Thompson Alumni Center at 10 a.m. to watch the Homecoming parade around campus. Affinity groups who organized a reunion are encouraged to participate in the parade with a float or by walking in it. For more information about participating in the parade, contact the Leadership Institute at 785.670.2000.



October 24: Head to the Union lawn north of Yager Stadium for tailgating before the Homecoming game. The Grand Homecoming tailgate will include two large tents and a barbecue buffet for \$5. Children age 5 and under will be admitted free. RSVPs required. Visit washburn.edu/homecoming to register.



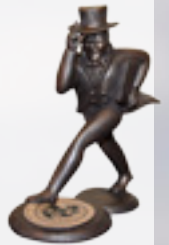
October 24: Cheer on the Ichabods against the University of Central Oklahoma at 2 p.m. in Yager Stadium.

OCTOBER 2015

October 24: Immediately after the football game, join us for the Bow Tie Bash, which will be held in the Washburn Room in the Memorial Union and Bradbury Thompson Alumni Center. Guests need not change after the football game and can attend the event as soon as the game ends. The celebration will feature bands, food and beverages at each location. For more information and to register for the Bow Tie Bash, which costs \$30 per person, visit washburn.edu/homecoming. You must RSVP for this event.

October 24: The celebration wraps up with a grand finale from 8:30 to 9 p.m. between the Memorial Union and Garvey Fine Arts Center. Visit washburn.edu/homecoming for details about the event as they are finalized.

October: The third in a series of Ichabod statues will be available for purchase in the Ichabod Shop. The first two statues also will be available. In addition, the final sesquicentennial holiday ornament will be available for purchase in the Ichabod Shop during Grand Homecoming. The first three also will be available. You also can purchase notecards from the 2012 Art en Plein Aire event and other sesquicentennial items at the Ichabod Shop. Visit ichabodshop.com for more information.



NOVEMBER 2015

November: KBI forensic lab facility grand opening. Follow the Alumni Association on Facebook at facebook.com/washburnalumni for updates on the opening of the facility.





Ashley Murrell received the Sibberson Award for the College of Arts and Sciences in May. Murrell received a bachelor of education degree during Grand Graduation. Jennifer Sourk, chairwoman of the Washburn University Board of Regents, presented the award to Murrell. The May 16 commencement during Washburn's 150th year featured several additions, including a flag procession, new mace and performance of "Ichabods in All We Do" by the Washburn Singers.



A GRAND WEEKEND

Washburn community celebrates 'major event' for newest alumni

By Ernie W. Webb III • ernie.webb@washburn.edu

Graduating seniors received diplomas in a leather binder and wore tassels featuring the sesquicentennial logo. At the end of commencement, Washburn's newest alumni and others in attendance stood in unison to sing the Alma Mater.

As Kevin Kellim, professor, music, turned toward hundreds of Washburn graduates and those attending commencement, he motioned for them to join the Washburn Singers in a rendition of the Alma Mater.

Their collective voices grew louder and louder, filling Lee Arena with pride and accomplishment May 16 during the Grand Graduation ceremony.

"Graduation marks a major transition, a major event in the lives of our students and alumni," said Jerry Farley, president, Washburn. "It's the transition of moving from the world of learning into the world of commerce. It means the equivalent of getting up for that 8 o'clock class forever. Because it's such a big event in

our lives, it's important that we celebrate it."

The celebration for commencement during Washburn's sesquicentennial included several additions the University plans to include during future ceremonies.

The ceremonies for each school and the College of Arts and Sciences featured a flag procession representing Washburn international students and study-abroad trips from more than 100 nations. Graduates received

diplomas in leather binders and wore tassels with the sesquicentennial logo.

In addition, Johnny Lemon, cabinet making instructor, Washburn Institute of Technology, crafted a Grand Graduation mace from the wood of a pin oak tree on campus. The mace included medallions with the University's motto (Non Nobis Solum) and crest, the Ichabod and a bell image representing the University's bell towers.

Farley spoke about Washburn's future while acknowledging the past.

"Just think about the major technological changes we've experienced since Washburn opened," he said. "People were using animals for transportation. Now

think about where we're going to be 50 years from now and the changes we'll see when you return to campus. One thing that won't change will be the quality of education here. This will always be a wonderful experience for students."


The first Ichabod Senior Send-Off was a part of the festivities, as graduating students enjoyed a complimentary lunch served by executive staff, a photo booth and the opportunity to take photos with Farley and the Ichabod mascot.

During the College of Arts and Sciences commencement, members of the Golden Reunion classes of 1945, 1955 and 1965 received medallions while walking across the stage. 🦋



Members of the Class of 1945, 1955 and 1965 received special medallions May 16 during commencement for the College of Arts and Sciences. Golden graduates also attended a reception and dinner May 15 and had the opportunity to tour campus.

Members of the executive staff at Washburn, including Loren Ferre', director, athletics, served lunch to graduating seniors who attended the first Ichabod Senior Send-Off. In addition to lunch, seniors had an opportunity to have a photo taken with Jerry Farley, president, Washburn, and the Ichabod mascot.



Craig Treinen, who received two bachelor of music degrees from Washburn in 1990 and is an assistant professor at his alma mater, was so surprised about being inducted into the Kansas Music Hall of Fame that he called to confirm the honor.

SOUNDS OF SUCCESS

Alumnus, professor inducted into Kansas Music Hall of Fame

By Ernie W. Webb III • ernie.webb@washburn.edu

Craig Treinen was shocked when he received a text notifying him that he was going to be inducted into the Kansas Music Hall of Fame. So shocked that he called a member of the nominating committee after sleeping on it.

“I couldn’t believe it. When I got the text, I called and asked if they wanted me to perform at a dinner or reception, and was told, ‘You’re being inducted,’” said Treinen, who was inducted on March 7. “When we got home, I paced the house all night. The next morning, I called to make sure it was true.”

Though the honor was a surprise to Treinen, it wasn’t to the local jazz community. The Washburn alumnus continues to build on a career that includes an eight-year stint in the Air Force’s Heartland of America Band and his current role as director of jazz studies and assistant professor of music at his alma mater.

Treinen is a renowned alto saxophonist who has played with artists such as Crystal Gayle and the late John Denver, among many others.

“I’ve never been big on awards,” Treinen said. “I care more about what my students are doing and how they’re performing. But this honor really means a lot to me. It’s nice to be recognized for what I’ve done for the state and around the country, as well as the work I’ve put into becoming a good educator. It also meant a lot to have my family at the ceremony because they’re a big part of it.”

Treinen began playing his father’s alto sax in the fourth grade and was hooked. He continued to play in

grade school, middle school and high school, honing his skills under the tutelage of Gary Stroud, his music teacher at Seaman High School in Topeka.

After a semester at the University of Kansas, Treinen transferred to Washburn in 1983, earning bachelor of music degrees in education and saxophone performance in 1990.

“Washburn was great for me. It was the right size, and I had great relationships with my professors, including Ken Ticknor and Chuck Tumlinson,” Treinen said.

Treinen added that his time as a Washburn student continues to have an impact on his experience as a professor.

“I love the faculty here, and I love the students. These kids have so much character, they’re easy to work with and they work hard,” he said. “It’s very similar to what I enjoyed as a student, those close relationships with your professor. I think that’s extremely important to have.” 🙌

ABOUT CRAIG TREINEN

Hometown: Topeka

Education: Bachelor of music in music education and saxophone performance from Washburn, master of music education and doctor of philosophy in curriculum and instruction from Kansas State University

Family: Wife Ann (Falley) Treinen, aa ’86, sons Tyler Treinen and Sawyer Treinen

Favorite musicians: Saxophonists Phil Woods and Cannonball Adderley

Favorite piece to play: “Stella by Starlight”



AN HONOR WITH OPPORTUNITY

Sibberson Award helps recent alumna with internship in South Africa

By Sarah Towle • stowle@wufoundation.org

Emily Juhnke received the Sibberson Award when she graduated with a bachelor of arts degree during fall 2014 commencement. The stipend included with the honor helped Juhnke pay back some student loans and travel to South Africa for an internship. *Photo by Peggy Clark*

Being one of the highest academic achievers in a college class is not an easy task, especially if a student is involved in many extracurricular activities.

The Sibberson Award, established by two generous sisters, T. Erna and Gretchen Sibberson, shows students hard work throughout your college career is worth it. Each sister received a bachelor of arts degree in 1937 from Washburn.

Established in 2002, the Sibberson Award provides a stipend to the top Washburn students at commencement. The stipend assists the students in pursuing plans for the future, such as tuition for graduate studies, travel expenses or start-up capital for a business.

During spring commencement, the highest-ranking members of the senior class from the College of Arts and Sciences, School of Applied Studies, School of Business and School of Nursing each receive the award. During fall commencement, the highest-ranking member of the senior class from all undergraduate programs receives the honor.

“I know the decision on who receives the award is not made lightly, so it was a huge honor,” said Emily Juhnke, the fall 2014 award recipient. “The award shows hard work is valued, and it also comes with great opportunity and responsibility to continue representing Washburn.”

She is doing just that on an international level.

After graduation in December, Juhnke left for Cape Town, South Africa, where she serves as a public relations and communications intern for the Hillsong Africa Foundation. The organization works to serve and restore vulnerable people and situations in their communities through projects in areas such as family strengthening, childhood development, skills development, and relief and response.

She became familiar with the Hillsong Africa Foundation during a study abroad experience called Semester at Sea through which she visited 16 cities in 12

countries while living and taking courses on a ship.

“I am grateful for the Sibberson Award because I will be able to use it to pay back student loans and use some of it to help me with expenses while interning in Africa,” said Juhnke, ba '14.

In addition to making exceptionally high grades at Washburn, Juhnke was involved in Student Media, Nonoso and the Washburn Choir.

As a freshman in 2012, she was one of two students asked to be part of the Washburn University High-Impact Team, which created the Washburn Engage Initiative giving the campus opportunities for service and engagement with community partners. She has also volunteered through her church and at vacation Bible school.

“I always try to put my best effort into whatever I do,” she said. “I think having a fulfilling and successful experience in college requires both being committed to your academics and being active in other activities and experiences. It’s important to be involved inside and outside of the classroom.”

Juhnke also worked as a student caller at the

Washburn University Foundation and social media intern in the University Relations office at Washburn.

Awards like the Sibberson are important for universities to reward student achievement.

“Washburn focuses every day on student success,” said Randy Pembroke, vice president for academic affairs, Washburn. “It is important and gratifying to recognize students when they work hard to reach the highest levels of academic achievement and service to the institution. The Sibberson Award is an opportunity for us to honor these exceptional students who stood out in their college career and support them in their future endeavors.”

Juhnke said she is appreciative of the scholarships and assistance she received while in school and is thankful Washburn is committed to helping its students succeed during their experience in college and beyond.

“My education and experiences at Washburn have given me the desire not only to pursue a career in the mass media field, but also to intentionally search for a job that will allow me to make a positive and lasting impact on others,” Juhnke wrote in her Sibberson essay. 🌟



Emily Juhnke, second from left, is a public relations and communications intern for the Hillsong Africa Foundation in Cape Town, South Africa. She was one of the highest-ranking members of her class and participated in Student Media, Nonoso and the Washburn Choir.



‘FAVORITE TEACHER’ RETIRES AFTER 40 YEARS

By Sarah Towle • stowle@wufoundation.org

Gary Baker, who retired in May after 40 years as a professor of finance, said the highlight of teaching is when a student “gets it.” Baker has supported the University throughout his career, including creating the Professor Gary Baker Finance & Economics Scholarship for Washburn students.

Last semester, Gary Baker, professor of finance, asked a student to take out an iPhone and ask Siri, the device’s intelligent personal assistant, the price of AT&T’s stock.

The class knew in seconds the real-time data available through Siri.

Such scenarios didn’t happen in 1975 when Baker started teaching at Washburn. Computers and the Internet weren’t prevalent, and calculators cost \$100. Chalkboards have since been replaced with whiteboards.

Much has changed on campus since that time, but some things have not, including Baker’s passion for education and his respect for his peers. Few have served as a professor as long as Baker. As he was preparing for retirement in May, Baker reflected on the best parts of the last 40 years.

“Seeing when a person finally ‘gets it’ is the highlight of teaching for me, and it’s so fun to see the students when they come back,” he said. “I’ll miss the camaraderie among the faculty members. Everyone here is well-respected in

their fields, and we’ve worked really well together.”

Out of the 80 semesters he served as a faculty member, he said his favorite class to teach was Introduction to Finance at the junior level because it taught so many practical skills. His goal with each student was to give him or her the “roots and wings” to succeed later on in life.

“Even if a student decided not to become a finance major,” he said, “the class still taught them great life lessons like how to compute payments when they were buying a house.”

Nathan Hollingshead, a junior economics and finance major from Mapleton, Iowa, said he enjoyed Baker’s classes because he was engaging and could easily apply what they are learning to projects he’s done.

“He’s by far my favorite teacher,” Hollingshead said.

Gary Baker said his favorite course to teach was Introduction to Finance because it “taught students great life lessons.” Colleague Jim Eck, a former professor of finance at Washburn, said students enjoy Baker because of his confidence, sense of humor and smile.



“I took a senior-level class a year early because I knew he was retiring.”

Baker’s 40-year commitment to Washburn is a reflection of his belief in education and what it can do for a person. He backed up his commitment by creating the Professor Gary Baker Finance & Economics Scholarship for Washburn students and supporting the university in many other ways.

“I created the scholarship to show my own children and grandchildren that education is important,” said Baker, who has four children and 10 grandchildren. “My family is my proudest accomplishment, and education got them where they are today.”

Outside of the classroom, Baker worked extensively with longtime professor of finance Jim Eck. They created two consulting firms, researched and wrote dozens of published journal articles, wrote two books, taught continuing education courses and regularly testified in court as economic experts. Their work made Washburn known on a national and international level, as lawyers in all 50 states and five countries retained them for their economic expertise. In retirement, Baker plans to continue consulting and updating his books.

“When he would testify, he could really get the attention of the jury because of his personality,” Eck said. “He carried that over into the classroom. The students really like him because of his confidence, sense of humor and smile – it’s very infectious.” 🧢

TEACHING AWARDS

1979 – Merit Teaching Award

1980 – Faculty Certificate of Merit

1993 – Ned Fleming Excellence in Teaching Award

1998 – Outstanding Contribution to “Business and Economic Society International”

2005 – John and Betty Dicus Excellence in Teaching Award

2010 – Student Life Achieving Excellence Award

2013 – Washburn Alumni Association Col. John Ritchie Award

SOME AREAS OF WASHBURN PHILANTHROPY

- Professor Gary Baker Finance & Economics Scholarship
- Washburn University Football Suite Fund
- Washburn University Memorial Fund
- Trees Project Fund
- Ichabod Athletics Scholarship Fund
- Washburn Alumni Association
- School of Business Dean’s Fund for Excellence
- Billie Jean Bergmann Business Scholarship Fund

BY THE NUMBERS

40 YEARS OF TEACHING

23 STATES IN WHICH PRESENTATIONS WERE MADE

8 FOREIGN COUNTRIES IN WHICH PRESENTATIONS WERE MADE


1 SABBATICAL SEMESTER

1 SEMESTER HE DIDN'T TEACH NIGHT CLASSES

TRANSFORMATIONAL TRIP TO PERU

Scholarships, gift help Washburn students study abroad

By Jeremy Wangler • jwangler@wufoundation.org



The study abroad trip to Peru included several Washburn University professors and 15 students. The group experienced the country for 11 days, including visits to Lima, the Amazon rainforest and Andes Mountains. Photo by Marydorsey Wanless

Peru's architecture and biodiversity provided inspiration for 15 students studying abroad this summer with the Washburn Department of Art.

One learned new pottery techniques. Another will use bugs she saw as imagery for her painting. They all saw art, architecture and nature in 11 days traveling from the coastal city of Lima to the low-lying Amazon rainforest and to points in the Andes Mountains between Machu Picchu and Lake Titicaca reaching 14,000 feet.

Students provided some of their own funding for the trip. The rest was made possible by Washburn Transformational Experience scholarships and a private gift from longtime art supporter John Adams, honorary doctor of humane letters '08.

The adventurers left Topeka on May 18 and were on a downstream journey into the Amazon the next day. A remote lodge was their rainforest home where they saw monkeys, toucans and macaws in the trees and tarantulas, frogs, army ants and horned crickets on the forest floor. The creepy crawlies didn't bother junior art major Amber Aylor, Perry, Kansas. Insects already appear in her work.

"You don't expect to see them in nature after seeing pictures in books," she said.

A blue morpho butterfly and an elephant beetle she encountered will both likely make it into her portfolio. After spending two nights in the rainforest, they set out for the Andes and Machu Picchu, a city built in the 15th century, abandoned before conquistadors ever found it and left untouched until 1911. The architecture still blends perfectly with the mountainsides it was built on.

"It was just like the pictures you've seen," said Marydorsey Wanless, a faculty trip leader and associate professor of photography who retired after the spring semester. "Then you got up close and could explore it on your own. I enjoyed watching the students in awe."

Ryan Caldwell, a ceramics major from Topeka who graduated two days before departure, was glad he had a chance to see the Inca handiwork.

"I was mesmerized by the skill it took to build that up on a mountain," he said.

A bus ride through the Andes then took them to Lake Titicaca, the largest lake in South America and one of the

highest navigable lakes in the world. They toured the islands and got their biggest glimpse of native culture on the trip.

They returned to Lima the next morning and spent some time exploring the capital city before returning home.

While Aylor coveted the bugs, Caldwell enjoyed playing with the dirt. He met local artists and learned techniques for burnishing clay with a stone and drying it in the sun.

Wanless hopes all her students had a chance to see and learn something different.

“We saw crafts, textiles, pre-Columbian art and ceramics,” Wanless said. “We learned how they built their reed houses on handmade reed islands, and how they constructed their boats. Hopefully, all that inspired the students.”

Adams, 93, is a retired architect from Topeka who has supported fine arts at Washburn for nearly 30 years. His contributions of more than \$350,000 have made student travel and other fine arts initiatives possible through the years, and he is including a generous gift for Washburn in his estate to continue funding art scholarships and travel.

“I hope my gifts allow the students to have the same appreciation I had seeing different styles of artwork,” Adams said. “I’ve always been an enthusiastic traveler, but I can’t do it now as I would like.”

He admits a trip through the rainforest may not be for him anyway.

“I’m not a snake person,” Adams said.

Aylor had never flown or seen the ocean or mountains. This trip checked all those items off her list.

“I give a humongous thank you to those who give because I wouldn’t be able to do this otherwise,” she said. “I’m more aware of what’s out there and have seen that there is so much more to experience.”

Caldwell agrees.

“There are so many things about a culture that can inspire you,” he said. “Not necessarily to make art in that particular style, but to make you a more rounded person. It’s important to put that into your work.”

After 11 days of history, nature and extreme altitude changes, Wanless’ 16 years of teaching photography at Washburn came to an end in perhaps one of the most picturesque countries in the world.

“I’ve been so lucky to have the greatest job ever,” she said. “The people in the art department and at Washburn have been so wonderful to work with. To cap it with this trip is something I’ll never forget.” 🐼



Washburn Transformational Experience scholarships and a gift from longtime supporter John Adams helped students fund the trip. Adams received an honorary doctor of humane letters from Washburn in 2008. *Photos by Marydorsey Wanless*

ON PAGES 43-44

Glenda Taylor, professor and chairwoman of the Department of Art, was one of the faculty members who traveled to Peru with Washburn students. Taylor died June 7 in a bicycle accident. Read about Taylor and the impact she had at the University on pages 43 and 44.

EXTREME ELEVATION

Topeka – 945 feet

Lima – Sea level

Amazon Rainforest – 600 feet

Cusco – 11,152 feet

Machu Picchu – 7,970 feet

Andes highest point on the trip – 14,150 feet

Lake Titicaca – 12,556 feet

(listed in order of their itinerary)



AT HOME IN TOPEKA

Recent alumnus continues to make an impact
in the community, at Washburn

By Ernie W. Webb III • ernie.webb@washburn.edu

Angel Romero Jr. learned about Washburn from a counselor at Junction City High School. A few years later, he chose Washburn and now has two degrees from the University: a bachelor of arts and a juris doctor.

Angel Romero always has been at home in Topeka, first as a student at Washburn University and now as a resident dedicated to “building Topeka into the kind of community I want it to be.”

Romero, who received a bachelor of arts degree in political science in 2010 and a juris doctor degree in 2013, lived in multiple cities before his family settled in Junction City, Kansas.

“I actually was born in Alabama and lived all over before we moved to Kansas when I was in sixth grade,” said Romero, a project specialist for the Kansas Board of Regents. “When I graduated from Junction City, that was the longest we’d lived in one place. Now, Topeka is the longest I’ve been in one place. This is home.”

A successful student in high school, Romero discovered Washburn when a counselor at Junction City

High School recommended a leadership camp at the University in the early 2000s. That time on campus was all he needed to decide where he wanted to attend college.

“It was during the summer between my freshman and sophomore year of high school, a weeklong camp and we stayed in the Living Learning Center, which was new and was just like staying in a really nice hotel to me,” he said. “I fell in love with the campus. I started comparing Washburn to other colleges, and they just didn’t match up. That camp was run by students here, and I got to see what the college experience was like. I knew where I wanted to go at that point.”

Romero arrived at Washburn in 2006 and thrived immediately, immersing himself in campus life as a student and leader. He was a member of Washburn Student Government Association, among many other student groups, and participated during the early stages of Heartland Visioning, an initiative to grow the city and improve the quality of life in the community.

“One of the best pieces of advice I was given was to step outside of my comfort zone, and I tried to do that,” he said. “The first semester of college can be overwhelming. It’s incredibly exciting. I liken it to drinking from a fire hose because there’s so much to take in. You really have to learn to manage your time and balance things.”

Romero’s extensive involvement in the community began with Heartland Visioning and expanded to include multiple projects. He participated in Leadership Greater Topeka in 2010 and co-founded Top City Live, a group that was dedicated to connecting Washburn students to the community, while attending the School of Law.

Romero, who was a recipient of the Greater Topeka 20 Under 40 award in 2011, continues to serve the community in a number of capacities, including as a member of the board of the Topeka Civic Theatre, Washburn Alumni Association’s Young Alumni Council and Fast Forward Topeka, which provides young professionals the skills, connections and education to integrate as leaders.

“It is tremendous to see our graduates, people like Angel, making such an impact in our community,” said Jerry Farley, president, Washburn. “Their commitment to making Washburn and Topeka a better place, a place where people want to live and thrive, is one of the reasons we have such a bright future.”

Romero credits his time at Washburn for his success and commitment to the community.

“My biggest fear when I started college was fitting in,” he said. “In the first couple of weeks, I fell into a groove. I was comfortable here and felt at home. I realized I fit in very well, and I loved my time at Washburn. I want to work to ensure people have a positive experience at Washburn and in Topeka. That’s extremely important to me.” 🦋

ABOUT ANGEL ROMERO JR.

Education: Bachelor of arts, political science, Washburn, 2010; juris doctor degree, Washburn School of Law, 2013

Occupation: An attorney, Romero is a project specialist for the Kansas Board of Regents

Family: Father Angel Romero Sr., an ROTC instructor at Topeka West, and mother Linda

Favorite music: Everything from musicals to rock to rap

Favorite TV show: “House of Cards”

Favorite movie: “Argo”

ABOUT THE YOUNG ALUMNI COUNCIL

Formed in 2014, the Washburn Alumni Association’s Young Alumni Council is a group of alumni under the age of 35 whose goal is to connect young alumni to the Alumni Association and Washburn community.

The council meets periodically through the year to share ideas about promoting the Alumni Association to young alumni.

“(Young alumni) were looking around as we made the transition from student to alumni and thought we could help getting younger alumni involved, so I think a focused effort like the council is a great idea,” said Angel Romero. “We’re still in the early stages, but we’ve got a lot of good ideas and are in the process of prioritizing those. It’s exciting to see so many people committed to this. I know I’ve learned a lot about the Alumni Association and how much it has to offer.”

MEMBERSHIP

- Did you know that alumni receive a complimentary membership for the first year after receiving their degree? The complimentary membership includes all of the benefits of regular membership, including more than 200 discounts at local and national businesses, free admission to After Hours and football tailgate parties and a number of networking opportunities. Register for a complimentary membership at washburn.edu/alumni-grad.
- Memberships for recent graduates (must have received a degree from Washburn five years ago or less) are \$15 per year. Recent graduates also can register for a five-year membership for \$60. Read more about and register for a membership at washburn.edu/alumni-membership.



CONTINUING A FAMILY LEGACY

Alumni Association scholarship recipient says Washburn 'is in our blood'

By Ernie W. Webb III • ernie.webb@washburn.edu

Glynnis Debenham is the latest in a long line of Ichabods that includes her grandfather, parents and a sister. The Alumni Association legacy scholarship recipient is the vice president of membership and marketing for Washburn Students Today, Alumni Tomorrow, a member of Delta Gamma and the president of the Panhellenic Council.

As a little girl, Glynnis Debenham often attended Washburn basketball games decked out in a cheerleading outfit.

As the daughter of Washburn alumni Glenda Cafer, bba '83, and David Debenham, jd '80, and granddaughter of longtime basketball coach Glenn Cafer, being an Ichabod came naturally.

"Washburn is a tradition in my family," Glynnis Debenham said. "I grew up with Washburn, and I've always loved Washburn. It's in our blood."

Not surprisingly, her choice for college was an easy one.

"Washburn was the only school I applied to," she said. "There was never a thought that I'd go anywhere else. My parents always told me I could go wherever I wanted to, but I wanted to go to Washburn. I liked the fact that I'd get more time to work with professors and knew I'd be more comfortable."

A junior pursuing a bachelor of education degree with an emphasis in early childhood education, Debenham has settled in nicely at Washburn, immersing herself in life on campus. In addition to attending classes, she is a member of Delta Gamma and

president of the Panhellenic Council.

Debenham balances those responsibilities with working at the Alumni Association and as a summer orientation counselor. She also is vice president of membership and marketing for Washburn Students Today, Alumni Tomorrow, the Alumni Association's student group.

"My parents raised us to have a good work ethic, and I'm grateful for that," she said. "We were taught that if you wanted something, you have to earn it, and I've always remembered that. I think it's important to be involved."

Debenham is one of 70 students who received a legacy scholarship from the Alumni Association for the 2015-16 academic year. The scholarships are funded by the organization's 5K Bow Tie Run and Campus Walk, license plate program, gifts from individual donors and earnings from the Alumni Association scholarship fund established in 1944.

Debenham's family has several Washburn alumni, including her parents, uncle Doug Cafer, bba '86, and

aunts Sheri Cafer, ba '98, and Mitzi Cafer Rogers, ba '80. Her sister, Lindsey Debenham, is a student at the Washburn University School of Law.

"This is where my grandpa coached for so many years; this is where my mom and dad and aunts and uncle went to school. I feel blessed to be here," Glynnis Debenham said. "I'm very grateful to receive a scholarship from the Alumni Association. Scholarships really help to ease the

financial obligation of going to college."

Though she attends Washburn at a time when multiple new facilities are being built, Debenham noted the history of campus as one of the reasons she enjoys attending college here.

"I like to think when I walk through the halls that my family walked down the same halls," she said. "I think that's special. It gives me a great sense of pride." 🏃

DIFFERENT NAME, SAME FUN



For years, alumni and friends have supported the Alumni Association scholarship fund by participating in the Fun Run and Campus Walk. In 2015, they'll have the opportunity to continue supporting legacy scholarships Oct. 3 in the Bow Tie Run.

Consider it a formal name for an informal event. The Alumni Association board of directors recommended the name change, but the event won't change much otherwise.

"It will continue to be a 5K run and 2-mile campus walk," said Susie Hoffmann, director, Alumni Association. "Our alumni

and friends have done a terrific job supporting this event, and we know it's one they look forward to. We're thrilled to host a fun, impactful event for the Washburn and Topeka communities."

The 2015 Bow Tie Run begins at 8:30 a.m. Oct. 3 outside of the Bradbury Thompson Alumni Center. Refreshments will be provided after the race in the alumni center. Those running in the 5K will be eligible for awards. First-place medals will be given to male and female winners in various age divisions. There also will be drawings for prizes.

About 200 people participated in the 2014 run and walk, helping to support 70 students who received more than \$30,000 in scholarships for the 2015-16 academic year.

Registration is \$25 for runners and \$15 for walkers. Children age 12 and under can compete for free. Register online at GiveToWashburn.Org/BowTieRun.

Same-day registration will be available beginning at 7 a.m. Oct. 3, but you will be charged an additional \$5 and are not guaranteed a T-shirt.

If you would like to sponsor or volunteer for the Bow Tie Run, contact Hoffmann at **785.670.1643** or **susie@washburn.edu**.

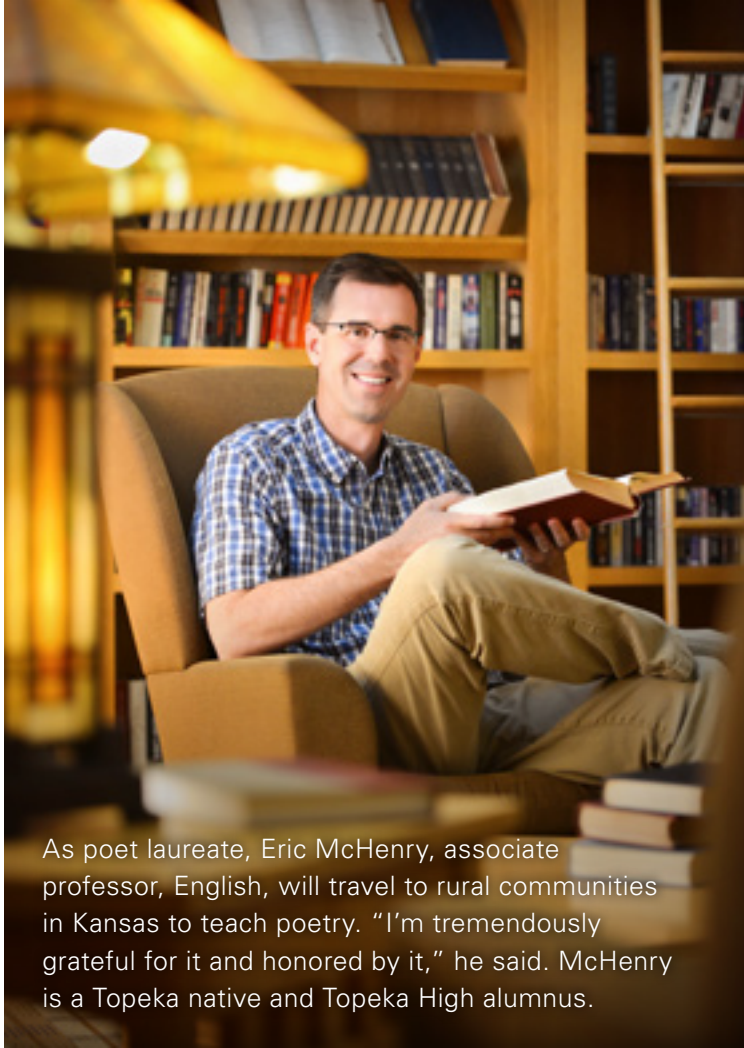
ALUMNI SCHOLARSHIPS

To apply for an Alumni Association scholarship, a student must be a legacy, defined as a student who has a parent(s), sibling(s) or grandparent(s) who is either a graduate of or is attending Washburn University or Washburn Institute of Technology.

To receive a scholarship, applicants must be a member of Washburn Students Today, Alumni Tomorrow (WU STAT), the Alumni Association's student group. In addition, their parent, sibling or grandparent must be a member of the Alumni Association.

WU STAT membership is only \$10 per year and includes 200 discounts at local and national businesses, survival kits during finals week, free admission to After Hours and football tailgate parties, and numerous other networking opportunities. Read about the group at washburn.edu/alumni-students.

Note: The legacy scholarship application won't be open until the end of the fall semester. Read more about our scholarships at washburn.edu/alumni-scholarship.



As poet laureate, Eric McHenry, associate professor, English, will travel to rural communities in Kansas to teach poetry. "I'm tremendously grateful for it and honored by it," he said. McHenry is a Topeka native and Topeka High alumnus.

AN INCREDIBLE HONOR

Washburn professor McHenry named
poet laureate of Kansas

By Grace Hildenbrand • grace.hildenbrand@washburn.edu

Eric McHenry, nationally known poet, Topeka native, Topeka High alumnus and associate professor of English at Washburn University, has always felt the need to defend Kansas and poetry.

Now he has the opportunity to do both as the 2015-2017 poet laureate of Kansas by the Kansas Humanities Council.

"I'm a proud Topekan, and I love Kansas," McHenry said. "Poetry is my other enthusiasm, so this is a position that brings those two things together."

As poet laureate, McHenry will travel to different regions in Kansas and present readings that promote poetry. The program allows for small, rural communities to learn from an award-winning poet.

"It's really set up so as to emphasize giving especially remote communities and places that don't have a ton of resources the opportunity to have the poet laureate come and visit," McHenry said. "It's very much about outreach and grassroots."


McHenry's work has been featured in publications such as Poetry International, Slate and Yale Review.

His poetry reviews have been featured in the New York Times and Columbia magazine.

McHenry won the Kate Tufts Discovery Award in 2007 for his first book of poems, "Potscribbler Lullabies," has been nominated for the Pushcart Prize for poetry seven times and received the Theodore Roethke Prize in 2011.

Being named poet laureate is significant to McHenry. "It's an incredible honor," he said. "I'm tremendously grateful for it and honored by it, and it really does feel like a fantastic affirmation of the work that I've been doing and also a fantastic opportunity."

McHenry's success is a result of hard work, and he encourages a strong work ethic for his students. He also credits his success to being surrounded by great people, including the Washburn community.

"Washburn has been a part of my life for such a long time and it seems sort of miraculous to be offered a job on the faculty," he said. "Everybody is so encouraging, very genuinely engaged by their work, dedicated to their students, and it's an incredibly affirmative environment here." 



ADVISORS EXCEL CO-FOUNDERS OPEN WAKE UP WITH WASHBURN ON SEPT. 3

After working in financial services for several years, Washburn alumni David Callanan (above right), Cody Foster (center) and Derek Thompson had a vision that would redefine the industry.

The trio began to pursue that dream in 2004 with a conversation at the dinner table. Callanan, Foster and Thompson pooled all of their financial resources, which amounted to \$135,000, and opened Advisors Excel the next year.

A decade later, the Topeka-based company is an industry leader assisting independent financial advisors across the United States.

Callanan, Foster and Thompson will kick off the 2015-16 season of Wake Up With Washburn at 7:30 a.m. on Sept. 3, discussing their vision and how they realized their dream.

Callanan received a bachelor of business administration in management and marketing from Washburn in 1998, Foster a bachelor of arts in mass media in 1999 and Thompson a bachelor of business administration in management in 1999.

The second lecture of four in the series is scheduled for Nov. 19. The speaker will be Karen Neilinger, ba '88, bba '89, a real estate developer and independent financial services professional who worked on Wall Street and at Lehman Brothers in London.

Neilinger authored the book "Think Rich! Get Rich! Stay Rich! Your Guide to Financial Empowerment," which educates women about personal financial management and investments.

Neilinger is a member of Delta Gamma.

The third lecture is Feb. 25 with Colby Fries, bba '94, who has worked at Walgreen Co. for 22 years. Fries, a member of Phi Delta Theta, is the director of pharmacy and retail operations at Walgreen. Fries is an executive committee board member for the Leukemia and Lymphoma Society and a member of the American Diabetes Association.


The final Wake Up of the season is April 21 with

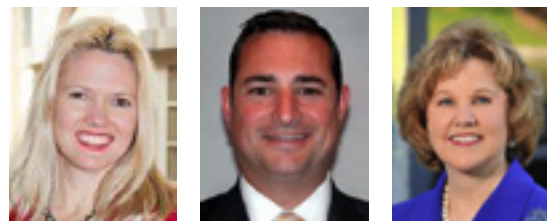
Carol Rogers, a founding partner, president and CEO with Rogers & Company.

Rogers, who received a bachelor of arts in psychology from Washburn in 1971, worked for several years at E.F. Hutton before forming Rogers & Company in 1986. Based in St. Louis, the company is one of the nation's premier wealth management firms and has received several national awards.

Rogers was named broker of the year by Registered Representative magazine in 1997.

Sponsored by the Alumni Association and School of Business, Wake Up With Washburn begins with breakfast at 7:30 a.m. and the presentation at about 8 a.m. The cost is \$10 for members of the Alumni Association and \$13 for non-members. You can attend the lecture free if you choose not to eat breakfast.

For more information about Wake Up With Washburn, visit washburn.edu/alumni-wakeup. To register for Wake Up With Washburn, visit givetowashburn.org/wakeup or call 785.670.1641. 



Karen Neilinger, real estate developer and financial services professional; Colby Fries, of Walgreen Co.; and Carol Rogers, of Rogers & Company

2015-16 WAKE UP WITH WASHBURN

- Sept. 3: David Callanan, bba '98, Cody Foster, ba '99, Derek Thompson, bba '99, co-founders, Advisors Excel
- Nov. 19: Karen Neilinger, ba '88, bba '89, real estate developer, financial services professional, author
- Feb. 25: Colby Fries, bba '94, director of pharmacy and retail operations, Walgreens
- April 21: Carol Rogers, ba '71, founding partner, president, CEO, Rogers & Company

FOUNDATION BOARD ADDS FOUR TRUSTEES

By Kathy Busch • kbusch@wufoundation.org

Four new members of the Washburn University Foundation Board of Trustees took office at the May 2 board meeting. The board is the governing body responsible for implementing the strategic mission of the Foundation to develop and invest private support for Washburn University.



George A. Barton, jd '77

Barton's legal career spans more than 38 years. Since 1998, he has been the principal in the Law Offices of George A. Barton P.C., which specializes in complex business litigation. During

that time, he has devoted the majority of his practice to representing mineral interest owners in royalty underpayment litigation against natural gas producers in Colorado, Kansas and Oklahoma.

During the past 10 years, Barton has been a frequent guest lecturer to Washburn School of Law students on various topics related to the preparation and trial of

business litigation cases.

In 2011, he was named an Alumni Fellow in recognition of his distinguished service to and achievements in the legal community. The School of Law conferred an honorary doctor of law on him in 2015.

He received a bachelor of arts from the University of Pennsylvania, Philadelphia, in 1973 and graduated magna cum laude from Washburn University School of Law in 1977. While at Washburn, he was a member of Phi Delta Phi and executive editor of the law journal.

In 2009, Barton and his wife created the George and Theresa Barton Law Scholarship Fund.

Barton grew up in Kansas City, Missouri. He and his wife, Theresa, have two children and one grandchild.



Deanna (Dee) Smelser-Bisel, bba '70

Smelser-Bisel began her career with General Printing & Paper in Topeka as sales manager. Six years later, she landed her first job with Hallmark,

where she held a variety of management positions in Topeka, Osage City and Kansas City, supervising 800 employees as Hallmark's first female production manager.

In 1993, she left Hallmark and opened Minuteman Press franchise in Lawrence, Kansas. Her company earned the designation of a Sustainable Green Printer, one of only 55 in the United States.

Smelser-Bisel serves on the executive board of Printing & Imaging Association of MidAmerica in Dallas, Texas. She was named the PIAMidAm Executive of the Year in 2012. An active member of the Lawrence Sertoma Club, she serves on its leadership team. She has been a trustee for Lawrence Heights Christian Church for several years.

Smelser-Bisel earned her bachelor of business administration degree from Washburn. While at Washburn, she was a member of Alpha Phi sorority and held various offices. She has since served on the School of Business advisory board.

Through an estate gift, Smelser-Bisel will endow a

Ronald and Deanna Bisel Memorial Scholarship that will benefit students wishing to pursue a degree in entrepreneurship and innovation.

Smelser-Bisel and her late husband, Ron, made their home in Lawrence, where she still resides. They have two married children and four grandchildren.



Michael W. Falk, bba '84

A native Topekan, Falk graduated from Washburn in 1984 with a bachelor of business administration in accounting. He earned a master of accountancy degree from Kansas

State University, where he was a graduate teaching assistant and instructor.

After receiving his master's degree, Falk joined Deloitte in Kansas City in the tax practice division. Shortly after becoming a manager at Deloitte, he joined PricewaterhouseCoopers LLP (PwC). Now a partner at PwC, Falk leads the firm's tax services for a number of

clients in a diverse group of industries. In addition, he has overall firm relationship responsibilities for several of the firm's clients.

Falk is active in the Kansas City community. He has served as a board member for several not-for-profit organizations, including Hope House, Camps for Kids, the Kansas City Zoo and the Kansas State University Accounting Advisory Board.

In 2006, Falk and his wife, Linda, established the Falk Accounting Scholarship Fund to provide financial support for future School of Business students. In 2013, Falk was honored as an Alumni Fellow.

Falk and his wife reside in Overland Park, Kansas, and have two children.



Steven W. Weeks, Esq., bs '72

Weeks is a partner in the Cincinnati office of the law firm of Taft Stettinius & Hollister LLP. In his 38th year at the firm, he focuses his legal practice on

the construction and real estate, computer/technology, and health care industries.

He worked for the Kansas Department of Health and Environment in the water quality section for almost two years, and managed a Kansas River water quality study for the National Sanitation Foundation, before leaving for Harvard Law School. He graduated cum laude in 1977.

Weeks has received national recognition for his works including Woodward-White's Best Lawyers in America for 20 years. Marquis, publisher of Who's Who in American Law, Who's Who in America and Who's Who in the World, has listed him in its

directories for more than 15 years. He is also designated as a Leading Lawyer by Cincy Magazine, and has been awarded an AV Peer Review Rating (Preeminent) by LexisNexis/Martindale-Hubbell for many years.

Weeks is a native of Topeka and came to Washburn after finishing first in the Garvey Scholarship competition. While on campus, he was involved in many campus activities including Sagamore and Interfraternity Council. He graduated summa cum laude and Phi Kappa Phi in 1972 majoring in chemistry, with non-major concentration in mathematics and computer science courses as well.

In 2012, he established the Steven W. Weeks Scholarship Fund for future chemistry students.

Weeks is proud of his daughter and two granddaughters living in the San Francisco Bay area, and has several other family members in Topeka and Kansas City. He enjoys golf and working with computers. 🏊

'FOREVER ICHABOD' CAPTURES THE WASHBURN EXPERIENCE

In 1938, the Kaw yearbook unveiled the first artistic representation of the Ichabod, designed by alumnus Bradbury Thompson, ba '34, who enjoyed a long, successful career in graphic design.

The Kaw described Ichabod as follows: "He has courage and enthusiasm, as shown by his brisk walk. He is democratic and courteous, for he tips his hat as he passes. Sincere in his search for truth and knowledge, he studiously carries a book under his arm. His friendly smile makes you like him. He is neatly dressed and fits in well with his generation ... but he adapts himself with equal ease to any change or any age."

More than 75 years later, as the Alumni Association worked with MB Piland Advertising – owned by Martha Bartlett Piland, ba '86 – on a new slogan, that description struck a chord.

Think of the word Ichabod as an adjective. It's a fitting modifier for all the things we love about the University. Whether you've experienced Washburn as a student, parent, friend, faculty or staff member, you're truly Forever Ichabod.

BEING SOCIAL

A quick look at Merriam-Webster's dictionary reveals that social media is defined as "websites and applications that enable users to create and share content or to participate in social networking."

That doesn't quite capture the excitement of social media, especially considering how much of an impact such venues as Facebook and Twitter have had at Washburn.

Take, for example, Founders Day. On the official 150th birthday for the University, Facebook and Twitter served as wonderful outlets for many alumni and friends to interact, talk about and honor Washburn.

Many departments on campus collaborated on social media that day, allowing us to post photos and videos from venues such as the Statehouse, Memorial Union and Cancun, where alumni and friends on the Alumni Association trip posted photos wishing the University "Happy Birthday."

Needless to say, we've come a long way since the days of the Pony Express, telegraph and even connecting to the Internet via dial-up modem.

If you haven't checked out our social media pages, please do so. You'll find that the world literally is at your fingertips.

Visit our Facebook page at facebook.com/washburnalumni and our Twitter page at twitter.com/washburnalumni.


ABOUT CLASS NOTES

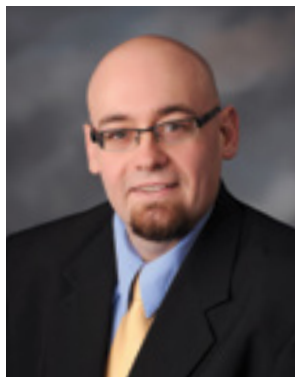
We've received several inquiries about class notes, notably timing. There are occasions when a class note is submitted in March and is published in the fall edition of The Ichabod.

The alumni magazine goes to print three weeks to a month before it hits your mailbox, and we submit it to the designer six weeks to two months before you receive it. As such, the deadline for submitting class notes is three months before the publication date.

ABOUT THE CALENDAR

You may have noticed this edition of the magazine doesn't include a calendar of events. All of the events that normally appear in The Ichabod are listed on the University website at washburn.edu/events.

In addition, the Alumni Association sends reminders in the mail and email for our events. Those mailings, as well as the website, contain the most up-to-date information about Alumni Association events. 



Ernie W. Webb III is the media relations specialist for the Washburn University Alumni Association and the editor of The Ichabod. He received a bachelor of arts in mass media with an emphasis in writing from Washburn in 1998. Contact Webb at 785.670.2303 or ernie.webb@washburn.edu.

A NIGHT TO REMEMBER

Washburn Night at the K provides University with opportunity to display its pride

By Ernie W. Webb III • ernie.webb@washburn.edu

Ichabod Pride, the defending American League champion and a pennant race in the final month of the season are the foundation of a grand slam of an event for the University on Sept. 1 during the first Washburn Night at the K.

The event comes on a night when the Kansas City Royals square off against archrival and four-time defending American League Central Division winner Detroit at 7:10 p.m. in Kauffman Stadium.

Washburn Night at the K is made possible for the University and the School of Law by Advisors Excel, Midwest Health, Kuckelman Torline Kirkland Lewis, Nell Hill's, Hutchins & Haake LLC and Polsinelli.

"This is a wonderful opportunity for our alumni and the Washburn community to experience a memorable night in Kansas City," said JuliAnn Mazachek, president, Washburn University Foundation. "We are fortunate to have the generous support from alumni and alumni law firms in the region to make this event possible."

The first 10,000 fans through the gate receive a free, co-branded T-shirt, and Jerry Farley, president, Washburn, is scheduled to throw the first pitch before the game begins. Washburn students will sing the national anthem and during the seventh-inning stretch.


The Kansas City market provides one of the greatest opportunities for growth in recruiting potential students for the School of Law and for undergraduate programs across the University's campus, and this event provides an avenue to expand Washburn's visibility.

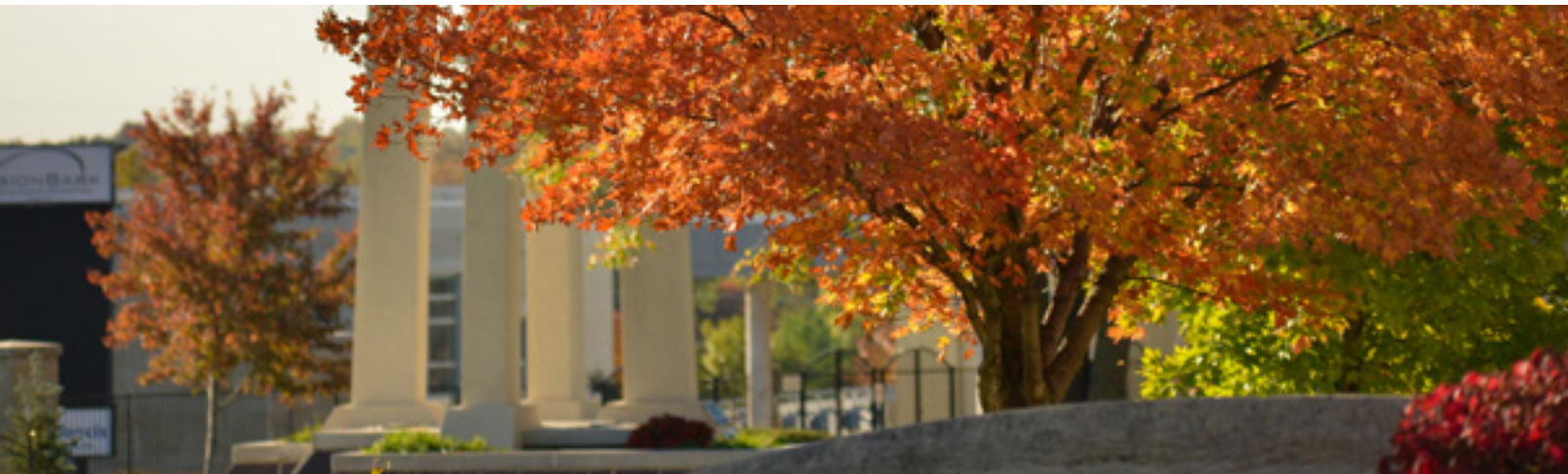
"This will be a tremendous evening in Kansas City for the University," Farley said. "I think we will demonstrate how much pride our alumni and the community have in Washburn."

The Tigers won the A.L. Central four straight seasons from 2011 to 2014, edging the surging Royals by one game last year. But Kansas City earned a playoff bid with an 89-73 record, the franchise's best since 1989.

The Royals made the most of their opportunity, rallying from a 7-3 deficit to win the wild-card game in 12 innings before sweeping the Los Angeles Angels of Anaheim in the A.L. Division Series and the Baltimore Orioles in the A.L. Championship Series.

Kansas City nearly won its first world championship in 29 years before falling to the San Francisco Giants in the seventh game of the World Series.

For more about Washburn Night at the K, including photos, follow the Alumni Association on Facebook at facebook.com/washburnalumni and Twitter at twitter.com/washburnalumni. 





ALWAYS AN ICHABOD

Moddemog living her dream as professor of political science at Washburn

By Ernie W. Webb III • ernie.webb@washburn.edu

Linsey Modellmog, an alumna and assistant professor, knew she wanted to go to Washburn while she was in grade school. The Moundridge native played basketball at Washburn and has been teaching in the Department of Political Science since 2011. She says her students are “like family.”

Choosing a college wasn’t a difficult decision for Linsey Modellmog. It’s a decision she made more than a decade before she graduated from high school in Moundridge, Kansas.

“I remember when I was 6 or 7 years old, my uncle (Ed Browne, jd ’91) visiting us and bringing Washburn T-shirts and hats, and I always thought that was so cool,” said Modellmog, ba ’02, an assistant professor of political science at Washburn. “I always wanted to go to Washburn.”

A standout high school basketball player who won three state championships at Moundridge, Modellmog also wanted to continue playing at the collegiate level. She continued her career with one season at Hutchinson Community College before walking on at Washburn in 1999.

“I could have played around my hometown at an NAIA school, but I’m very competitive and wanted to play at as high a level as I could,” she said. “There was never a question where I was going to go when I decided to leave junior college. I was going to Washburn.”

AS A STUDENT

Moddemog played for Coach Patty Dick for one season and her last two seasons for current women’s coach Ron McHenry. During her career at Washburn, she was a part of a team that blossomed into an MIAA (Mid-America Intercollegiate Athletics Association) contender.

“Linsey competed every day for what she got,” McHenry said. “Linsey competed as hard or harder than any player I had! She was a great teammate and a joy to coach.”

Balancing the rigors of life on the court and in the classroom, Modellmog excelled. She played in 59 games during her career, including all 30 during a 23-7 campaign in 2001-02.

She made the MIAA Commissioner’s honor roll, originally majoring in pre-law before studying political science and history. She even fit a part-time job at Home Depot into her schedule.

“It was a busy schedule, very busy, but that is something as a student-athlete you expect and embrace,” she said. “I thought I wanted to be a lawyer, but I just

loved political science and history and decided I wanted to be a professor. And there was never any doubt where I wanted to teach – Washburn.”

HER CAREER PATH

Several professors made an impression on Modellmog. Among those was Bob Beatty, professor, political science, who encouraged her to pursue a career in higher education.

“I had Linsey in my classes, and it was a pleasure because she was always so enthusiastic and hard-working,” Beatty said. “The same is true of her as a professor. She brought great energy into our department, and she has already had a great impact on the students.”

Moddemog said she chose to teach political science because it merged two of her favorite subjects: politics and history.

“The great thing about political science is you get to talk about the history and about current event issues,” she said. “I really enjoy talking about what’s going on now and what led to it.”

IMPACT IN CLASSROOM

After receiving a bachelor of arts in history in 2002, Modellmog attended the University of Kansas, where she graduated with a master of arts and doctor of philosophy in political science.

Washburn had an opening for a lecturer of political science shortly after she received her master’s degree, and she began to teach in the department in 2011 while completing her doctoral degree. She eventually became the department’s first female professor.

“(The hiring of) Dr. Modellmog is the best serendipitous event that has happened to this department in the 21st century,” said Mark Peterson, professor and chairman, political science. “Her rapport with students is outstanding.”

Moddemog said she hopes to have the same impact on her students that the professors she now works with had on her while she attended Washburn.

“I love the students. The students here are hard-working and care,” she said. “They’re like family to me. The wonderful thing about being a professor at Washburn is that you see these students all the time. You work with them; you get to see them grow and learn. Washburn is a very special place.”

Former student Joe Pilgrim, ba ’13, said Modellmog contributed to his success as an undergraduate and School of Law student.

“Dr. Modellmog is a great professor because she is passionate about politics and government and her passion shows in the classroom: it is infectious, and she makes you want to learn about those things,” he said. “Her personal interest in the academic and personal growth of her students was an incredible thing to experience. I will never forget Dr. Modellmog and what she has done for me.” 🏃



Linsey Modellmog says about Washburn: “I love the students. The wonderful thing about being a professor at Washburn is that you see these students all the time. You work with them; you get to see them learn and grow. Washburn is a very special place.”

ABOUT LINSEY MODELMOG

Hometown: Moundridge, Kansas. Modellmog was a star in several sports, helping her high school team to three state basketball and one state volleyball championship.

Education: Bachelor of arts from Washburn, master of arts and doctor of philosophy from the University of Kansas.

At Washburn: She majored in history and political science and was a point guard for the women’s basketball team, which went 23-7 and earned a bid to the NCAA Division II tournament during her senior season in 2001-02.

Family: Husband, Nick, and sons Oliver, 5, and Harrison, 3.

THE RIGHT COURT AND COURSE

Tennis and golf facility projects underway

By Jeremy Wangler • jwangler@wufoundation.org



Renovations for the tennis court project include a native-stone wall and scoreboard on the west end that displays scores from all six courts. Future plans for the facility include elevated grandstands. *Rendering submitted*

Lance Lysaught spent his days playing and watching tennis at Washburn thinking about how certain changes would improve the student-athlete and fan experience.

Now, as head coach, he and golf coach Jeff Stromgren, also a former player, will see the visions they have for their programs come to life.

The Washburn University Board of Regents recently approved plans to renovate the Washburn Tennis Complex and build an indoor practice facility for the golf team to use at Topeka Country Club. Fundraising began this spring, and both projects should move to the design and construction phases this fall and next spring.

The tennis renovations include a native-stone wall and a scoreboard on the west end that will

show scores from all six courts. New fencing and windscreens will be added. Future plans, as the campus master plan moves forward, include elevated grandstands on the north end that will give fans prime views of every court.

Lysaught, ba '96, said the facility will go along with the look and style of other projects on campus.

"It's a multi-faceted improvement for our student-athletes, alumni and fans," Lysaught said. "I'm probably most excited about the atmosphere and the level of professionalism this can bring to the program. I used to

think, while playing or watching tennis here, wouldn't it be cool to have a grandstand here and a wall and a scoreboard there."

Though it's not on campus, the golf facility will have a similar impact. Stromgren, a '80 grad, said the facility will give student-athletes an advantage when other teams haven't yet been outdoors.

"This will really enhance the opportunities for our players," he said. "To get to the NCAA tournament, you have to play well all season, including in early spring."

The 4,000-square-foot building will have five bays that open to allow the golfers to hit onto a driving range while protecting them from rain and snow. There will also be a 66-foot-wide chipping and putting green made from synthetic turf.

Practices start in February with the season starting in March.

"I've done a lot of shoveling snow off ranges and putting areas," Stromgren said. "With this facility, obviously we wouldn't have to do that."

Washburn will have an ownership agreement with the club, and members will be allowed to use three of

the hitting bays during certain times. The building will have Washburn logos and highlight All-Americans and other accomplishments on the walls.

Both projects are being paid for by private fundraising and are expected to cost about \$300,000 each. The projects are a way to get former players and supporters excited and engaged.

"We are so grateful for the support we have seen already from alumni and friends for these projects," said JuliAnn Mazachek, president, Washburn University Foundation. "This is such a great opportunity to improve the experience for our student-athletes and showcase our strong athletic programs."

Current and future Ichabods will benefit from the upgrades.

"When we show recruits the renderings, their eyes get big," Stromgren said. "When we actually have a building to show them, it should create even more enthusiasm and excitement."

Lysaught had the same feelings.

"If we want our program to stand out, we want our facility to stand out," he said. 🧢



The golf facility will be located at Topeka Country Club. The 4,000-square-foot building will have five bays that open to a driving range and an indoor 66-foot-wide synthetic turf chipping and putting green. *Rendering submitted*



‘A BALANCING ACT’

Basketball star North uses time away from court to build foundation for career

By Jeremy Wangler • jwangler@wufoundation.org

Alex North, left, was a star on and off the court at Washburn. He finished engineering courses in four years and played for the basketball team during a fifth year after suffering a concussion during his junior season. North said Keith Mazachek, coordinator of Washburn’s engineering transfer program and lecturer in the physics and astronomy department, provides students with a perspective on what they need to know and how it relates to the real world.

Alex North’s dominating presence on the basketball court was noticeably absent three years ago. The standout forward from Topeka missed most of his junior season after suffering a concussion early in the year. North, a Topeka native in Washburn’s engineering transfer program, didn’t just sit on the bench and wait to get back on the court. He used the extra time to focus on his coursework, and that planning could culminate in three degrees and a head start in the engineering field.

“My time off the court allowed me to figure out how much time I had to invest in academics and what I could allow to basketball,” North said. “It’s all kind of a balancing act with college athletics. Coming back that next year, I was refreshed and had a different perspective.”

North finished his engineering courses in four years but had one more season of basketball eligibility remaining. He spent last year climbing the scoring and

rebounding record books at Washburn while earning Washburn’s Male Senior Student-Athlete of the Year Award. He also spent the time taking prerequisites toward a master of business administration (MBA) degree. He’s now enrolled in the engineering program at the University of Kansas (KU) and within two years will have a bachelor of science degree from Washburn and a bachelor’s degree in engineering from KU. The option to pursue an MBA will be there down the road.

North realized early at Washburn that he loved math, a subject of little interest to him in high school but so important for careers in his field. The absoluteness of numbers appealed to him.

“There’s always an answer. It’s not really up for interpretation,” he said.

North credits Keith Mazachek, coordinator of Washburn’s engineering transfer program and lecturer in the physics and astronomy department, with guiding him.

“He could put on his industry hat and give us a better perspective on what we really needed to know and how it would relate to the real world,” North said.

Mazachek was in the oil and nuclear weapons industries and also worked for Westar Energy before teaching. He agrees his experience helps students see there is more to engineering than math and science.

“You have to have that creative mind and the need to understand why something is happening,” Mazachek said. “I always liked that about Alex in class.”

North’s basketball scholarships allowed him to play the game he loved while finding passion for a career path.


“Playing basketball taught me so many life lessons, and I think it will make up for the lack of experience I have in hands-on work,” North said.

North is already making up for lost time in the field.

He interned this summer with Kiewit Power in Lenexa, Kansas, and he’ll be teaching math, something he never thought he would enjoy, as a teaching assistant at KU.

He expects his coursework to be tough. That doesn’t bother him. He’ll finish quickly, see what career opportunities are available and consider getting his MBA from Washburn. He already has a head start.

“If you’re doing something you like doing, it doesn’t really feel like you’re going to the library to study. It doesn’t really feel like you’re trying hard to get into the subjects,” he said.

“Alex is one of those student-athletes who excelled in athletics but also recognized that he’ll be doing something else when he’s 30 or 40 years old,” Mazachek said. “You have to have something to fall back on.” 



A two-time all-conference performer, Alex North ranks fifth in career rebounds with 714 and ninth in 3-pointers with 120. He scored 1,082 points during his career, 15th on Washburn's all-time scoring list. *Photo by Gene Cassell*

WASHBURN ENGINEERING TRANSFER PROGRAM

Keith Mazachek coordinates the Washburn pre-engineering program. Students planning to attend the University of Kansas or Kansas State to receive an engineering degree participate in a 3-2 program, taking three years at Washburn and two at the other institutions. The program results in a bachelor of science degree from Washburn and an engineering degree from Kansas or Kansas State. Students planning to attend another institution begin at Washburn and transfer.

JUNIOR ACHIEVEMENT AT WASHBURN

Area high school freshmen were introduced to engineering and other STEM (science, technology, engineering and math) fields on April 21 during the Junior Achievement Skills to Achieve Symposium held on the Washburn campus. Professionals from Bartlett and West, Westar Energy and AT&T introduced the kids to careers in STEM.

Angela Sharp, senior project manager at Bartlett and West, said her company is “looking at students that we can encourage in STEM areas, to move forward in those types of career paths so they can not only find a career they find beneficial, but also to help them improve our community and world in the things that we provide solutions for.”



A WORK OF ART

Longtime professor Taylor shaped many lives before untimely death

By Ernie W. Webb III • ernie.webb@washburn.edu

Glenda Taylor dedicated much of her life to art and shaping the minds of thousands of students at Washburn, molding a masterpiece of a career as a professor and chairwoman.

A fixture at Washburn since 1987, Taylor died June 7 after a biking accident in southeast Kansas. She was 60 years old.

The beloved professor was honored June 12 during a ceremony at Lee Arena. Hundreds of friends, family, community members and students viewed photos of Taylor, her artwork, cycling gear and other items.

“She always put students and faculty first. She was fair, very compassionate, willing to make hard decisions, wise and forward-thinking, creative and positive in searching for solutions,” said Laura Stephenson, dean, College of Arts and Sciences, and one of several speakers at the ceremony. “She was all these things in the context of her energetic, friendly, forthright and down-to-earth personality. She was a joy to be around. I admired her greatly.”

Taylor was born on June 24, 1954, in Chapman, Kansas, to Gordon and Joyce Taylor. As a child, she

molded her first pieces of artwork from clay on her family’s land. Taylor later graduated from Chapman High School and received a bachelor of arts from Bethany College, master of arts from Emporia State University and master of fine arts from Kansas State University.

She began her career in higher education as a lecturer at Bethany in 1982 and taught at Barton County Community College from 1984 to 1987. Taylor spent the next 28 years at Washburn and was chairwoman for 17 years, including during the construction of the Art Building, which opened in 2005.

“Some of my earliest memories of working with her involved discussing, planning and seeing the new art building through until its completion,” said Jerry Farley, president, Washburn. “She was very proud of that achievement, which she should have been. When we encountered difficulties on the project, she was always the driving force behind some creative solution to solve that problem.”

Taylor taught numerous courses at Washburn, including ceramics, sculpture and art education.



Former student and alumna Eleanor Heimbaugh, left, spoke June 12 during the University's celebration of Glenda Taylor's life. Taylor, top middle and top right, was a driving force in the construction of the Art Building and submitted several pieces for the Art en Plein Aire Auction in 2012.

She was a mentor to hundreds of students, including Eleanor Heimbaugh, an artist who received a bachelor of fine arts from Washburn in 2013.

"Students were Glenda's No. 1 priority. Glenda touched many people's lives in a positive way as a dedicated teacher, department chair, athlete and passionate leader in her community," Heimbaugh said. "She always gave great advice. She once told me all you need is a good night's sleep, good breakfast and a good pair of shoes. And she was right, you know."

Shortly before her passing, Taylor was one of several faculty members who traveled to Peru on a study-abroad trip for art students at Washburn. She was recognized for her work with students in 2013 when she received the Muriel D. Clark Student Life Award.

Taylor's professional service included the Kansas Artist Craftsmen Association and the board of the National Council on Education for Ceramic Arts.


"Glenda was the consummate professor and chair," Stephenson said. "She was a superb teacher, an

extraordinary artist and devoted her service to the art department, to Washburn and her profession."

A gifted athlete, Taylor was a runner and a competitive cyclist. She competed and placed in dozens of bike races and carried the Olympic torch from Lawrence to Topeka before the 1996 Games.

"At the highest level, competitive cycling takes an enormous amount of dedication," said friend and professional cyclist Steve Tilford. "She had over 30 races last year. When you think of all the other things she did, that's amazing."

Taylor is survived by husband Joe Saia, bba '75, a buyer in the purchasing department at Washburn. Other survivors include her parents, brothers Terry Taylor and Roger Taylor, sister Nina Shasteen and a large extended family.

Her family established the Glenda Taylor Memorial Fund through the Washburn University Foundation. Make contributions by contacting the Foundation at 785.670.4483 or online at GiveToWashburn.org. 

CLASS NOTES

Submit your news online at washburn.edu/alumni-notes, post it on Facebook at facebook.com/washburnalumni, or email wualumni@washburn.edu. The deadline for the winter 2015-16 edition of the magazine is Sept. 18. You can read more class notes on Facebook and Twitter at twitter.com/washburnalumni.

1950S

Sen. Bob Dole, ba '52, jd '52, honorary doctor of laws '85, was honored at the Combat Air Museum at Forbes Field in May. A conference room used for the museum's youth education programs was renamed the Bob Dole Education Center and an exhibit area dedicated mostly to aviation is now known as the Bob Dole Aviation Gallery. Dole served in the Army, achieving the rank of second lieutenant before a long career in politics that included the Republican presidential nomination in 1996.

1960S

Thomas Goulding, bs '67, Northville, Michigan, is the chairman of mathematics and computer science at Lawrence Technological University. **Bill Marshall**, ba '61, Colorado Springs, Colorado, was featured in a story about the 50th anniversary of the beginning of the Vietnam War in the Colorado Springs Gazette. Marshall, a former member of the Alumni Association board of directors, is a retired Navy captain who served three tours

during the war. He is a member of Alpha Delta and was a member of student council and Young Democrats. Marshall also played baseball and basketball at Washburn.

ANNIVERSARY

Richard Gibson, bba '68, Cape Coral, Florida, and Darlene Gibson celebrated their 50th anniversary in August.

1970S

Richard Friedstrom, ba '73, Topeka, retired after 42 years at New York Life. He is a Washburn University Foundation trustee and a former president of the Alumni Association board of directors. Friedstrom is a member of Alpha Delta and was a member of Washburn Choir, Washburn Singers and student council. **Russ Hill**, bba '74, Round Rock, Texas, retired as senior director at SAP America Inc. He previously worked at NCR Teradata, Fleming Companies and JC Penney. Hill was a member of the football team and the Catholic Campus Center at Washburn. **Tim Karstetter**, jd '74, McPherson, was admitted to the bar of the U.S. Supreme

Court in March. He is a partner in the firm Karstetter and Bina LLC.

Gregory Lee, jd '78, Topeka, is a partner at Cooper and Lee LLC and an adjunct professor at the Washburn School of Law. **David Moses**, bba '76, jd '79, Wichita, Kansas, is the general counsel for Wichita State University. He previously had a private law practice, Moses and Pate. Moses is a Washburn University Foundation trustee and a former member of the Washburn University Board of Regents. He is a member of Phi Alpha Delta and was an intern in the law clinic.

Dwight Rahmeyer, jd '76, Springfield, Missouri, is the chief executive officer and senior trust counsel for the Trust Company of the Ozarks. He is a member of Phi Delta Phi and was an intern in the law clinic at Washburn.

Susan (Campbell) Turner, ba '73, Topeka, is a retired educator who taught in Topeka public schools for 32 years. She is celebrating her 50th year as a member of Delta Gamma.

1980S

Ben Bauman, ba '85, Holton,

Kansas, is the director of the public affairs office for the Adjutant General's Department.

Thomas Inkelaar, jd '88, Lincoln, Nebraska, is an attorney in private practice with offices in Lincoln and Omaha. He was an intern in the law clinic at Washburn.

Brenden Long, bba '82, jd '85, Topeka, is the vice president of human resources for Midland Care Connection. He formerly worked as city attorney for Topeka and is a member of Alpha Delta.

Keith Mark, jd '86, Mission, Kansas, is an attorney at Mark & Burkhead Attorneys at Law. He is a member of Phi Delta Phi and was an intern at the law clinic at the School of Law.

Kim (Mahan) Moore, ba '84, jd '87, Wichita, Kansas, is the director of workforce, professional and community education at Wichita State University. She is a member of Kappa Alpha Theta and Phi Kappa Phi and was a member of Campus Activities Board and student council at Washburn.

Suzanne (Radelt) Plante, bsn '86, Whitmore Lake, Michigan, is a nurse practitioner at the University of Michigan Sub Acute Service.

She is a member of Sigma Theta Tau.

Arlene (Eagan) Talbert, b ed '85, Olathe, Kansas, is a computer and physical education teacher at Holy Name School and Christ the King School in Kansas City, Kansas. She is a member of Alpha Phi and was a member of Catholic Campus Center at Washburn.

Richard Vaughn, bba '88, Overland Park, Kansas, is the director of channel sales for Toshiba's Business Solutions Division. He has held several positions at Toshiba, including major account manager. He is a member of Alpha Delta.

Joni (Gilliand) White, aa '84, ba '91, Holton, Kansas, retired after teaching for 24 years at Holton High School. She was an English teacher.

Steven Wright, ba '88, Olathe, Kansas, is a supervisor in customer service for Farmers Insurance Group. He was a member of the Washburn Review and Kaw staff at Washburn.

1990s

Lori (Button) Leshner, bba '91, Lawrence, Kansas, is a senior accountant at Summers, Spencer and Company PA.

Anne Canter, jd '92, Duluth, Georgia, is a partner at Bradley Arant Boult Cummings LLP. She was a member of Moot Court Council and the board of editors of the law journal at Washburn.

Bryan Eklund, bs '96, Topeka, was promoted to vice president of collections and fraud prevention at CoreFirst Bank and Trust.

Mark Harvey, ba '91, Olathe, Kansas, is the director of the master of business administration program at the University of St. Mary in Leavenworth, Kansas. He has worked as professor at several schools, including the University of Wales, University of Birmingham, London School of Economics, Duke University and the University of Kansas. Harvey was a member of Washburn Student Government Association and the Washburn Review staff.

Teresa (Longberg) Jenkins, ba '93, Topeka, is a shareholder at Jones Huyett Partners. She joined the agency in 2012 as an account executive.

Sam Limo, mba '98, Irving, Texas, received a doctor of philosophy degree from Indiana State University College of Technology.

Jacqueline (Cobos) Munoz, bba '92, Topeka, is a registered paraplanner at Clayton Financial Services.

Mike Ritter, bs '92, Dayton, Ohio, was promoted to vice president and chief security officer at MacAulay-Brown Inc.

Linus Thuston, ba '92, jd '95, Chanute, Kansas, is the Neosho County attorney. Thuston is a member of Sigma Phi Epsilon and was a member of the student division of the Kansas

Trial Lawyers Association and an intern in the law clinic at Washburn.

2000s

A.J. Bingham, jd '08, Austin, Texas, was ranked No. 6 on the list of 20 rising stars in the "Capitol Inside" 2015 Texas lobby power rankings. He was a member of the Black Law Student Association, Business Law Society and Washburn Student Bar Association.

Stephanie Buntten, bba '00, jd '02, Topeka, is the budget and fiscal officer for the Kansas Supreme Court. She previously worked as a certified public accountant at Mize Houser and Company and as a research attorney for Judge Henry W. Green on the Kansas Court of Appeals.

Paige Caudle, bba '05, Topeka, was promoted to officer and senior accountant at CoreFirst Bank and Trust. She was a member of the Accounting Society at Washburn.

Bre Chamoff, bsn '09, Avondale, Arizona, is a pediatric nurse practitioner at Banner Cardon Children's Medical Center. She is pursuing post-graduate certification in acute care at Rush University in Chicago.

Bill Crooks, bba '01, mba '05, Olathe, Kansas, is the director of the customer support center for Grundfos. He was an all-region and all-conference baseball player at Washburn.

Tara (Kemp) Cunningham, ba '00, Phoenix, Arizona, is associate dean of admissions and recruitment and co-director of diversity and inclusion at the University of Arizona College of Medicine – Phoenix.

Tim Dupree, jd '04, Kansas City, Kansas, was the commencement speaker at Kansas City Kansas Community College in May. He is a judge in the 29th Judicial District.

Billie Jean (Bergmann) Graham, bba '09, Topeka, was promoted to disbursement and expense assurance manager in the finance department at Burlington Northern Santa Fe Railway. She was a member of Washburn Student Government Association, Phi Kappa Phi, Campus Activities Board, Quoffee Twak Book Club and Beta Alpha Psi at Washburn. Graham is a member of the board of directors for the Alumni Association.

Paula Langworthy, jd '06, Wichita, Kansas, is an attorney at Triplett, Woolf and Garretson LLC. She was a member of the Native American Law Student Association at Washburn.

Jessica (Williams) Lehnerr, ba '02, msw '05, Topeka, is the executive director of Court Appointed Special Advocates (CASA) of Shawnee County. She previously worked at Family Service and Guidance Center, Kansas Children's Service

League, KVC Behavioral Healthcare and St. Francis Community Services.

Tiffany (Martin) Shelton, certificate in radiation therapy '05, Baton Rouge, Louisiana, is the director of radiation therapy for the Mary Bird Perkins Cancer Center.

Bryan Smith, ba '03, Sedalia, Missouri, is the athletic trainer for the Sedalia School District.

Ashley St. Clair, bsn '08, msn '11, Rothschild, Wisconsin, is a family nurse practitioner at Langlade Hospital.

Roxane Stueve, b ed '02, Topeka, is an office administrator at Clayton Financial Services.

Mandi Walter, bba '09, Topeka, is the director of marketing and development at Network Computing Solutions. She is a member of the Alumni Association board of directors. Walter was a member of Ad Astra, Washburn Sales and Marketing Executives, American Business Women Association and College Entrepreneurs Organization.

2010S

Mike Amend, m ed '10, Spokane Valley, Washington, is the baseball coach at Central Valley High School.

Chelsea Anderson, bsn '15, Topeka, is a patient sitter at Stormont-Vail HealthCare.

Samantha (Greif) Budden, bsn '11, Merriam, Kansas, is a nurse in the emergency department at Saint Luke's

Hospital of Kansas City.

She is a member of Zeta Tau Alpha and was a member of Bod Squad, Catholic Campus Center, Women's Golf Club, Washburn All Green and Alpha Lambda Delta.

Colin Curtis, ba '12, Annapolis, Maryland, is special assistant to the Senate president in Maryland.

Zac Glenn, bs '14, Topeka, is a software engineer at Heartland Crop Insurance.

Mary (Douglas) Harris, bba '14, Topeka, is a payroll clerk at Burlington Northern Santa Fe Railway.

Brian Hunter, b ed '15, Topeka, is a math teacher at Emporia High School.

Elijah Kennedy, bs '15, Topeka, is a state trooper for the Kansas Highway Patrol. He was a member of the Leadership Institute and performed as the Ichabod mascot while at Washburn. He received the Sibberson Award at commencement in May.

Amy McLaren, aa '15, Topeka, works at Rebound Physical Therapy.

Stephanie Mott, bsw '14, Topeka, is an office assistant and grants specialist in the Shawnee County Commission office.

Barry Muninger, bsn '13, Topeka, is the director of marketing operations for the Kansas Rehabilitation Hospital. He previously worked as a registered nurse and rehabilitation liaison at the

hospital.

Andrew Newcomer, jd '12, Great Falls, Montana, is an attorney at Ugrin, Alexander, Zadick and Higgins PC. He was the articles editor of the law journal at Washburn.

Maranda (Hutton) Rebel, bsn '11, Hays, Kansas, was promoted to charge nurse at the Hays Medical Center.

Adrianna Rollins, bsn '11, Topeka, is a travel nurse for American Mobile Nursing. She was a cheerleader and a member of Mortar Board and Alpha Lambda Delta at Washburn.

Brooke Rollison, ba '13, Leawood, Kansas, was promoted to account executive at GlynnDevins Marketing and Consulting in Overland Park, Kansas. She was a member of Alpha Lambda Delta, Washburn Athletic Bands Association, Residence Council, Bod Squad and Dancing Blues.

Rob Roy Rutherford IV, ba '12, Berryton, Kansas, is senior health care data analyst at Kansas Healthcare Collaborative.

Clifton Sims, certificate in practical nursing '13, Lawrence, Kansas, is a certified nursing assistant at Lawrence Memorial Hospital.

Morgan (Terry) Stebens, bsn '15, Topeka, is a registered nurse at the University of Kansas Hospital.

Andrea Steverson, bsn '15, Topeka, is a registered nurse.

Ryan Ward, bs '11, Lenexa, Kansas, is a general dentistry

resident at the University of Missouri-Kansas City School of Dentistry. In May, he graduated fourth in his class with a Doctor of Dental Surgery degree from the University of Texas Health Science Center at the San Antonio School of Dentistry. Ward played tennis and was a member of Beta Beta Beta and Phi Kappa Phi at Washburn.

Shelby (Schmidt) Ward, bba '11, Lenexa, Kansas, is a talent acquisition partner at FishNet Security on the Sprint Campus in Overland Park, Kansas. She was a member of Washburn Sales and Marketing Executives.

Philip Watson, b music '15, Topeka, was accepted to Berklee College of Music in Valencia, Spain, where he will pursue a master's degree. He was accepted after attending an audition in Boston, Massachusetts.

Kristen (McLaren) Wooten, b ed '15, Topeka, is a sixth-grade teacher at Cottonwood Intermediate School.

BIRTHS

Garrett Love, bba '10, Montezuma, Kansas, and **Caley (Onek) Love**, ba '11, a girl, Abigail Marie, on Nov. 25, 2014. She is the couple's first child. Garrett Love is the Senate majority whip in Kansas, and Caley Love is the director of communications for the Kansas Office of the Securities Commissioner.

IN MEMORY

1930s

Kathryn (Burt) Stuart, ba '35, 101, Parachute, Colorado, on March 3. She was a volunteer for several organizations in Colorado, including the Visitors' Cabin, Mesa Vista Assisted Living, Columbine Home Health and the PEO Sisterhood. Stuart was a member of Delta Gamma and Washburn Players.

1940s

Burdette Backlund, ba '46, 90, Peoria, Illinois, on April 29. He served in the Navy during World War II before a long career in banking. Backlund was legal counsel and senior bank examiner for the Department of Banking in Nebraska and worked for the Dunlap State Bank in Illinois. He was a president of the Illinois Bankers Association and the Independent Community Bankers Association of America. Backlund was a member of Phi Delta Theta.

Rosemary (Mauzey) Borck, ba '42, 94, Chattanooga, Tennessee, on March 2. She was a member of Delta Gamma.

David Gooch, ba '49, jd '51, 91, LeRoy, Kansas, on Sept. 18, 2014. He served in the Army Air Corps during World War II and the Air Force during the Korean Conflict, achieving the rank of first lieutenant. Gooch worked for State Farm Insurance from 1954 to 1991, retiring as assistant vice president of claims.

C. Keith Gustin, ba '48, 92, Overland Park, Kansas, on March 30. He served in the Army Air Corps as a weather officer and worked in the insurance industry at Hardware Mutual, Zurich American Insurance Co. and Home Insurance Co. Survivors include wife **Marilyn (Hale) Gustin**, ba '45, Overland Park; daughter **Marta (Gustin) Huey**, b ed '74, Topeka; and son-in-law **Derek Park**, jd '05, Wichita.

Faye (Hollingsworth) Hubbard, bba '49, 86, Edmond, Oklahoma, on Nov. 6, 2014.

Alfred Knight, ba '41, 95, Tulsa, Oklahoma, on March 12. He served in the Navy during World War II, achieving the rank of lieutenant. Knight was an attorney for more than 50 years, working at Hudson, Hudson and Wheaton; Wheaton, Manatt, Knight and Knight; and Knight, Wagner, Stuart, Wilkerson and Lieber. He also was an adjunct professor of law at the University of Tulsa. Knight was a member of Phi Alpha Delta.

Nancy (Riddle) Madden, ba '42, 94, Burlington, Vermont, on Feb. 7. She was a member of Delta Gamma, Phi Kappa Phi and pep club.

Fred Rausch Jr., ba '48, jd '49, 91, Topeka, on April 5. He served in the Army during World War II and the Korean Conflict, as well as in the Army National Guard and Army Reserves, retiring as a colonel. Rausch practiced law for 60 years, including as legal counsel

for the Kansas Association of School Boards. He was a member of Kappa Sigma and Delta Theta Phi. Survivors include wife **Shirley (Rogers) Rausch**, attendee, Topeka; daughters **Judy (Rausch) Marks**, ba '67, Topeka, and **Nancy (Rausch) Reddy**, bsw '96, Topeka; son **Stephen Rausch**, bba '73, Corona, California; and son-in-law **Mark Reddy**, ba '96, Topeka.

Ruth (McCoy) Rockhold, b music '44, 93, Topeka, on April 7. She was a member of Delta Gamma and the Panhellenic Council.

Bernice (Draut) Testa, ba '40, 96, Raleigh, North Carolina, on Feb. 18. She was a home economics teacher at Junction City High School in Kansas. Testa was a member of Delta Gamma and Washburn Choir.

Richard Vanderwall Sr., ba '49, 93, Fort Wayne, Indiana, on Jan. 17. He served in the Navy during World War II before a career in life insurance. Vanderwall worked at Midwestern United Life Insurance Co. Survivors include niece **Vicki Lesser**, b ed '93, m ed '96, Topeka.

1950s

Charles Azu, bs '55, 79, Bloomfield, Michigan, on March 23. He was a physician in Issele-Uku Nigeria and a trauma surgeon in St. Louis for more than 30 years.

Donald Bliss, b ed '53, 85, Topeka, on Feb. 24. He was a teacher, coach, activities director and administrator at Topeka

High School after serving in the Air Force. Bliss was a squadron commander at Warren Air Force Base in Cheyenne, Wyoming. He was a member of Sigma Phi Epsilon and Air Force ROTC and played football at Washburn. Survivors include wife **Paula (Stuenkel) Bliss**, ba '52, Topeka; sons **Tom Bliss**, bba '84, Overland Park, Kansas, and **Gary Bliss**, ba '78, Topeka; daughter **Linda (Bliss) Thiele**, bs '79, Columbia, Missouri; and brother **Robert Bliss**, bba '58, Kansas City, Kansas.

Dale Cooper, jd '54, 83, Wichita, Kansas, on July 1, 2013. He was an attorney and a member of Delta Theta Phi. Survivors include wife **Collette Cooper**, b ed '53, Wichita. **Dorothy (Caldwell) DeHaven**, b ed '59, 90, Beebe, Arkansas, on Feb. 29. She was an educator for 35 years. Survivors include grandson **Craig Meats**, bs '99, Basehor, Kansas.

William Falk, bba '57, 81, Wichita, Kansas, on May 22. He worked in the insurance industry. Survivors include son **Michael Falk**, bba '84, Overland Park, Kansas, a former Alumni Fellow.

Richard Hein, bba '59, 82, Hershey, Pennsylvania, on Feb. 9. He served in the Coast Guard during the Korean Conflict and worked for the Navy. Hein also worked for Lazarus Department Stores and York Distribution Center. He was a member of the Association of Business Students.

E. Wayne Heshner, bba '51, 86,

Larned, Kansas, on Nov. 28, 2014. He was business manager and acting superintendent of the Larned State Hospital.

James Hesse, jd '50, 92, Wichita, Kansas, on Nov. 22, 2014. He served in the Army during World War II, achieving the rank of second lieutenant. Hesse was a member of Delta Theta Phi.

Survivors include sons **Matthew Hesse**, jd '85, Wichita, **Joel Hesse**, jd '87, Wichita, and **Karl Hesse**, jd '92, Wichita; and daughter-in-law **M. Patricia (Mertes) Hesse**, jd '85, Wichita.

Joseph Lardner, ba '55, 81, Topeka, on Jan. 29. He served in the Air Force before working at J.T. Lardner Cut Stone and Lardner Monuments. Lardner was a member of Alpha Delta. Survivors include daughters **Diane (Lardner) Westling**, ba '82, Topeka, and **Jeannine (Lardner) Fairchild**, b ed '83, Topeka.

Ethel (Pickens) Marinellie, b ed '58, 95, Goodman, Missouri, on Feb. 14. She was a school teacher in California for 40 years.

John Palace Jr., ba '50, 91, Juno Beach, Florida, on April 13. He served in the Army during World War II and in the Air Force National Guard, retiring as a lieutenant colonel. Palace was the recreation director for the Village of Patchogue and worked in life insurance. He was a member of Kappa Sigma, Air Force ROTC, Sagamore, Who's Who Among Students at American Universities and Colleges and the Washburn Review staff, and participated in football and track at Washburn.

Survivors include sons **Thomas Palace**, b ed '79, Topeka, and **Guy Palace**, ba '88, Washington, D.C.

Ronald Robb, bba '53, 87, Topeka, on April 18. He served in the Army during World War II and was co-owner of real estate company Love, Taggart and Robb. Robb served on the Washburn University Board of Regents and was a Washburn University Foundation trustee emeritus.

He was a member of Phi Delta Theta at Washburn. Survivors include daughter **Rebecca (Robb) Dickinson**, ba '77, Wakarusa, Kansas; stepdaughter **Lori Roenbaugh**, b ed '83, m ed '90, Topeka; and grandson **David Wolfe**, jd '08, Lawrence, Kansas. **Mary (Gibbs) Waddell**, ba '55, 82, Topeka, on Feb. 4. She was a member of Zeta Tau Alpha.

Donna (Rich) Wagner, ba '57, 79, Lee's Summit, Missouri, on Feb. 27. She was a fourth-grade teacher in Shawnee, Kansas, and a society writer for the Kansas City Star before owning and operating Greenwillow Farm Antiques. Wagner was a member of Alpha Phi, Phi Sigma Chi, Young Republicans and the Washburn Review staff.

Frank Welsh, jd '50, 93, Naperville, Illinois, on March 11. He served in the Navy during World War II as an aerial photographer before working as a manager at Optical Wholesalers, Illinois Optometrists and the Academy of General Dentistry. Welsh was a member of Delta Theta Phi.

Carl Wilcox, ba '51, 86, Springfield, Missouri, on April

28. He served in the Air Force as a pilot during the Korean Conflict and was a real estate broker.

1960s

Marla (Leuenerberger) Beimforde, ba '60, 76, Camarillo, California, on May 2. She was a social worker for the Ventura County Department of Mental Health and Ventura County Jail, as well as an instructor at the Sheriff's Regional Training Academy and community program director in the Ventura Regional Forensic conditional release program. She was a member of Kappa Alpha Theta, Panhellenic Council, Who's Who Among Students at American Universities and Colleges and spirit squad. Survivors include brother **Jan Leuenerberger**, bba '58, jd '61, Topeka.

Sandra (Linnenburger) Brown, b ed '63, m ed '74, 77, Topeka, on Feb. 13. She was an educator in the Topeka Unified School District and the district's Teacher of the Year in 1993. Survivors include son-in-law **Kyle Ferleman**, m cj '04, Topeka, and daughter-in-law **Constance Brown**, attendee, Topeka.

Lyle Clark, b ed '62, 83, Burlington, Kansas, on Feb. 21. He served in the Air Force, receiving the outstanding airman trophy in 1953. Clark was a principal in elementary and junior high schools before working as an administrative officer of property tax evaluation for the State of Kansas. He was a member of Sigma Phi Epsilon.

Darryl Crumpton, ba '65, 72,

Herndon, Virginia, on Nov. 15, 2014. He worked for the Defense Mapping Agency for 35 years.

Mary (Query) Dawson, ba '65, 82, Wamego, Kansas, on Jan. 2. She taught business at high schools in California and Kansas. Dawson was a member of Phi Kappa Phi.

Maxine (Marx) Dickson, bs '65, 90, The Villages, Florida, on March 8. She was a medical technologist at McPherson Hospital before teaching child development and home economics at Highland Park High School. Dickson was a member of Phi Kappa Phi.

Clellabeth (Clements) Hahn, b ed '60, 77, Overland Park, Kansas, on May 9. She was a teacher in Topeka and Phillipsburg and owned and operated a preschool before working as a case manager for Court Appointed Special Advocates. Hahn was a member of Delta Gamma and Washburn Choir. Survivors include husband **Lowell Hahn**, ba '58, jd '61, Overland Park; son **Brian Hahn**, attendee, Chicago, Illinois; brother-in-law **William Pantle**, ba '58, Baltimore, Maryland; and sisters-in-law **Linaya Hahn**, ba '64, Longmont, Colorado, and **Sherrill Pantle**, attendee, Baltimore.

Darryl Hanson Sr., bba '65, 76, Vandalia, Ohio, on July 5, 2014. He served in the Air Force and worked at Ford Motor Co., Winnebago and Home Depot. Hanson was a member of Delta Sigma Psi.

William Hensley, jd '64, 77, Wichita, Kansas, on Dec. 20. He

was a retired attorney.

Robert Korte, bs '61, 82, Lee's Summit, Missouri, on Oct. 27, 2013.

Arlo Kunkel, bba '60, 77, Charlottesville, Virginia, on Feb. 18. He worked for Ford Motor Co. and as a vice president for Ford New Holland.

Gary Magathan, bs '69, 73, Topeka, on March 19. He worked as a food and drug inspector for the Department of Health and Environment for the State of Kansas. Survivors include brother **Philip Magathan**, bs '76, Olathe, Kansas, and sister-in-law **Janice (Phillips) Magathan**, bba '76, Olathe.

Richard Raugewitz, ba '64, 80, Wellsville, Kansas, on Nov. 8, 2014.

Harland Rieger, ba '61, jd '64, 77, Topeka, on Feb. 4. He served in the Kansas National Guard and the Air Force for 36 years, retiring as a lieutenant colonel. Rieger was an assistant district attorney in Shawnee County and had a private practice for more than 40 years. Survivors include wife **Barbara (Sherman) Rieger**, bfa '64, Albuquerque, New Mexico, and daughters **Cardinal Rieger**, ba '89, ba '90, Albuquerque, and **Turna (Rieger) Burgos**, attendee, Corales, New Mexico.

James Schlegel, bba '65, 81, Bella Vista, Arkansas, on April 15. He served in the Army during the Korean Conflict and was the city/county regional planning director for the City of Topeka for more than 40 years. Survivors include wife **Deanna (Bonnett) Schlegel**, bba '88, Bella Vista, and sons-

in-law **Kevin Terpening**, bba '87, Taylor Lake Village, Texas, and **Arlen Zentner**, bba '93, Berryton, Kansas.

Mary (Wright) Schuster, b ed '64, 82, Topeka, on May 7. She was a teacher in the Auburn-Washburn Unified School District. Schuster was a member of Delta Gamma and Phi Kappa Phi. Survivors include son **Steven Schuster**, jd '85, Kansas City, Missouri, attendee.

James Waddell, bba '63, 75, Topeka, on May 23. He served in the Marine Corps Reserves before working as a coffee buyer for Folgers and working for the State of Kansas. Waddell was a member of Kappa Sigma, Sagamore, Who's Who Among Students at American Universities and Colleges and the Kaw staff. Survivors include wife **Kathleen (Worland) Waddell**, bsw '80, Topeka.

Judy (Williams) Wagstaff, b ed '69, 67, Topeka, on March 16. She was a teacher in the Topeka Unified School District for nearly 20 years. Wagstaff was a member of Zeta Tau Alpha. Survivors include husband **Stanley Wagstaff**, b ed '69, m ed '72, Topeka, son **Justin Wagstaff**, bs '99, Topeka, daughter **Jennifer (Wagstaff) Carter**, b ed '96, and son-in-law **Christopher Carter**, ba '91, Topeka.

Jimmy Walker, jd '67, 73, Pittsburg, Kansas, on April 30. He was the owner of Midwest Tank and Overhead Door.

1970s

Richard Ballinger, jd '77, 62, Derby, Kansas, on Jan. 23. He was a judge for the 18th Judicial District Court. Ballinger was an intern in the law clinic at Washburn.

Fenwick Byrd, bs '75, bsn '82, 66, Topeka, on Feb. 20. He served in the Air Force before working as a medical technologist and registered nurse.

Jane (Wolfe) Clelland, ba '72, m ed '96, 64, Topeka, on March 16. She was a math teacher in the Topeka Unified School District and a textbook consultant for Houghton Mifflin Publishing Co. Clelland also owned a McDonald's restaurant in Wamego, Kansas. Survivors include husband **Robert Clelland**, bba '76, Topeka.

Michael Donnelly, bba '70, 77, Bullhead City, Arizona, on March 4. He served in the National Guard, was a traffic engineer for more than 50 years and owned Phoenix Dragway. Donnelly was a member of the Independent Student Association. Survivors include daughter **Cynthia (Donnelly) Bailey**, b music '92, San Antonio, Texas, brother **Patrick Donnelly**, bs '66, bba '70, Topeka, and sister **Dixie (Donnelly) Wentoch**, bs '67, Overland Park, Kansas.

Ronald Eddy, ba '71, 87, Topeka, on Jan. 26. He served in the Navy during World War II, had an apprenticeship at Burlington Northern Santa Fe Railway and worked in the superintendent of ships office

for 20 years before opening his own business, Studio Arts Frame Shop. Survivors include wife **Celia (Foster) Eddy**, ba '67, Topeka.

Martha (Keller) Fairbank, bsw '72, 65, Topeka, on March 3. Survivors include sister-in-law **Carolyn Keller**, b ed '66, Littleton, Colorado.

Melvin Falck, ba '74, 92, Topeka, in May 2015. He served in the Army during World War II, fighting in the Battle of the Bulge. Falck received the Bronze Star, Purple Heart and Combat Infantry Badge. He worked for Burroughs Corp., taught piano and was a writer. Survivors include son **Terry Falck**, ba '74, ma '95, Topeka, and daughters-in-law **Kathy (Dwyer) Falck**, aa '79, Topeka, and **Debbie Roth-Falck**, bba '74, Edmond, Oklahoma.

Michael Friesen, jd '76, 71, Garden City, Kansas, on April 4. He was a probate and juvenile judge before working as an attorney for 30 years. Friesen was a member of Phi Delta Phi.

Donald Frigon, jd '78, 61, Dodge City, Kansas, on Sept. 5, 2014. He was an attorney. Survivors include father **Bernard Frigon**, ba '53, jd '53, Scottsdale, Arizona, and brother **Bradley Frigon**, jd '81, Littleton, Colorado.

Mary (McIlrath) Hall, m ed '75, 90, Topeka, on March 5. She was an elementary school librarian for the Topeka Unified School District. Survivors include son **Allan Hall**, ba '76, Lawrence, Kansas.

Charles Harrison, ba '75, 66,

Topeka, on April 27. He served in the Navy during the Vietnam War before working at Famous Brands, Physio Technology, Northrop Grumman and the U.S. Postal Service. Survivors include wife **Beth (Summerville) Harrison**, aa '85, Topeka.

Dale Herrick, bs '73, 86, Topeka, on April 19. He served in the Navy before working at Topeka Medical Center, Colmery-O'Neil Veterans Administration Hospital and Holton Community Hospital. **James Huggins**, ba '70, 73, Topeka, on May 14. He served in the Navy before working at Burlington Northern Santa Fe Railway for 30 years.

Lawrence Jaynes, bba '71, 66, Omaha, Nebraska, on March 27. He served in the Air Force and was a reverend in several communities in Nebraska. Jaynes was a member of the Air Force ROTC and Kaw yearbook staff at Washburn.

Robert Kennedy Jr., bsw '73, 64, Topeka, on April 28. He was a social worker, research analyst and information technology supervisor for the State of Kansas for more than 40 years and an adjunct instructor in the Department of Computer Information Sciences at Washburn. Survivors include son **Shane Kennedy**, ba '13, Topeka, and brothers **Mark Kennedy**, ba '78, Hoyt, Kansas, **Carl Kennedy**, ba '87, Acworth, Georgia, and **Kevin Kennedy**, bba '81, Lenexa, Kansas. **Roger Lovelace**, bba '73, 70,

Topeka, on Feb. 4. He served in the Navy before working for the Shawnee County Sheriff's Office, retiring as a captain. Lovelace also served with the Capitol Police.

Survivors include wife **Sandra (Rankin) Lovelace**, ba '77, Topeka. **Phillip Mansfield**, ba '77, 68, Tulsa, Oklahoma, on April 8. He was a member of Alpha Delta. Survivors include sisters-in-law **Janice (Kissinger) Mansfield**, bsn '98, Topeka, and **Roberta (Ready) Mansfield**, bsn '81, Topeka.

Carmen (Wells-Patterson) Perkins, ba '73, 64, Columbus, Georgia, on Feb. 18. She was a teacher for more than 35 years in Kansas and Georgia. Perkins was a member of Alpha Kappa Alpha. **Bissessarnath Ramcharan-Maharajh**, m ed '78, jd '87, 86, Topeka, on March 3.

Edward Schulteis, bba '78, 92, Overland Park, Kansas, on Jan. 16. He served in the Army Air Corps during World War II before owning and operating Colonial Fixture Co. in Kansas City, Missouri. After retiring in 1983, Schulteis became a farmer.

Bill Shuart, ba '73, 68, Lincoln, Nebraska, on April 21. He served in the Navy before working as a clinical psychologist at Madonna Rehabilitation Hospital in Lincoln for more than 30 years. Survivors include brother **Laird Shuart**, ba '71, Topeka, sister-in-law **Marcia (Evearitt) Shuart**, ba '71, Topeka, and brother-in-law **George Vega**, ba '85, Auburn, Kansas.

Michael Wapp, bba '73, 63, Hiawatha, Iowa, worked as an insurance agent at AEGON/Transamerica for more than 30 years. Wapp played football at Washburn.

1980s

Charles Allen, bba '81, 69, Topeka, on Feb. 19. He served in the Navy during the Vietnam War and retired from Southwestern Bell in 1991. Allen was a member of Delta Sigma Psi.

Frank Caro Sr., jd '62, 83, Leawood, Kansas, on Jan. 17. He served in the Navy before working as a county attorney in Colby,

Kansas, and operating a private practice. Survivors include wife **Melanie (Parkerson) Caro**, bsw '81, jd '85, Leawood.

Linda Fitzgerald-Simoneau, b ed '89, 49, Topeka, on May 9. She was an elementary teacher in Valley Falls and the Topeka Seaman school districts. Survivors include brother **Richard Fitzgerald**, ba '89, Topeka.

Carol Foreman, jd '80, 62, Topeka, on April 2. She was a chief administrative judge for the Kansas Department of Social and Rehabilitation Services, legal advisor for the Kansas Insurance Commissioner, director of the Office of Administrative Hearings for the Kansas Department of Administration, and deputy secretary and acting secretary for the Department of Administration. Foreman was a member of Phi Delta Phi and an intern in the law clinic

at Washburn. Survivors include sisters **Nancy (Foreman) Beier**, bsw '71, Topeka, **Ann (Foreman) Dickhoff**, bsw '69, Topeka, and **Janet (Foreman) Leiker**, ba '95, Topeka; brother-in-law **Charles Beier**, ba '71, Topeka; niece **Jessica Leiker**,

b ed '08, Topeka; and nephew **Joseph Leiker**, ba '08, Topeka. **Margaret (Oyler) Holeman**, bsw '82, 93, Grove, Oklahoma, on April 17. She was a member of Zeta Tau Alpha.

Gary T. Williams, ba '89, 59, Topeka, on April 3. He worked at Westar Energy.

1990s

Kari (Milliken) Gilliland, jd '96, 44, St. Francis, Kansas, on March 9. She was an attorney. Gilliland was an associate comments editor for the law journal and a member of the Tax Law Society at the School of Law. Survivors include father **James Milliken**, jd '79, St. Francis. **Julie (Ruckman) Joslin**, bsn '91, 47, Overland Park, Kansas, on March 19. She was a registered nurse.

Donald Manley, m ed '95, 78, Topeka, on Feb. 20. He was a teacher for nearly 40 years, including 34 at Tecumseh South Elementary. Survivors include wife **Nadine (McClelland) Manley**, m ed '75, Topeka, and daughter **Linda Manley**, b ed '89, m ed '96, Topeka.

William Marshall, aas '98, certificate in mental health '98, bas '00, 63, Topeka, on April 24.

He served in the Army and Army Reserves. Marshall worked as a cameraman for WIBW and was a licensed mental health technician for the Topeka Unified School District.

Gary Mitchell, ba '93, 63, Mayetta, Kansas, on Jan. 23. He was treasurer, chairman and vice chairman of the Tribal Council for the Prairie Band Potawatomie Nation and chairman of the Tribal Gaming Commission. Mitchell also authored a book, "Stories of the Potawatomi." Survivors include wife **Voncile Mitchell**, aa '91, Mayetta, sister **Sandra Mitchell-Knoxah**, aas '96, Mayetta, sister-in-law **Mary Wabnum Mitchell**, ba '80, Mayetta, and niece **Hattie Mitchell**, bba '07, Topeka.

Darrell Revell, mba '94, 61, Overbrook, Kansas, on Jan. 31. He worked for Collective Brands and the Kansas Department of Labor. Revell was an adjunct instructor in the School of Business.

2000S

Rose (Reed) Golston, bas '00, certificate in alcohol and drug abuse counseling, 71, Topeka, on March 15. She was a cosmetologist, nurse's aide and administrator at the Topeka Juvenile Detention Center.

Clark Morrow, m cj '04, 51, Olathe, Kansas, on Feb. 1, 2014. He was a police officer for the City of Olathe and a screenwriter.

Kathleen (Irsik) Wayman,

bsw '09, 66, Augusta, Georgia, on Feb. 25. She worked for the police department at Washburn University for 25 years and was a teaching assistant at the Norton Correctional Facility. Survivors include husband **Donald Wayman**, aa '81, bsw '83, msw '97, Augusta, and brother-in-law **Ronald Wayman**, aa '94, Emporia, Kansas.

Nancy Zwiener, ba '00, 64, Auburn, Kansas, on April 13. She worked at Elliots Dairy, Pittsburg Ice Cream Co., First Christian Church Day Care, Nancy Zs Day Care and the State of Kansas. Zwiener also worked in the registrar's office at Washburn.

2010S

Patrick Bridge, bs '12, 31, Topeka, on Feb. 19.

Jeri Fowler, ba '14, 50, Topeka, on March 16. She was a video editor at Advisors Excel.


Bradley Hurla, certificate in manufacturing technology '14, 43, Topeka, on Feb. 19. He worked at Hallmark and Burlington Northern Santa Fe Railway. Hurla played football at Washburn. Survivors include sister **Christine (Hurla) Kottman**, bsn '90, Topeka.

Daniel Kelley, certificate in diesel technology '14, 38, Topeka, on April 8. He worked at Amarr Garage Doors, Goodyear, Del Monte Pet Food and Summit Trucking. Survivors include brother **Erin Kelley**, aas '14, certificate in diesel technology '14, Tonganoxie, Kansas.





CONTROL FEDERAL
R FOR LEA


LIVING LEARNING
CENTER



The Power of a Plan

Establishing an estate plan can help secure your family's future and support your charitable priorities.



“Our estate gift provides Washburn’s Department of Physics and Astronomy seed money for new initiatives and provides stop-gap funding during bad economic times to meet critical needs. The idea came to us in 2006 after Paul rode out the previous recession as chair of the San Diego State University Department of Astronomy.”

Paul Etzel, bs '71
and Rita Etzel, lvn '71 (Washburn Tech, then Kaw Area Vocational Technical School)

As a student at Washburn, Paul Etzel, bs '71, had many conversations with physics and astronomy chair Stanley Alexander, bs '36, and mathematics professor Paul Eberhart, bs '28, about the evolution of college administration since the Great Depression. Those conversations helped him during the 2001 recession and inspired him and his wife, Rita, to set up the Paul and Rita Etzel Physics and Astronomy Fund. Rita recently established four pilot scholarships at Washburn Tech for re-entrant students with a preference toward those with minor-dependent children. The Etzels give yearly to these funds and also have a planned gift to support Washburn for generations to come.

Paul and Rita moved to California after graduation and Paul joined the astronomy faculty at San Diego State University in 1986. He served as chair for five years and director of SDSU's Mount Laguna Observatory for 14 years until his retirement as emeritus professor in 2014. He never forgot the practical lessons his Washburn professors taught him outside the classroom.



For information about gift planning opportunities,
contact Jeannie Shy at the Washburn University Foundation
785.670.2734 | jshy@wufoundation.org | GiveToWashburn.org/giftplanning

ALUMNI TRAVEL OPPORTUNITIES



ICHABODS IN HOLLAND, LUXEMBOURG AND BELGIUM

Ichabod alumni and friends traveled to the Benelux countries in May. Pictured at the Luxembourg American Cemetery and Memorial (left) are Jan Anderson, Carol Armstrong, Chris Armstrong, Paul Bicknell, Gary Doyle, Susie Graber, Vaughn Graber, Linda Hoffmann, Susie Hoffmann, Larry Livingston, Linda Livingston, David Manley, Mary Manley, Ed Matyak, Kathy Matyak, Mary McElroy, Lee Ann Metzenthin, Paul Metzenthin, Barbara Miller, Mike Miller, Carolyn Moser, Howard Paul, Nancy Paul, Marsha Plush, Liz Post, Carolyn Rebek, Paul Rebek, Cindy Rogers, Marilyn Ruggles, Diana Southard, Ira Stamm, Joanna Stamm, Mary Ann Starbuck.



Howard and Nancy Paul were among those who visited the Atomium, which was built for the 1958 Brussels World's Fair. *Photos by Susie Hoffmann*

RIVIERA MAYA, MEXICO JAN. 24-30, 2016

Get away this winter and enjoy time with fellow Ichabods at the Grand Palladium Riviera Resort & Spa. This superior all-inclusive resort has 13 dining options, 25 bars, nine swimming pools and much more. Price is only \$1,585 per person double occupancy and includes non-stop chartered flight from Kansas City to Cancun (other departure cities available, pricing may vary), airport/resort shuttle, junior suite accommodations, all food and beverages at the resort and roundtrip private motor coach transportation from the Washburn campus to the Kansas City airport.

MORE INFORMATION ON OUR TRIPS

For more information about Alumni Association travel opportunities, visit washburn.edu/alumni-travel or contact Susie Hoffmann at 786.670.1641.