

THE WASHBURN

FALL/WINTER
2002-2003

Lawyer

Formerly "The Circuit Rider"

VOLUME 41, NUMBER 1



History of Women at Washburn
Profiles of Women in Leadership
Rising Stars

T able of Contents

THEME: Women at Washburn

Jessie Nye



5

FEATURES:

History of Women at Washburn University School of Law – Professor Charlene Smith.	4-9
Profiles of Women in Leadership	13 - 17
Rising Stars	18 - 20
Donor Honor Roll	27 - 35

DEPARTMENTS:

Letter from the Dean	3
Close-Up	
Matt Memmer (Student)	21
Lillian G. Apodaca (Alumni).	22
Professor Loretta Moore (Faculty).	23
Centers of Excellence	
Business and Transactional Law Center	10
Children and Family Law Center	11
Center for Excellence in Advocacy	12
Class Actions	24 - 26
In Memoriam	36
News & Events	37 - 39
Michael Manning Keynote Speaker	37
Kansas Supreme Court Appointments	37
Bianchino Technology Center Dedication	38
Ahrens Genomic Tort Symposium	38
National Jurist Recognition	39
Partnerships	39
Events Calendar	Back Cover

Matt Memmer



21



Copyright 2003, by the Washburn University School of Law.
All rights reserved.

Washburn Lawyer is published semiannually by The Washburn Law School Alumni Association.
Editorial Office: C/O Washburn University School of Law, Alumni Relations and Development Office, 1700 SW College Avenue, Topeka, KS 66621.

We welcome your responses to this publication. Write to:
Editor: The Washburn Lawyer
Washburn University School of Law
Alumni Relations and Development Office
1700 SW College Avenue
Topeka, KS 66621

Or send E-mail to:
alumni@washburnlaw.edu

Please visit the Washburn University School of Law website at:
<http://www.washburnlaw.edu>

*F*rom the

DEAN

Dean Dennis R. Honabach

Dear Alumni and Friends:

It is my pleasure to welcome you to the first edition of **The Washburn Lawyer**, a new magazine, which replaces **The Circuit Rider**. You will see at a glance that it has a bright new format with engaging stories and many color pictures. As you read it, I hope you will be reminded what a great institution Washburn University School of Law is and feel as much pride in your school as those of us on campus do.

One of the many new features of the magazine is its focus on a theme. This issue examines the rich history of women at the Washburn University School of Law. Most law schools are envious of our history: for almost 100 years women have attended Washburn Law. In addition to detailing some of that history, this issue of **The Washburn Lawyer** features a few of the hundreds of women who have studied here and are engaged in outstanding careers.

You will also find news about our three new signature programs: the Business and Transactional Law Center, the Children and Family Law Center, and the Center for Excellence in Advocacy. These centers have created a stir of excitement among our students, faculty, and alumni, who are collaborating to build a cooperative, active learning environment. I urge you to join us in this effort by volunteering as a mentor with one of the centers. I know you will not regret it.

Dean Dennis R. Honabach



Washburn Law School
Alumni Association
Board of Governors



Bernard A. Bianchino, President '74
D. Duke Dupre, President-Elect '73
Steven G. Cooper, Vice President '73
David E. Pierce, Secretary Treasurer '77
Linda D. Henry Elrod, Exec. Secretary '72
H. Allan Caldwell, Past President '73
D. Duke Dupre, Foundation President '73

Lillian A. Apodaca '85
Hon. J. Patrick Brazil '62
William D. Bunten '56
James L. Bush '75
Nancy Landis Caplinger '85
Stephen W. Cavanaugh '80
Stewart L. Entz '65
David A. Fenley '79
Carol G. Green '81
Leslie Hess '85
Matthew C. Hesse '85
Winton M. Hinkle '68
Paul R. Hoferer '75
Jane Chandler Holt '85
Laura L. Ice '84
John K. Kleinheksel '72
Terry L. Kramer '68
Ward E. Loyd '68
Kent P. Smith '66
David R. Tripp '71
Hon. Gregory L. Waller '73
Roger W. Warren '88
C. Odell Weidner '82
Teri Wilford Wood '78



...the fact that there were
three women in the entering
class of 1903 passed without
comment in local papers.

Professor Charlene Smith



Washburn University School of Law can proudly say it is in the forefront of legal education for women. From the school's inception in 1903, women have been welcome. Compared to other law schools, this is remarkable. For example, Columbia Law School--one of the oldest American law schools at 200 plus years--has admitted women only since 1927.



History of Women at Washburn University School of Law

The explanation for Washburn Law's welcoming of women may be partially related to the culture in which it was founded. That culture is personified by the characteristics of Dorothy in the Wizard of Oz, explained Washburn University History Professor Thomas Averill. Dorothy was courageous, straightforward, loyal, strong, and could show anger when necessary. The women who settled Kansas possessed these qualities, so it is no surprise that Kansas was among the first states to give women the right to vote and to elect women to public office. Further, colleges and universities not located on the east coast tended to be co-ed from their inception.

Given this social climate, there was no reason that women, who had joined men in the arduous task of settling Kansas, should be prevented from pursuing a legal education at publicly supported Washburn University School of Law. Indeed, the fact that there were three women in the entering class of 1903 passed without comment in local papers. While it may not have been seen as noteworthy at the time, in retrospect it was a milestone. In commemoration, this issue of *The Washburn Lawyer* is devoted to vignettes of a cross-section of women who have attended Washburn Law.

COMMON THEMES

Regardless of the fact that women were admitted on an equal basis with men in the first Washburn Law class, the day-to-day reality of their lives sometimes did not reflect the over-all goal of equality. The reality was that although women were free to pursue their dreams of education, they were required to conform to gender roles and adhere to acceptable lines of conduct.

WOMEN ARE WELCOME, BUT...

Writing in the student newspaper, *The Washburn Review* Jessie Junette Nye, class of 1912, observed that "the barrier of entrenched prejudice against the study of law by women is gradually breaking; it is responding to the spirit of the times, which is unquestionably a spirit of greater freedom for women."

(continues on Page 6)



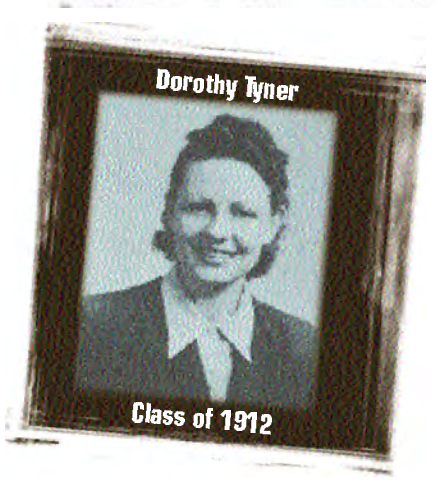
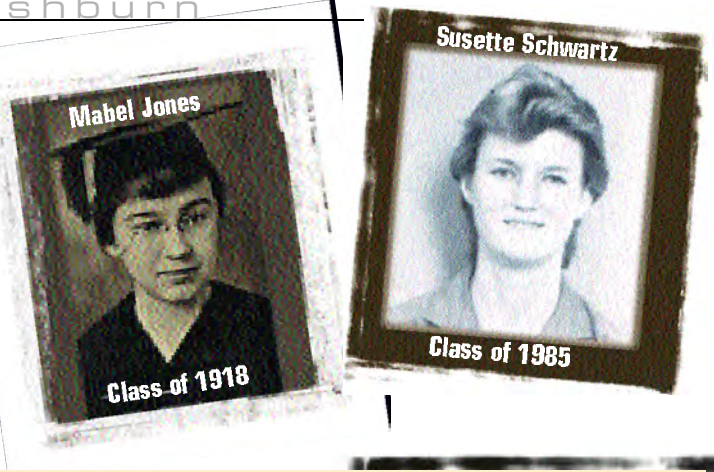
“You may be excused from class attendance tomorrow, because the topic for discussion might be too embarrassing.”

Nevertheless, the Review also suggested that women law students had a particular role to play at the School; they were to "lift the social and moral status of the law student while in school..." This deferential treatment was evident even in the graduation ceremony. Jessie Nye was described as "a strikingly attractive girl" in the Review, and she was "presented with a sheaf of American Beauty roses" by the Dean.

This morally uplifting role combined with the gender expectations of women was carried into the classroom. Justice Alfred Benson, a part-time instructor, told Mabel Jones, class of 1918, "You may be excused from class attendance tomorrow, because the topic for discussion might be too embarrassing." Women were protected from the brutish and obscene, the unclean aspects of society.

At the same time, women endured "practical" advice. Ed Rooney, a local attorney and part-time instructor, told Mabel Jones, "It is very good for the man you marry that you are developing your mind logically. When you are cooking and your biscuits fall, instead of becoming emotional and hysterical, you will pause and think (logically) 'Now what did I do that was wrong?...Oh, yes, I left the baking powder out.'"

History of Women at Washburn University School of Law



TIME LINE

1638 Margaret Brent - first woman attorney in the United States.

1781 Munn Bett, a slave, provides her attorney with the argument that the Massachusetts Constitution which provides, "All men are born free and equal" includes her. She wins.

1839 The first state to pass the Married Woman's Property Act: Mississippi.

1872 Charlotte Ray is the first African-American woman admitted to a bar.

1873 Bradwell v. Illinois – U.S. Supreme Court holds that states may prevent women from practicing law.

1881 Jennie Mitchell Kellogg - first woman attorney in Kansas.

1903 First three women attend Washburn - Maude Bates, Anna Marie Nellis and Ruth Welles.

1906 Jessie Dean (1907-1908) Enrollee at Washburn University School of Law with a LLB.

1909 Jessie Nye enters law school Washburn University School of Law.

1912 Jessie Nye becomes the first woman graduate of Washburn University School of Law.

1920 The Nineteenth Amendment is passed giving women the right to vote.

1922 83 regular law students, (Nine women) "enjoyed the protection and care afforded by the general supervision of the dean of women over student life." "We tried hard to be as little trouble as possible and always on the front row nearest the door." (Washburn Alumnus Law School Edition, p.9)

THE TIMES THEY ARE A 'CHANGIN'

Although women were subjected to reminders of their gender roles, Washburn Law administrators also responded in a positive and supportive fashion to prospective students. Kay Arvin, who was blinded in an auto accident, began accompanying her husband to School because she was bored. "I sat in class and just listened," she recalled. As she listened, she began to think of all the things she would like to learn. Dean Schuyler W. Jackson told her, "If you are coming to class, you might as well make it count for something." She enrolled in Torts and Property, and remarked that she "just loved it." Kay graduated in 1951.

While black men entered the School of Law by the time it was only four years old, it was many years before a black woman graduated. However, this incongruity no longer existed by the 1980s. Many black women came to Washburn for the same reasons Judge Quintress Gilbert, class of 1988, did. She "wanted to be away from distractions," and she had heard of Washburn Law because of *Brown v. Board of Education*. Judge Gilbert had been admitted to four other law schools, including the University of Virginia. She chose Washburn because she believed it offered a chance for practical experience in the Law Clinic and extern programs as well as supportive faculty and peers who would be there to listen to her.

MAKING WAVES

Even though the atmosphere was becoming more supportive, women students were sometimes a proper thorn in the side of the administration. Susette Schwartz, class of 1985, organized the Women Ordering More Bathroom Stalls group. At the time, 180 women were enrolled at Washburn Law. According to Schwartz, "each relief station frequented by males accommodates 21.7 people, whereas each relief station frequented by females accommodates 36 people."

Then Dean Carl Monk responded by immediately ordering new fixtures. And, he went on to observe..."Frankly, I am glad that we have expanded our enrollment here to include many more women

than the building was originally designed for."

THE PRACTICE

Undoubtedly, some early women students chose to study law because they perceived that women, especially married women, had few legal rights. Margaret McGurnaghan, class of 1927, wrote, "The figure of a blindfolded woman holding a pair of scales...was used by man to symbolize Justice, and yet, for ages, woman was not given equal justice...." A married woman, according to McGurnaghan, was deprived by the common law of "nearly every right she had enjoyed as a single woman and left only the legal capacity to sin and to be punished for it."

Thus, many women started law practice with the notion that

the legal status of women needed to be changed and that those who lacked status and money should be represented. So it was that Jessie Nye represented many in the Mexican community. Santa Fe workers were her clients. She did income tax returns for \$7.50 to \$12. She did divorces for nothing if need be. She never made a lot of money. She'd say, "He couldn't afford that...He'll pay me someday." She wasn't concerned with the bottom line.

(continues on Page 8)



Kay Arvin

Class of 1951

TIME LINE

1924 Isabel Obee graduated cum laude from Washburn University School of Law with the highest grade point average in the class of 1924. She practiced in Great Bend, Kansas until her retirement in 1975.

1925 Marie Russell (J.D. '25 cum laude) the first woman to graduate from Washburn with a J.D. and she also doubled as Law Librarian.

(Washburn Alumnus Law School Edition, p. 10) (LLB and JD offered in 1923)

1928 The Topeka Daily State Journal feature article on women practicing law in Topeka. (Washburn alumnus Law School Edition, p.11) "Today women are entering and proving themselves in almost every field in which man has been regarded as supreme. The profession of law is no exception. There are now six young women actively engaged in the practice of law in Topeka, some of them actually representing clients in the courts."

1942 Washburn University School of Law hires its first female professor, Dorothy Davidson Tyner '41.

1942 U.S. v. Ballard – The U.S. Supreme Court decides that women cannot be excluded from federal juries. States could exclude them.

1944 "There were only ten enrolled in law school, and three of those were girls." (Washburn Alumnus Law Student Edition, p.11)

1954 The law school wives banded together to form the Washburn Law Wives Association.

1967 Dorothea G. Warren '42 becomes the first Woman Director of the Washburn Law Library.

1967 Mary Hack becomes first women editor of the Washburn Law Journal.

THE RIGHT PLACE AT THE RIGHT TIME

Many women completing their education at Washburn Law said they got jobs just because they were in the right place at the right time. Bessie Mae McIntosh, class of 1940, observed, "Many of the country's male lawyers were being drafted to serve in the war." Thus, it was not a surprise to her to be hired by the FBI as an attorney, even though J. Edgar Hoover would not hire women agents. The only other women in the office were secretaries, and she was mistaken for a secretary many times.

Like the FBI, Washburn Law found it needed to fill its ranks with women. In 1942, the School hired one of its graduates, Dorothy Davidson Tyner, to teach Property, Federal Taxation, Domestic Relations, and Legal Bibliography. She was the first female professor; now one-third of the faculty are women.

Judge Kay McFarland (class of 1964) echoes much of what McIntosh said about being in the right place at the right time, but she adds, "You have to take chances." In fact, when McFarland was considering applying for law school, an attorney friend of her father told her that she would be confined to a research ghetto. He used Margaret McGurnaghan as an example: "She does only research, and that's the most a woman can aspire to and you wouldn't like that," he said.

McFarland did not take work in the research ghetto, but there was male chauvinism at work. She remembers being sent by one of the partners in her firm to try a case Lyndon, Kansas. "I was so pleased that he had confidence in me," she said. While trying the case, the opposing attorney called her "girlie" and told her that she must have missed a point while she was out getting her hair fixed. She won the case. Later she learned that her partner had sent her to try the case to "prove to the belligerent attorney that the case was so open and shut that even a woman could win it." Today, Judge McFarland is chief justice of the Kansas Supreme Court, the first woman to hold that position.



Thus, many women started law practice with the notion that the legal status of women needed to be changed and that those who lacked status and money should be represented.



TIME LINE

1969 Mary A. Senner '70 was the first woman to be Editor-in-Chief of the Washburn Law Journal.

1971 Kay McFarland '64 - first woman to serve as judge of probate and juvenile court in Shawnee County, Kansas.

1973 Kay McFarland '64- first woman district court judge Shawnee County, Kansas.

1973 Marcia Johnston '74 (formerly Harley) was the first woman to represent the school in the National Moot Court Competition. She was a member of the team that won the regional Jessup competition.

1977 Kay McFarland '64- first woman appointed to Kansas Supreme Court.

1978 Billie Parr is appointed as Assistant Dean at Washburn University School of Law.

1981 Sandra Day O'Conner becomes the first woman appointed to the U.S. Supreme Court.

1987 Christel E. Marquardt '74 becomes the first woman to serve as Kansas Bar Association President.

1987 Christel Marquardt is first woman to serve as President of the Kansas Bar Association.

1995 Kay McFarland '64 is the first woman to serve as Chief Justice of Kansas Supreme Court.

PREPARING FOR TOMORROW

Clearly, Washburn University School of Law has maintained its leadership position in preparing women for careers in the law. Its 1,464 alumnae attest to that. And the future looks equally bright. With 12 women faculty members (39 percent of the faculty) and 204 women students (45 percent of the student body), the women of Washburn Law will be making their marks on the legal profession for years to come.

History of Women at Washburn University School of Law

TIME LINE

1995 Roberta Cooper Ramo becomes the first woman president of the American Bar Association, which was established in 1878

2003 Marla Luckert '80 second woman appointed to Kansas Supreme Court

2003 One third of Washburn Law's faculty are women



Business & Transactional Law Center



Washburn University School of Law has strived, for many years, to prepare students for careers focused on counseling business clients and clients involved in sophisticated transactions. "Still, it was apparent to us, after surveying law schools throughout the region, that this was an area where legal education all too often failed to prepare students for the realities of business and transactional practice," said Professor Steven Ramirez.

To address that need, the Business and Transactional Law Center, directed by Professor Steve Ramirez, was created this fall at Washburn Law. "We are building on our earlier emphasis in this practice area and initiating new programs to produce the best business and transactional lawyers possible," he said. Faculty, students, and alumni are collaborating in the effort.

STUDENT INVOLVEMENT

A new student organization, the Washburn Business Law Society, is energizing and involving students in all aspects of the Center's work. The Society's president, second-year student Greg Parker, and secretary, first-year student Tanya Bidwell, are spearheading student efforts to write the Society's constitution and by-laws. Plans for the Society include selection of a board of alumni advisors, hosting a general counsel institute, creating an annual program on interviewing skills and recent developments in hot areas of business law, and hosting an annual introductory event for incoming law students.

CONTINUING LEGAL EDUCATION

"When we surveyed local business and transactional lawyers, we found that they often had difficulty in fulfilling their CLE requirements in subject appropriate areas," Professor Ramirez said. "We intend to end those difficulties."

To that end, the Business and Transactional Law Center in October sponsored a seminar on the Sarbanes-Oxley Act of 2002. "This act is the most sweeping 'reform' of business and transactional law in the United States since the Great Depression, and it promises to affect the work of virtually every business practitioner. We were able to provide a concise overview of the impact of the act, with a particular focus on new federal rules of professional responsibility which the act mandates for certain attorneys representing publicly held companies," Professor Ramirez said. An outline of the seminar presentation is available at washburnlaw.edu.

"We will be offering more continuing education programs, because this is a way we can serve our students, our alumni, and the surrounding business community," Professor Ramirez said.

Professor Steve Ramirez



ENRICHING THE CURRICULUM

Input from students and alumni is providing direction for transactional law curriculum expansion. Responses to inquiries indicate that these groups are particularly interested in acquiring transactional skills and participating in externships that emphasize transactional law.

The faculty was strengthened with the arrival of Dean Dennis R. Honabach, a noted author in the areas of securities law and director and officer liability.

A TRANSACTIONAL LAW THINK TANK

"Our goal is for the Center to be a think tank for the regional business community," Professor Ramirez said. "We are seeking to wed our already prodigious scholarly output in business and transactional law to the most vexing programs facing the business and transactional legal communities."

High profile business leaders and scholars will visit Washburn Law to engage students and alumni. The first of these visitors will be Dean Mark Sargent of Villanova University School of Law. A nationally known scholar of the securities laws, Dean Sargent will be the Foulston & Siefken Lecturer, February 2003.

ALUMNI INPUT NEEDED

"In the coming months, we will be contacting alumni with interests or expertise in business and transactional law with the hope they will lend us a hand," Professor Ramirez said. "We want to create and leverage a new market niche for Washburn Law; we want the School to be identified as a leader in providing legal education to those interested in business and transactional law."

The strength of this center rests on the strength of Washburn Law Alum. "We will be bringing in alum to mentor students, to speak at luncheons and, perhaps most importantly, to sit down with small groups of students and show them what it really means to be a great transactional lawyer. We need your help," Professor Ramirez said.

Readers wanting to learn more about the Business and Transactional Law Center or to share thoughts about ways to better Washburn Law's programs in those areas are encouraged to contact Professor Ramirez at steven.ramirez@washburn.edu.

Children & Family Law Center

CHILDREN AND FAMILIES IN NEED OF ASSISTANCE

Children and their families face numerous complex challenges. Each year, a significant number of children are involved in administrative hearings and court proceedings in which vital, often irreversible, decisions are made concerning their future well-being. Many children, as well as parents, lack competent, consistent representation because lawyers traditionally have not been trained to screen for domestic violence, to understand family systems, or to know the different kinds of advocacy needed to represent a child, rather than an adult, client.

THE CENTER

The Children and Family Law Center aims to respond to the legal needs of children and their families. Its mission is to provide education, research, advocacy and training focused on children and families involved in the legal system. The new Center will be directed by Professor Linda Elrod, past chair of the both the ABA and KBA Family Law Sections. Professors Nancy Maxwell, Lynette Petty and Sheila Reynolds will also be furthering the mission of the center. In addition, professors in the schools of social work and psychology will add an interdisciplinary perspective in some courses.

The Center's first task has been enhancing the curriculum and educational offerings. In addition to the basic family law course, a family law seminar, a seminar in divorce and negotiation and pleading, domestic violence, and child advocacy courses have been added. The Center will be expanding the clinical opportunities for students and increase internship and externship possibilities so that students can work with practicing professionals in public legal clinics, Kansas Legal Services and public prosecutor's offices. Alternative dispute resolution training gives students additional tools to help families. In addition, students have the opportunity to work on the Family Law Quarterly, the scholarly publication of the American Bar Association which is edited at Washburn Law.

ROLE FOR ALUMNI

Washburn's alumni have been invaluable in Washburn's mission since the beginning.

The Children and Family Law Center will continue the tradition

of using our talented alumni to direct, focus and support the work of the Center. By May 2003, the Center hopes to have an Advisory Council set up composed of alumni and others interested in children and family law issues. The Council will be a resource to the school, offering direction and assistance.

Alumni have always helped with teaching specialty courses or with continuing education programs. The Center will seek to capitalize on the expertise of alumni in particular family law areas. The Center will seek alumni support in participating in programs, mentoring students, talking to students and faculty, and providing ideas. Collaboration with alumni will enable the Center to respond to the needs of the legal community and the judicial system as the Center trains advocates to work within both.

FAMILY LAW STUDENT SOCIETY

The Center will sponsor a student society to provide additional input and student support for activities related to children and families. The Family Law Student Society will help sponsor a speaker's series on family law issues and work with other groups, such as CASA and the National Association of Council for Children.

CONTINUING EDUCATION

The Children and Family Law Center will continue the Family Law Institute, now in its 17th year, focusing on children and family issues. In addition, the Center will soon start a monthly CLE lunch series on specialized topics for lawyers and students alike.

The Center will train child advocates as well as family lawyers who are not only competent practitioners but also are creative and innovative lawyers who can help families find optimal resolutions to their legal problems.



Professor Linda Elrod



If you wish to learn more about the Center, or if you would like to volunteer to mentor students with a focus on the Family Law area of practice, please contact, Professor Linda Elrod, at linda.elrod@washburn.edu.

Center for Excellence in Advocacy

“Fast and exciting.” Those are the words Professor Michael Kaye uses to describe the start of Washburn University School of Law’s new Center for Excellence in Advocacy. The Center, which was launched this fall to promote excellence in skilled ethical advocacy by joining the study of law with the insights, knowledge, and skills of the practicing bar, is directed by Michael Kaye. The Center involves faculty, students, and alumni in a collaborative effort.

At its core, the Center for Excellence in Advocacy serves law students and the profession by beginning the professional training of advocates—whether for the courtroom or the boardroom—from the day students enter Washburn Law. The Center is based on the tradition of Washburn Law students becoming involved in legal work in a variety of agencies, courts, and law offices. “Washburn Law students work as legal professionals well before graduation,” Kaye said. “They hold law clinic internships, externships in public defender offices, in private law offices representing some clients too poor to pay for legal services, in legal aid offices, and as law clerks to district judges.

“Learning to advocate, negotiate, and litigate need not wait until after law school graduation. Professors, practicing lawyers, judges, and students can start the training now,” he added. “The separation between skills training and doctrinal training and between law study and law practice is vanishing. When many law students reflect on their study of law these days, they also reflect on their experiences in the practice of law.”

Washburn has a long history of advocacy training. Many trial lawyers and judges received their legal training here, and they comprise a large, active, and supportive alumni base. Members of this talented group of practitioners teach a variety of elective courses—including advocacy skills courses—in the law school. The curriculum also includes legal drafting courses, simulation courses and strong clinic and externship programs.

Plans for this Center include an advanced evidence course to be offered next summer. Topics will include expert testimony, computerized and e-mail evidence, admissibility of evidence from web sites and other locations in cyberspace, and commercial litigation and white collar crime.

CENTERS
of
Excellence

Professor Michael Kaye



A BUSY SCHEDULE

The Center’s fall schedule has been busy. To date, it has

- hosted two CLE conferences for lawyers, judges, and law students on the effective use of electronic courtroom technology;
- conducted a “full trial” in-house trial competition to select members for two national trial competition teams;
- inaugurated *Courtwatch*, a learning-by-observing court-watching program in the U.S. District Court in Topeka;
- provided opportunities for students to meet Michael Manning ‘77, one of America’s top trial lawyers, who taught a trial advocacy class and a CLE class on using technology in trial;
- offered a program by Dr. Erik Mitchell, Shawnee County medical examiner on what lawyers can learn from autopsies; and
- presented a day-long CLE presentation: “Wielding High Tech Evidence Tools to Win Your Case: A Practical Guide to the Electronic Courtroom” featuring Kristen Thornbrugh ‘96 and Lynn Johnson ‘70.

Also active within the Center is the Washburn Advocacy Society, a school-wide organization. Members meet with outstanding lawyers and judges in a collegial atmosphere to learn the insights and inside knowledge of the successful practicing advocate. The Society also operates a TWEN (The West Education Network) page listing current activities and encouraging discussion and feedback among Society members.

Within the Center, alumni have been active in the selection and coaching of Washburn Law’s national trial competition team. Alumni Steve Maxwell ‘89, Kevin Shepherd ‘00, and Todd Powell ‘98 were judges during a competition to select the team. Team coaches, in addition to Professor Kaye, are Jason Coody ‘01 and Rebecca Farrell ‘01. Tom Beale ‘00 and Patrice Petersen-Klein ‘97 have also volunteered to coach.

Washburn Law also will compete at the Association of Trial Lawyers of America student trial competition next spring. L. J. Leatherman ‘92 of Palmer, Leatherman and White is helping form a student ATLA chapter at Washburn.

Future plans for the Center include a series of dinners for members of the student group with judges, faculty, and practitioners to discuss significant issues in advocacy of interest to the bar and to students. A planned judicial mentoring program and a network with practicing lawyers will introduce law students to lawyers who will allow them to sit in on depositions, negotiations, and court and administrative hearings.

In January, prominent criminal defense lawyer Dan Monnat and his wife Grace X. Wu-Monnat will present a program on Kung Fu strategies and the art of trial advocacy. This popular program uses principles of martial arts to focus on strategies in pre-trial preparation and at trial. Grace X. Wu-Monnat has a bachelor’s degree in martial arts from Shanghai Teacher’s University in China and a master’s degree in sports administration from Wichita State University. She serves as a consultant to Monnat during jury selection and at trial.

“We have many more projects under way and being planned for the Advocacy Center,” Professor Kaye said. “We believe that the Center will be a magnet for energy, creativity, and collaboration between practitioners, students, faculty, and judges, all working to help students develop the art of the advocate.”

If you wish to learn more about the Center, or if you would like to volunteer to mentor students, please contact Director, Professor Michael Kaye, at michael.kaye@washburn.edu.



Many women have attended Washburn University School of Law since Maude Bates, Anna Marie Nellis and Ruth Welles attended in 1903 and Jessie Nye earned her degree in 1912. The editors of *The Washburn Lawyer* have chosen 11 alumnae whose careers reflect Washburn Law's rich tradition of excellence. These women have went on to careers at law firms, in government, and in roles outside of traditional legal practice.

Profiles of Women in Leadership



Linda Elrod, '72

Professor Linda Elrod, Director of the Children and Family Law Center at the Washburn University School of Law, is a leader in the field of family law. Her scholarship and prolific writing enrich the education of not only her own students, but of students in countless other law schools where her casebook on family laws are used. She has also authored a national treatise entitled "Child Custody Practice and Procedure" and a state treatise, "Kansas Family Law" She was president of the American Bar Association's Section on Family Law and is editor of the Association's *Family Law Quarterly*. The quarterly journal has a circulation of 12,000. In addition, Professor Elrod was instrumental in the founding of Washburn Law's international program, which enables Washburn Law students to spend a summer studying at Kings College, London. Courses there have a comparative law focus. ■



Jerry Ann Tribble Foster, '58

As Senior Regional Counsel of the Greater Southwest Region (five state area) of the General Services Administration (GSA) in Fort Worth, Texas, Jerry Ann Foster finds her work "encompasses almost every field of law." She manages a nine-person law office with six attorneys and three staff. "I'm involved in administrative litigation with personal property, federal technology, contract law, personnel law, and assisting the U.S. Attorney General's office in GSA litigation," Ms. Foster said. Of her 14 years with the GSA, she reports, "There has never been a boring day. It is a constantly challenging and rewarding position." ■

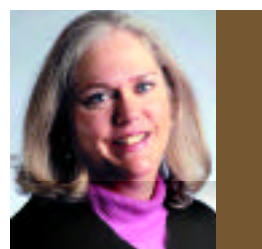


Profiles of Women in Leadership



Quintress J. Gilbert '88

"Children are our future, and they need our protection in a just, safe, and understanding environment." That statement by Quintress Gilbert defines how she carries out her work as juvenile court judge for three Georgia counties. A native of Macon, where she now lives, Judge Gilbert has been an inspiring example for young women since childhood. An honor student while attending Catholic elementary school, she assisted with integration efforts by joining 11 other black students attending a formerly all-white female public high school in the 1960s. Following graduation from Mercer University, she held management positions with Sears Roebuck and Company before coming to Washburn Law in 1986. Her penchant for working with youth led Judge Gilbert to teaching positions as well as to legal positions, including private practice and Assistant United States Attorney with the Department of Justice for the Middle District of Georgia. She is active in numerous community and national organizations including the Macon/Bibb County Communities in Schools and the National Council of Juvenile and Family Court Judges. She was honored by then Governor Jimmy Carter with the Georgia Citation of Merit in recognition of her service to Junior Achievement. ■



Marcia L. Johnston '74

Marcia Johnston's career has been one of innovation and entrepreneurship that has brought her to a partnership in Gowling Lafleur Henderson, one of Canada's largest national law firms. The start of her law career was not auspicious, however. When she completed law school in 1974, Topeka law firms were not hiring women. "In order to be in private practice, I started a practice with classmate Jane Werholtz. We maintained a female—and feminist—practice through 1977," Ms. Johnston said. A gradual gravitation toward areas of business and corporate law,

particularly tax law, led to her becoming senior tax counsel in-house at a major natural gas and pipeline company in Houston. Marriage and a subsequent move to Calgary, Alberta, followed in 1981. In Canada, she switched to corporate and securities law, as well as oil and gas law. In 1985, she "hung out a shingle" as a sole practitioner and started a "boutique securities practice." The firm, which had grown to nine lawyers, merged with Gowlings, a firm with over 700 lawyers, in 2000. "I continue to practice in the corporate and securities law areas, primarily working with public oil and gas companies," Ms. Johnston said. ■



Christel Marquardt '74

When Judge Christel Marquardt graduated from Washburn Law in 1974 there were no women in the private practice of law in Topeka. Thus, her career has been a pioneering one and an inspiration for women who are pursuing a law degree.

From 1974 until 1986, she was with the firm of Cosgrove, Webb & Oman in Topeka. In 1986, she joined the firm of Palmer, Marquardt & Snyder in Topeka and remained there until she joined the firm of Levy & Craig, P.C. in Kansas City, in 1991. In 1994, Judge Marquardt and her son Andrew formed Marquardt & Associates, L.L.C. in Fairway, Kansas where she practiced until her appointment to the court. In 2002, Washburn University School of Law awarded Judge Marquardt the Distinguished Service Award.

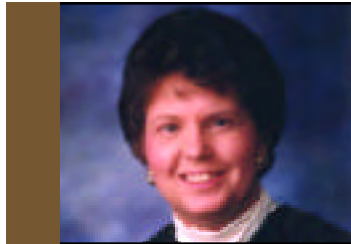
In 2000, the Kansas Bar Association awarded Judge Marquardt the Phil Lewis Medal of Distinction which is the highest award given by the association. She was also designated one of the ten top business women from throughout the United States by the American Business Women's Association in 1985.

Judge Marquardt has been a lecturer on legal issues for the American Bar, Kansas Bar, Kansas Trial Lawyers, Kansas Municipal Attorneys, Kentucky Bar, Louisiana Bar, Washburn University, Missouri Western University, and the Kansas Women Attorneys Association.

Judge Marquardt served as the first woman president of the Kansas Bar Association in 1987-88. She is a past president of the Washburn University School of Law Board of Governors.

Judge Marquardt has also been active in the Kansas and American Bar Associations. She was president of the Kansas Bar Association in 1987-88 and recently completed a three-year term on the American Bar Association's 35-member Board of Governors. She was elected Delegate-at-Large to the ABA's House of Delegates at the Association's 2002 annual meeting. ■

degrees in business administration and several years experience in banking before she enrolled at Washburn Law. Ms. Lance said her law degree has made her career possible. Law school provided an additional layer of education that was essential to performing the work I do now," she said. ■



Marla Luckert '80

Kansas Governor Bill Graves recognized the accomplishments of Judge Marla Luckert in November 2002 with an appointment to the Kansas Supreme Court. At the time, Justice Luckert was serving as chief judge of the Third Judicial District, a one-county district consisting of Shawnee County, Kansas. A district judge since April 1992, she had been chief judge since 2000. She is a graduate of the National Judicial College judges' general jurisdiction course. Justice Luckert had previously been a partner in the Goodell, Stratton, Edmonds & Palmer firm in Topeka. She has taught courses on health law and bioethics at Washburn University School of Law. ■



Donna L. Lance '95

As a commercial transactions attorney with Koch Industries, Inc., Donna Lance is involved in types of transactions that she did not even know existed at the time she entered Washburn Law. Koch is a Wichita, Kansas, based oil and gas company. Her work generally involves commodity and commodity derivative transactions, securities transactions and other commercial transactions. Although she had bachelor's and master's





Profiles of Women in Leadership



Kay McFarland '64

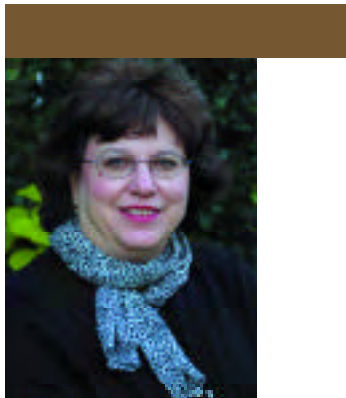
Justice Kay McFarland is Chief Justice of the Kansas Supreme Court, a position she has held since September 1, 1995. She is the first woman to serve in that capacity. In fact, her career has been a remarkable series of "firsts." Following law school, she was in private practice in Topeka until 1971, when she challenged the incumbent judge of the Shawnee County probate and juvenile courts and won the election. She was the first woman elected to a judgeship in Shawnee County. She delivered the court reforms pledged in her campaign and reduced serious juvenile offenses by more than half in the two years she held the office. In 1973, she became judge of the newly created Fifth Division of the District Court in Topeka, thereby becoming the first woman to be a district judge in the history of Kansas. She was appointed by the governor to be a justice of the Kansas Supreme Court in 1977. ■



Joyce S. Rubenstein '76

To say that Joyce S. Rubenstein is in tune with space age technology would be right on the mark, for she works at the heart of the U.S. space program, the Lyndon B. Johnson Space Center, National Aeronautics and Space Administration (NASA) in Texas. She is Assistant Chief Counsel for Procurement Matters at the Space Center. In that position, Ms. Rubenstein provides advice to NASA procurement and technical organizations in the awarding and administration of government contracts. "I'm involved in conducting competitions, drafting specific terms and conditions (including

working with international partners), defending protests and contract disputes at administrative venues such as the General Accounting Office and the Armed Services Board of Contract Appeals, providing export control advice, and negotiating settlements," she said. "Some of this work relates to the Space Flight Operations Contract (shuttle) and the international space station contract." ■



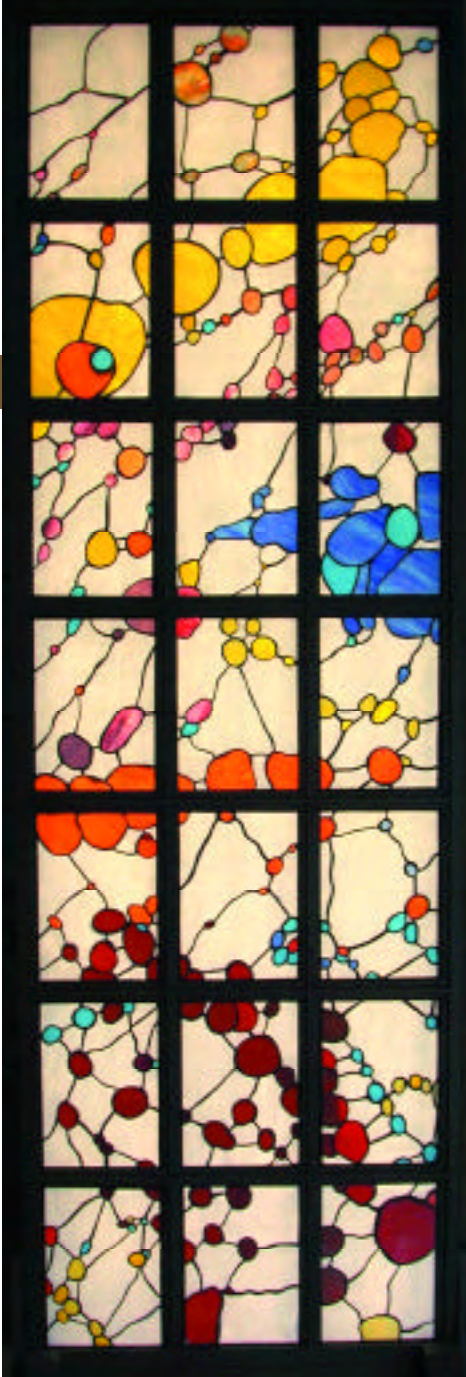
Sue Jean White '80

As general counsel of Shell Chemical, a division of Shell Oil Company, Houston, Texas, Sue Jean White has to have both legal and business expertise. During her 20 years at the company, Ms. White has been involved in legal work related to exploration and production, chemicals, and corporate matters. "I now oversee all legal work for the \$5 billion base chemical company and am responsible for legal work associated with Shell's Wind business," Ms. White said. A staff of 10 attorneys, two legal assistants, and three administrative assistants report directly to Ms. White, and an additional 25 other attorneys within Shell Legal Services-US handle chemical legal work for which she is responsible to the client. A member of the Shell Oil Company Legal Leadership Team, Ms. White sponsors all staff development for Shell Legal Services-US, which has 234 attorneys, legal assistants, and administrative personnel. ■



Teri Wilford Wood '78

Teri Wood's career has followed a course through private practice, government service, and the corporate law she now practices as Associate General Counsel for IBM Corporation, Armonk, New York. She began her career as a litigation associate at Stroock & Stroock & Lavan, New York. A period as an administrative judge at the U.S. Equal Employment Opportunity Commission allowed her to develop expertise in discrimination law. Recognizing her expertise, American Express Company recruited Ms. Wood for its General Counsel's Office, where she rose to the position of Managing Counsel. She has been at IBM since 1996. "I head up the legal function within the Corporate Law Department that provides legal services in the areas of employee benefits, executive compensation, human resources, and labor and diversity," Ms. Wood said. ■



Women from Washburn are Making an Impact

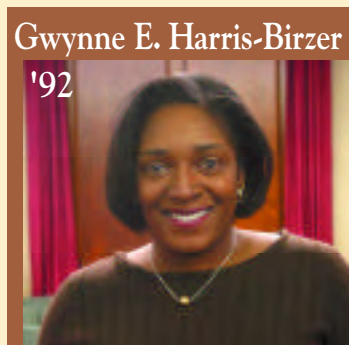
In past decades, Washburn University School of Law has drawn talented women from around the world to follow in the footsteps of earlier alumnae. This section focuses on the success of eleven of Washburn Law's rising stars. These women are having early career successes that the pioneer alumnae could have only dreamed of decades ago. The rising stars are up-and-coming women who are or have been tribal attorney's, in high level attorney positions within the Federal Government, and high level executives in giant industries such as insurance and pharmaceuticals. These are alumnae whose careers bear watching as they quickly maneuver through the public and private world to conquer the challenges that lie ahead and to encourage others to do the same.



Katherine Corry Eastman '00

People literally put their lives in Katherine Eastman's hands. She is Deputy State Public Defender for the State of Colorado. "I carry a caseload of 80 to 100 cases at a time," Ms. Eastman said. "It is my responsibility to see that indigent people accused of crimes are treated fairly in court. I try cases and continually negotiate with the prosecution for plea bargains." Eastman just recently was second chair on a first degree murder trial for the very first time and is now serving as first chair attorney on another first degree murder trial. Her career is just what she hoped it would be. "Before going to Washburn Law, I clerked for a juvenile judge in Colorado Springs, and I saw public defenders in court every day. Later, as a law student, I interned with the Kansas Public Defender's Appellate Office and

helped with two death penalty cases that were on appeal at that time. In addition, I was a staff writer for the Law Journal and had two pieces selected for publication. Those experiences solidified my goal of being a public defender. "I can't imagine doing any other job," she said. Eastman also serves as a mentor for the Department of Human Services Project Redirect Program which targets at-risk kids and their families by providing intensive intervention through mentors to provide the children with a positive direction in life.



Gwynne E. Harris-Birzer '92

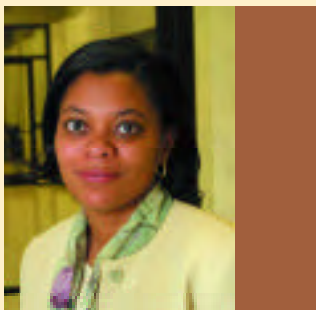
Gwynne Harris-Birzer is an ambitious woman. As a child, she didn't hear much about going to college. It wasn't expected in her family. Undeterred, she worked, attended

college part time, and earned her law degree at Washburn University School of Law while serving as guardian for a young niece.

Her career has been equally impressive, for she champions the causes of women and children wherever she is. As Assistant District Attorney for Shawnee County, Kansas, she prosecuted all rape, incest, sexual battery, and physical abuse of children cases. She provided sexual crime victim consultations and prosecuted cases under the sexual predator law. She made numerous presentations informing the public of functions within the district attorney's office regarding sexual offenses.

Her ultimate goal, however, is to be a judge--a career that requires a broad range of experience. Another bold step--establishing a general practice law firm in Topeka--was required. Five years later, Ms. Birzer handles criminal, civil, domestic, probate, business, adoption, and Guardian Ad Litem for child in need of care cases. Her work has been

recognized by the Kansas Department of Commerce and Housing which honored her with its Women and Minority Owned Business Award for "Most Professional Service." "I'm glad I had the guts to step out and make a go of it," Ms. Birzer said. She is proving that guts and perseverance pay off.



Yolanda Ingram '95

As Assistant Dean for Student Affairs & Director of the Tennessee Institute for Pre-law Studies at the University of Memphis Cecil C. Humphreys School of Law, Yolanda Ingram is giving back some of the knowledge she has obtained over the course of her career. That career has been one of diversity and accomplishment: Attorney with a leading Kansas City, Missouri, law firm: Polsinelli, White, Vardeman, & Shalton; professor at Temple University, Philadelphia; judicial clerk with Judge Jay Daugherty in Kansas City, Missouri; and account representative for Westlaw, a major legal publishing company. The skills developed in those positions enable her to work well with students. She plans and directs the Tennessee Institute for Pre-law's eight-week summer program, counsels law students, serves as liaison to student organizations, and recruits minority students. Ms. Ingram

describes her job as a good fit. "I am a very outgoing person, so spending long hours in the library researching was not suitable for my personality. My work gives me the interactions that I thrive on. It seems that everything that has come before in my life was grooming me for this position," she said.

Jennifer Koepke '00



Two years after graduation, Jennifer Koepke has found that her Washburn Law degree opens doors for her as she pursues a career in Washington, DC. She is legal counsel for the National Voter Fund of the Department of Justice. "When my husband and I moved to the DC area, I wanted to get into politics," Ms. Koepke said. "With persistence, I got my wish and found my first position as staff counsel for the Democratic National Committee's Voting Rights Institute. Since then I've moved on to the Department of Justice. My time at Washburn Law taught me to look at things from all perspectives and to be broad-minded. That attitude is important in the work I am doing."

Heather Lorenz '01

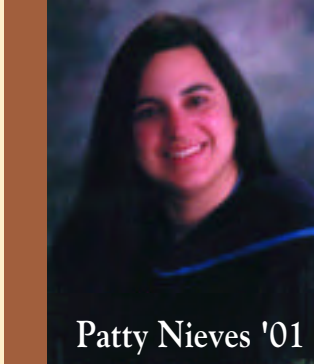


Although she has been out of law school less than two years, Heather Lorenz is well on her way in her legal career. Immediately following graduation, she joined Shook, Hardy & Bacon as an associate in the firm's National Products Liability Litigation Group in Miami, Florida. In addition, Ms. Lorenz is contributing to the legal profession through involvement with the American Civil Liberties Union and its Legal Panel in Miami. "This work is important to me, because I passionately believe in individual rights and freedoms, such as freedom of speech and religion. I also believe that everyone has the right to counsel even if they are financially unable to pay, so I'm involved in pro bono work," Ms. Lorenz said. "As I look back, I realize how very fortunate I am to have attended Washburn Law. The dedicated faculty made sure that when I walked out into the legal profession I was prepared to tackle any legal challenge," Ms. Lorenz said.



Jenifer Lucas '75

"If someone had told me when I graduated from high school in Independence, Kansas, that I would ultimately be a lawyer in Washington, DC, working on cases of national significance, I would have thought that person was crazy," said Jenifer Lucas. But that is just what she is doing. Ms. Lucas is an attorney-adviser at the Federal Energy Regulatory Commission, which regulates the interstate transportation of electricity, natural gas, and oil. Her work is primarily in the area of oil and gas pipelines and the drafting of orders for the Commission's consideration. "It is a huge privilege to work on things that directly affect the lives of others, and that trust should never be taken lightly," she said. "I would encourage law students and young lawyers to believe that what they do really does make a difference, no matter how small or large the case or issue may be."



Patty Nieves '01

Patty Nieves is passionate about Indian Law. She is ICWA attorney/Tribal Council at the Tribal Justice Center of the Association of Village Council Presidents (AVCP) in Bethel, Alaska. She came to that post following a law clerkship at the Superior Court in Bethel, Alaska. Her work is providing direct assistance to Indian families and leading to improvements in the tribal courts system. "I love what I'm doing," Ms. Nieves said. "I represent the 56 villages in the Y-K Delta of Alaska in state court matters involving the removal of native children from their homes and assist the tribes in getting children's cases transferred from state court to tribal court." In addition, she is helping the tribes establish and operate their own courts, training tribal court personnel, and assisting in the drafting of tribal policies, ordinances, and laws.



Patrice Petersen Klein '97

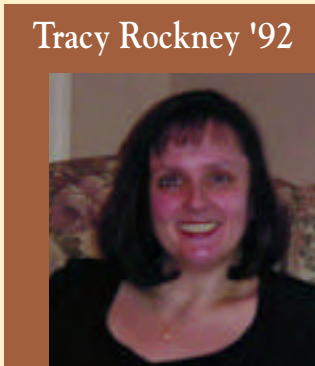
As Research Attorney to Chief Justice Kay McFarland of the Kansas Supreme Court, Patti Petersen-Klein feels she has found her niche in the legal profession. "I research and write about issues that are presented by parties whose cases are on appeal to the Kansas Supreme Court," she said. "I also have duties which involve assisting Justice McFarland in her role as the top judicial officer in Kansas." Ms. Petersen-Klein came to the law following a successful career as a "commercial banker for large money-center organizations. I was always drawn to positions where business was indistinguishably intertwined with law, so when it was time to transition from the banking business, I knew law was where I wanted to be," she said.

Photo not available at time of printing.



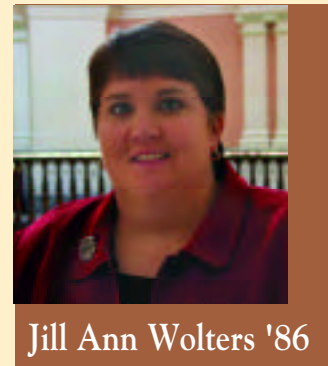
Lori Rinaldi '97

Lori Rinaldi managed to simultaneously earn two degrees--a JD and an MBA--while attending Washburn Law. Now she is putting the organizational skills she used for that balancing act to work in her dual career as a full-time trial lawyer and a full-time wife and mom. Ms. Rinaldi is house counsel for Progressive Insurance Company. She practices automobile defense litigation, representing Progressive's insureds who are being sued following an accident. She also represents Progressive in coverage suits. Her strengths as a trial lawyer were developed in Moot Court while at Washburn Law, in her first job as judicial clerk for a trial court, and in positions at two trial law firms practicing employment law, defense litigation, premise liability, commercial law, and construction law. "Participating in Moot Court gave me the self-confidence that has allowed me to believe I can do anything I want to, and so far I have," Ms. Rinaldi said.



Tracy Rockney '92

Tracy Rockney's work has an impact on the health care available to thousands of people. She is Director of Worldwide Regulatory Affairs for Wyeth Pharmaceuticals in St. Davids, Pennsylvania. In that capacity, she is involved in the distribution of pharmaceuticals for the treatment of major illnesses including cancer. "Although I don't practice law, it would be very difficult to do the job that I do without a legal background," Ms. Rockney said. "I manage a group of regulatory professionals that is responsible for the post-approval regulatory activities for Wyeth's oncology, neuroscience, and musculo-skeletal products. Our role is to work with the marketing department on developing appropriate and compliant advertising and promotional campaigns, to develop appropriate labeling for all Wyeth products, and to seek and facilitate approval of new indications for our products with the Food and Drug Administration."



Jill Ann Wolters '86

Jill Ann Wolters' work as Assistant Revisor of Statutes for the State of Kansas has the potential to affect key state policies. "I work closely with the legislators, providing research, offering legal advice, and recommending legislation to update or clarify existing laws," Ms. Wolters said. Her assignments include the State Legislature's Joint Committee on Corrections and Juvenile Justice Oversight, the House Judiciary Committee, and the House Education Committee. "I draft legislation, committee reports, and floor amendments and provide assistance in legislative procedural matters," Ms. Wolters said. Her interest in legislative work was piqued in 1983, when she had a Washburn Law internship with Mike Hayden, then speaker of the Kansas House of Representatives. A law clerkship in the Revisor of Statutes Office followed in 1986, and she joined the Office staff later that year. "My solid education in Kansas law and the strong legal research skills I developed at Washburn Law are invaluable in my work," Ms. Wolters said.



With a flourish, President George W. Bush

signed a proclamation marking the 12th anniversary of the American Disabilities Act. "Today I'm proud to announce a change in the Medicare homebound rule. It has been changed to apply to people who can leave their homes for short periods of time," the President said.

Matt Memmer, a third-year student in Washburn University School of Law, can take some of the credit for that change which ensures that nearly 600 disabled people will not lose their Medicare benefits because they leave their homes too many times during the month. Memmer's contribution to the effort came about because of his work as an intern at the National Council for Independent Living in Washington, DC.

While attending a meeting where White House Disability Liaison Troy Justesen was present, Memmer became involved in a discussion of the homebound rule. He cited a *Washington Post* article by former Kansas Senator Bob Dole '52 about the need to change the rule. Based on his involvement with ADA activities and organizations including the Topeka Independent Living Resource Center where he works for Kirk Lowry '87, Memmer backed up Dole's article.

He reported on the disabled community's wish for a change in the rule and noted it would be beneficial for the White House to support the change.

LOSE UP



Student

Matt Memmer at the White House

Following the meeting, Memmer was asked to do legislative research on the subject. He carried out the work, wrote a report, and presented his findings to Justesen. A second meeting with Justesen and White House staff ensued. During the White House meeting, questions about the homebound rule arose. Memmer responded with a two-minute speech based on his research about the rule and why it should be changed. "That was it; the meeting was over," Memmer said. "I had my two minutes of unexpected fame."

A few weeks later, Memmer received a phone call from Justesen informing him that there might be some movement on the homebound rule and inviting him to the White



Matt Memmer '03

House ADA proclamation ceremony. "I was in awe of the dignitaries in attendance and those I met and spoke with," Memmer recalled. In addition to former Senator Dole, they included John Wodatch, head of ADA enforcement for the Department of Justice; John Kemp '74, a disabilities advocate; Senator Tom Harkin of Iowa; Attorney General John Ashcroft; Secretary of Labor Elaine Chao; and Secretary of



John Kemp '74, Matt Memmer '03 & former Senator Robert Dole '52

Transportation Norman Mineta.

Following the signing ceremony, Justesen introduced Memmer to President Bush as someone who had done extensive work and research on the homebound rule. For once, Memmer was speechless. "I stayed up all night

thinking of what I would say to the most powerful person in the country and the points I would make regarding disability rights, and when the time came, I couldn't say anything at all," he said.

Reviewing his work in the nation's capital, Memmer believes his dispute resolution and negotiation courses at Washburn Law helped him tremendously in his internship. "Anything having to do with legal research and looking up cases and doing things for Professor (Peter) Cotorceanu was most helpful," he said. "Having a person with a legal background, who can research items and issues and bring in the law and hard facts just totally bolsters what we can do in the House, the Senate, and the Executive Branch," he added.

His Washington experience has helped Memmer find his niche in the area of disabilities. "I felt before my internship that everything was abstract and now I feel I have a baton in my hand and a number of laps to race. When the subject of Medicare and Medicaid comes up, my ears perk up," he said.

Lillian G. Apodaca '85

Alumni



Ms. Apodaca, whose ancestors settled in New Mexico in 1598, was born and raised in a small northern New Mexico ranching village. At age 13, she started attending an all girls Catholic boarding school in Arizona and also attended Phillips Exeter Academy in the summer.

Although she is a partner and shareholder in one of New Mexico's most prestigious law firms—Bingham, Hurst, Apodaca, Wile & Schoen in Albuquerque—Lillian Apodaca says one of the most important attributes she brings to her practice is “being very down to earth.” “I represent contractors and subcontractors. Most are small businesses. You have to understand their concerns and problems,” she said.

A 1985 graduate of Washburn University School of Law, Ms. Apodaca practices in the areas of business and commercial litigation and transactions with an emphasis in construction law. She is a certified American Arbitration Association construction arbitrator and a frequent seminar lecturer in construction law and alternative dispute resolution.

When it was time to choose a law school, Ms. Apodaca settled on Washburn University or the University of Kansas. “My preference was Washburn,” she recalled. “The Washburn application was due one week before K.U.'s, so I completed the Washburn application first and hand delivered it to the admissions office. Within three days, I was accepted. I saw no reason to apply to K.U. and never completed their application.”

The choice of Washburn proved to be a good one. “The overall environment at Washburn is extremely supportive,” Ms. Apodaca said. “I think the faculty works very hard to create this environment and it is what makes Washburn so very special.” In addition to faculty support she received, Ms. Apodaca appreciated the camaraderie among students. “I made many wonderful friendships while I was there,” she said.

Following graduation from law school, Ms. Apodaca practiced in Kansas for two years before returning to New Mexico, where she passed the bar exam and joined her present law firm in 1987.

During her career, Ms. Apodaca has made her mark in several areas. *Hispanic Business* magazine recognized her as one of 100 most influential Hispanics in the nation, and *New Mexico Business Weekly Magazine* named her as one of New Mexico's Power Brokers. She was co-chair of New Mexico Governor-elect Bill Richardson's Transition Team.

Ms. Apodaca has served as a director of the National Hispanic Leadership Agenda, a coalition of major national Hispanic organizations including the Congressional Hispanic Caucus. She has been a member of the Host Committee of the Hispanic Heritage Awards and is president of the board of trustees of the National Hispanic Cultural Foundation.

She is a past president of the New Mexico Hispanic Bar Association and of the Hispanic National Bar Association, an organization representing the interests of 25,000 Hispanic lawyers, law students, judges, and law professors in the United States. Ms. Apodaca has been a member of the board of directors of the Mexican American Legal Defense and Education Fund (MALDEF), serving as vice president. In addition she chaired the board of directors of the New

Mexico State Bar International Law Section. She currently sits on the American Bar Association's House of Delegates and is an Ambassador for the American Bar Association's Business Law Section.

“One of my most passionate causes is pursuing diversity,” Ms. Apodaca said. “I am speaking of diversity in every sense. Diversity of thought, diversity of ideas, ethnic diversity, and so on. It is a concept that we are losing. I think we are simply too overwhelmed or too afraid to have any kind of meaningful dialogue or discussion. Without discussion, I do not believe the best decisions are made.”

Despite her busy schedule, Ms. Apodaca finds time to help Washburn University School of Law. She is a member of the School's Alumni Board of Governors, and provides financial support for its programs. “Washburn has produced more than its share of outstanding graduates,” Ms. Apodaca said. “When you see this sort of success, you have to conclude that the School is doing something right. In order to continue the successes for future generations, our own children, all of us should support Washburn.”

“Washburn has produced more than its share of outstanding graduates...”

Professor Loretta Moore likes to help people, particularly the underdog and those who are oppressed and exploited because of their naiveté or their position in life. She has taught the importance of that work to students in the Washburn Law Clinic, which serves clients who could not otherwise afford legal counsel.

A member of the Washburn University School of Law faculty since 1991, Professor Moore has had several careers. Her first was in medical record library science. During that time, she worked closely with legal counsel and gave professional testimony in court. Those responsibilities influenced her decision to pursue a law degree. She received her J.D. from Washington University School of Law in St. Louis in 1978.

Armed with her new degree, Professor Moore was a civil litigation associate with Lashley & Baer in St. Louis and later co-founded her own firm, Vickers, Moore and Wiest. She also served as municipal court judge in Pinelawn, Missouri.

At Washburn Law, Professor Moore encourages students to follow her lead and explore what possibilities may await them once they are out of law school. "I remember the advice an associate gave me years ago," she said. "He explained how diverse a law degree can be and encouraged me to explore all the possibilities of how I could use my education, in addition to litigation."

Professor Moore specializes in Alternative Dispute Resolution (ADR) and teaches a class on the topic. Her interest in finding alternatives to litigation was spawned during her time as a litigator. "There were times when litigation seemed futile," she said. She was introduced to ADR during a continuing legal education seminar and felt it offered a "suitable set of alternatives to some litigation."

Her other teaching responsibilities include courses on Sports Law and Advocacy Skills in Negotiation and Mediation. As committee chair she provides students with externships.

"Practical experience is crucial. I'm working to expand externships, looking for field placements at firms where students can gain experience and knowledge, particularly in business and family law," Professor Moore said. "Our Law Clinic and externships offer excellent opportunities for students to get real world experience."

Professor Moore is passionate about the value of a law degree. "Our role as lawyers is to bring about change where change needs to be made and to preserve what is guaranteed by the U.S. Constitution," she said.

Coming to Washburn Law has proved to be a wise decision for her. "The faculty here is sincere, dedicated, open, and very helpful. Washburn is a great learning environment. There is a small community feeling. Students are recognized by professors and don't become just numbers," she said.

In Professor Moore's view, the learning isn't a one-way street, however. "I've probably learned as much from my students as

they have from me. Hearing from past students and learning how they are succeeding is very fulfilling. It's good to think that I and other faculty members are making an impact on students' lives."

Reflecting on her life, Professor Moore said she has enjoyed her career and the roads she traveled to get to where she is today. "I believe that every experience and every person you encounter is for a reason and make you what you are today," she said.

Nevertheless, she encourages her students not to take themselves too seriously. "If you do, you'll miss out on many possibilities! If you become too serious you miss seeing the small things and may miss extraordinary opportunities," she said.

And finally she offers this

"Our Law Clinic and externships offer excellent opportunities for students to get real world experience."

bit of advice: "Attitude is everything; it is what shapes your well-being. The only thing you can ultimately control is your attitude. You cannot control other people's actions or words towards you, but you can control how you react to those encounters. And that's what counts."

Professor Loretta Moore

Faculty



Class Actions



Alumni enjoy reception at Jerry & Shannon Michaud's residence

1960s

Ray "Sandy" Sutton '66, Kansas City, MO., Vice President, Corporate Secretary and General Counsel of Interstate Bakeries Corporation, retired from IBC on June 2, 2002. Mr. Sutton's career with IBC has spanned more than three decades. Sutton joined Interstate Brands Corporation, a New York Stock Exchange company, as Assistant Legal Director in 1971 and became its Legal Director in 1976. He became Vice President and General Counsel the following year. In 1985, the IBC Board of Directors elected him to the additional post of Corporate Secretary. Prior to joining IBC, Mr. Sutton served with a number of Kansas City-based law firms, including Ross, Wells, & Barnett; Brenner, Lockwood & O'Neal and the J.F. Pritchard Company, an engineering, design and construction firm. He retired as a Colonel in the U.S. Army Reserve.

Larry A. Withers '68, Wichita, KS, has formed a new law firm named Withers, Gough, Pike and Peterson LLC. The firm opened September 3rd, in Wichita.

1970s

Richard L. Hathaway '73, Topeka, KS, was honored in Washington, D.C., by the U.S. Justice Department. He received the 2002 Director Award from the Justice Department's Executive Office for U.S. Attorneys. Hathaway has spent 20 years as a federal prosecutor and will be honored for his work prosecuting complex fraud cases involving hospitals, savings and loan failures, oil executives and insurance executives. He was honored during a ceremony at the Ronald Reagan Building in the International Trade Center in Washington, D.C.



Nichols

William T. Nichols '73, Topeka, KS, has been promoted to Executive Vice President at Commerce Bank and Trust. Nichols also is chief credit officer. He is responsible for the bank's credit portfolio, including the establishment of new products, retention programs and supervision of all credit/lending functions within the bank. He is a director of St. Francis Health Center and is involved with the Topeka Bar Association and the Topeka Community Development Corp.



Buddenbohm

Leonard L. Buddenbohm '76, Atchison, KS, is serving as the Past President of the Kansas County Counselors Association this year, having completed his term as President in 2001. He continues to maintain his private practice in Atchison and Overland Park, Kansas.

Linda P. Jeffrey '77, Topeka, KS, received the Community Service Award from the National Society of the Daughters of the American Revolution.

Kurt J. Shernuk '78, Kansas City, KS, was honored in Washington, D.C., by the U.S. Justice Department. He received the 2002 Director Award from the Justice Department's Executive Office for U.S. Attorneys. Shernuk, was honored for helping design and implement an automated system to notify federal crime victims of the status of their cases. He was honored during a ceremony at the Ronald Reagan Building in the International Trade Center in Washington, D.C.

Mike R. Biggs '79, Wichita, KS, has formed a new law firm named Kellogg, Biggs, Wilkerson LLC. The firm opened September 3rd and will focus on business and health care law.

1980s

Col. Keith L. Roberts '80, Woodbridge, VA, recently retired from the Air force after nearly 21 years. He most recently served as an Appellate Judge on the Air Force Court of Criminal Appeals. Previous assignments included tours as a Circuit Trial Judge and policy-level assignments in Washington, D.C., and assignments in Georgia, Germany, Alabama, Wichita, Kansas and Guantanamo Bay, Cuba. He recently accepted a position as Associate General Counsel, The White House, Office of Administration.

Stephen C. Fiegiger '83, Brunsville, MN, was elected chair of the City/Chamber Economic Growth Committee after being re-appointed by the City Council. He has a civil litigation practice, handling primarily employment law, personal injury and commercial cases.

Laura L. Ice '84, Wichita, KS, has received an Outstanding Service Award from the Kansas Bar Association and has been elected its Secretary/Treasurer for the 2002-03 term.



First year students Brett Shirk and Angie Hungerford enjoyed meeting alums at the 2002 reunion





Dean Dennis Honabach and Jerry '51 & Shannon Michaud

1980s (continued)

David B. Sutton '84, Wichita, KS, has joined the private wealth management division as legal counsel for Intrust Bank in Wichita.

James J. Abbs '85, Wawaka, IN., has been named Chief Public Defender in Noble County Indiana.

Daniel D. Creitz '85, Erie, KS, was appointed by Gov. Bill Graves as the new District Court Judge for the first Judicial District, which includes Allen, Neosho, Wilson and Woodson Counties.



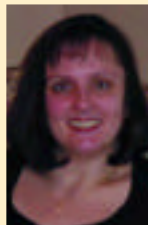
Herr

Paul C. Herr '87, Wichita, KS, has joined the law firm of Klenda, Mitchell, Austerman & Zuercher.

Shelley A. Ryan '87, Winthrop, MA, is a staff attorney for the United States Court of Appeals, First Circuit, in Boston.

1990s

James Scott MacBeth '92, Wichita, KS, has been named a member of Hinkle, Elkouri Law Firm L.L.C. Mr. MacBeth devotes a significant portion of his practice to taxation, tax litigation, business planning, employee benefits, and municipal finance.



Rockney

Tracy D. Rockney '92, Radnor, PA, recently left Pfizer, Inc. after nine years in Regulatory Affairs and has joined Wyeth Pharmaceuticals. Tracy is the Director, Worldwide Regulatory Affairs, Global Brand Management, managing US FDA regulatory issues for Wyeth's Neuroscience, Oncology and Musculoskeletal product lines.

Carlene J. Griffith '93, Indianapolis, IN, is an attorney with the Simon Property Group. She specializes in retail leasing.

Yolanda D. Wesley Ingram '95, Memphis, TN, has been appointed assistant dean for student affairs and director of the Tennessee Pre-Law Fellowship Program at The University of Memphis' Cecil C. Humphreys' School of Law.



Ingram

Joseph S. Passanise '97, Springfield, MO, received the Lon O. Hocker Award for 2002. The Missouri Bar Foundation makes the award annually to young trial lawyers who have demonstrated unusual proficiency in the art of trial advocacy.

Stephen '98 and **Jacqueline Fisk Glazer** '98, Flagstaff, AZ, have acquired the Law Office of Stephen M. Stern, PC., and have renamed the practice The Glazer Law Office, PLLC. Stephen Stern '98, who is "of counsel" to The Glazer Law Office, PLLC., has relocated to Shell Beach, California, where he also serves as general counsel for PEAK Learning, Inc.

Ami S. Hyten '98, Topeka, KS, is a staff attorney with the Office of Judicial Administration, Kansas Supreme Court. She also serves as Kansas Trial Lawyers Association Vice President for Public Affairs.

Robin K. Reed '98, Kansas City, MO, was appointed to the Missouri Governor's Commission on Personal Independence.



Alumni Event in Kansas City, MO

Stephen M. Stern '98, Flagstaff, AZ, has been named to the general board for The Raymond Foundation and was named Secretary for the Coconino County Bar Association.

William A. Alford '99, Alexandria, VA, recently completed a one year tour with the U.S. Army Trial Defense Service at the Second Infantry Division, Camp Casey Field Office, Republic of Korea. His new duty position is the Chief of the Criminal Law Division at Ft. Belvoir, Virginia.

Danny J. Baumgartner '99, Topeka, KS, is an attorney in the litigation department of the Kansas Department of Social and Rehabilitation Services.

Class Actions



Advocacy Center Alumni Event, Topeka

1990s (continued)

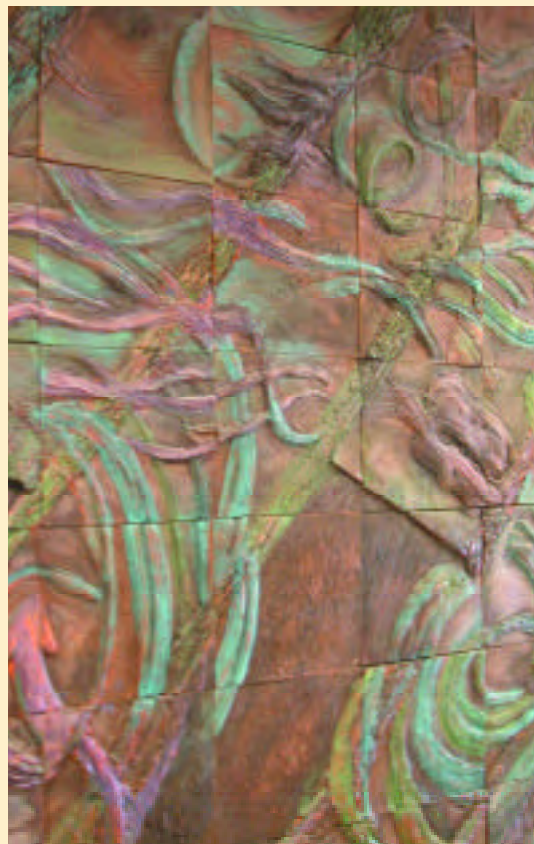
Michelle L. Brenwald-Johnson '99, Wichita, KS, has joined the law firm of Klenda, Mitchell, Austerman & Zuercher, LLC.



Hawkins

Dennis P. Hawkins '99, Monmouth, IL, has assumed the position of Vice President of Finance/Chief Financial Officer/Corporate Compliance Officer at Community Medical Center of Western Illinois, Inc. He assumed his new position in January 2002 after previously serving as Senior Vice President of Operations/Chief Compliance Officer of Alexander Billing and Consulting, Inc, in San Antonio, Texas.

Brian M. Jacques '99, Topeka, KS, is an associate with Coffman, DeFries & Nothorn, P.A.



2000s

Jennifer M. Filla '00, Monument, CO, is with the Shepard's Division of Lexis Nexis as a Legal Editor.

Dale K. Kelven '00, Las Vegas, NV, has teamed up with Robert D. Johnson '00 to start the law firm of Johnson & Kleven LLC, in Las Vegas, NV.



Alumni enjoy reception in Washington D.C. hosted by James Slattery '75

Derek W. Miller '01, Lawrence, KS, has joined Sanders Konkright and Warren LLP as an associate and will practice in the areas of product liability, construction and insurance-defense litigation.

Andrew D. Smith '01, Las Vegas, NV, has completed an LLM in European & Comparative Law from the University of Limerick in Limerick, Ireland. He is an Associate for fellow Washburn alums Dale Kleven '00, and Rob Johnson '00, at Johnson & Kleven LLC.

Hillary Hayes '02 has joined the labor and employment department at Blackwell Sanders Peper Martin L.L.P. as an associate.

Sarah McLean '02 has joined the labor and employment department at Blackwell Sanders Peper Martin L.L.P. as an associate.

Luke Sobba '02 has joined the firm of Morris, Laing, Evans, Brock & Kennedy, Chartered, Topeka, KS as an associate attorney. Sobba will practice in a broad range of legal disciplines, including commercial law, education law, and civil litigation. Sobba is a member of the Kansas and Topeka bar associations and is admitted to practice in Kansas state courts and U.S. District Court in Kansas.

Donor Honor Roll

JULY 1, 2001 TO JUNE 30, 2002

DEAN'S CIRCLE SOCIETY

The following donors are recognized as exemplary and major benefactors of the Annual Fund.

Their support allows Washburn University School of Law to sustain and enhance quality legal education. The Society recognizes donors whose annual gifts are \$1,000 or more.

Second Century Club

This designation recognizes donors of gifts of \$10,000 or more.

Eloise M. Humpage
Gerald L. Michaud '51
The Honorable Joseph W. Morris '47
Prof. David E. Pierce '77
Keith F. Quail '37
Fred J. Spigarelli '70
The Williams Companies

Dean's Advisor

This designation recognizes donors of gifts of \$5,000 or more

Thomas J. Corcoran Jr. '79
Foulston & Siefkin, L.L.P.
Halliburton, Inc.
David J. '76 & Cynthia G. Heath
Gwen S. Holmes
Delano E. Lewis Sr. '63
Joseph L. McClymond '52
Philip C. Pennington '84
Norman R. Pozez '80
Cloyd G. Pugh '47
Eldon R. Sloan '33

Delmas Hill Fellows

This designation recognizes donors of gifts from \$2,500 to \$4,999.

AMC Entertainment, Inc.
Anthony S. Barry '89, Donald D. Barry '65
& Barry Law Office, L.L.C.
Rita J. Bicknell '95
The Boeing Company
Prof. James M. Concannon III
D. Duke '73 & Helen E. '76 Dupre
John R. Fatzner
Fisher, Cavanaugh, Smith & Lemon P.A.
Philip A. Harley '74
Richard C. Hite '53
Hite, Fanning & Honeyman, L.L.P.
Paul R. Hoferer '75
Dean Dennis R. Honabach
Anthony D. Link '81
Martin, Pringle, Oliver, Wallace & Spikes, L.L.P.
Frank C. Norton '56
SBC Communications, Inc.
Edward H. '73 & Jill R. Sondker
Richard D. Terrill '79
The Hollis Foundation, Inc.
Westar Energy

President's Club

This designation recognizes donors of gifts from \$1,000 to \$2,499.

The Honorable Bryce A. '83
& Jana D. Abbott '84
Thomas A. Adrian '69
Martin R. Ahrens
American Board of Trial Advocates
AmerUs Annuity Group
Mark G. Ayesh '79
David M. Baer '78
Bill D. Berkley '75
William D. Buntin '56
Burlington Northern Sante Fe
H. Allan Caldwell '73
Stephen W. Cavanaugh '80
Cessna Aircraft Company
Prof. John E. & Carol W. Christensen
Marck R. Cobb '89
Steven G. Cooper '73
Covington & Burling
The Honorable Sam A. Crow '52
Gladys H. Doop '41
Prof. Myrl L. Duncan
Eugene M. Elliott '35
Prof. Linda D. Henry Elrod '72
Emerson Electric Company
Richmond M. Enochs Jr. '63
William J. Fitzpatrick '67
Jack D. Flesher '72
Ralph B. Foster '50
Franklin D. Gaines '60
Jacob S. Graybill '67
William H. Greig '76
John R. Hamilton '65
Stuart A. Haney '83
Robert F. Hartsook '79
John F. Hayes '46
Mark V. '77 & Lisa Hefner Heitz

**President's Club
(CONTINUED)**

This designation recognizes donors of gifts from \$1,000 to \$2,499.

Leslie Hess '85
Hinkle, Elkouri Law Firm, L.L.C.
Winton M. Hinkle '68
B. Jane Chandler Holt '85
The Honorable Steven L. Hornbaker '73
Laura L. Ice '84
Pedro L. Irigonegaray '73
James M. Jeweler '90
John W. Johnson '73
Lynn R. '73 & Jacqueline L. Johnson
John K. Kleinheksel '72
Roy A. LaCoursiere
Gerald J. Letourneau '62
Richard J. Lind '83
Robert L. Locke '66
Richard V. Lohman '76
Terry L. Mann '86
Michael C. Manning '77
The Hon. Christel E. Marquardt '74
Gary R. Mathews '77
Prof. Nancy G. Maxwell
Carl L. McCaffree '72
Bessie Mae McIntosh '40
Mr. & Ms. Manuel B. Mendoza '58
John Terry '72 & Robin L. Moore '80
Brian J. '85 & Dana S. Niceswanger '85
Joe L. Norton '76
Charles A. O'Hara '76
James D. Oliver '75
Phillips Petroleum Company
Jaime Porter
James W. Porter '35
Mr. & Ms. William E. Porter
W. Bradley Post '54
William D. Powell '69
Thomas F. Puckett '77
Prof. Steven & Mary Ramirez
Prof. Sheila M. Reynolds
Donald W. Rupert '76
Prof. David L. '65 & Rita Kay Ryan

Rosemary Saldan-Pawson '83
Donald P. '57 & Marjorie C. Schnacke
Shell Oil Company
Sprint
Pamela R. Stabler '81
William T. Tinker Sr. '37
Paul M. Ueoka '74
Charles P. Vaughn '81
C. Odell Weidner '82
Mr. & Mrs. Francis M. Winterburg

DEAN'S HONORS SOCIETY

The following generous alums and friends are recognized for their loyalty and interest in supporting quality legal education. Their support is vital to the progress of the Law School. The Society recognizes these donors whose annual gifts are \$250 to \$999.

Cum Laude

This designation recognizes donors of gifts from \$500 to \$999.

Kevan D. Acord '84
Prof. J. Wendell Bayles
Robert L. Jr. '86 & Terri L. '86 Bezek
Dana E. Brewer '77
Glenda R. Cantrell '80
Mark E. '85 & Nancy L. '85 Caplinger
John M. Collins '91
Conoco, Inc.
Jeffrey K. Cooper '85
Susanna Coxé '92
M. Duane Coyle '80
& Donna M. Schmidt '80
Terry C. Cupps '82
S. Lucky DeFries '78
Daniel M. Dibble '59
Wade A. Dorothy '78
David K. Duckers '74
Dean Allen K. & L. Guen '84 Easley
Jeffrey O. Ellis '77
Mark D. Elrod '72
Michael S. Ertz '94
John R. Frazier '57
Janet Frickey '80
Lyman G. Friedman '43
Michael G. Glover '79
Frederick W. Godderz '69
Athur S. Goldberg '39

Sandra W. Hazlett '78
Rex W. Henoch '83
Leigh C. Hudson '75
Interstate Brands Corporation
Curtis M. Irby '71
Marcia L. Johnston '74
Kansas Gas Service, a Division of ONEOK
W. Terrence Kilroy '77
Rex K. Linder '74
Scott K. Logan '80
Richard V. Lohman '76
Michael F. Mahoney '79
Andrew C. Marquardt '92
Joyce H. Martin
Kay McLeod '99
Daniel D. Metz '66
James M. Milliken '69
David H. Moses '79
Edward J. Nazar '78
Northwestern Mutual
Norton, Wasserman, Jones & Kelly
Linda S. Parks '83
Robert J. Perry '79
John D. Petersen '78
John B. Rathmel '76
Sidney A. Reitz '76
Zackery E. Reynolds '82
Prof. William Rich
Darci L. Rock '75
George J. Savin Jr. '73
The Security Benefit Group of Companies
Mark A. Shaiken '81
Craig Shultz '78
Judyanne Somers
William J. Spriggs '64
Lois S. Spring
State Farm Companies Foundation
Edward Stevens '41
Timothy J. Suttle '74
David R. Tripp '71
Gertrude E. Ueoka
United Parcel Service
Washburn Student Bar Assn.
M. Kathryn Webb '83
Jeffrey F. Whitham '79
James T. Wigglesworth '71
Calvin K. Williams '78
T. Michael Wilson '72
Warren B. Wood '74

Dean's Honors

This designation recognizes donors of gifts from \$250 to \$499.

Charles C. Amos '82
The Honorable Richard D. Anderson '80
Charles H. Apt III '80
Robert L. Baer '77
Daniel B. Bailey '87
Vaden F. Bales '75
Robert M. Barnes '83
Corey S. Berger '80
John F. Bergner '82
Russell E. Bishop '76
Michael F. Blevins '80
Lloyd C. Bloomer '41
Bruce E. Borders '69
Larry R. Bordner '98
Ray L. Borth '69
Wade H. Bowie Jr. '99
Jacqueline I. Branda '87
Roy C. Breedlove '77
Robert C. Briscoe '84
The Honorable & Mrs. Wesley E. Brown
The Honorable James P. Buchele '66
George A. Budd IV
W. Matthew Busch Jr. '76
Wm. David Byassee '75
Richard C. Byrd '47
David R. Carpenter '94
Don A. Cashman '64
Dr. & Ms. Leszek Charomanski
Robert W. Christensen '80
Paul T. Cleavenger '89
Kim R. Cocklin '81
Mark A. Corder '77
Joseph E. Cosgrove Jr. '80
The Honorable Daniel D. Creitz '85
M. Wayne '60 & Carolyn J. Davidson
Lawrence A. Dimmitt '68
Jerry E. Driscoll '77
J. Charles Droege '84
John M. Duma '81
Thomas H. Duncan '76
Cherie L. Durst '99
Darcy J. Dye '94
Mr. & Ms. James M. Farrell
Douglas C. Fincher '98
Lori A. Fink '85
John G. '86 & Leslie Spencer '90 Fowler
Robert G. Frey '70
The Honorable Karl W. Friedel '64
Warren F. Frost '87
Angel M. Garcia-Oliver '91

**Dean's Honors
(CONTINUED)**

*This designation recognizes donors
of gifts from \$250 to \$499.*

John B. Gibson '86
H. Marvin Gilmore '79
Glassman, Bird & Braun L.L.P.
Alan C. Goering '76
Gerald L. Green '76
Scott J. Gunderson '79
Lawrence M. '84 & Annette '83 Gurney
Bradley E. '80 & Terri S. Haddock
E. Charles Hageman '49
Patricia E. Hamilton '87
Bryan M. Hastert '91
Anne M. Haught '90
Eric S. '96 & Amy E. '96 Heath
Arne T. Henricks '68
Michael D. Herd '82
Samuel M. Herrera '89
Frederick J. Hess '71
G. Mike Hilgers '55
Gerald W. Hill '69
The Honorable Steven L. Hornbaker '73
Edward J. Hund Jr. '71
Roberta R. Johnson '82
Rodney L. Joyce '76
Craig H. Kaufman '82
William J. Kelly '75
J. Michael Kennalley '76
Jeffrey L. Kennedy '84
& Patricia A. Gorham '77
James A. Kent '75
Janet K. Kerr '87
W. Robb King '79
Dennis D. Kirk '75
Kurt F. Kluin '82
Mark W. Krusor '76
Gary L. Lane '74
Karen S. Lee '83
Thomas G. Lemon '93
F. Stannard Lentz '67
The Honorable C. Frederick Lorentz '69
Wm. Rex Larson '75
Ward E. Loyd '68
Jenifer L. Lucas '75
John R. Luttjohann '83
Michael J. Manning '69
Keith L. Mark '86
David K. Martin '84
James E. Martin '73
Charles M. Masner '82
Gary D. McCallister '75
David L. McComb '59
Leo H. McCormick Jr. '68
Garry McCubbin '81
Bessie M. McIntosh '40
James F. McMullin '86

Darrell E. Miller '72
Kari L. Milliken '96
Mobil Pipe Line Company
Wayne D. Morris '78
Otis W. Morrow '73
Daniel L. Muchow '81
Larry J. Mundy '77
Patrik W. Neustrom '77
Patrick R. Nichols '77
Charles G. Niernberger '50
Victoria L. Nilles '98
Carol North '93
Blanca L. Ocampo '87
J. Larry Odom '77
Gene M. '63 & Judith L. '82 Olander
Arthur E. Palmer '63
Fred F. Paoli Jr. '79
Matthew P. Patterson '96
Prof. Gregory J. & Joan Pease
Paul G. Perez '74
Elvin D. Perkins '48
Frederick C. '66 & Cheryl L. Perz
Jerry L. Pickerill '70
Harold T. Pickler '77
Harold E. Pierce '77
Robert A. Prentice '75
Carl W. Quarnstrom '57
John M. Quinn '83
Randall K. Rathbun '78
John A. Reynolds '88
Frank M. Rice '59
John S. Robb '78
A. Michelle Roberts '92
G. Craig Robinson '79
The Honorable Dale E. Saffels '49
Susan G. Saidian '88
Steven R. Sanford '85
Karie L. Sanoba '92
The Honorable Kim R. Schroeder '82
Gerald W. Scott '64
Mark A. Scott '93
John H. Shaffer '54
Dick E. Sherbondy '74
John N. Sherman Jr. '49
J. Richard Showalter II '91
John M. Simpson '65
S. David Simpson '75
R. Brandon Smith '92
Michael L. Snider '85
Douglas C. Spencer '69
Stanley Spurrier III '83
Don B. Stahr '53
Stinson, Morrison, Hecker L.L.P.

Roger D. Struble '82
Trisha Thelen '85
Steven M. Tilton '88
Irwin S. Trester '68
C. Geraldine Umphenour '86
Terry L. Unruh '79
Mary C. Van Slyck
William A. Vickery '83
Norris D. Walter '59
Howard N. Ward '79
Roger W. Warren '88
The Honorable John L. Weingart '77
W. Keith Weltmer '37
Edwin M. Wheeler Sr. '55
Toni Ramirez Wheeler '97
Scott R. Willoughby '83
John B. '78 & Teri Wilford '78 Wood
The Honorable John B. Wooley '56
James C. Wright '63
Ronald E. Wurtz '73
Vanessa R. Zerzan '98
David N. Zimmerman '79

CONTRIBUTORS

*This designation recognizes donors
of gifts up to \$249.*

David K. Aadalen '79
Gerald T. Aaron '66
The Honorable Bob L. Abbott '60
James J. Abbs '85
Carolyn A. Adams '81
Robert M. Adrian '79
Glen-Peter Ahlers Sr. '87
Paul E. Ailsieger '92
Dawn E. Akin '95
Shari M. Albrecht '84
William F. Aldridge '65
William A. Alford III '99
The Honorable Donald L. Allegrucci '63
The Honorable Adrian J. Allen '54
Evelyn L. Allen '85
Joseph A. Allen '90
M. Lou Allen '85
Sonya L. Allen '94
C. Frank Allison Jr. '84
John E. Altenborg '48
David S. Ament '77
Marian Amrein '84
AMSTED Industries, Inc.
Anton C. Andersen '86
Charles D. Anderson '50
John Anderson III '75
Philip J. Anderson '74
Nancy J. Anderwich '96
Susan D. Andrews '86
Samantha Parks Angell '00
Stephen B. Angermayer '88
Louis Angles '88
Anheuser-Busch Companies Inc.
Anonymous
Anonymous
Linden G. Appel '77
Kathryn D. Arbuckle-Higdon '86
Tim Arehart '82
Kevin J. Arnel '87
D. Todd Arney '92
Christopher G. Arth '95
Paul E. Artzer '68
Evangelo Arvanetes Jr. '95
Narra S. Asher-Phillips '53
Timothy M. Aylward '82
Joseph R. Bachand '94
Rachel B. Bachand '95
Larry R. Baer '77
Deena M. Bailey '97
Rick E. Bailey '83
The Honorable Catherine M. Baird '84
Anne L. Baker '79
Patricia E. Baker '79
Bill Baldock '59
John C. Ball '99
Prof. Megan Ballard
Despo Baltoumas-MacNeill '84
Albert R. Bandy '78
Denise E. Bandy '78
Lester L. Banks '54
Michael A. Barber '89
J. Diane F. Barger '84
Edward L. Barker '79
Randy M. Barker '84
Tom R. Barnes II '88
William E. Bartholdt Jr. '82
Harry M. Bass '86
Jason M. Baxendale '99
Don Baxter '53
David A. Bayles '96
Douglas C. Beach '80
Gary A. Beahm '69
The Honorable James G. Beasley '66
Donald L. Beck '70
Terry E. Beck '75
Kevin T. Beckwith '92
The Honorable Robert J. Bednar '73
R. Scott Beeler '79
Harold S. Beims '68
Kim A. Bell '90
Sean W. Bell '96
Stacy G. Friend Bell '98

CONTRIBUTORS

(Cont.)

*This designation recognizes donors
of gifts up to \$249.*

The Honorable Larry E. Bengtson '65
Lawrence O. Bengtson '50
Kelli J. Benintendi '93
Leigh P. Bennett '86
Peter W. Bennett '84
Eric R. Benton '81
Kevin N. Berens '99
Richard N. Berger '80
Keith B. Berkholtz '69
Paul D. Berkley '56
Mary Beth Bero
Shari L. Berry '94
Jeanette S. Bertelson '77
Mark V. Beshears '76
Bruce W. Beye '82
Sharad V. Bhatia '85
Edwin H. Bideau III '75
Gregory J. Bien '81
Galen E. Biery '75
Robert E. Bigelow '70
Michael R. Biggs '79
W. Daniel Biles '78
Amy J. Bipes '98
John T. Bird '74
Gary E. Bishop '86
David C. Black '87
John B. Black '76
John V. Black '63
Karen A. Black '76
Thomas V. Black '89
Richard M. Blackwell '80
Steven K. Blackwell '85
Heather L. Blanck '98
Steven C. Blanck '97
Aaron T. Blase '93
Mark P. Blenden '74
Gerald R. Blixt '85
Richard A. Boeckman '78
Paul R. Boeding '72
Alan M. Boeh '74
John D. Boeh '77
William H. Boettcher Jr. '58
Brett C. Bogan '92
Vincent L. Bogart '55
Donna F. Bohn '90
Joan P. Bokermann '95
Duane W. Bolze '56
Debra L. Bonewitz '97
Cline I. Boone '96
Quentin J. Boone '01
Joseph W. Booth '95
Thomas E. Borrego '93
India N. Boulton '99
Jonathan T. Boulton '00
David W. Bowers '78
The Honorable Dan D. Boyer '75
Melinda Hoyle Bozarth '83
Dana A. Bradbury '83
Brenda L. Braden '80
Paul E. Braden '80
Victor J. Braden '98
Clark C. Bradshaw '69
Tara L. Bragg '96

James V. Bransten '81
Glenn R. Braun '81
John D. Braun '80
Lelyn J. Braun '59
Rogers L. Brazier Jr. '83
The Honorable J. Patrick Brazil '62
Kelli L. Breer '95
Kevin J. Breer '99
Douglas J. Brehm '88
Susan J. Breier '86
Jill Bremyer-Archer '80
Charles E. Brennan '52
Jeffery R. Brewer '82
William E. Brewer '82
The Honorable Daniel L. Brewster '72
The Honorable David F. Brewster '68
The Honorable Joseph Bribiesca '77
Kevin M. Bright '99
Natalie S. Bright '98
Kaylene M. Brin '92
J. Robert Brookens '78
David W. Brooks '85
David D. '81 & Bonnie Broomfield
Constance L. Brown '46
D. Scott Brown '86
Harley G. Brown III '83
Kathleen H. Brown '88
Russell A. Brown '85
James E. Browne '85
Paula L. Brumbelow '90
M. Jennifer Brunetti '90
Robert A. Brunig '76
David H. Brunjes '80
The Honorable David E. Bruns '84
Michael F. Brunton '81
The Honorable Kyle A. Bryson '88
Samuel J. Buccero '85
John M. Buchanan '88
Vernon E. Buck Jr. '78
David V. Buckley '62
Mert F. Buckley '77
Brice E. Buehler '69
Lawrence T. Buening Jr. '76
Forrest A. Buhler '77
Roy L. Bulkley '49
John R. Bullard '85
Paulette R. Burgess '96
George E. Burket III '72
Brian S. Burris '88
The Honorable Thomas A. Bush '52
Francis J. Butel '94
Elwin F. Cabbage '56
Glenda L. Cafer '87
The Honorable Russell D. Canaday '78

Terill E. Canfield-Eye '02
Harriet E. Caplan '76
Michael A. Card '95
Michael S. Cargnel '00
Timothy J. Carkhuff '79
Derrick C. Carpenter '96
Davis S. Carson '50
Michelle M. Carter '99
James C. Cavanaugh '87
Byron M. Cerrillo '84
Prof. Deborah Challener
The Honorable Timothy J. Chambers '77
Richard F. Chatfield-Taylor '90
Tracey Samantha Chechele '88
Steven P. Childs '74
James W. Chipman '94
Jeffrey A. Chubb '78
Gary L. Church '79
Bruce J. Clark '79
Kenneth M. Clark '81
Brenda J. Clary '98
Richard B. Clausing '42
June Ellen Claydon '79
Louis M. Clothier '81
Michael L. Clutter '71
William M. Cobb '65
Barbara J. Coen '84
The Honorable Floyd H. Coffman '47
Bernard D. Cohen '37
Marc W. Colby '77
C. Mark Cole '68
Craig E. Cole '84
Joseph M. Coletta '83
Robert J. Coletta '85
Chadler E. Colgan '00
Clinton D. Collier '94
Craig E. Collins '88
J. Gregory Colston '75
Eric A. Commer '80
Ray L. Connell '76
Martin E. Conrey '84
The Honorable John E. Conway '63
John E. Cook '76
Stacy L. Cook '93
Dale H. Cooper '54
Stacy L. Cooper '84
Stephen H. Coover '80
Terry E. Cordes '80
Mr. & Ms. Lee Cornetta
Richard F. Corson '85
Christopher G. Costello '82
Edward J. Costello '49
Prof. Peter A. Cotorceanu
Robert A. Coulthard '00

Wendell F. Cowan Jr. '74
J. Brian Cox '81
Daryl V. Craft '77
Tina Crawford '86
Terry D. Criss '87
Billie Jean Crockett '92
Daniel W. Crow '93
Michael S. Crowe '92
Matthew S. Crowley '89
Kim W. Cudney '89
Robert F. Cunningham '59
Jack J. Dale '97
William J. Daley '75
Whitney B. Damron '87
John M. Davies '76
Clark H. Davis '80
D. Edward Davis '62
Jefferson W. Davis '98
Paul T. Davis '98
Wallace F. Davis '73
Steven C. Day '78
Gregory A. Dean '74
David B. Debenham '80
Michelle A. DeCicca '94
K. Alan Deines '77
Shawn R. DeJarnett '93
Van R. Delhotal '73
Lara L. Delka '96
Danielle D. Dempsey-Swoopes '92
Dustin L. '94 & Suzanne DeVaughn
Richard M. Dibblee '83
The Honorable M. Joe Dickinson '82
Douglas F. Dieker '97
Esther W. Digh '00
Koula Dimakarakos '97
Theodore M. Dinges '79
The Honorable Donna K. Dixon '84
Herbert K. Dodd '56
Frederick J. Dodds III '74
James C. Dodge '98
Tammy R. Dodson '94
Donaldson Company
Christopher J. Daskocil '87
J. Mark Doty '90
The Honorable Jules V. Doty '50
Robert E. Dreaan '96
David B. Duer '00
Paul V. Dugan Jr. '93
Duke Energy Field Services
Alan L. Dunavan '77
Brian P. Duncan
Stacey L. Dungan '87
Kathy S. Dunkin
Lee K. Durham '96

CONTRIBUTORS

(Cont.)

*This designation recognizes donors
of gifts up to \$249.*

- M. Jill Dykes '93
William F. Ebert III
Robert D. Eggleston '75
Britt J. Ehlers '99
Bart E. Eisfelder '71
Kenneth J. Eland '84
Wesley T. Elkins '80
The Honorable Jerry G. Elliott & Debra S.
Duncan '86
Stephen A. Elliott Sr. '77
The Honorable William B. Elliott '75
Susan K. Ellis '79
H. Philip Elwood '71
Charles T. Engel '85
Sergio H. Enriquez '93
Arden K. Ensley '54
Elizabeth G. Ensley '81
Todd D. Epp '84
Yvonne M. Erzen '83
The Honorable J.D. Euler '65
Jack R. Euler '53
Douglas R. Everley '74
Jimmie C. Ewing '97
Rolland J. Exon '82
The Honorable John R. Eyer '77
Pamela L. Falk '92
Roger L. Falk '78
Dana L. Fanoele '93
John L. Felder '73
Kenneth R. Fenley Jr. '97
Keith R. Fevurly '76
Tara L. Fiebach '03
Stephen C. Fiebiger '83
Thomas R. Fields '90
Richard W. Files '97
Richard L. Finn '67
Elizabeth Fischer
Charles S. Fisher Jr. '51
Alice M. Fitzgerald '79
James G. Flaherty '82
The Honorable Harold E. Flaigle Jr. '74
James P. Flanigan '86
Linda J. Fleeker '89
The Honorable Robert J. Fleming '68
Michael N. Flesher '85
Jack Focht '60 & Gloria G. Flentje
Beth R. Foerster '84
Kent Foerster '90
Richard V. Foote '58
Patrick T. Forbes '70
Carol L. Foreman '80
Daniel W. Forker Jr. '66
Richard A. Forster '86
Michael V. Foust '72
Mark R. Frame '91
Karen L. France '84
Prof. John J. Francis
Curtis A. Frasier '76
The Honorable Robert J. Frederick '75
David S. Fricke '92
James R. Friend '79
Everett Fritz II '79
Terry R. Fuller '79
Norman J. Furse '67
- Ronald N. Gaches '78
Kenneth G. Gale '80
Carl A. Gallagher '81
Marian M. Ganzer '95
L. Stephen Garlow '79
Kerry M. Gasper '85
Bruce T. Gatterman '78
David D. Gaumer '61
Guy F. Gebbia '83
Michael C. Germann '76
The Honorable Robert L. Geron '69
Michael D. Gibbens '78
Carl G. Gibson '87
John B. Gilliam '87
Cydni K. Gilman '78
Prof. Alex Glashauser
Robert F. Glassman '50
Sharon B. Gloyer '94
Marlo E. Goering '66
Robert M. Going Jr. '83
Jeffrey R. Gomel '86
Nancy N. Goodall '83
Gerald L. Goodell '58
Ronald J. Goodeyong '88
Ronald R. Gooding '79
G. Verne Goodsell '74
Randy D. Gordon '91
Dana L. Gorman '84
Stephen M. Gorny '94
Michael K. Gorrell '75
Rebecca M. Gould '84
Robert L. Gowdy '57
Steven W. Graber '75
The Honorable Thomas H. Graber '67
Steven K. Gradert '86
Christine M. Graham '94
John M. Graham Jr. '94
Kevin A. Graham '95
Margaret A. Graham '95
Kevin J. Grauberger '98
Lynne M. G. Graves '86
Charles S. Gray '76
Paul L. Gray Sr. '51
Kimberly S. Green '88
Frederick J. Greenbaum '80
E. Jay Greeno '83
Paul S. Gregory '85
Prof. Ronald C. Griffin
William H. Griffin '73
Carlene J. Griffith '93
Jerry L. Griffith '57
Karen L. Griffiths '78
Daniel J. Gronniger '87
Arnold J. Grundeman '69
Richard G. Guinn '80
Scot L. Gulick '84
Kenneth S. Gully '87
John D. Gutierrez '92
- Lloyd H. Haag '49
Natalie G. Haag '85
Erica D. Haas '99
Keith A. Haas '91
Michael H. Haas '69
Amy E. Hackler '79
The Honorable Mickey J. Hadwiger '86
Stephanie J. Haggard '01
Lowell F. Hahn '61
Steven J. Halbach '88
Connie S. Hamilton '87
James L. Hammer '74
Byron K. Hammond '94
Thomas E. Hammond '79
Hans C. Hansen '74
Larry L. Hapgood '72
Gary B. Harbaugh '76
David J. Harding '74
Philip W. Hardman '81
Ronald H. Harnden '73
Michael L. Harris '78
The Honorable Muriel E. Harris '76
Jennifer M. Harris-Berger '93
The Honorable Gerald W. Hart '76
Amy L. Harth '94
Emily A. Hartz-Jensen '01
Susan C. Hascall '97
Alan N. Hassler '81
Michael W. Hastings '87
Donna Haverkamp
Kenneth C. Havner '72
Dennis P. Hawkins '99
Jerry D. Hawkins '97
David A. Hawley '90
Katherine L. Hays '98
Donald S. Hayward '74
Barbara G. Head '86
Brenda L. Head '92
Randy M. Hearrell '70
James C. Heathman '90
Mary Ann Heckman '89
Richard L. Hedstrom '60
Kenneth R. Heer '68
Bret A. Heim '96
Michael R. Heim '82
David J. Heinemann '73
Danton C. Hejzmanek '76
The Honorable Jerome P. Hellmer '74
Eugenia K. Helm '80
Linda J. Helm '81
Thomas C. Henderson '75
Ronald E. Henke '83
Keith R. Henry '75
Tracy L. Henry '96
Michael D. Hepperly '77
The Honorable Harold S. Herd '42
John E. Herman '58
Allison L. Herr '90
- Paul C. Herr '87
Gary S. Hess '87
J. Francis Hesse '50
John J. Hesse Jr. '69
Karl N. Hesse '92
The Honorable Michael J. Heydt '79
David W. Hildreth '81
Debra A. Hockett-Clark '93
Michael L. Hodges '78
Earl E. Hodgson Jr. '58
Robert D. Hoehn '80
Paula D. Hofaker '93
Keith D. Hoffman '76
H. Kent Hollins '70
Marshall S. Honeyman '91
The Honorable E. Leigh Hood '82
Chad L. Hooker '93
Clifford R. Hope Jr. '50
Dennis L. Horner '74
Patricia Horner '87
Marilyn J. Horsch '90
Thomas C. Hosty '89
Bruce M. Hotchkiss '60
Harold A. Houck '96
Garry L. Howard '79
Jay M. Howard '93
Mary V. Hower '79
Gary M. Howland '80
Clark R. Hudson '90
Alan D. Hughes '93
Michael R. Hull '87
Wayne E. Hundley '59
Mark C. Hunter '92
Patrick J. Hurley '96
Deborah A. Huth '91
M. Christine Hutton '78
Ami S. Hyten '98
IBM Corporation
Verlin A. Ingram '76
Thomas T. Inkelaar II '88
The Honorable Fred S. Jackson '60
Jeffrey D. Jackson '92
Joel B. Jackson '80
Michael M. Jackson '80
Rick Jackson '81
Tessa K. Jacob-Gaume '92
Shirley A. Jacobson
Brian M. Jacques '99
Sandra L. Jacquot '89
James R. James '53
Vernon L. Jarboe Jr. '77
Mark T. Jeffers '79
Linda P. Jeffrey '77
Jill A. Jenkins '92
David Ash Johnson '49
Julianne Johnson '98
Karl G. Johnson '77
Marie A. Johnson '79
Robert S. Johnson '48
Robyn Euler Johnson '88
Steven K. Johnson '87
Michael K. Johnston '79
Jeffrey W. Jones '81
Jerome R. Jones '91

CONTRIBUTORS

(Cont.)

*This designation recognizes donors
of gifts up to \$249.*

- Jim C. Jones '62
John F. Jones II '72
Jon S. Jones '62
Michael G. Jones '88
Michael W. Jones '86
Michael J. Joshi '89
Charles S. Joss Jr. '75
Peter A. Jours Jr. '87
Bryan K. Joy '81
Ronald D. Jung '87
Edward L. Kainen '88
Regina Y. Kane '93
Lawrence G. Karns '75
Melissa E. Kasprzyk '99
Darren K. Kearns '93
The Honorable J. Michael Keeley '82
Douglas J. Keeling '84
Gailen L. Keeling '55
Dennis J. Keenan '72
Robert E. Keeshan '75
Brenda R. Kelley '92
Clarence D. Kelley
Herbert A. Kelley '53
Shannon A. Kelly '98
Nanette L. Kemmerly-Weber '79
John D. Kemp '74
Ronald M. Kendrick '85
Glenn I. Kerbs '78
Kenneth L. Kerns '68
Prof. Liaqat Ali Khan
Ronald J. Kibbe '83
Jack H. Kim '95
Robert Kimberline
Stanley M. Kimble '81
Bruce W. Kinzie '77
John J. Kisner Jr. '84
Reindert J. Kleinherenbrink '89
The Honorable Tracy D. Klinginsmith '68
Linda J. Knak '98
Jeffrey C. Knapp '97
Don J. Knappenberger '75
Gary E. Knight '81
Kyle G. Knobbe '74
Joseph A. Knopp '77
Thomas J. Koehler '79
Lynda Koenemann '00
Daniel P. Kolditz '84
Christopher S. Korth '85
Michael D. Kracht '79
Eric G. Kraft '99
Bryan D. Krantz '83
Steven A. Kraushaar '85
Laurine R. Kreipe '82
Carl J. Kretsinger '67
Don C. Krueger '75
Kyle E. Krull '84
Steven W. Kruse '87
Shannon S. Krysl '80
Michael J. Kuckelman '90
Sarah S. Kwak '97
Ainka C. Kweli '94
Michael J. Laden '85
Steven M. Laiderman '82
Robert R. Laing Jr. '83
Mark T. Lair '83
Charley L. Laman '79
Jean A. Lamfers '86
Donna L. Lance '95
Ruth L. Landau '86
Eva M. Landry '94
Greer M. Lang '89
J. Jay Lang '95
Joe A. Lang '77
John E. Lang '62
Chelsey G. Langland '99
Timothy J. Langland '97
David S. Langston '72
The Honorable Karen L. Langston '75
John W. Lann '74
Daniel J. Larin '98
Kristine A. Larscheid '88
Eric J. Larson '76
Jeffrey J. Larson '87
Ralph L. Larson '54
Timothy J. Larson '83
Brian J. LaRue '87
Prof. Rogelio A. Lasso & Marianne Deagle '95
Robert W. Lattin '92
Gerald R. Lau '82
Jonathan L. Laurans '92
Maria D. Laurino '88
Jonathan J. Lauth '95
Lynn D. Lauver '83
Amy Ogden Lawlor '01
Mark O. Lawlor '00
Jae M. Lee '95
Terrence S. Leek '65
Pamela S. Leinwetter '95
C. Michael Lennen '74
Phillip U. Leon '58
Jeffrey D. Leonard '91
Stephen K. Lester '63
The Honorable Jan W. Leuvenberger '61
John M. Lewallen '98
Michael B. Lewis '93
Michael L. Leyba III '93
Benjamin M. Li '92
Thomas M. Lillard Jr. '50
Rita A. Lind '80
Stephen M. Lind '79
Jane E. Lindhout '87
Mark E. Lindstrom '83
Jeremy K. Linscheid '84
Myron L. Listrom '51
Steven S. Labell '78
The Honorable Tyler C. Lockett '62
Kevin W. Loeffler '89
Richard D. Loffswold Jr. '75
Thomas A. Loftus III '80
Albert J. Lopes '75
Enrique Lopez Jr. '91
Jack C. Lorenz '59
Curtis A. Loub '91
The Honorable Daniel L. Love '76
Holly A. Lowe '82
W. Rod Ludwig '76
Elmo A. Lund '59
Timothy G. Lutz '87
Jared S. Maag '95
The Honorable Louis B. Mack '76
S. Douglas Mackay '94
Glenn MacNeill '83
The Honorable James M. Macnish Jr.
Rich Madril '91
Keith C. Magnusson '74
Mary T. Malicoat '93
George E. Mallon '66
Peter G. Mangin '82
Douglas K. Manion '82
Steven D. Mank '86
Linda K. Manlove '91
Mark A. Manna '93
Norbert C. Marek Jr. '95
Cecilia T. Mariani '95
Elizabeth L. Marietta '90
David K. Markham '77
Susan Marshall '76
Barry D. Martin '77
David K. Martin '76
John O. Martin '71
Lynn E. Martin '68
Robert G. Martin II '81
Tammy Martin '88
Robert A. Martinez '89
Orvel B. Mason '81
Rhonda K. Mason '96
Scott C. Mason '97
J. Steven Massoni '74
Mark D. Masters '82
William H. Matarazzi '78
Robert S. Maxwell '78
John G. Mazurek '91
Paul A. McAlister '52
Jane B. McAllister '74
Rande A. McAllister '71
Curtis W. McBride '72
Shane T. McCall '91
Timothy P. McCarthy '82
Glenn P. McCarty '72
Joseph L. McCarville '77
Todd M. McCauley '93
The Honorable Larry McClain '71
Roger E. McClellan '93
David R. McClure '76
Thomas D. McClure '90
John F. McClymont '77
M. E. McCollam '82
Dennis M. McCool '77
Thomas R. McCue '52
Mary I. Browne McCuskey '75
Robert J. McElroy '84
James R. McEntire '77
Kathy McGhehey '89
Floyd L. McGinley '76
Mark J. McGivern '88
Timothy M. McGivern '91
Andrew J. McGowan '93
W. John McGuire '86
Judith A. McKee '76
Julia A. McKee '90
Julie A. McKenna '82
Craig R. McKinney '84
E. Gene McKinney '52
Joseph E. McKinney '86
David L. McLane '70
Matthew R. McLane '96
Mr & Ms. L. Deckle McLean
J. Brian McMahon '80
Michael E. McMahon '84
Calvin L. McMillan '58
John R. McNee '74
Thomas W. McNish '80
Kyle J. Mead '98
Larry R. Mears '70
The Honorable J. Byron Meeks '68
Phillip S. Mellor '53
Willard M. Mellott '76
David J. Melusky '84
Marcos A. Mendoza '89
Henry C. Menghini '91
Timothy C. Merchant '96
The Honorable Jerry L. Mershon '61
Brenda R. Mesker '00
Angelyn L. Miller '98
Monte L. Miller '84
Clyde E. Milligan '49
Jon C. Milliken '69
Bryson E. Mills '67
William G. Mills II '73
Charles E. Millsap '78
John O. Mingle '81
Stephen D. Minnis '85
Brent A. Mitchell '92
The Honorable Daniel L. Mitchell '73
David R. Mitchell '86
Linda R. Mitchell '00
Allen P. Mitchem '47
Brian J. Moline '66
Lawrence F. Montague '79
Michael R. Montero '96
Michael A. Montoya '88
Brenton B. Moore '76
Mark A. Moore '83
Warner Moore '50
Alan P. Morel '89
Anna M. Moretto '86
G. Daniel Morgan '80
Jack C. Morgan III '97
James M. Morgan '97
Morgan Lewis & Bockius, L.L.P.
Betsy J. Morgan-Garvin '87
Rhonda M. Moser '96
David D. Moshier '77
Christina D. Moss '91

CONTRIBUTORS

(Cont.)

*This designation recognizes donors
of gifts up to \$249.*

- James L. MowBray '91
Mary Beth Mudrick '81
Scott A. Mugno '83
John G. Mull '89
Dustin W. Mullin '99
Laurel S. Murdie '94
William E. Muret '84
Cleo G. Murphy '79
Rodney K. Murrow '90
Ronald C. Myers '62
Melanie K. Myrick '98
The Honorable Gary L. Nafziger '73
Deletria L. Nash '99
Frank A. Natchez '74
Robert D. Nelson '61
Ronald W. Nelson '81
Ellen G. Neufeld '79
Bill E. Newman '86
Jon E. Newman '94
Gale S. Newton Jr. '60
William T. Nichols '73
Gudrun M. Nickel '78
Katy S. Nitcher '85
April N. Nix '00
John C. Nodgaard '77
Nels P. Noel '96
Timothy W. Nohr '96
The Honorable Donald R. Noland III '76
Rita L. Noll '84
William H. Nollkamper III '71
Mahmud Noomohamed '90
Connie J. Nordboe-Tinker '81
Erick E. Nordling '85
William T. North '76
Jerry E. Norton '62
R. Austin Nothern '64
Larry D. Nuss '67
K. Kirk Nystrom '79
The Honorable J. Stephen Nyswonger '73
Paul D. Oakleaf '76
Donald C. Oakley '99
JoLynn Oakman '82
Louis K. Obdyke IV '75
Frank D. Oberg '40
Mr. & Ms. Chris O'Brien
Julie Fifer O'Connor '99
Nancy A. Ogle '91
Steven K. O'Hern '88
The Honorable Maurice P. O'Keefe Jr. '53
William C. O'Keefe '67
Jody R. Olberding '76
Allen E. Olson '92
Rachel Olson
Prof. Jalen O'Neil '87 & Kirk W. Lowry '87
Mr. & Ms. James J. Orth
Ruben Ortiz '97
James S. Oswald '77
Thomas C. Owens '74
OXY USA, Inc.
Ryan H. Pace '98
John W. Page '02
Stephen R. Page '77
Gregory J. Pappas '84
Kim T. Parker '82
Rev. & Mrs. Lyle G. Parker
Stanley R. Parker '81
Merle E. Parks '74
David L. Patton '66
The Honorable James A. Patton '75
Clinton E. Patty '98
James P. Payne '70
George H. Pearson III '81
Joyce A. McCray Pearson '89
Travis A. Pearson '93
Joe W. Peel '55
Kerri A. Pelton
The Honorable Gene B. Penland '61
Jennifer L. Perkins '97
Lynn L. Perkins '67
Howard I. Perry '51
Clarice J. Peters '83
Ted L. Peters '67
Patrice Petersen-Klein '97
Clinton B. Peterson '96
Gary M. Peterson '76
Philip C. Peterson '60
Stephanie L. Petrie '96
N. Trey Pettlon III '91
Prof. Lynette Petty '87
Douglas W. Phelps '82
Jan R. Pierce '71
Mark B. Pilley '79
Thomas J. Pinnick '76
R. Clinton Pittman '91
Larry J. Pitts '86
Douglas D. Pletcher '00
Jeffrey S. Pohl '90
Kimberly S. Pohl '91
Sally D. Pokorny '78
Elwaine F. Pomeroy '57
Marla C. Poor '90
Tony A. Potter '95
Charisse M. Powell '99
Jerry Powell '87
Todd D. Powell '98
H. Wayne Powers Jr. '74
Larry A. Prauser '68
Michael A. Preston '80
Scott M. Price '76
Michael A. Priddle '98
Douglas S. Pringle '79
The Honorable James T. Pringle Jr. '80
Jonathan F. Pritt '97
Wayne Probasco '51
Cloyd G. Pugh '47
The Honorable Terry L. Pullman '78
Mary Dey Purcell '88
Larry J. Putnam '76
David W. Queen '83
Marjorie A. Quinlan '49
James F. Quinn '83
Deborah Quirk '84
Peter A. Raith '95
Bradley C. Ralph '84
David M. Rapp '76
Gary H. '70 & Sue C. Ratzlaff
Charles R. Rayl '75
Raytheon Aircraft Company
James N. Reardon '73
James R. Redeker '98
Elizabeth J. Shannahan Redmond '81
Robert H. Reeder '60
Julie Reeves
Donald E. Reif Jr. '88
Gary S. Renick '81
Karen Wedel Renwick '84
William C. Reppart Jr. '93
The Honorable George S. Reynolds '42
Mitzi Alspaugh Rezin '90
Kathleen M. Rhoades '78
Arthur E. Rhodes '96
Carol Rhodes
Douglas C. Richards '71
Kim K. Richards '91
Jerry L. Ricksecker '73
Ann T. Rider '85
Calvin D. Rider '85
Roger A. Riedmiller '87
Patricia E. Riley '77
Richard R. Ring '77
RLI Insurance Company
Robert L. Roberts '61
Edward B. Robrahn '49
Louisa Rodriguez
Carol S. Rogers '77
Dennis D. Rogers '75
Jacquelyn E. Rokusek '93
William P. Ronan III '80
The Honorable Eric S. '84 & Elizabeth A. Rosen
Howard L. Rosenthal '74
Albert M. Ross '49
Walter H. Ross '77
Richard G. Rossman '57
Thomas O. Rost '66
The Honorable Douglas R. Roth '78
Robert J. Roth '55
The Honorable Steven M. Roth '89
Joyce Simmons Rubenstein '76
Michael A. Rump '82
Kay Y. Rute '80
Lawrence R. Rute '73
Scott L. Ruther '85
Shelley A. Ryan '87
Stanley C. Sager '57
Patrick M. Salisbury '74
The Honorable Keith Sanborn '50
Christopher D. Sanders '90
Rebecca A. Sanders '78
Donald G. Sands '32
Janette Satterfield '90
Walter A. Sawhill '50
SBC/Southwestern
Bell Telephone Company
Jeanie L. Schainost '92
William T. Schemmel '95
Bryon R. Schlosser '71
Michael A. Schlueter '86
Michael K. Schmitt '74
The Honorable Edward P. Schneeberger '73
Lawrence E. Schneider '77
Ronald L. '92 & Alison Ruth Schneider
Debra L. Schrock
Dwayne A. Schulke '73
Gerald O. Schultz '84
Richard L. Schultz '60
SueAnn V. Schultz '83
Gregory A. Schwartz '00
Pamela F. Scott '82
R. Douglas Sebelius '76
Bonnie J. Selby '88
Mark A. Sevalt '85
Patricia A. Sexton '94
Paul A. Seymour III '91
Patricia A. Shalhoob '91
Andrew E. Shapiro '83
Leslee R. Sharp '85
G. Richard Shaw '73
Gloria E. Shaw '67
Allen L. Shelton '68
The Honorable William Neil Shepherd '67
John C. Sherman '76
John D. Sherwood '65
Roger M. Sherwood '64
Steven C. Sherwood '74
James R. Shetlar '74
Gregory L. Shevlin '88
John R. Shirley '73
Shook Hardy & Bacon L.L.P.
Donald H. Shoop '76
John A. Showalter '72
Scott I. Showalter '84
Donald E. Shultz '54
H. Dean Shuman '54
The Honorable Philip L. Sieve '67
The Honorable Edward A. Simons '65
Carolyn R. Simpson '97
Kristy L. Simpson '81
Anthony M. Singer '98
Teresa L. Sittenauer '94
Clayton C. Skaggs '95
Gregory E. Skinner '87
Ralph E. Skoog '59
Mr. & Ms. Danny Slinkard

CONTRIBUTORS

(Cont.)

*This designation recognizes donors
of gifts up to \$249.*

- James W. Sloan '52
Kevin J. Small '83
Andrew D. Smith '01
Ann L. Smith '82
Bryan W. Smith '92
Christine M. Smith '00
The Honorable Dean J. Smith '59
Eric B. Smith '94
Kent P. Smith '66
Leon E. Smith Jr. '66
Richard D. Smith '89
Richard E. Smith '68
Robert L. Smith '64
Stephen J. Smith '74
The Honorable Tom R. Smith '70
Virgie A. Smith
Woody D. Smith '67
Barbara M. Smith-Duer '01
Lee M. Smithyman '77
William W. Sneed '80
Windell G. Snow '67
Brock R. Snyder '64
Frederick R. Snyder '79
John M. Solbach III '77
The Honorable Larry T. Solomon '76
Joanne Sorrentino '82
Floyd D. Sarrick '55
Edward B. Soule '65
Warren R. Southard '51
Joseph S. Spence Sr. '89
Kerwin L. Spencer '81
Steven L. Speth '85
Angela L. Spigarelli '98
Larry B. Spikes '74
Hayden B. St. John '70
Nicholas M. St. Peter '85
Naomi L. Stacy '99
Wayne M. Stallard '52
J. Harlan Stamper '60
Sabrina K. Standifer '99
Bryan P. Stanley '99
John R. Stanley '80
State Employees Association of Kansas
Mary Jane Stattelmann '88
Kyle J. Steadman '95
Barbara J. Steele '85
Patricia L. Steele '95
Lyndon B. Steimel '87
Charles C. Steincamp '93
Martha R. Steincamp '71
David L. Stephanides '92
Mary Stephenson '94
Stephen M. Stern '98
William T. Stetzer '96
Bill M. Stevick '50
Dale B. Stinson Jr. '51
Stinson, Morrison, Hecker, L.L.P.
Craig D. Stirn '80
Stanley K. Stoll '80
Jason M. Stone '00
JoAnn M. Stone '00
S. Philip Stover '76
Wayne T. Sr. '58 & Janet S. Stratton
A. Mark Stremel '91
Troy A. Stremming '94
Michael D. Strohbehn '78
The Honorable Fredrick B. Strothman '61
Lynette C. Stueve '97
Mark A. Stueve '97
Robert G. Suelter '74
D. T. Sullivan '99
David B. Summers '78
Scott S. Sumpter '83
Eric C. Svoboda '80
Janet S. Svoboda '76
Daniel L. Swagerty '68
James E. Switzer '83
Rodney H. Symmonds '78
Jeffrey L. Syrios '88
Robert L. Tabor '81
Gerald V. Tanner Jr. '82
Kathleen A. Tanner '83
Mary S. Tansey '82
The Honorable Stephen R. Tatum '74
William A. Taylor III '71
Anita M. Tebbe '86
Robert M. Telthorst '86
Gary R. Terrill '79
Lance D. Thaxton '94
Thomas L. Theis '76
Terri D. Thomas '88
David L. Thompson '72
Eric E. Thompson '99
Fred T. Thompson '66
Kandi J. Thompson '90
Robert A. Thompson '83
W. Bruce Thompson '80
Linus A. Thuston '95
John C. Tillotson '65
Matthew W. Tills '91
Robert E. Tilton '58
Cynthia L. Tinsley '96
The Honorable Nelson E. Toburen '67
Susan R. Todino '96
The Honorable Thomas L. Toepfer '75
M. Moran Tomson '69
John D. Tongier '82
Chanel P. Townsley '92
The Honorable Harold R. Towslee '71
Russell Y. Tsujii '89
Richard G. Tucker '73
Michael J. Unrein '71
Jeremy S. Unruh '99 & Julie Anne Goldberg
Martin E. Updegraff '61
David W. Urbom '77
Kathleen A. Urbom '80
Anthony A. Utter '77
George R. Vahsholtz '76
Thomas A. Valentine '69
The Honorable James W. Van Amburg '82
Roger A. Van Etten '89
Jay W. Vander Velde '74
Peter J. Vanderwarker '98
The Honorable James F. Vano '81
Janet M. Velazquez '80
Karen S. Verhoeff '94
Kim R. Verhoeff '87
Debra A. Vermillion '86
The Honorable Philip C. Vieux '76
Larry F. Vigil '89
J. Ronald Vignery '69
Christopher J. Vinduska '98
Adele Ross Vine '79
Spencer W. Viner '74
Dean Carol Vizzier
Paul K. Voelker '74
Catherine C. VonFeldt '94
Steve C. Vosseller '97
Andrew J. Wachter Jr. '69
Reginald V. Wade '89
Mark J. Wagner '85
Shelly R. Wakeman '91
H. Reed Walker '77
James A. Walker '76
Daniel C. Walter '77
Martin W. Walter '96
L. Dale Ward '90
Mark A. Ward '81
T. Lynn Ward '90
Bruce E. Wasinger '77
Robert M. Wasko Jr. '76
Dorothy J. Waters '93
Michelle M. Watson '97
Ronald D. Watson '69
Shannon D. Wead '97
The Honorable Joseph J. Weatherby '74
Wesley A. Weathers '69
Barbara M. Weians '88
William J. Weigel Jr. '78
Randall W. Weller '65
Douglas E. Wells '79
The Honorable James E. Wells '63
William A. Wells '68
Julian F. Weltsch '59
Rebecca J. Wempe '95
The Honorable Melvin B. Werner '72
R. Clark Wesley '59
John P. Wessling '72
Ruth C. West '76
Wayne K. Westblade '79
Western-Southern Foundation, Inc.
Mark J. Wetta '76
Vince P. Wheeler '85
Gary D. White Jr. '91
Broc E. Whitehead '81
Melinda S. Whitman '83
Donald R. Whitney '87
Mark C. Whitney '77
Larry H. Whitt '73
Duncan A. Whittier '78
Edward F. Wiegiers '57
The Honorable Warren M. Wilbert '77
David A. Williams '81
Ronald P. Williams '77
Darcy D. Williamson '82
Tom A. Williamson '73
Shari R. Willis '96
Evelyn Zabel Wilson '85
Michael T. Wilson '88
Travis M. Wims '94
Dennis J. Wing '71
Donna M. Winslow
Kathryn J. Winters '78
Martin E. Wisneski
Douglas P. Witteman '91
Joseph I. Wittman '79
Karen L. Wittman '91
L. Christopher Wittman '97
Bruce J. Woner '79
Colin D. Wood '00
Rebecca E. Woodman '87
Kathleen A. Wood-Rein '91
Nancy J. Woodworth '86
Patrick C. Woolley '93

CONTRIBUTORS

(Cont.)

This designation recognizes donors of gifts up to \$249.

Bruce D. Woolpert '84
Gerald W. Woolwine '83
Roy H. Worthington '74
Steven G. Wortmann '85
Rudy E. Wrenick Jr. '70
Douglas S. Wright '73
Thomas E. Wright '64
Barbara A. Wright-Beggs '93
Nina R. Wuestling '79
Richard C. Wuestling IV '80
Wendy A. Wussow '94
James O. Yates '51
Phylemon C. M. Yau '93
The Honorable Frank J. Yeoman Jr. '73
In Y. Yi '92
Melvyn T. Yoshii '71
Grady L. Young '75
Julia L. Young '78
Sharon L. Youngman '95
Trina K. Zagar-Brown '99
Anne P. Zellhoefer '85
Joseph W. Zima '72
Nicole M. Zomberg '99

Gifts Received In Memory of...

Gifts Received in Memory of Ronald W. Fairchild

Murray E. Anderson '77
Robert L. Baer '77
Prof. James M. Concannon III
Craig D. Cox '77
Steven L. Cranford '77
Rebecca W. Crotty '77
Jerry E. Driscoll '77
Ann L. Hoover '77
Prof. David E. Pierce '77

Gifts Received in Memory of Lyndus A. Henry

Mr. & Mrs. Bruce A. Adair
Holly P. Barnett
Juanita P. Barnett
Linda L. Davis
John C. Eisele
Dr. & Mrs. R. Glenn Elliott
Mark D. Elrod '72
Elizabeth Fischer
Mr. & Ms. Phillip A. Harris
Mr. '53 & Ms. James R. James
Katie Lilliston
Barbara S. MacLean
The Honorable Christel E. Marquardt '74
Mr. & Ms. Keith Martin
Prof. Nancy G. Maxwell
Sam & Carl L. '72 McCaffree
Lavone T. McIntosh
Mr. & Mrs. Ronald K. Miller
Mr. '69 & Mrs. James M. Milliken
Mr. & Ms. Gardner Savage
Mr. '68 & Ms. Richard E. Smith
Mr. & Ms. Stanley Voth
Washburn University School of Law Class
of 2005 Property Class B Section
Mr. '72 & Ms. Joseph W. Zima

Gifts Received in Memory of Arthur G. Johnson Jr.

Gerald L. Goodell '54

Gifts Received in Memory of H. Newlin Reynolds

Prof. Sheila M. Reynolds
Mr. & Ms. L. Stephen Rostine

Gifts Received in Memory of Prof. Donald F. Rowland

Lelyn J. Braun '59
Prof. James M. Concannon III
Dr. & Mrs. Donald F. Danker
A. F. Fitzgerald
Carla M. Hoisington
Richard C. Hoisington
Robert K. Hoisington
The Honorable Fred S. Jackson '60
Mary J. Jackson
James R. James '53
Mr. & Mrs. Henry W. Keller
Mr. & Ms. Kelley
Chelsey G. Langland '99
Timothy J. Langland '97
Jane B. McAllister '74
Stanley R. Parker '81
James N. Reardon '73
Linda M. Reardon
Prof. David L. Ryan '65
Mr. & Ms. Fred Shaw
Mrs. Douglas Torrey

Gifts Received in Memory of The Honorable Donald C. Smith Sr.

Janet Barr
Jim Barr
Marietta Barr
Neil Barr
Cindy Bartlett
Dr. & Ms. David P. Birch
Mr. & Ms. John Brychta
Mr. & Ms. John W. Carlin
Mr. & Ms. Jeffrey V. Clark
Ford County Clerk of the District Court Staff
Ann C. Frigon '80
Donald A. Frigon '78
Mr. & Ms. Roger A. Greene
The Hon. Harold S. Herd
The Hon. Tracy D. Klingensmith '68
Mr. & Ms. Ralph Lueker
David L. Patton '66
Pottawatomie County Attorney's Office
Pottawatomie County Clerk's Office
Jerry Repp
Mr. & Mrs. Frank Rose
The Hon. Steven M. Roth '89
Mr. & Ms. David L. Sheets
Danny J. Shipe
Cynthia M. Shipley
Nancy Shoup

Gifts Received in Memory of Prof. Raymond L. Spring

Prof. Megan Ballard
Elizabeth Fischer
Nanette L. Kemmerly-Weber '79
Jack C. Lorenz '59
William C. O'Keefe '67

PHONATHON 2002 2002 Phonathon In-Kind Gifts

Bagels Express
Ballard's Sports Outlet
Beauty First
Blockbuster Video
The Buzz
Candleman
Nancy L. Caplinger '85
Cards N Such
Prof. Deborah Challenger
Copper Oven
Prof. Peter Cotorceanu
Cracker Barrel
Design Forum, Inc.
DeVader Pools & Spas, Inc.
Edge of the Meadow
Elements the Salon
Fairlawn Plaza Style Center
Famewoods of Topeka
Prof. Alex Glashausser
Glenn, Cornish, Hanson & Karns
Hair Concept
Leslie Hess '85
His & Her Salon & Day Spa
Pedro Irigonegaray '73
Shirley Jacobson
Jeremiah Bullfrogs Bar & Grill
Jiffy Lube
Prof. Ali Khan
Robert Kimberline
Kinko's
Kitchen Gallery
Sonny Luarks
Lube Stop
Maggie Moo's Ice Cream
Prof. Nancy Maxwell
Prof. Loretta Moore
Outback Steakhouse
Prof. Gregory Pease
Phoenix Gallery Topeka
Prof. David Pierce '77
Prof. William Rich
RJ Carr's Family Bookstore
Louisa Rodriguez
Linda Selland
Doug Smith
Sun-Tana
Textbook Team
Topeka Public Schools
Topsy's Popcorn & Ice Cream Shoppe
Toys "R" Us
Trade Secret
Village Cleaners
Dean Carol Vizzier
West Ridge 8 Theatres
West Ridge Lanes & Family Fun Center
Whitelakes Family Fitness Center
Wild Bird House
Wynmoor Family Witness Center
Zercher Photo

1 9 3 0 s

W. Keith "General" Weltmer '37, Salina, KS, died Monday, Oct. 14, 2002, at the age of 89. He had been a professor at KU, where he was honored in 1982 as a University Distinguished Professor. He also taught for a short time at Washburn University. He founded the Annual Kansas Tax Conference in 1958 and was the first director of the KU Executive Development Program. He co-authored the textbook, "Cost Accounting," which was published by McGraw-Hill. Mr. Weltmer was appointed as the first Kansas legislative post auditor in 1972 and in 1975 was appointed by Gov. Robert Bennett as secretary of administration. He enlisted in the Kansas Army National Guard in 1930 and served six years in World War II. He re-entered the Kansas Army National Guard in 1948 and completed 43 years of service before retiring at the rank of brigadier general in 1973. He had been commanding officer of the 127th field artillery battalion, 127th field artillery group, 35th infantry division artillery and deputy chief of staff of the Kansas Army National Guard. Mr. Weltmer worked for Dun and Bradstreet as a young man.

1 9 4 0 s

Frank D. Oberg '40, Clay Center, KS, died Saturday, Oct. 12, 2002, at the age of 87. He practiced law in Clay Center from 1940 to 1942 and then became a special agent for the Federal Bureau of Investigation. He returned to Clay Center in 1945. He was Clay County attorney from 1951 to 1954.



Glenn L. Archer, Sr. '46, Silver Spring, Maryland, died November 15, 2002. He was 96. Mr. Archer was Dean of Washburn University School of Law in 1947-1948. A nontraditional student, Mr. Archer was a school principal and superintendent, director of professional relations for the Kansas State Teachers Association and, during 1939, administrative assistant to Kansas Governor Payne H. Ratner before entering Washburn Law at age 38. He had the distinction of being offered the position of dean several months prior to his graduation in 1946.

Mr. Archer asked for and was granted a year before accepting the deanship. For a short time he was partner in the Topeka firm of Allen, Ascough and Archer, served on the Kansas State Board of Education, and attended classes at Northwestern School of Law in Chicago. He returned to Washburn Law as dean in 1947.

Following his tenure at Washburn Law, Mr. Archer was founding executive director of Protestants and Other Americans United for Separation of Church and State. He held the post for 28 years, retiring in 1976. The organization is the nation's best-known advocate of absolute church and state separation and a major opponent of government aid to parochial schools. Mr. Archer described his affiliation with the organization in his autobiography, *The Dream Lives On: The Story of Glenn L. Archer and Americans United*.

Mr. Archer retained strong ties to Washburn University and the School of Law, where he established the Governor Payne H. Ratner Endowed Law Scholarship. He received the Washburn Alumni Association's Distinguished Service Award in 1976, an Honorary Doctorate of Education from the University in 1992, and Washburn Law's Distinguished Service Award in 1993.

Survivors include his wife of 75 years, Ruth Agnes Archer, a son and a daughter.

Lyndus Arthur Henry '48, died November 9, 2002, at an Overland Park, Kansas, nursing home. He was 82.

Mr. Henry was one of the first lawyers to open a practice in Overland Park, Kansas. He practiced law in Johnson County for 54 years, serving as county counselor and then as special counsel to the Johnson County Board of County Commissioners for over 25 years. He retired in 1993.

A Navy lieutenant during World War II, Mr. Henry started the Naval Reserve Public Relations Unit during the Korean War. He was a lifelong Republican, attending the 1952 Republican National Convention.

Survivors include his daughter, Professor Linda Elrod of the Washburn Law faculty.

Robert D. Bartram '48, Overland Park, KS, died February 6, 2002 at the age of 83. Mr. Bartram worked for AT&T for 34 years before retiring. He also served in the Army Air Corps in Iceland, England, and France during World War II and served in the Air Force Reserve for several years before he retired at the rank of lieutenant colonel in 1979.



Judge Dale E. Saffels '49, 81, Topeka, died November 14, 2002

Judge Saffels law career was one of distinguished public service. He was a senior U.S. District Court judge, appointed by President Jimmy Carter in 1979. Earlier, he served as county attorney of Finney County, Kansas; was elected to four terms in the Kansas House of Representatives where he was Democratic leader; ran for governor; chaired the Kansas Corporation Commission; and had a private practice. During World War II, he commanded the Army's 1373rd Signal Company in France.

He was a member of the Washburn University School of Law Board of Governors. Law students named Judge Saffels Alumnus of the Year in 1983, and the Washburn Law School Association awarded him its Distinguished Service Award in 1987.

Survivors include his wife, Margaret Cowger Deiter, two daughters, a son, a stepson, and a stepdaughter.

1 9 5 0 s

Bill M. Stevick '50, Harrisonville, MO, died August 29, 2002, at the age of 82. He practiced law for over 50 years. Elected, in 1962, as Lee's Summit Municipal Judge. Served in World War II under General George Patton. He received both the Silver Star and the Purple Heart. In the 1950's, Bill was Director of Vital Statistics and Records for the State of Kansas. He was also appointed Workers Compensation Commissioner of Kansas. Bill helped organize the Harrisonville Crime Commission and was active in Harrisonville community affairs during the 28 years that he lived there.

Wayne M. Stallard '52, Onaga, KS, died March 6, 2002, at the age of 74. Mr. Stallard practiced law in Onaga from 1952 until his death. He served as Pottawatomie County attorney from 1955 to 1959 and city attorney for Onaga from 1953 to 1979. He also was the attorney for Pottawatomie County Rural Water District Nos. 3 and 4, for the board of Community Hospital District No. 1 at Onaga and for Unified School District 322.



Sherman Albert Parks Jr. '75, Topeka, KS, died Tuesday, Aug. 13, 2002, at his home, at the age of 51. Mr. Parks was a lawyer.

He served on the Kansas Parole Board in the 1990s. He had worked in the state's revisor of statutes office from 1975 to 1978. He served as executive director of the Kansas Chiropractic Association from 1982 to 1989 and was appointed deputy assistant secretary of state in May 1989. He also served on the Topeka Unified School District 501 Board of Education from 1988 to 1995 and was president of the board in 1992 and 1993. He was born Aug. 16, 1950, in Topeka, the son of Sherman A. Parks Sr. and Alberta Parks. He graduated from Topeka High School, Washburn University and Washburn University School of Law. Mr. Parks was a member of St. John AME Church on its trustee board and as director of Christian activities of lay organizations. He also sang in the church men's choir and the Chancellor Choir. He married Blanche C. Williams on June 3, 1972, in Leavenworth. She survives. Other survivors include a son, Michael A. Parks, Cherryhill, N.J.; and a daughter, Stacy M. Parks, Topeka.

1 9 7 0 s

Ronald W. Fairchild '77, Topeka, KS, died May 26, 2002 at the age of 53. He had cancer. He practiced law for 12 years with the firm of Eidson, Lewis, Porter & Haynes. He established his own practice in the law firm of Porter, Fairchild, Wachter & Haney in 1989. He specialized in civil trial practice, civil litigation defense, life insurance litigation, product liability and product liability law and railroad law. He received the "Boss of the Year" citation in 1994. He was an adjunct professor of trial techniques at Washburn Law School from 1980 to 1989. In his memory, an endowed scholarship has been created for The Center for Excellence and Advocacy at the Washburn University School of Law.

1 9 9 0 s

Ronnie Montano Jr '99, Newton, KS, died Saturday, September 7, 2002, at the age of 49. Mr. Montano was an engineer at the Kansas Department of Transportation for 23 years and had been a state inspector for KDOT. He also was an attorney and volunteered services for the Cornerstone Law Office in Newton.

Kenneth Winford '92, Topeka, KS, died September 16, 2002 after an automobile accident, at the age of 35. Mr. Winford established Winford Law Office in Dodge City and Garden City and later practiced with Barnett and Renner, P.A., in Auburn for two years. He joined the Johnson County Public Defenders Office in Olathe in January of 2002. Mr. Winford was a member of the Kansas Bar Association and the Kansas Trial Lawyers Association.

Michael Manning Keynote Speaker

Michael Manning '77 has had a storybook career. Two popular books describing his work as lead counsel for cases of national significance prove that.

The first of these books, *Inside Job*, relates to litigation against New York mob-related money broker Mario Renda. In 1984, the FDIC chose Manning to head its litigation against Renda. Under his leadership, successful civil and criminal prosecutions were carried out in New York, Florida, Kansas, California, and Hawaii.

In 1989, Manning was lead counsel in MDL-834--the notorious Lincoln Savings/Charles Keating cases. The largest commercial litigation in U.S. history at that time, the Keating cases involved over 51,000,000 pages of documents and over 600 depositions. Manning's team collected nearly \$300 million and coordinated dozens of related criminal and administrative matters. *Trust Me* is the story of those cases.

In October 2002, the Washburn Alumni Association named Manning an Alumni Fellow. The Fellows program recognizes alumni who have distinguished themselves in their careers and invites them back to Washburn to interact with students and faculty in the classroom and other academic settings.

During his visit, Manning was keynote speaker at the dedication of the new Robinson Courtroom and Bianchino Technology Center. An expert on the use of technology in the courtroom, Manning described how computer-age technology has made it possible to have "paperless trials." He noted that the Bianchino Technology Center put Washburn Law on the educational cutting edge. "Students who use the state-of-the-art technology here will be well prepared to meet the challenges of 21st century litigation," he said.



In addition to his presentation at the dedication ceremony, Mr. Manning talked informally with students and faculty, sharing insights about current law practice and his vision for the future of the legal profession.

Manning credits Washburn University School of Law for setting him on the right career path. "The law school provided me with a great basis for a career in litigation," he said. His first job after law school was with Kansas City-based Morrison and Hecker, a firm that stresses the same important principles he learned at Washburn, dedication and loyalty to the client. "They gave me great training as a young litigation associate, and I was put on some very exciting cases that turned out well for our clients," he recalled.

"One of my venerated senior partners told me, 'The best way to develop new work for new clients is to do good work, cost effectively, for your old clients.' He was right." Today, Manning is lead partner for Stinson Morrison Hecker's Phoenix office.

Manning has received numerous other honors during his career. In 1994, National Law Journal included him in its triennial selection of the "100 Most Influential Lawyers in America." *GQ Magazine* described him as "a passionate, outspoken, crusading, relentless, righteous workaholic with a brilliant legal mind."

In addition to his professional work, Manning is active in local, state, and national organizations. He is a board member and past president of the FBI Citizens Academy; chairman of the advisory board of LIFE TEEN, INC., a Phoenix-based charity which, through spiritual development, helps teens cope with the special challenges they face; and board member of the Make A Wish Foundation of Central & Southern Arizona.



Two alumni appointed to Kansas Supreme Court

Governor Bill Graves has announced the appointments of Judge Marla J. Luckert '80 and Judge Robert L. Gernon '69, to the Kansas Supreme Court. Both will be sworn in on January 13, 2003. With the appointment of both Luckert and Gernon, Washburn University School of Law alumni will occupy 5 of the 7 seats on the Kansas Supreme Court.



Judge Marla J. Luckert '80

1993, Luckert was a Law School Adjunct Professor. Luckert was a former partner in Goodell, Stratton, Edmonds and Palmer L.L.P. in Topeka.

In 1993 Luckert was selected as a Washburn University Alumni Fellow. Luckert has served on the Kansas Bar Association Board of Governors as President, President-Elect, Vice President, Secretary-Treasurer, District 5 Representative and young lawyers section President. In 1990 the KBA honored her with an Outstanding Service Award. Luckert received the YWCA Woman of Excellence Award in 1996.

Luckert is only the second woman appointed to the Kansas Supreme Court. The first woman appointed, Chief Justice Kay McFarland '64, is also a graduate of Washburn University School of Law.

Luckert was a Shawnee County District Court Judge since 1992; and has been Chief Judge of the 3rd Judicial District since 2000. In 1985 and 1991-

Judge Robert Gernon '69



Gernon has been a member of the Kansas Court of Appeals since 1988 when he was appointed by Governor Mike Hayden. From 1979-1988 Gernon was a judge in the 22nd Judicial District, which included two terms as the district's administrative judge from 1981 until he was appointed to the Court of Appeals. Gernon was in private practice from 1970-1979 and was Brown County Attorney and County Counselor from 1971-1975.

Gernon received the KBA Outstanding Service Award in 1991 and was awarded the KBA Professionalism Award in 2001. He has served on the KBA Continuing

Legal Education Committee and on the Kansas District Judges Executive Committee when he was a trial judge. Gernon was past chair of the KBA Public Information Committee. He currently serves as a liaison from the Court of Appeals to the District Judges' Association. He has been a member of the KBA committee on Professionalism and the KDJA Legislative Committee.

Bianchino Technology Center Dedication



Bernie Bianchino '74 came home to the Washburn University School of Law in

October. The occasion was the dedication of the new Robinson Courtroom & Bianchino Technology Center. A generous gift from Mr. Bianchino and his wife Marilyn, Overland Park, KS, made the state-of-the-art technology center possible.

Mr. Bianchino is well aware of the wonders of technology and how necessary it is for tomorrow's lawyers to understand and use it. "Much of my career was focused in the area of communications," Mr. Bianchino said. "My years at Washburn prepared me well, and I want to be sure that today's students are equally ready to practice law in the 21st century. Marilyn and I are happy to see how this new technology center has taken shape."

Mr. Bianchino was senior attorney for the U.S. Department of Energy until 1978, then was counsel for Exxon Corporation for the next eight years. He joined U.S. Sprint as Vice President - Law in 1986. After eight years in that position, he spent one year as Executive Vice President and General Counsel of Qwest Communications in Denver before joining Sprint PCS in 1995 as Chief Business Development Officer. From 1995 until June 2000, he was Chief Business Development Officer for Sprint PCS in Kansas City, Missouri. Prior to retirement, Mr. Bianchino was also Chief Executive Officer of Pegaso PCS in Mexico City.

Washburn Law students are getting great benefit from the Bianchino Technology Center. Its components include

- Flat-screen display monitors at the judge's bench, counsel tables, and witness stand to assist with the viewing of evidence;
- An attorney's podium containing a control panel touchscreen, flat-screen display, and document camera to assist with the presentation of evidence;
- A SmartBoard to assist with jury viewing of evidence;
- Video cameras in the courtroom and attached robing/jury deliberation room to provide recording and viewing of proceedings.

The Center also incorporates technology for video conferencing and remote broadcasts, digital court reporting, and electronic legal research.

Students in Trial Advocacy classes are learning how to present evidence persuasively with modern computer technology and graphics. Videotaping equipment records students' performances of mock trial exercises for critiquing by Trial Advocacy instructors.



Dean Dennis R. Honabach with Bernie Bianchino '74

Hands-on instruction with the various technological systems is increasing students' comfort with the use of these tools.

"Bernie and Marilyn Bianchino are giving our students a 'head start' as they prepare for their law careers," said Dean Dennis Honabach. "No other law school in the country can match the hands-on experience our students are receiving in the use of equipment like that available in the most sophisticated courtrooms."

Mr. Bianchino has been equally generous in giving of his time and expertise to Washburn Law. He has been a member of the Washburn Law School Association Board of Governors since 1990, and he is president during 2002-2003.

As part of the installation of technology, the courtroom was modified to be compliant with Americans with Disabilities Act requirements. New carpeting, drapes, and darkening shades were installed. Generous donations from more than 80 individuals and groups provided for the re-upholstering of seating in the gallery and jury box.

Ahrens Genomic Tort Symposium

Science and the law are forever intersecting. The mapping of the genome will create unique legal problems. Fifty-two attended the Ahrens Advanced Tort Symposium at Washburn University School of Law in September and considered some of these problems. The educational program was made possible by the Ahrens Chair in Tort Law created in 1986 by the Wichita law firm of Michaud, Cordry, Michaud, Hutton and Hutton. Gerald Michaud is a 1951 graduate of Washburn Law and one of the nation's leading attorneys in Tort Law. Faculty for the Ahrens Symposium comprised 11 leading practitioners and scholars with expertise in genomic torts from the United States and abroad. They were:

- David W. Brooks '85, partner, Shook, Hardy & Bacon, Kansas City, Missouri
- Professor Roger Brownsword, University of Sheffield, United Kingdom
- Professor Heidi Li Feldman, Georgetown University Law Center, Washington, DC
- Stephen F. Fink, partner, Thompson & Knight, Dallas, Texas
- Dean Dennis R. Honabach, Washburn University School of Law
- Victoria M. Kumorowski, MDiv, Washburn Law '75, Associate Director Pastoral Services, Trumbull Memorial Hospital, Warren, Ohio
- Kurt A. Level, Senior Counsel, Employment Law Group, Koch Industries, Inc., Wichita, Kansas
- Gerald L. Michaud '51, of Counsel, Morris, Laing, Evans, Brock & Kennedy, Wichita, Kansas
- Dean David Partlett, Washington and Lee University School of Law, Lexington, Virginia
- Thomas Redick, partner, Gallop, Johnson & Newman, St. Louis, Missouri
- Professor William J. Rich, Washburn University School of Law

Questions considered in their presentations and formal and informal discussions during the symposium were challenging: Do we want to have designer babies whose genes have been altered to ensure they have no chance of having a particular disease? What are the legal ramifications if the geneticist picks the wrong gene to excise? If a doctor discovers that her patient has a particular gene for breast cancer, does she

have legal obligation to tell the patient? And does the patient have a legal obligation to inform her sisters? Should companies be able to test employees for genetic "defects" and then use their findings to either deny employment or assign employees with "defective" genes to the least hazardous work areas?

Symposium presentations and responses will be published in Volume 42 of the Washburn Law Journal.



Washburn University School of Law is featured in two recent issues of National Jurist. In March 2002, the magazine for law students rated Washburn Law a "very good value" in its cover story "Best School for Your Money." The magazine's October 2002 issue included a story about the School's community service efforts and a work day during which students fixed up nearby Abbott Community Center.



To select the "best buy" schools, National Jurist compared tuition, bar pass rates, unemployment rates, median grants, clinic slots, and faculty-student ratios. Only 10 public schools were rated higher than Washburn, and only one of these is in the Law School Admission Council's Midwest Region.

"This recognition by National Jurist is gratifying," said Dean Dennis R. Honabach. "Washburn University School of Law enjoys a national reputation for its leadership in legal information technology, for its dedicated faculty and staff, and for its innovative curricular programs."



In the second story, National Jurist reported that Washburn Law far surpasses most law schools in its emphasis on public service. Dean Honabach added the workday to student orientation to instill in new students the importance of community service.

First-year students turned out in force for the service project at Abbott Center. More than 150 of the 165 class members, as well as upper-class students and professors, did a variety of jobs such as painting, cleaning and organizing a very out-of-order library—a task that included locating a mislaid card catalog and arranging all of the books in order. "We got through tasks that would have taken forever to organize," said Carol Vizzier, associate dean for student affairs.

"We want our students to realize that professionalism includes a commitment to community service. This year's event was so successful that we plan to repeat it next year," Ms. Vizzier said.



Partnerships



Dean Dennis R. Honabach

Scenes from the annual Dean's Circle Dinner

At the annual Dean's Circle dinner, held at the American Restaraunt in October, alumni and friends heard from Dean Dennis R. Honabach, Washburn Law School Alumni Association President, Bernie Biachino, and Washburn University President Jerry Farley, on the exciting changes at the School of Law.



Prof. Linda Elrod '72, Betty and John Hayes '46

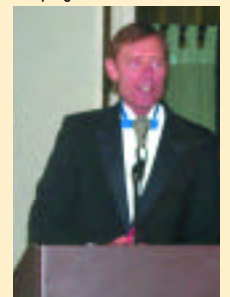
Members of the society give \$1,000 or more annually to the School of Law. For more information, please contact the Office of Development at 785-231-1100.



Pedro Irigonegaray '73 & Dean Dennis R. Honabach discuss new signature programs



Bernie Biachino '71 Washburn Law School Alumni Association President



Jerry Farley Washburn University President

EVENTS CALENDAR

January 2003

28 Kansas Supreme Court Reception
Honoring Judges Luckert '80 & Gernon '69
5:30p.m. - Bradbury Thompson Center

February 2003

6 Alumni Reception - Shughart, Thomson & Kilroy,
5:30 p.m. - Overland Park, KS
13 Collaborative Family Law Workshop -
Washburn University School of Law
8:30 a.m. - Clinic Room - 101
21 Foulston, Siefken Lecture - Dean Mark Sargent,
from Villanova University
Noon - Robinson Courtroom and Bianchino Technology Center

March 2003

10 Center for Business and Transactional Law Corporate
Counsel Institute - Bradbury Thompson Center
27 Alumni Reception - Hinkle, Elkouri Law Firm, LLC
5:30 p.m. - Wichita, Kansas

April 2003

5 Alumni Reception -
Burlington Northern Santa Fe
6:00 p.m. - Ft. Worth, Texas

May 2003

17 Law School Commencement Ceremonies
23 CLE: Ninth Annual DUI Law and Practice Seminar

June 2003

10 Kansas Bar Association Annual Meeting - Washburn
Luncheon, Noon - Hyatt Regency, Wichita Kansas
19-20 CLE: Recent Developments in the Law

October 2003

1-3 Missouri Bar/Missouri Judicial Conference Annual Meeting -
Columbia, Missouri

December 2003

Kung Fu Strategies and the Art of Trial Advocacy
By Dan Monnat & Grace X. Wu-Monnat



**WASHBURN UNIVERSITY
SCHOOL OF LAW**

1700 College, Topeka, KS 66621

NONPROFITORG.
U.S. POSTAGE
PAID
PERMIT 689
TOPEKA, KANSAS